

Sheet 4 of 11

WEPG

Wetlands and Environmental Planning Group
Leonard S. Rindner, PLLC.

len.rindner@wetlands-epg.com
(704) 904-2277
www.wetlands-epg.com

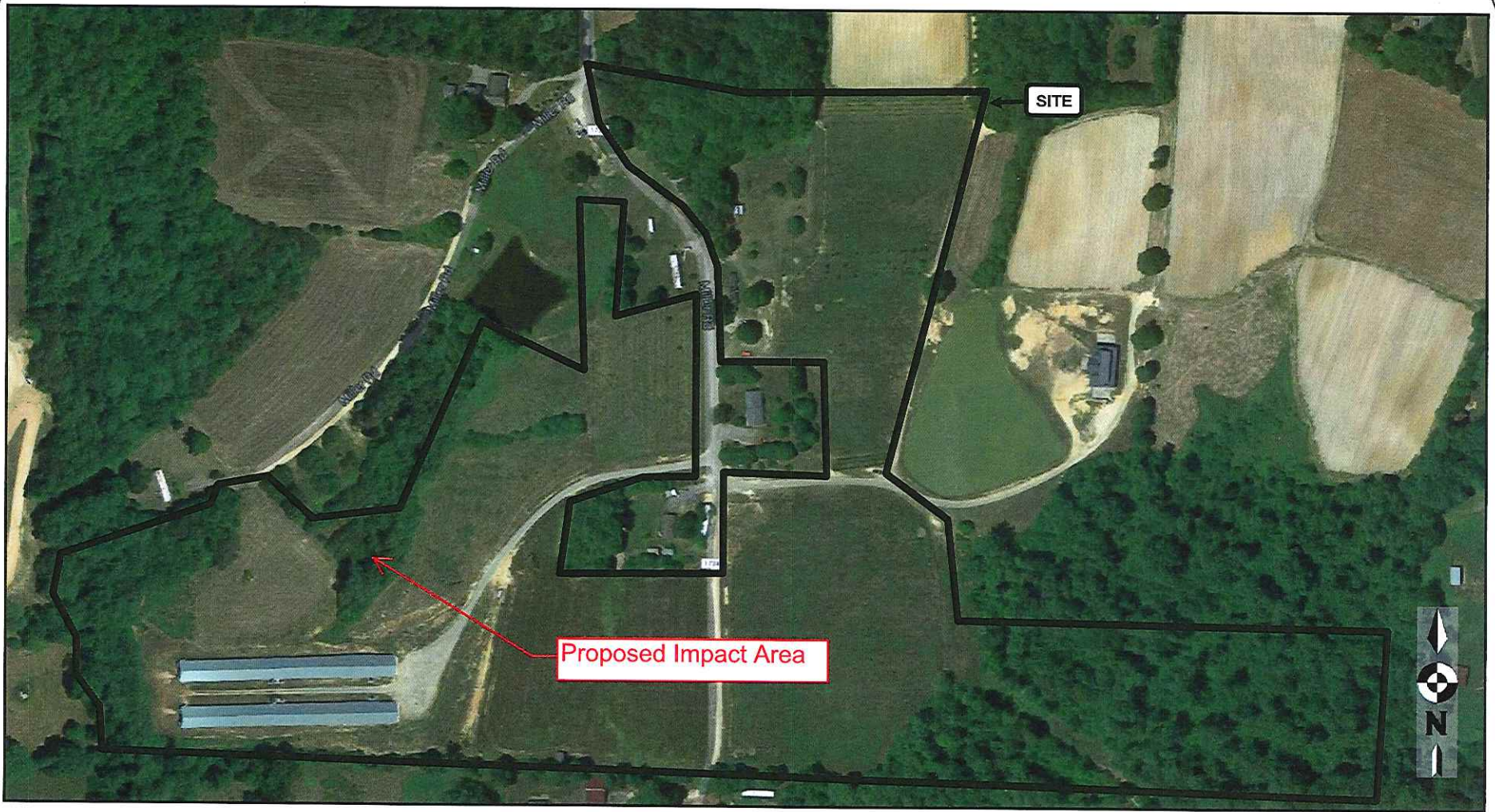
MILLER CHICKEN HOUSE EXPANSION
Yadkin Co., NC

VICINITY MAP 2
Approximate Project Boundaries

Drawn By:
HAC

Reviewed By:
LSR

DATE:
7/7/16



Sheet 5 of 11

WEPG

Wetlands and Environmental Planning Group
Leonard S. Rindner, PLLC.

len.rindner@wetlands-epg.com
(704) 904-2277
www.wetlands-epg.com

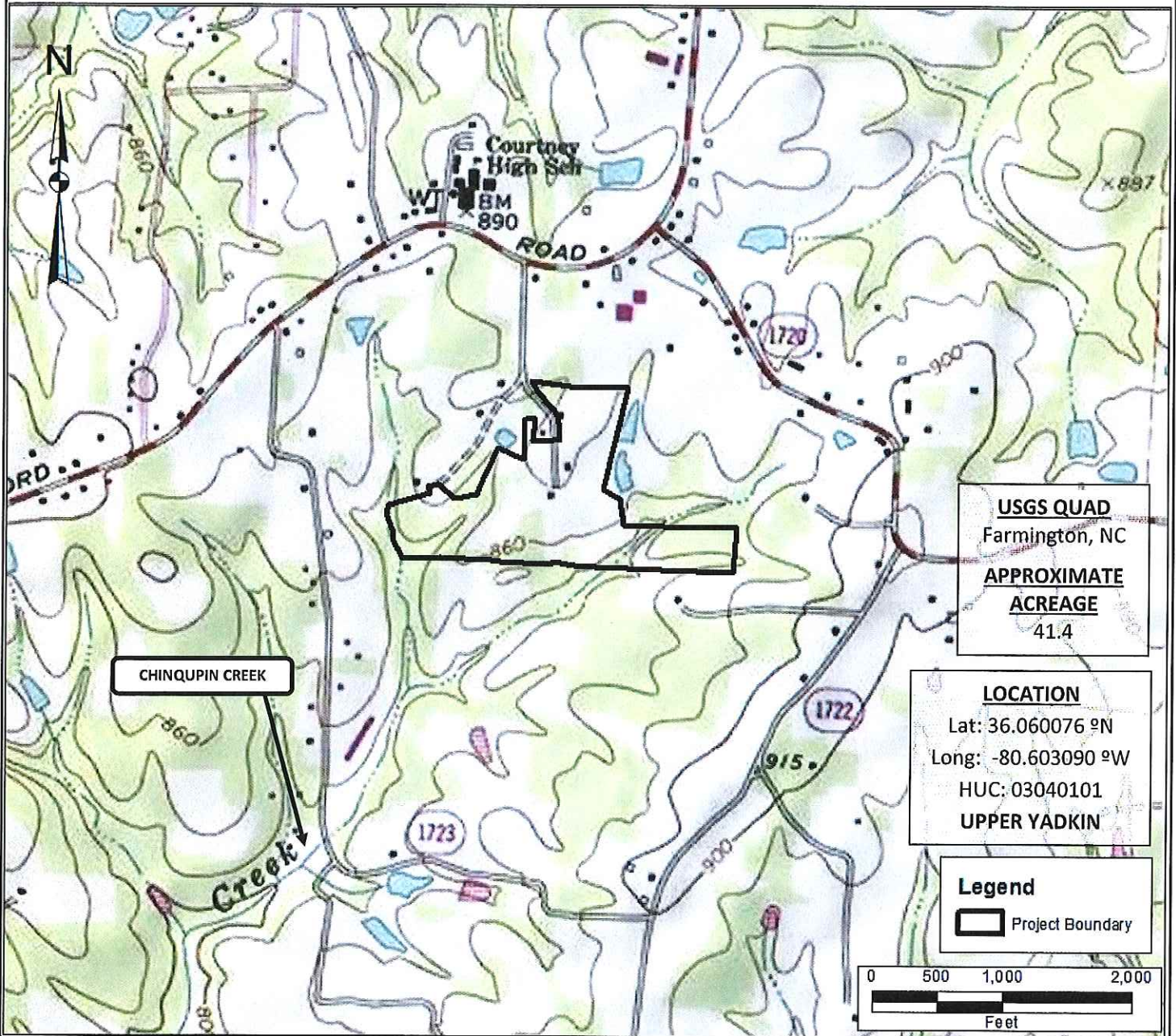
MILLER CHICKEN HOUSE EXPANSION
Yadkin County, NC

Drawn By:
HAC

Reviewed By:
LSR

AERIAL MAP
Approximate Project Boundaries

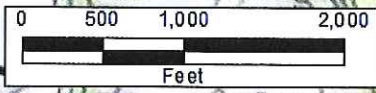
DATE:
7/7/16



USGS QUAD
Farmington, NC
APPROXIMATE ACREAGE
41.4

LOCATION
Lat: 36.060076 °N
Long: -80.603090 °W
HUC: 03040101
UPPER YADKIN

Legend
[Black Outline] Project Boundary



Sheet 6 of 11	<p>WEPG Wetlands and Environmental Planning Group Leonard S. Rindner, PLLC. len.rindner@wetlands-epg.com (704) 904-2277 www.wetlands-epg.com</p>	<p>MILLER CHICKEN HOUSE EXPANSION Yadkin Co., NC</p>	<p>Drawn By: HAC</p>	<p>Reviewed By: LSR</p>
<p>USGS MAP Approximate Project Boundaries</p>		<p>DATE: 7/7/16</p>		



Sheet 7 of 11

WEPG

Wetlands and Environmental Planning Group
Leonard S. Rindner, PLLC.

len.rindner@wetlands-epg.com
(704) 904-2277
www.wetlands-epg.com

MILLER CHICKEN HOUSE EXPANSION
Yadkin County, NC

SOIL MAP
Approximate Project Boundaries

Drawn By:
HAC

Reviewed By:
LSR

DATE:
7/7/16

Map Unit Legend

Yadkin County, North Carolina (NC197)			
Map Unit Symbol	Map Unit Name	Acres in AOI	Percent of AOI
CmB	Clover fine sandy loam, 2 to 6 percent slopes	60.8	46.2%
CmC	Clover fine sandy loam, 6 to 10 percent slopes	15.2	11.6%
CmD	Clover fine sandy loam, 10 to 15 percent slopes	13.7	10.4%
CoB2	Clover sandy clay loam, 2 to 6 percent slopes, moderately eroded	25.1	19.1%
CoC2	Clover sandy clay loam, 6 to 10 percent slopes, moderately eroded	7.0	5.3%
DoB	Delila fine sandy loam, 0 to 6 percent slopes	7.9	6.0%
TvB2	Totier sandy clay loam, 2 to 6 percent slopes, moderately eroded	0.1	0.1%
TvC2	Totier sandy clay loam, 6 to 10 percent slopes, moderately eroded	1.8	1.4%
Totals for Area of Interest		131.5	100.0%

Sheet 8 of 11

WEPG

Wetlands and Environmental Planning Group
Leonard S. Rindner, PLLC.

len.rindner@wetlands-epg.com
(704) 904-2277
www.wetlands-epg.com

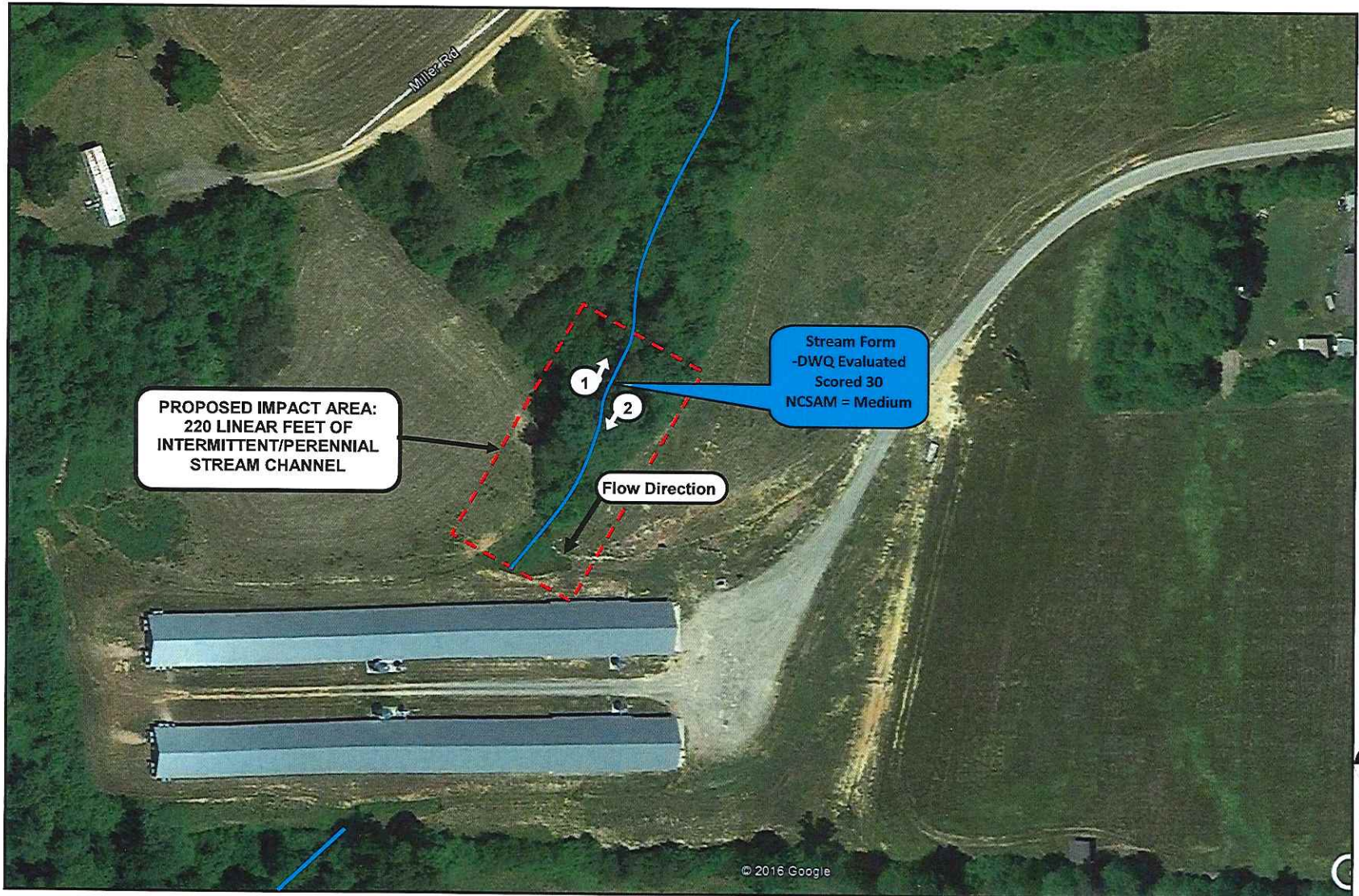
MILLER CHICKEN HOUSE EXPANSION
Yadkin Co., NC

SOIL MAP 2
Map Unit Descriptions

Drawn By:
HAC

Reviewed By:
LSR

DATE:
7/7/16



Sheet 10 of 11

WEPG

Wetlands and Environmental Planning Group
Leonard S. Rindner, PLLC.

len.rindner@wetlands-epg.com
(704) 904-2277
www.wetlands-epg.com

MILLER CHICKEN HOUSE EXPANSION
Yadkin County, NC

Drawn By:
AJ

Reviewed By:
LSR

**IMPACT LOCATION MAP WITH DATAPOINT
AND PHOTOPOINT LOCATIONS**

DATE:
01/10/17

