

ATTACHMENT 1

Figure 1

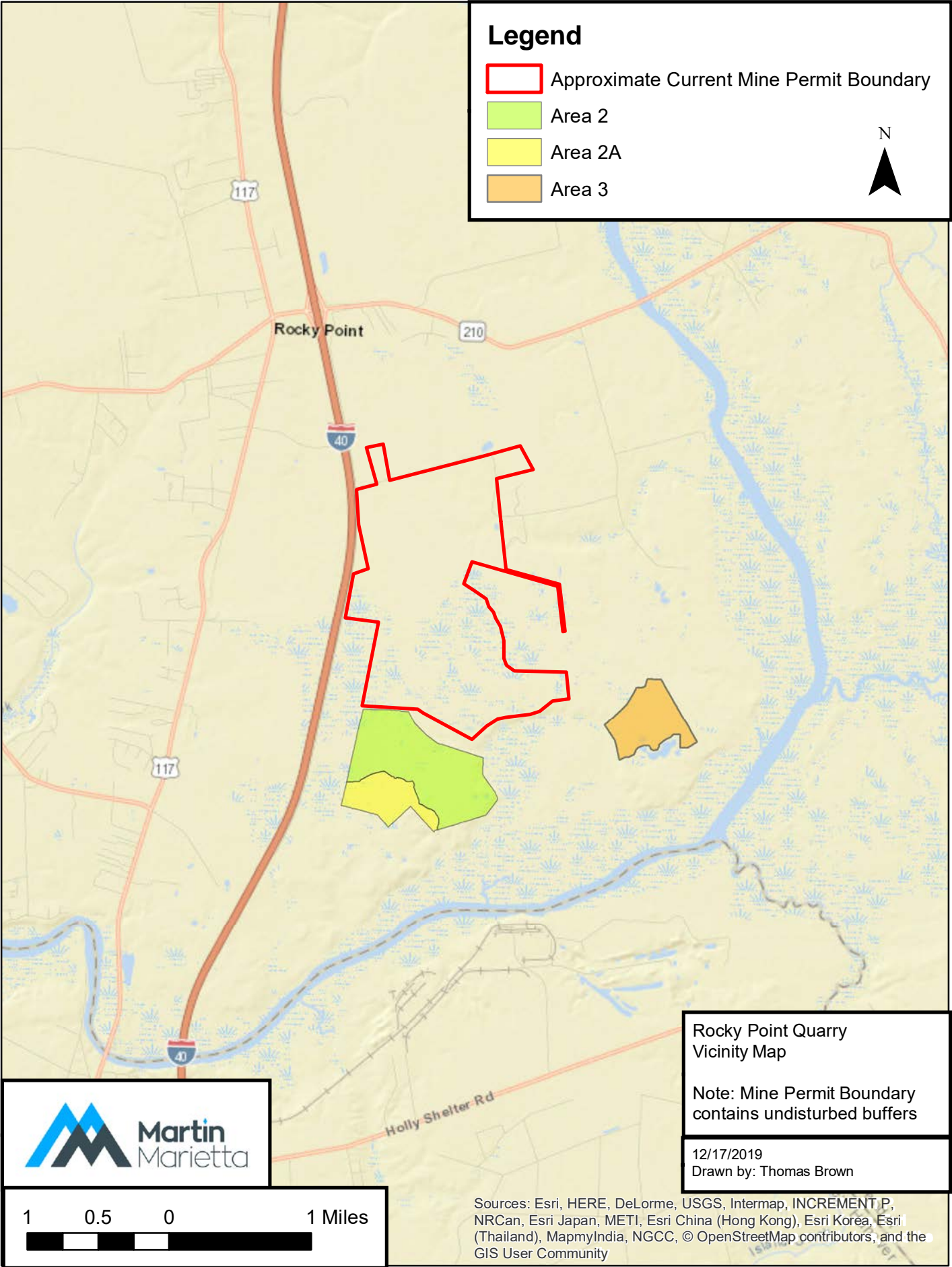
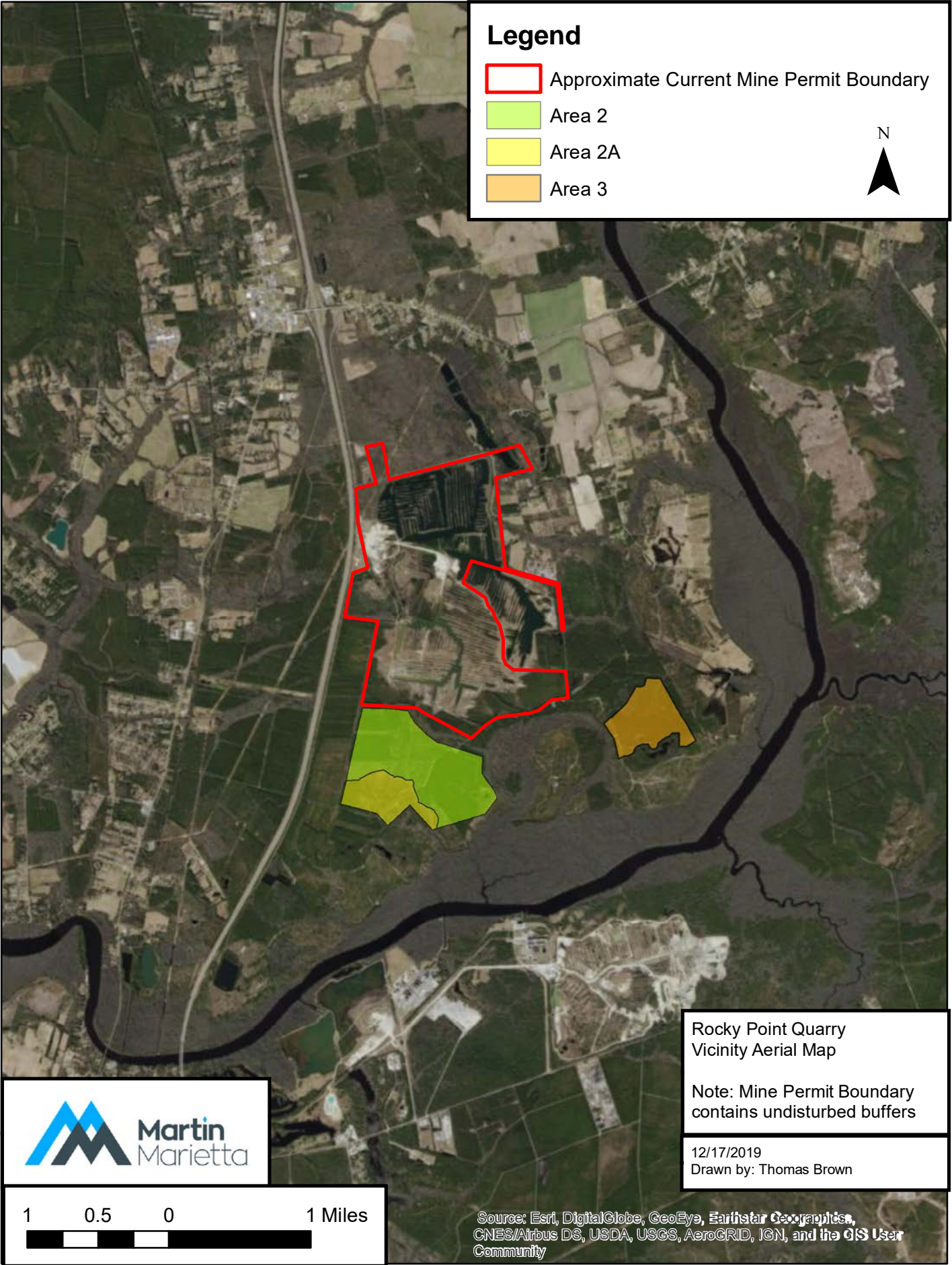
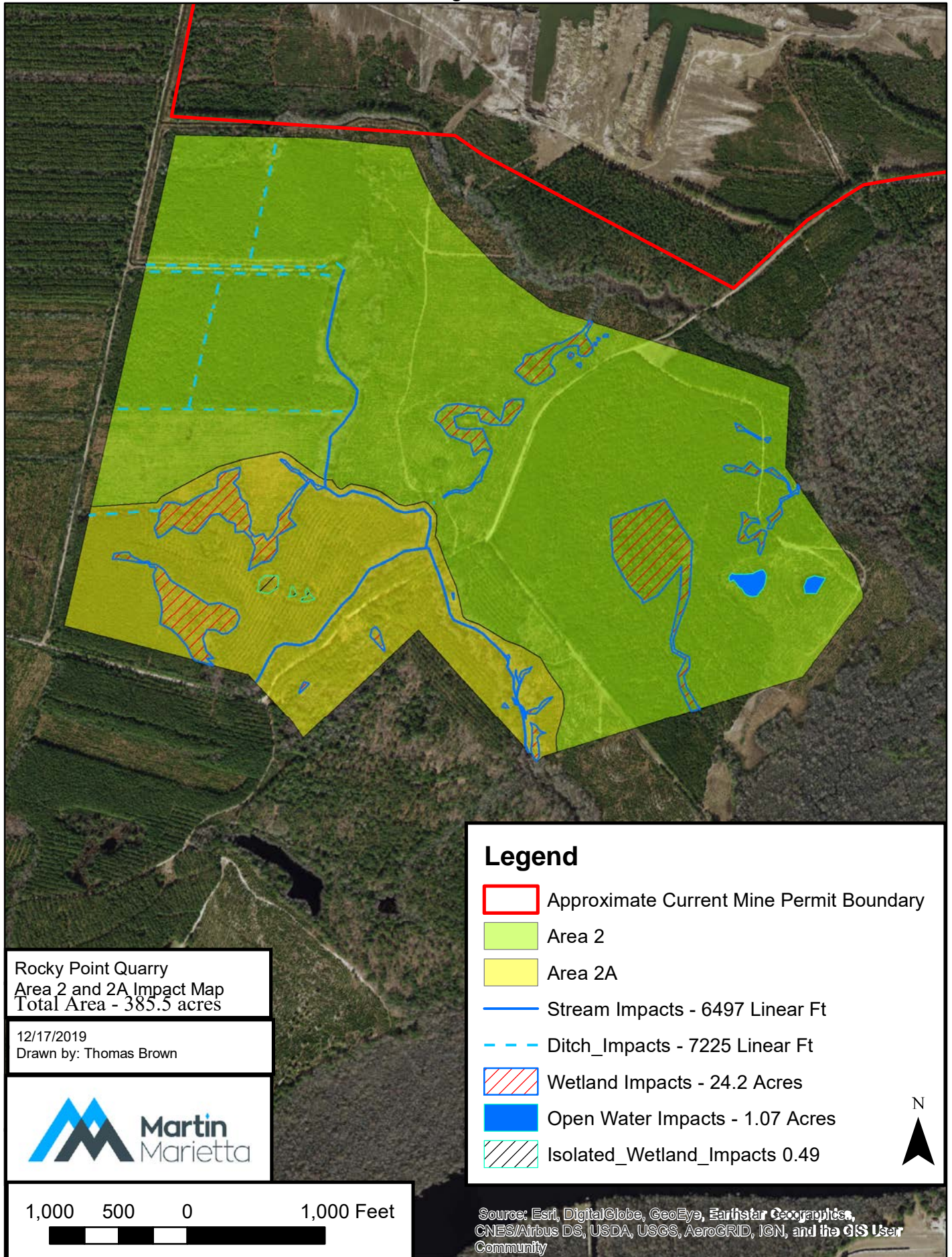


Figure 2



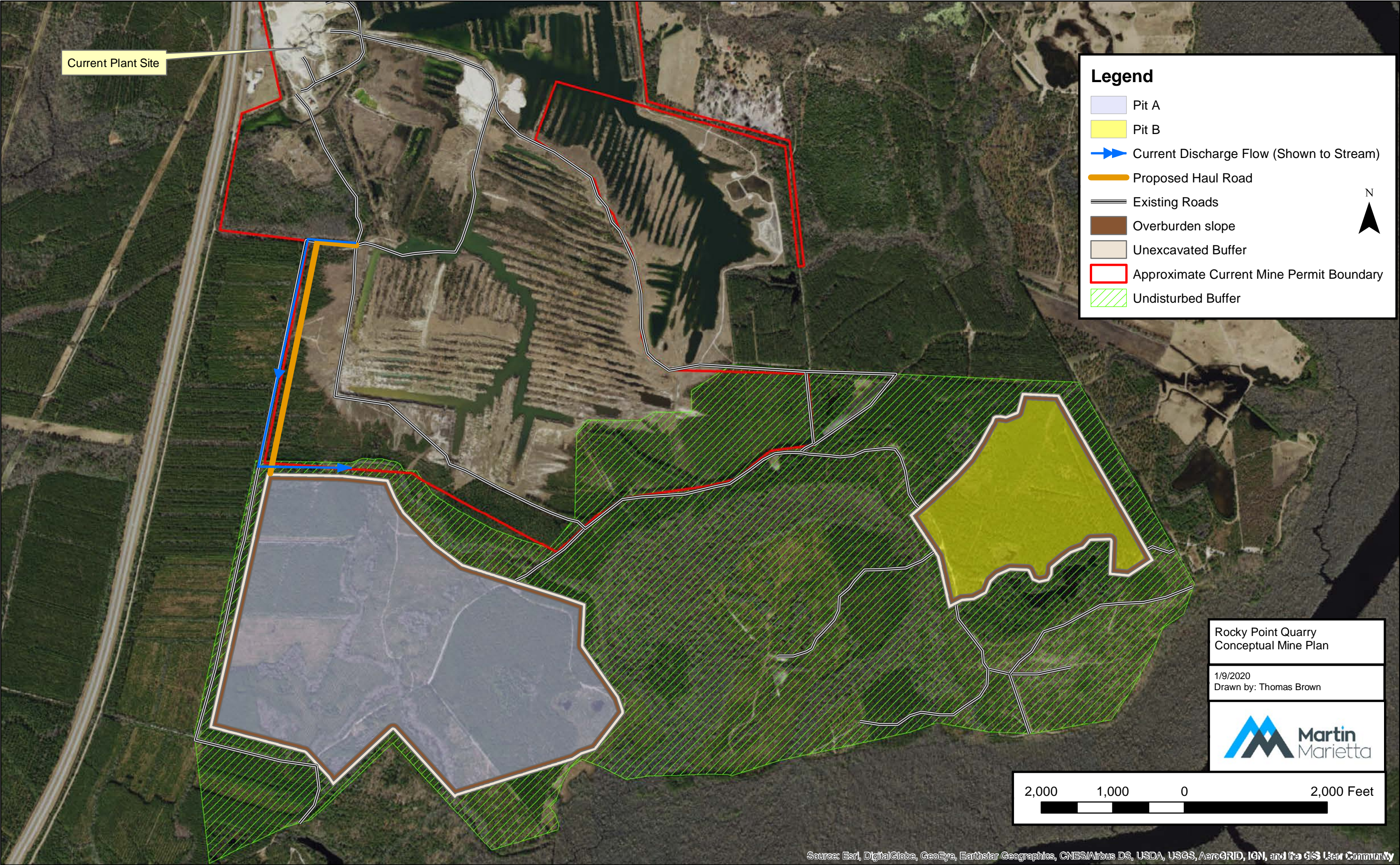
ATTACHMENT 2

Figure 3



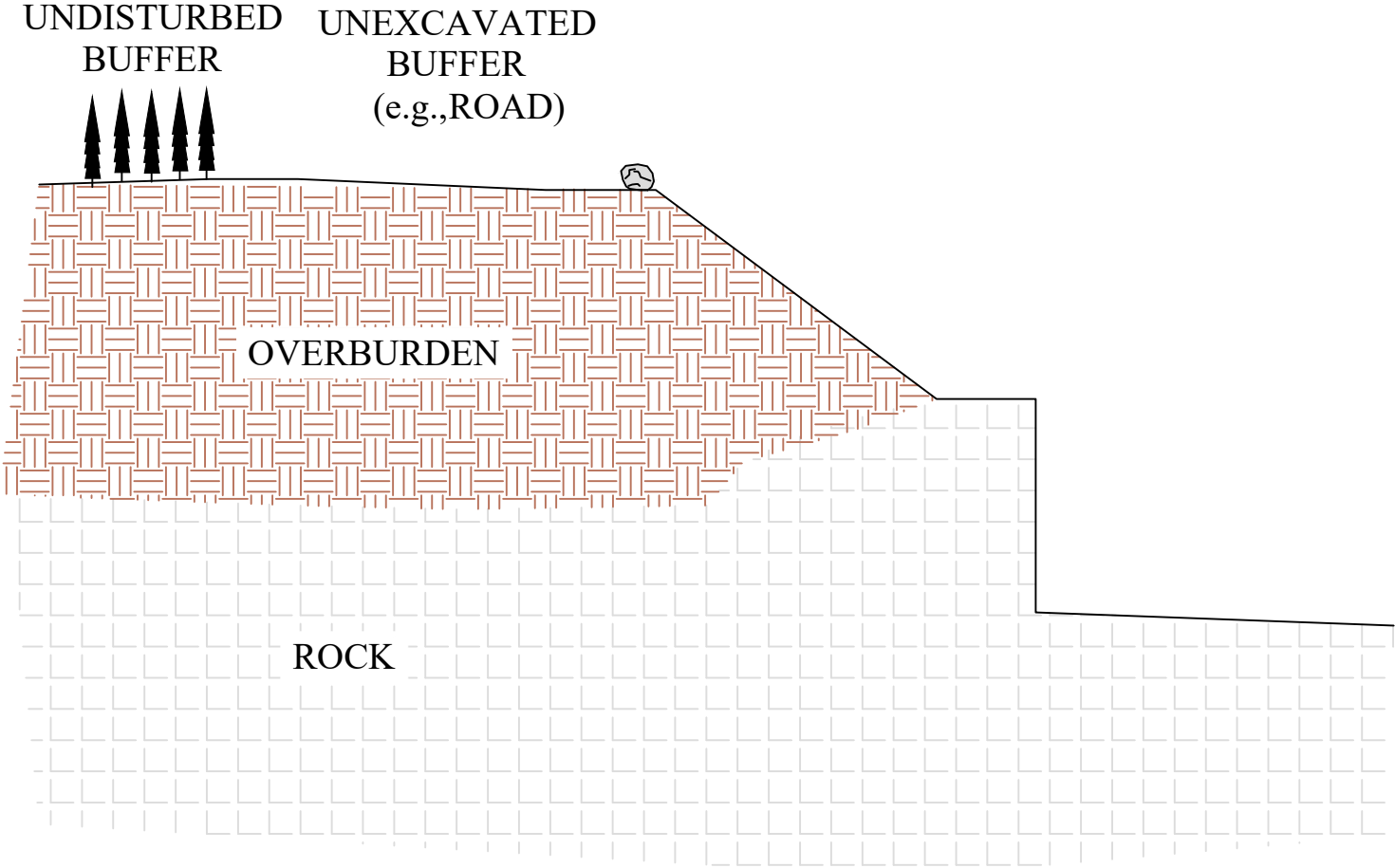
ATTACHMENT 3

Figure 6



ATTACHMENT 4

Figure 7



11		BY:
10		BY:
9		BY:
8		BY:
7		BY:
6		BY:
5		BY:
4		BY:
3		BY:
2		BY:
1		BY:
0		BY:
	DATE	REVISION
		BY

FILE NAME: ROCKY POINT CROSSING
DESIGN FIRM:



401/404 PERMIT APPLICATION

PIT CROSS SECTION

QUARRY: ROCKY POINT

OWN BY: PNP	DATE: JAN 2020	JOB NO.
CK BY: PNP	SCALE: NTS	SHEET NO. 1
		DWG. NO. 1

ATTACHMENT 5

Figure 5

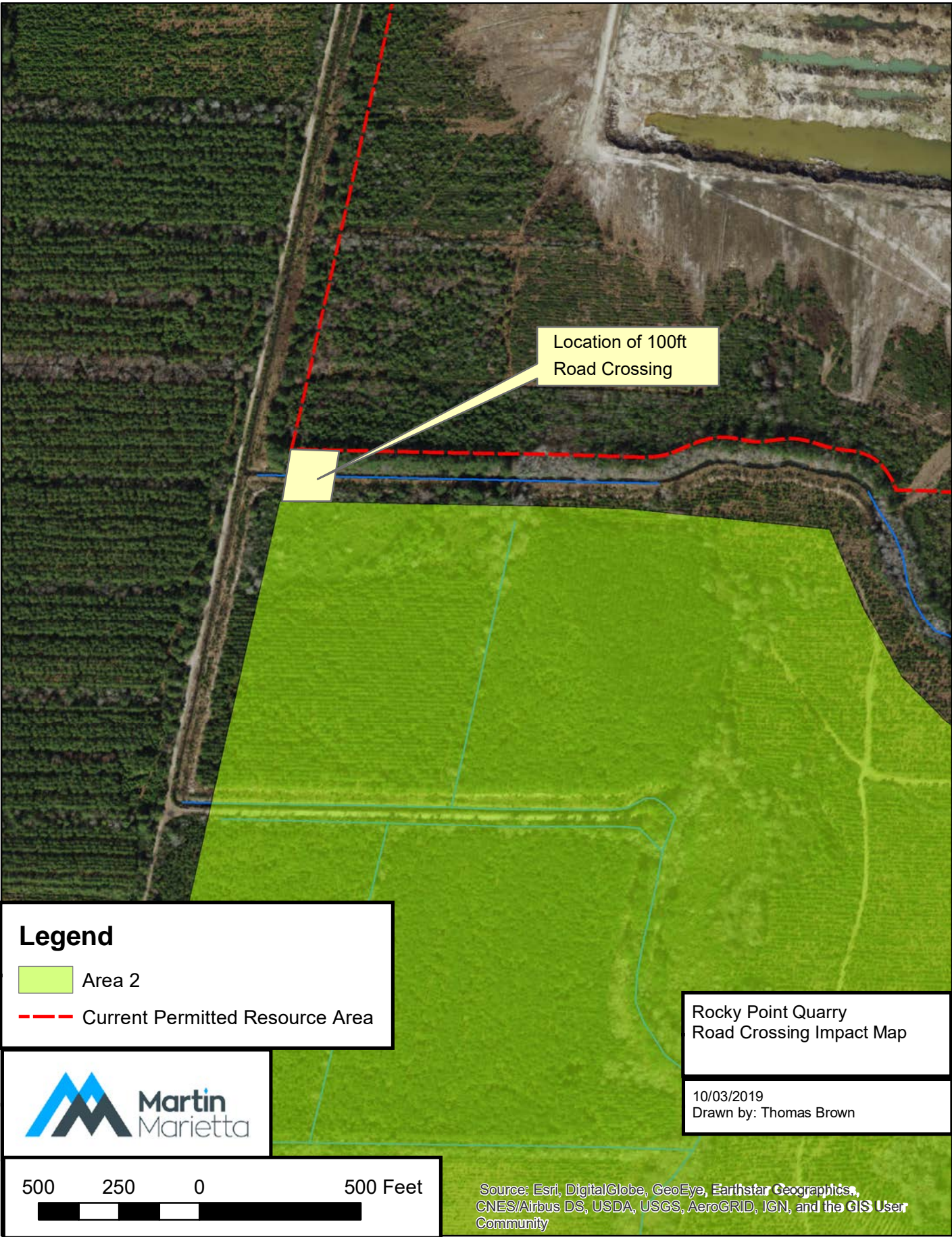


Figure 6

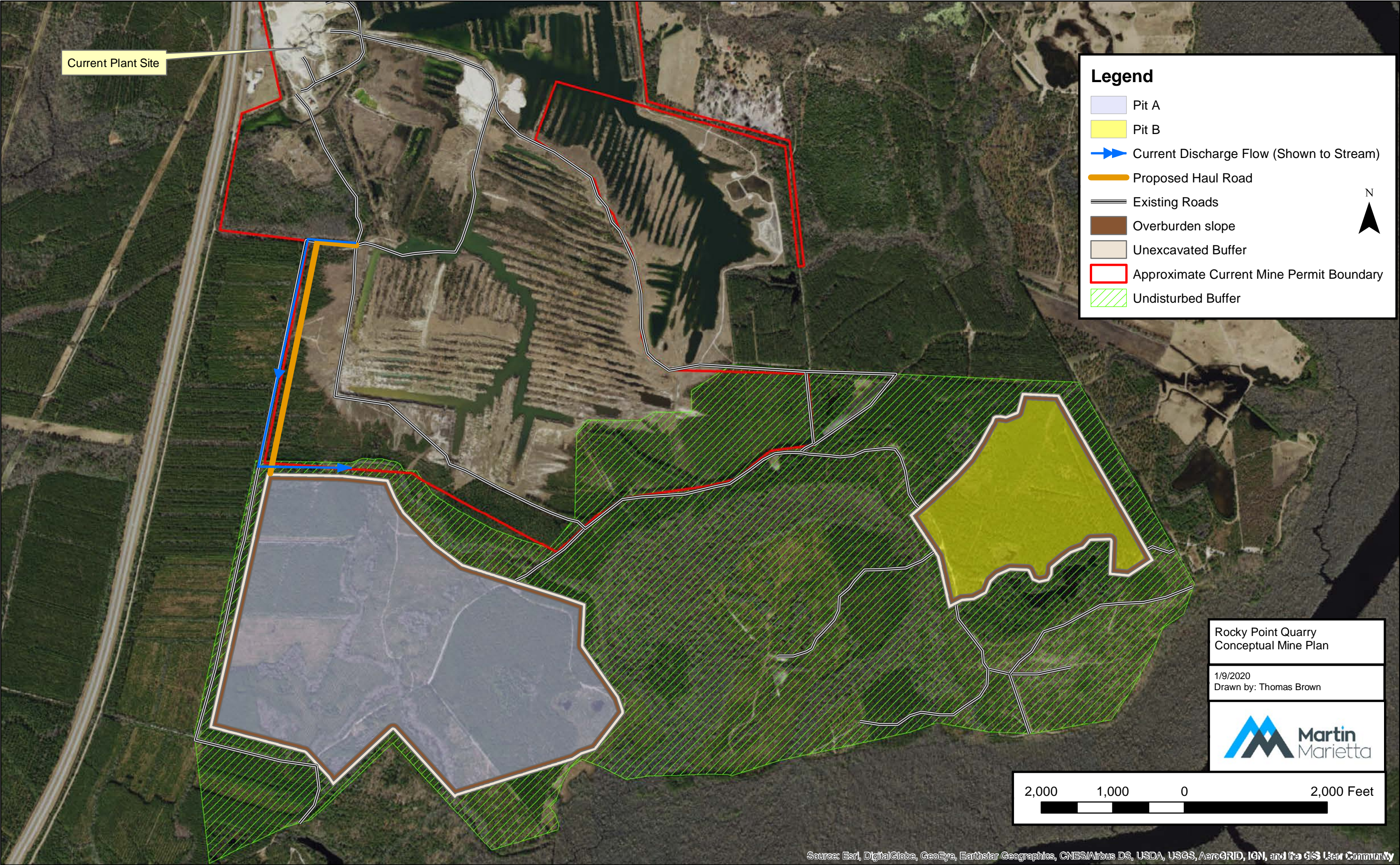
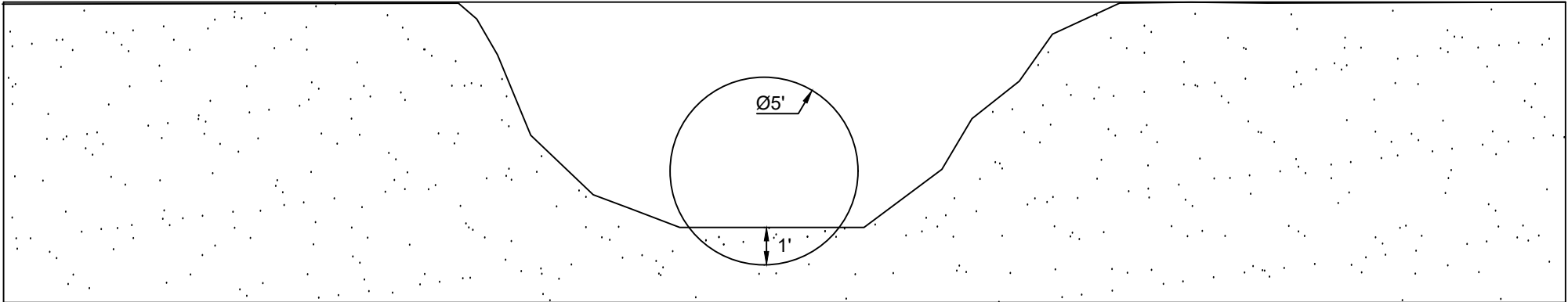


Figure 8



- NOTES:
- 1. ENSURE MINIMUM PIPE COVER MEETS MANUFACTURER RECOMMENDATIONS
 - 2. STREAM CHANNEL SHAPE FOR ILLUSTRATIVE PURPOSES ONLY
 - 3. DIAMETER OF PIPE MAY BE ADJUSTED TO ACCOMMODATE DITCH FLOWRATE.



PROPOSED HAUL ROAD CROSSING

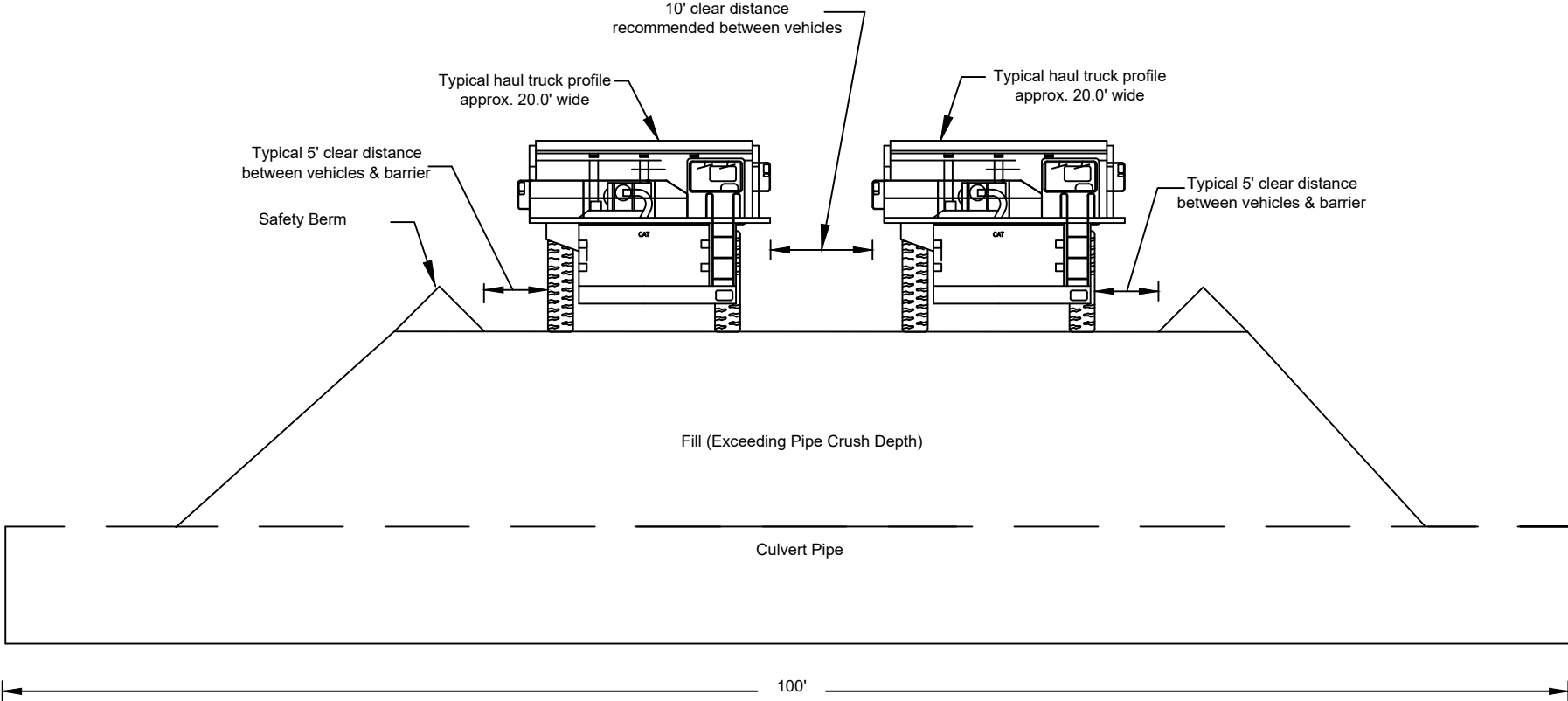
DITCH CROSS SECTION

QUARRY: ROCKY POINT

11			BY:
10			BY:
9			BY:
8			BY:
7			BY:
6			BY:
5			BY:
4			BY:
3			BY:
2			BY:
1			BY:
0			BY:
	DATE	REVISION	BY
	FILE NAME: ROCKY.POINT.CROSSING		
	DESIGN FIRM:		

OWN BY: PNP	DATE: JAN 2020	JOB NO.
CK BY: PNP	SCALE: NTS	SHEET NO. 1
		DWG. NO. 1

Figure 9



11			BY:
10			BY:
9			BY:
8			BY:
7			BY:
6			BY:
5			BY:
4			BY:
3			BY:
2			BY:
1			BY:
0			BY:
	DATE	REVISION	BY
FILE NAME: ROCKY POINT CROSSING			
DESIGN FIRM:			



PROPOSED HAUL ROAD CROSSING

ROAD CROSS SECTION

QUARRY: Rocky Point

DESIGNED BY: PNP	DATE: JAN 2020	JOB NO.
CHECKED BY: PNP	SCALE: NTS	SHEET NO. 1
		DWG. NO. 1

ATTACHMENT 6

Figure 3

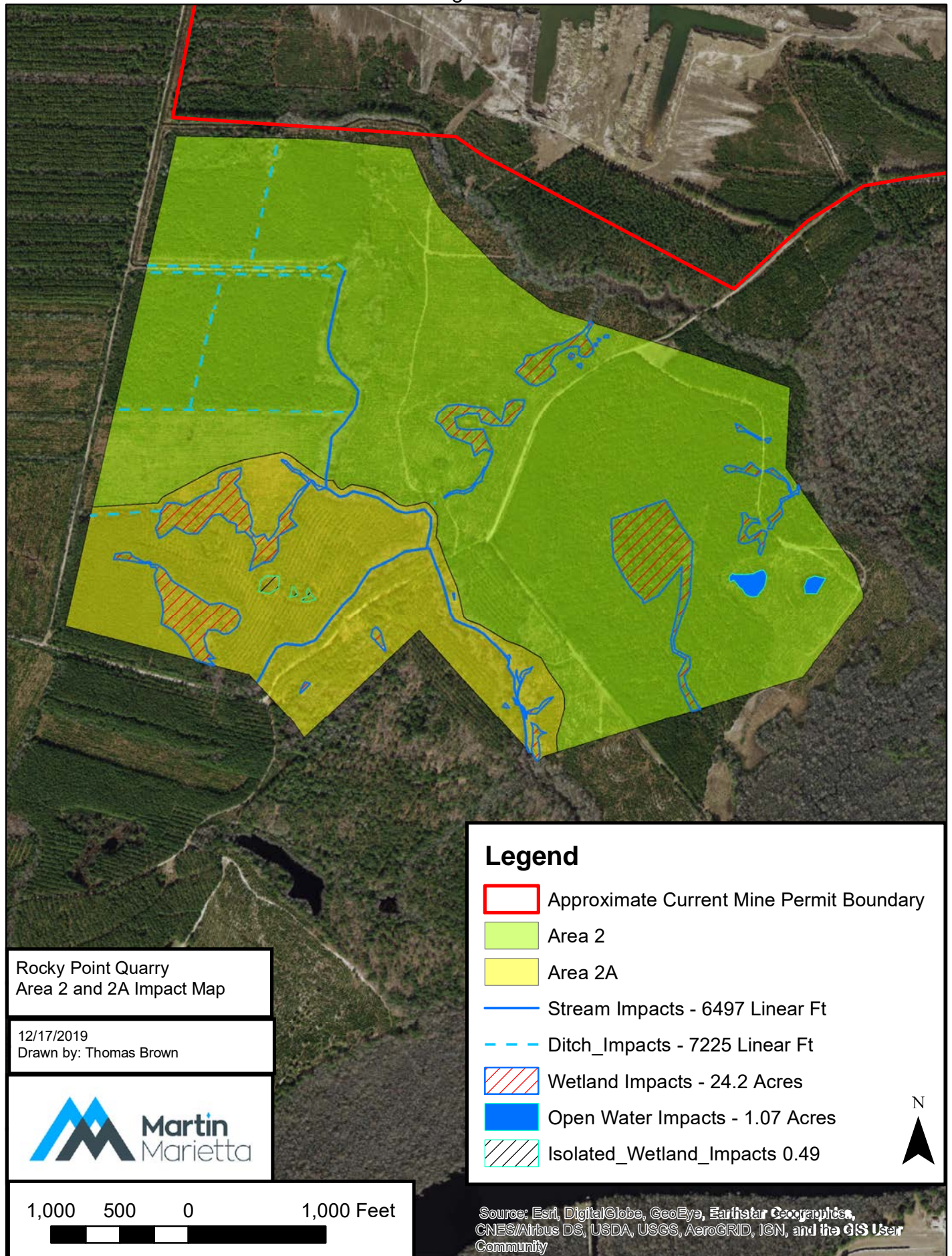
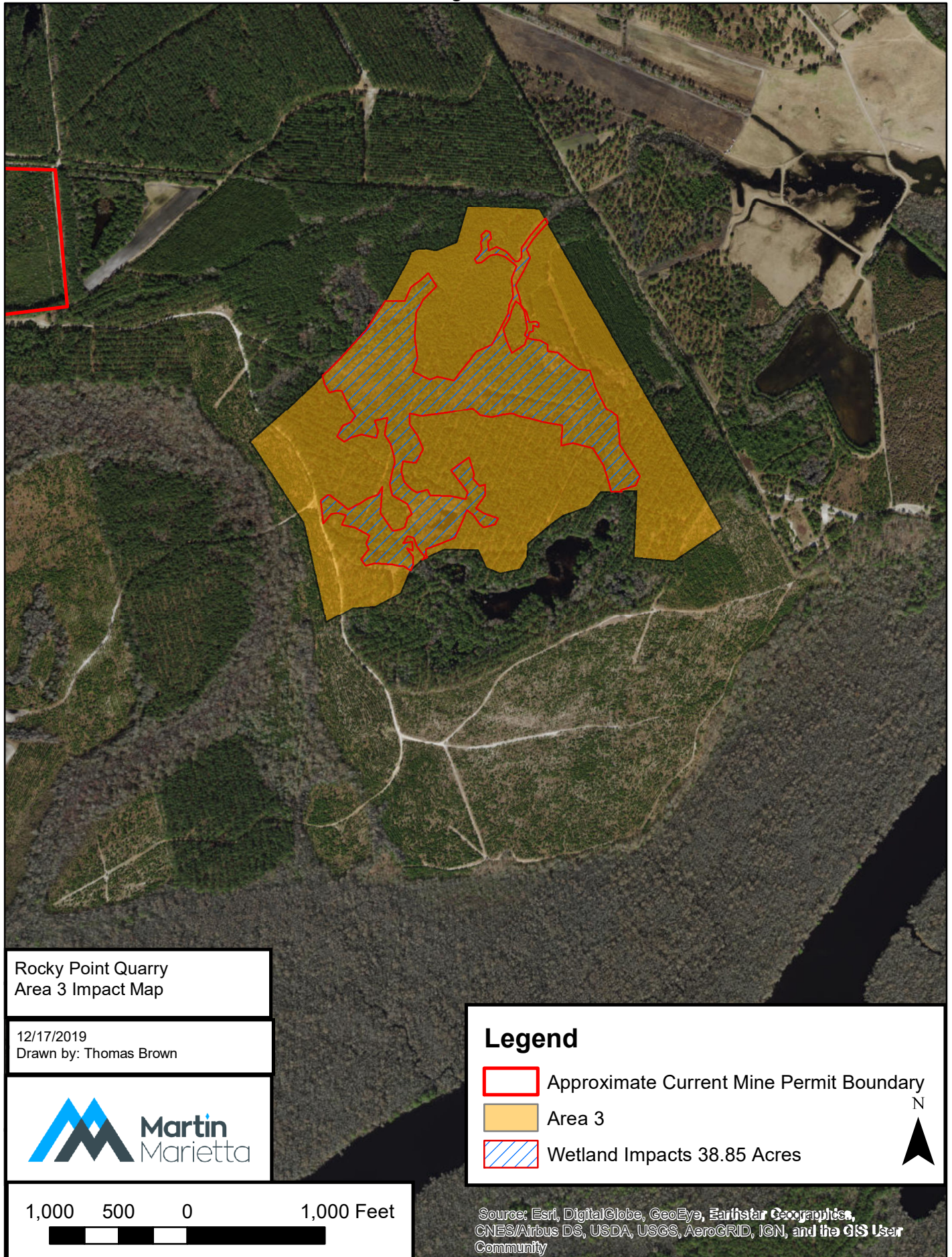


Figure 4



ATTACHMENT 7

Figure 10

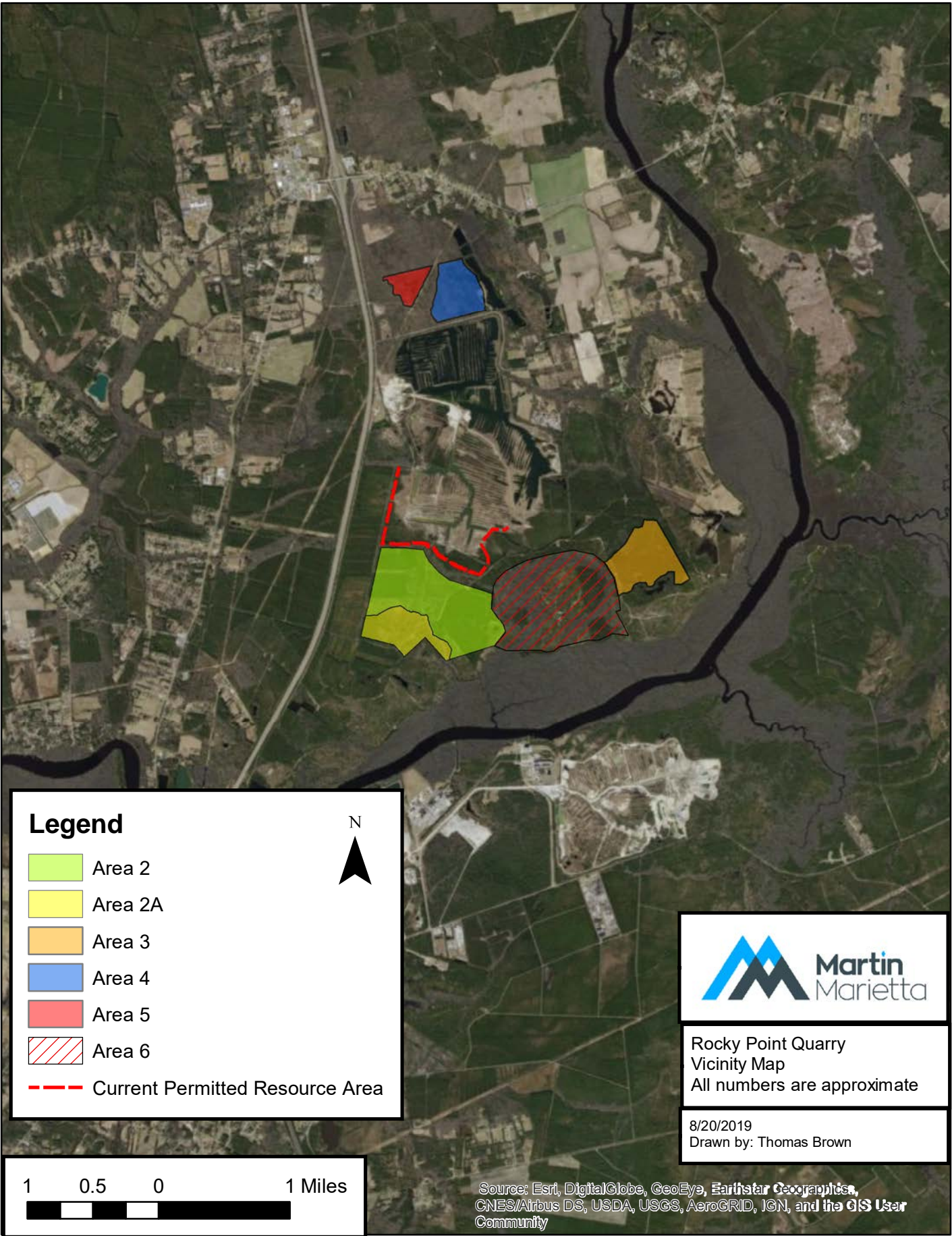


Figure 11

