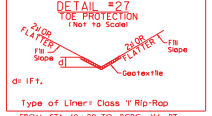
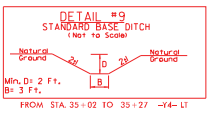
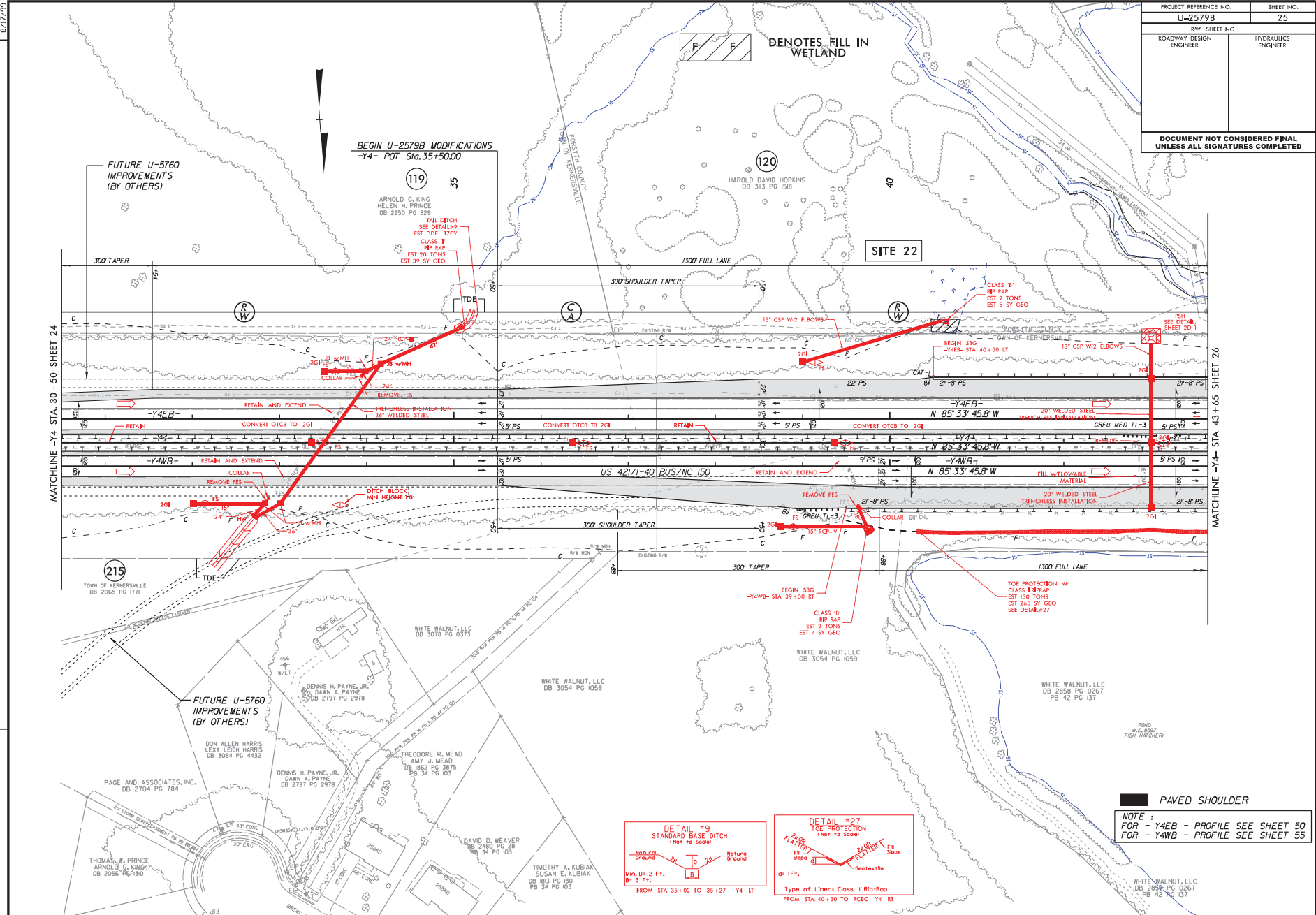


REVISIONS
 CONSTRUCTION REVISION - 11/16/18 - REVISED ROADWAY AND HYDRAULIC DESIGN TO ACCOUNT FOR FUTURE U-5760 PROJECT, BEGINNING AT -Y4- STA. 35+50.00 - RSH

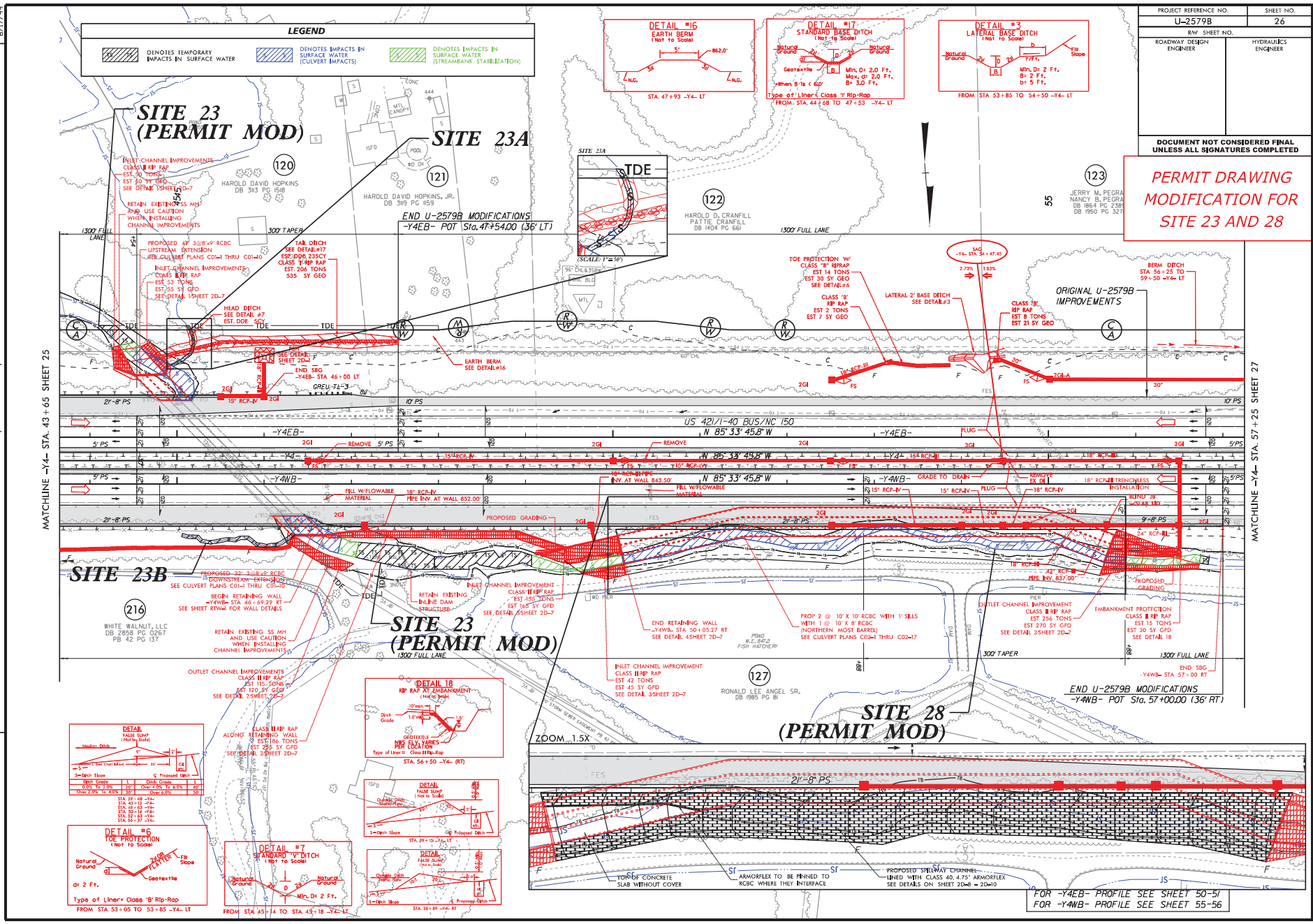


PAVED SHOULDER

NOTE :
FOR - Y4EB - PROFILE SEE SHEET 50
FOR - Y4WB - PROFILE SEE SHEET 55

WHITE WALNUT, LLC
DB 2858 PG 0267
PB 42 PG 137

CONSTRUCTION REVISION - 11/16/18 - REVISED ROADWAY AND HYDRAULIC DESIGN TO ACCOUNT FOR FUTURE U-5760 PROJECT, INCLUDING RETAINING WALL AND CULVERT ON NORTH SIDE OF -Y4- MATCHLINE MOVED TO -Y4- STA 57+25 (FROM 56+61) TO ILLUSTRATE ALL CHANGES ON PLAN SHEET 26, -RSH
 REVISIONS
 MATCHLINE -Y4- STA. 43+65 SHEET 25
 MATCHLINE -Y4- STA. 57+25 SHEET 27



| | |
|----------------------------------|---------------------|
| PROJECT REFERENCE NO. U-2579B | SHEET NO. 26 |
| ROADWAY DESIGN ENGINEER | HYDRAULICS ENGINEER |

DOCUMENT NOT CONSIDERED FINAL
 UNLESS ALL SIGNATURES COMPLETED
**PERMIT DRAWING
 MODIFICATION FOR
 SITE 23 AND 28**

JERRY M. PEGRA
 NANCY B. PEGRA
 DB 1864 PG 238
 DB 1950 PG 327

LEGEND

| | | | | | |
|--|--|--|--|--|---|
| | DENOTES TEMPORARY IMPACTS IN SURFACE WATER | | DENOTES IMPACTS IN SURFACE WATER (CULVERT IMPACTS) | | DENOTES IMPACTS IN SURFACE WATER (STREAMBANK STABILIZATION) |
|--|--|--|--|--|---|

SITE 23 (PERMIT MOD)
 INLET CHANNEL IMPROVEMENTS CLASS II R/R RAP EST 30 TONS SEE DETAIL #16-7
 RETAIN EXISTING MSH AND USE CAUTION WHEN INSTALLING CHANNEL IMPROVEMENTS
 PROPOSED 47' 3/8" x 8" RCBC USTREAN EXTENSION SEE CULVERT PLANS C041 THRU C040
 INLET CHANNEL IMPROVEMENTS CLASS II R/R RAP EST 53 TONS SEE DETAIL #16-7
 HEAD DITCH SEE DETAIL #7 EST. DDE
 14" DITCH SEE DETAIL #17 CLASS II R/R RAP EST. 206 TONS 535' SY GEO
 END U-2579B MODIFICATIONS -Y4EB- POT Sta. 47+54.00 (36' LT)

SITE 23B
 PROPOSED 32' 3/8" x 8" RCBC DOWNSTREAM-EMBANKMENT SEE CULVERT PLANS C041 THRU C040
 BEGIN RETAINING WALL -Y4WB- STA 46+69.29 FT SEE SHEET RYW-4 FOR WALL DETAILS
 RETAIN EXISTING MSH AND USE CAUTION WHEN INSTALLING CHANNEL IMPROVEMENTS
 OUTLET CHANNEL IMPROVEMENTS CLASS II R/R RAP EST 120 SY GEO SEE DETAIL #18 SHEET 26-7
SITE 23 (PERMIT MOD)
 1300 FULL LANE
 END U-2579B MODIFICATIONS -Y4WB- POT Sta. 57+00.00 (36' RT)

SITE 28 (PERMIT MOD)
 ZOOM 1.5X
 PROPOSED 21' x 8' PS
 TOP OF CONCRETE SLAB WITHOUT COVER
 ARMORLEX TO BE PINNED TO RCBC WHERE THEY INTERFACE
 PROPOSED STEELWAY CHANNEL LINED WITH CLASS 40.475' ARMORLEX SEE DETAILS ON SHEET 20A - 20A-D
 END 58G -Y4WB- STA 57+00 FT

DETAIL #16
 TOE PROTECTION (Not to Scale)
 Natural Ground
 dt: 2 Ft.
 Type of Liner: Class II Rip-Rap
 FROM STA. 53+05 TO 53+85 -Y4- LT

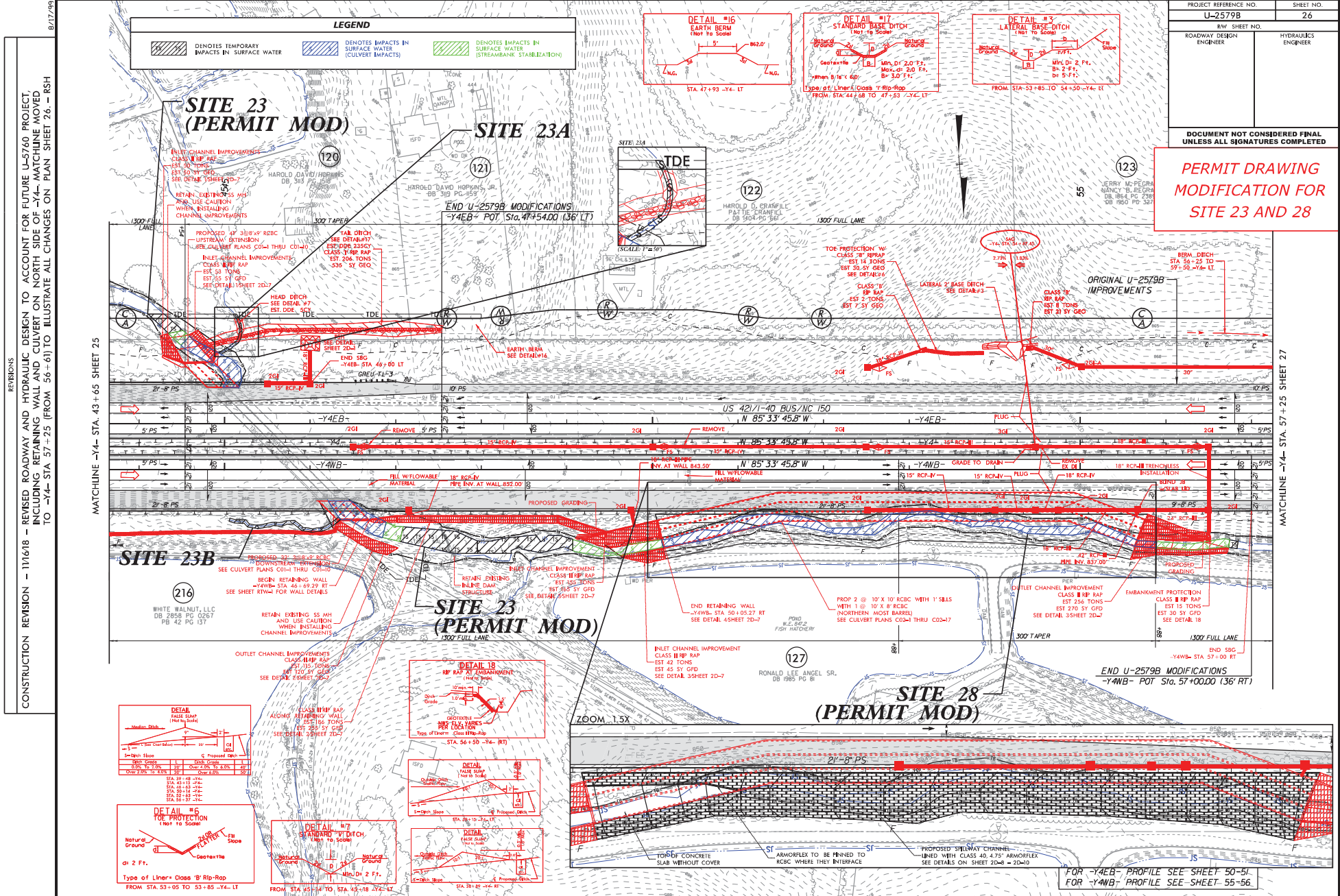
DETAIL #17
 STANDARD BASE DITCH (Not to Scale)
 Natural Ground
 dt: 2 Ft.
 Type of Liner: Class II Rip-Rap
 FROM STA. 44+08 TO 47+53 -Y4- LT

DETAIL #3
 LATERAL BASE DITCH (Not to Scale)
 Natural Ground
 dt: 2 Ft.
 Type of Liner: Class II Rip-Rap
 FROM STA. 53+85 TO 54+50 -Y4- LT

DETAIL #18
 CLASS II R/R RAP AT EMBANKMENT (Not to Scale)
 dt: 2 Ft.
 Type of Liner: Class II Rip-Rap
 STA. 54+50 -Y4- (RT)

DETAIL #7
 STANDARD 'Y' DITCH (Not to Scale)
 Natural Ground
 dt: 2 Ft.
 Type of Liner: Class II Rip-Rap
 FROM STA. 45+14 TO STA. 45+18 -Y4- LT

FOR -Y4EB- PROFILE SEE SHEET 50-51
 FOR -Y4WB- PROFILE SEE SHEET 55-56



| | |
|-------------------------|---------------------|
| PROJECT REFERENCE NO. | SHEET NO. |
| U-2579B | 26 |
| R/W SHEET NO. | HYDRAULICS ENGINEER |
| ROADWAY DESIGN ENGINEER | |

DOCUMENT NOT CONSIDERED FINAL UNLESS ALL SIGNATURES COMPLETED

PERMIT DRAWING MODIFICATION FOR SITE 23 AND 28

REVISIONS
 CONSTRUCTION REVISION - 11/16/18 - REVISED ROADWAY AND HYDRAULIC DESIGN TO ACCOUNT FOR FUTURE U-5760 PROJECT, INCLUDING RETAINING WALL AND CULVERT ON NORTH SIDE OF -Y4- MATCHLINE MOVED TO -Y4- STA 57+25 (FROM 56+61) TO ILLUSTRATE ALL CHANGES ON PLAN SHEET 26 - RSH
 B/17/19

LEGEND

| | | | | | |
|--|--|--|--|--|---|
| | DENOTES TEMPORARY IMPACTS IN SURFACE WATER | | DENOTES IMPACTS IN SURFACE WATER (CULVERT IMPACTS) | | DENOTES IMPACTS IN SURFACE WATER (STREAMBANK STABILIZATION) |
|--|--|--|--|--|---|

DETAIL #5
FILL SLIP (Not to Scale)

| Station | Top of Structure | Bottom of Structure |
|-----------|------------------|---------------------|
| STA 53+05 | 10.00 | 8.00 |
| STA 53+10 | 10.00 | 8.00 |
| STA 53+15 | 10.00 | 8.00 |
| STA 53+20 | 10.00 | 8.00 |
| STA 53+25 | 10.00 | 8.00 |
| STA 53+30 | 10.00 | 8.00 |

DETAIL #6
TIE PROTECTION (Not to Scale)

dt: 2 Ft.

Type of Liner: Close T Rib-Rap

FROM STA 53+05 TO 53+85 -Y4- LT

DETAIL #7
STANDARD BASE DITCH (Not to Scale)

MIN. D: 2 Ft.

FROM STA 45+14 TO STA 45+18 -Y4- LT

DETAIL #8
FILL SLIP (Not to Scale)

Stationing: STA 54+20 -Y4- RT

DETAIL #9
FILL SLIP (Not to Scale)

Stationing: STA 54+10 -Y4- RT

DETAIL #10
FILL SLIP (Not to Scale)

Stationing: STA 54+20 -Y4- RT

DETAIL #11
FILL SLIP (Not to Scale)

Stationing: STA 54+20 -Y4- RT

DETAIL #12
FILL SLIP (Not to Scale)

Stationing: STA 54+20 -Y4- RT

DETAIL #16
EARTH BERM (Not to Scale)

STA 47+93 -Y4- LT

DETAIL #17
STANDARD BASE DITCH (Not to Scale)

MIN. D: 2.0 Ft.
Max. D: 2.0 Ft.
B: 3.0 Ft.

Type of Liner: Close T Rib-Rap

FROM STA 44+08 TO 47+53 -Y4- LT

DETAIL #3
LATERAL BASE DITCH (Not to Scale)

MIN. D: 2 Ft.
B: 2 Ft.
S: 5 Ft.

FROM STA 52+85 TO 54+50 -Y4- LT

FOR -Y4EB- PROFILE SEE SHEET 50-51
FOR -Y4WB- PROFILE SEE SHEET 55-56

| WETLAND PERMIT IMPACT SUMMARY | | | | | | | | | | | | |
|--------------------------------------|----------------------|--------------------------|---------------------------------|-----------------------------|-----------------------------|--------------------------------------|--------------------------------|------------------------------|-----------------------|---|-------------------------------------|----------------------------|
| | | | WETLAND IMPACTS | | | | | SURFACE WATER IMPACTS | | | | |
| Site No. | Station (From/To) | Structure Size / Type | Permanent Fill In Wetlands (ac) | Temp. Fill In Wetlands (ac) | Excavation in Wetlands (ac) | Mechanized Clearing in Wetlands (ac) | Hand Clearing in Wetlands (ac) | Permanent SW impacts (ac) | Temp. SW impacts (ac) | Existing Channel Impacts Permanent (ft) | Existing Channel Impacts Temp. (ft) | Natural Stream Design (ft) |
| 1 | 28+00 -Y1- | ROAD FILL | 0.03 | | < 0.01 | 0.02 | | 0.02 | | 142 | | |
| 2 | 16+00 -Y1RPD- | ROAD FILL - INTERMITTENT | | | | | | 0.01 | | 109 | | |
| | | ROAD FILL - PERENNIAL | | | | | | 0.02 | | 208 | | |
| | | STREAMBANK STABILIZATION | | | | | | < 0.01 | < 0.01 | 10 | 37 | |
| 3 | 21+56-25+22 -Y1- | 2 @ 7'x6' RCBC | | | | | | 0.06 | < 0.01 | 438 | 33 | |
| 3A | 17+36-21+53 -Y1- | DETOUR - ROAD FILL | | | | | | | 0.08 | | 545 | |
| 3B | 20+55-21+32 -Y1- | DETOUR - ROAD FILL | | | | | | | 0.03 | | 194 | |
| 4 | 501+51-503+21 -L- | ROAD FILL | | | | | | 0.03 | < 0.01 | 493 | 18 | |
| | | STREAMBANK STABILIZATION | | | | | | < 0.01 | < 0.01 | 9 | 31 | |
| 5 | 503+85-507+80 -L- | ROAD FILL | | | | | | 0.05 | < 0.01 | 740 | 22 | |
| 5A | 507+39-509+64 -L- | ROAD FILL | | | | | | 0.01 | | 306 | | |
| 6 | 523+00 -L- | ROAD FILL | 0.03 | | | < 0.01 | | 0.02 | < 0.01 | 312 | 42 | |
| 7 | 527+00 -L- | ROAD FILL | 0.52 | | | 0.01 | | | | | | |
| | | ROAD FILL-POND | | | | | | 0.59 | | | | |
| 8 | 559+75 -L- | 2 @ 10'x6' RCBC | | | | | | 0.06 | < 0.01 | 442 | 53 | |
| | | STREAMBANK STABILIZATION | | | | | | < 0.01 | < 0.01 | 58 | 44 | |
| 9 | 560+75 -L- | ROAD FILL | 0.03 | | | 0.01 | | | | | | |
| 10 | 560+50-568+74 -L- | ROAD FILL | 0.01 | | | | | 0.07 | < 0.01 | 783 | 22 | |
| 10A | 566+84-572+75 -L- | ROAD FILL | | | | | | 0.05 | | 684 | | |
| 11 | 615+00 -L- | 3 @ 10'x9' RCBC | | | | | | 0.43 | 0.02 | 808 | 57 | |
| 11A | 19+76-21+44 -Y4RPBD- | CHANNEL CHANGE | | | | | | 0.08 | 0.01 | 223 | 41 | |
| 12 | 15+84-18+86 -Y4RPBD- | CHANNEL CHANGE | | | | | | 0.01 | 0.02 | 88 | 205 | |
| SUBTOTALS*: | | | 0.62 | | < 0.01 | 0.05 | | 1.53 | 0.19 | 5853 | 1344 | |

*Rounded totals are sum of actual impacts

NOTES:

NC DEPARTMENT OF TRANSPORTATION
 DIVISION OF HIGHWAYS
 6-2-14
 U-2579B FORSYTH COUNTY
 WINSTON SALEM NORTHERN BELTWAY
 (EASTERN SECTION) (FUTURE I-74)
 SHEET 62 OF 64

| WETLAND PERMIT IMPACT SUMMARY | | | | | | | | | | | | |
|-------------------------------|-----------------------|-------------------------------------|---------------------------------|-----------------------------|-----------------------------|--------------------------------------|--------------------------------|---------------------------|-----------------------|---|-------------------------------------|----------------------------|
| | | | WETLAND IMPACTS | | | | | SURFACE WATER IMPACTS | | | | |
| Site No. | Station (From/To) | Structure Size / Type | Permanent Fill In Wetlands (ac) | Temp. Fill In Wetlands (ac) | Excavation in Wetlands (ac) | Mechanized Clearing in Wetlands (ac) | Hand Clearing in Wetlands (ac) | Permanent SW impacts (ac) | Temp. SW impacts (ac) | Existing Channel Impacts Permanent (ft) | Existing Channel Impacts Temp. (ft) | Natural Stream Design (ft) |
| 13 | 20+00-21+40 -Y4RPBD- | ROAD FILL | 0.33 | | | | | | | | | |
| 14 | 629+95-635+90 -L- | ROAD FILL | 0.04 | | | | | 0.05 | | 688 | | |
| 15 | 636+32-641+55 -L- | ROAD FILL | 0.18 | | | | | 0.04 | | 332 | | |
| | | ROAD FILL-POND | | | | | | 2.38 | | | | |
| 15A | 644+00-645+00 -L- | ROAD FILL | | | | | | < 0.01 | | 108 | | |
| 16 | 643+56-644+61 -L- | ROAD FILL | | | | | | < 0.01 | | 104 | | |
| | | ROAD FILL-POND | | | | | | 0.16 | | | | |
| 17 | 663+65-667+00 -L- | ROAD FILL | 0.09 | | | < 0.01 | | 0.06 | | 928 | | |
| 18 | 667+15 -L- | 3 @ 12'x10' RCBC | | | | | | 0.06 | 0.02 | 377 | 67 | |
| | | STREAMBANK STABILIZATION | | | | | | 0.02 | 0.01 | 80 | 59 | |
| 19 | 668+50 -L- | ROAD FILL | 0.47 | | | 0.01 | | | | | | |
| 20 | 687+80-691+59 -L- | ROAD FILL | | | | | | 0.03 | | 163 | | |
| | | ROAD FILL-POND | | | | | | 0.85 | | | | 450 |
| 21 | 22+50 -Y1- | ROAD FILL | 0.02 | | | | | | | | | |
| 22 | 40+50 -Y4- | OUTLET PAD | 0.01 | | | | | | | | | |
| 23 * | 45+65 -Y4- | CULVERT EXTENSION | | | | | | 0.06 | 0.01 | 100 | 32 | |
| | | STREAMBANK STABILIZATION | | | | | | 0.02 | 0.06 | 54 | 89 | |
| 23A | 44+95-45+18 -Y4- | ROAD FILL | | | | | | < 0.01 | | 57 | | |
| 23B | 45+07-46+34 -Y4- | ROAD FILL | | | | | | 0.01 | | 135 | | |
| 24 | 80+73-81+57-Y4RPBD- | ROAD FILL | | | | | | 0.02 | | 202 | | |
| 24A | 80+50-81+51-Y4RPBD- | ROAD FILL | 0.06 | | | | | | | | | |
| 25 | 37+31 -Y4RPA- | 30" RCP | | | | | | < 0.01 | | 73 | | |
| | | STREAMBANK STABILIZATION | | | | | | < 0.01 | < 0.01 | 21 | 16 | |
| SUBTOTALS*: | | | 1.20 | | | 0.02 | | 3.67 | 0.03 | 3268 | 142 | 450 |

*Rounded totals are sum of actual impacts

NOTES:

Revised: 5-18-14

SEE SHEET 64 FOR PERMIT IMPACTS QUANTITIES FOR SITES 23 AND 23A. PREVIOUS IMPACTS FOR SHEET 63 FOR PERMANENT SURFACE WATER IMPACTS: 3.77 AC, TEMP. SURFACE WATER IMPACTS: 0.9 AC, EXISTING CHANNEL IMPACTS PERMANENT: 3422 LF, EXISTING CHANNEL IMPACTS TEMP.: 263 LF

NC DEPARTMENT OF TRANSPORTATION
 DIVISION OF HIGHWAYS
 6-2-14 (Revised 11-19-18)
 U-2579B FORSYTH COUNTY
 WINSTON SALEM NORTHERN BELTWAY
 (EASTERN SECTION) (FUTURE I-74)
 SHEET 63 OF 64

| WETLAND PERMIT IMPACT SUMMARY | | | | | | | | | | | | |
|--------------------------------------|----------------------------------|---|---------------------------------|-----------------------------|-----------------------------|--------------------------------------|--------------------------------|------------------------------|-----------------------|---|-------------------------------------|----------------------------|
| | | | WETLAND IMPACTS | | | | | SURFACE WATER IMPACTS | | | | |
| Site No. | Station (From/To) | Structure Size / Type | Permanent Fill In Wetlands (ac) | Temp. Fill In Wetlands (ac) | Excavation in Wetlands (ac) | Mechanized Clearing in Wetlands (ac) | Hand Clearing in Wetlands (ac) | Permanent SW impacts (ac) | Temp. SW impacts (ac) | Existing Channel Impacts Permanent (ft) | Existing Channel Impacts Temp. (ft) | Natural Stream Design (ft) |
| 26 | 29+16-31+12 -Y4RPC- | ROAD FILL-POND | | | | | | 0.38 | | | | |
| 27A | 104+62 - 107+53 -Y4- | ROAD FILL | | | | | | 0.02 | | 205 | | |
| 27B | 107+60 -Y4- | 42" WELDED STEEL | 0.05 | | | | | 0.01 | < 0.01 | 130 | 14 | |
| 27C | 107+58 - 108+44 -Y4- | 30" RCP | | | | | | < 0.01 | | 116 | | |
| 28* | 50+50 - 56+00 -Y4- Rt | STREAMBANK STABILIZATION | | | | | | 0.02 | 0.15 | 365 | 188 | |
| 29 | 145+62 -Y4- | ROAD FILL | | | | < 0.01 | | | | | | |
| 30 | 64+34 -Y4- | STREAMBANK STABILIZATION | | | | | | < 0.01 | | 28 | | |
| 31 | 557+28 -L- | STREAMBANK STABILIZATION | | | | | | < 0.01 | | 21 | | |
| Permit Modifications* | | | | | | | | | | | | |
| 23 | 44+10 to 47+96 -Y4- | 3 @ 8' x 9' RCBC Extension Streambank Stabilization | | | | | | 0.06 0.02 | 0.05 | 151 36 | 121 | |
| 28 | 47+96 to 56+85 -Y4- | 2 @ 10' x 10' RCBC and 1 @ 10' x 8' RCBC Streambank Stabilization | | | | | | 0.12 0.04 | <0.01 | 598 194 | 127 | |
| SUBTOTALS*: | | | 0.05 | | | < 0.01 | | 0.66 | 0.06 | 1479 | 262 | |
| SUBTOTALS FROM PAGE 1*: | | | 0.62 | | < 0.01 | 0.05 | | 1.53 | 0.19 | 5853 | 1344 | |
| SUBTOTALS FROM PAGE 2*: | | | 1.20 | | | 0.02 | | 3.67 | 0.03 | 3268 | 142 | 450 |
| TOTALS*: | | | 1.87 | | < 0.01 | 0.08 | | 5.86 | 0.28 | 10600 | 1748 | 450 |

*Rounded totals are sum of actual impacts

NOTES:

Revised: 5-18-14

PREVIOUS IMPACTS FOR SHEET 64 FOR PERMANENT SURFACE WATER IMPACTS: 0.44 AC, TEMP. SURFACE WATER IMPACTS: 0.16 AC, EXISTING CHANNEL IMPACTS PERMANENT: 865 LF, EXISTING CHANNEL IMPACTS TEMP.: 202 LF

PREVIOUS TOTAL IMPACTS FOR SHEET 64 FOR PERMANENT SURFACE WATER IMPACTS: 5.73 AC, TEMP. SURFACE WATER IMPACTS: 0.44 AC, EXISTING CHANNEL IMPACTS PERMANENT: 10140 LF, EXISTING CHANNEL IMPACTS TEMP.: 1809 LF

NC DEPARTMENT OF TRANSPORTATION
 DIVISION OF HIGHWAYS
 6-2-14 (Revised 11-19-18)
 U-2579B FORSYTH COUNTY
 WINSTON SALEM NORTHERN BELTWAY
 (EASTERN SECTION) (FUTURE I-74)
 SHEET 64 OF 64