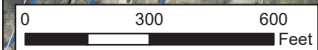


- Project Study Area
- Project Limits
- Adjacent STIP Project
- Railroad
- Lake Crabtree County Park
- Town of Cary
- Town of Morrisville

Figure 1 - Project Vicinity
 STIP No. U-5811
 SR 1002 (Aviation Parkway)
 Widening from NC 54 to I-40
 Morrisville/Cary, Wake County



Parcel Boundary	Delineated Stream	Park	Surveyed, Local Landmark
Proposed Edge of Travel	Delineated Wetland	National Register and Local Landmark	National Register Boundary
Railroad	Pond/Open Water	Determined Eligible for National Register	

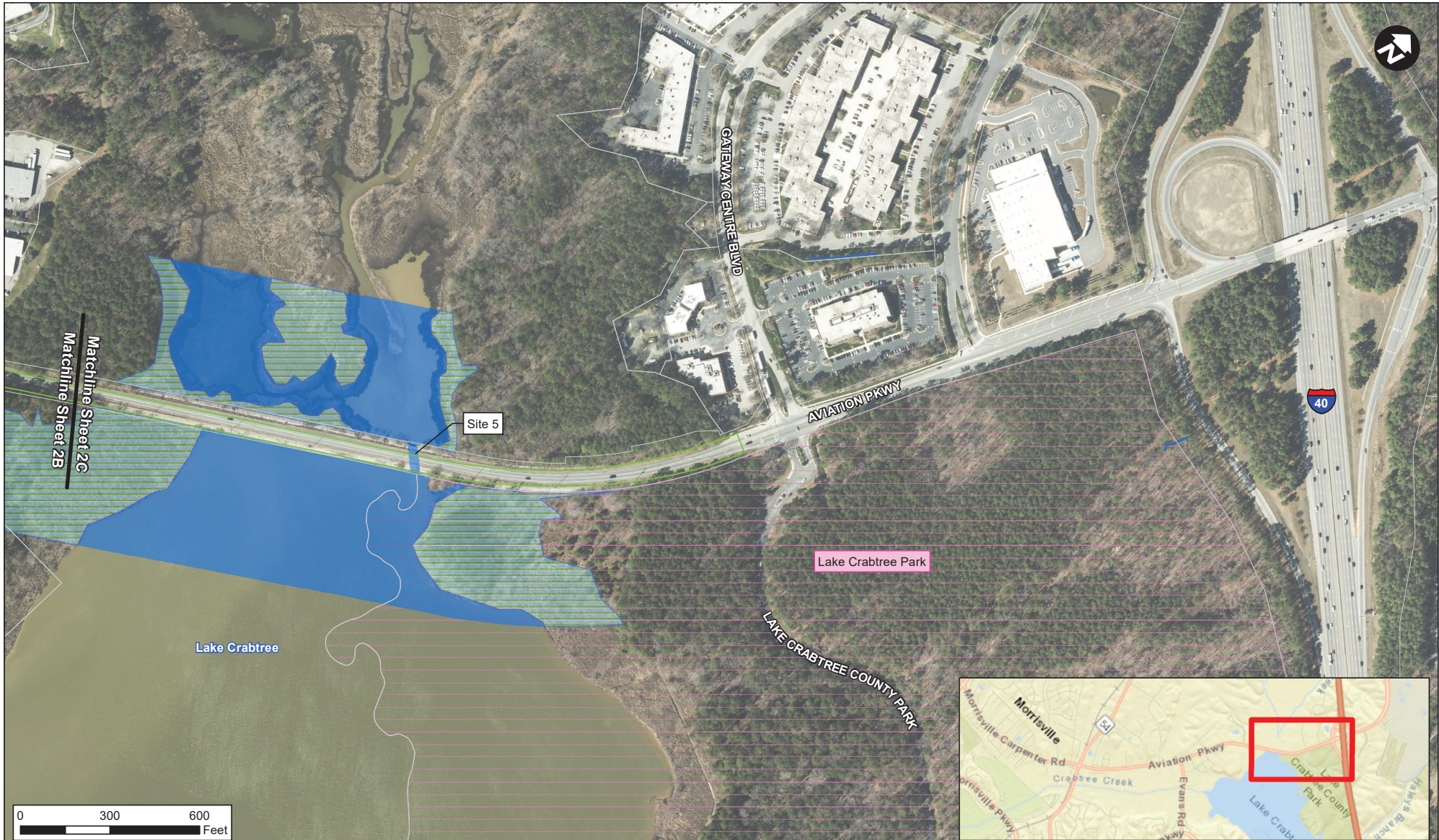
Aviation Parkway Widening From NC 54 to I-40 in Wake County		Environmental Features Map	
Figure 3A		U-5811	
		Division 5	



- Parcel Boundary
- Proposed Edge of Travel
- Delineated Stream
- Delineated Wetland
- Pond/Open Water

**Aviation Parkway
Widening**
From NC 54 to I-40 in Wake County

Environmental Features Map	
Figure 3B	U-5811
	Division 5



- Parcel Boundary
- Proposed Edge of Travel
- Delineated Stream
- Delineated Wetland
- Pond/Open Water
- Park

**Aviation Parkway
Widening**

From NC 54 to I-40 in Wake County

Environmental Features Map	
Figure 3C	U-5811 Division 5



Site 1
Existing: 3-60" RCP, 60'
Proposed: 2@ 8'x8' RCBC with 2' sill (buried 1'), 160'



- Proposed Sidewalk / Multi-Use Path
- Proposed Edge of Travel
- Proposed Drainage Structure
- Delineated Stream

Figure 2A - Major Hydraulic Structures
 STIP No. U-5811
 SR 1002 (Aviation Parkway)
 Widening from NC 54 to I-40
 Morrisville/Cary, Wake County



Inlet looking downstream



Inlet looking upstream

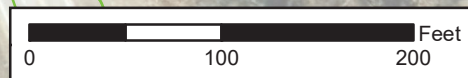
Site 1A
Existing: 1-6'x6.5' RCBC
Proposed: 2 @ 10'x7' RCBC (buried 1')
with 2' sill in one barrel*, 39'
*Alternate sizing requiring grade increase
on NC 54 is 2 @ 8'x8' RCBC (buried 1')
with 2' sill in one barrel



Outlet looking upstream



Outlet looking downstream



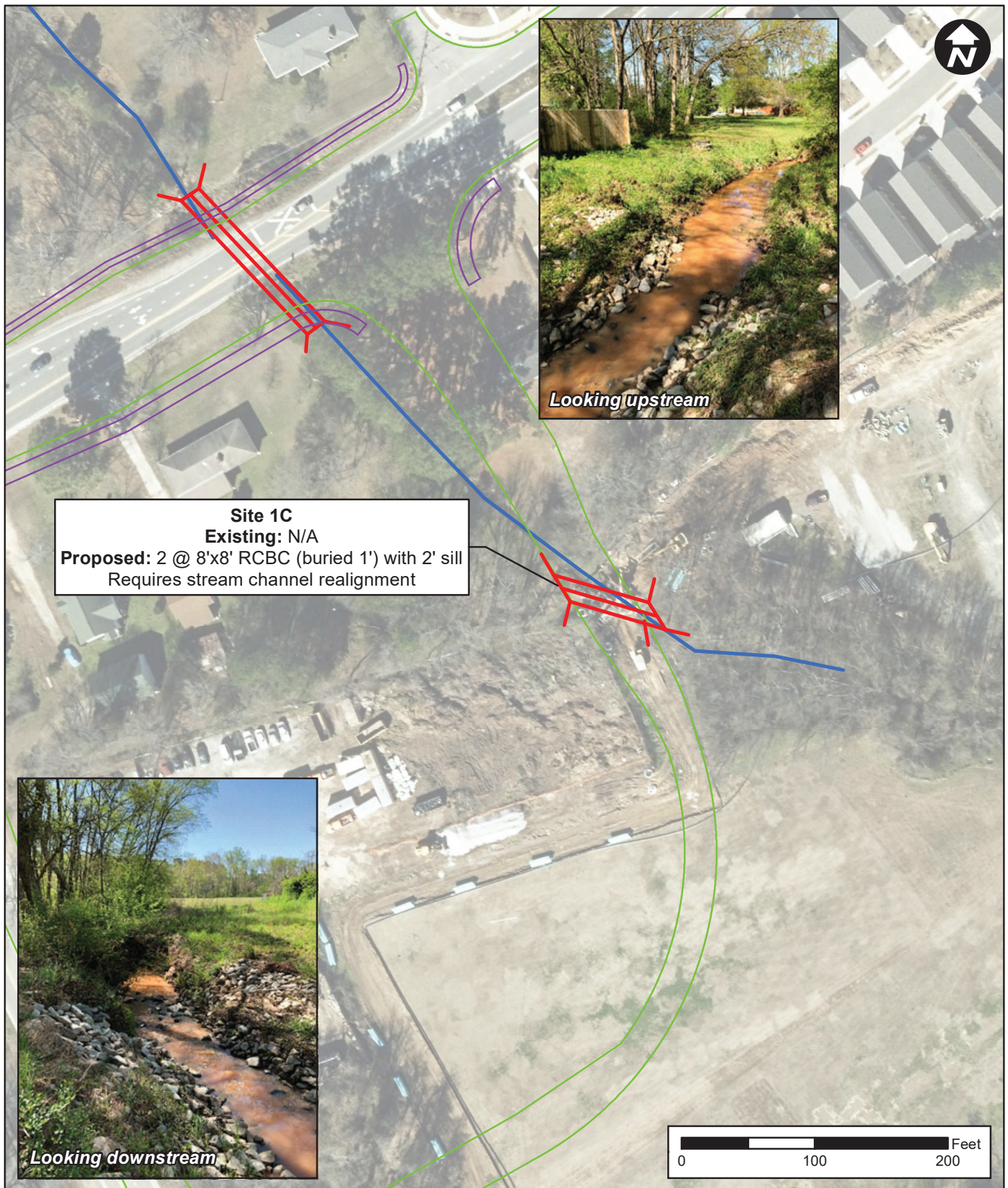
- Proposed Edge of Travel
- Proposed Drainage Structure
- Delineated Stream

Figure 2B - Major Hydraulic Structures
STIP No. U-5811
SR 1002 (Aviation Parkway)
Widening from NC 54 to I-40
Morrisville/Cary, Wake County



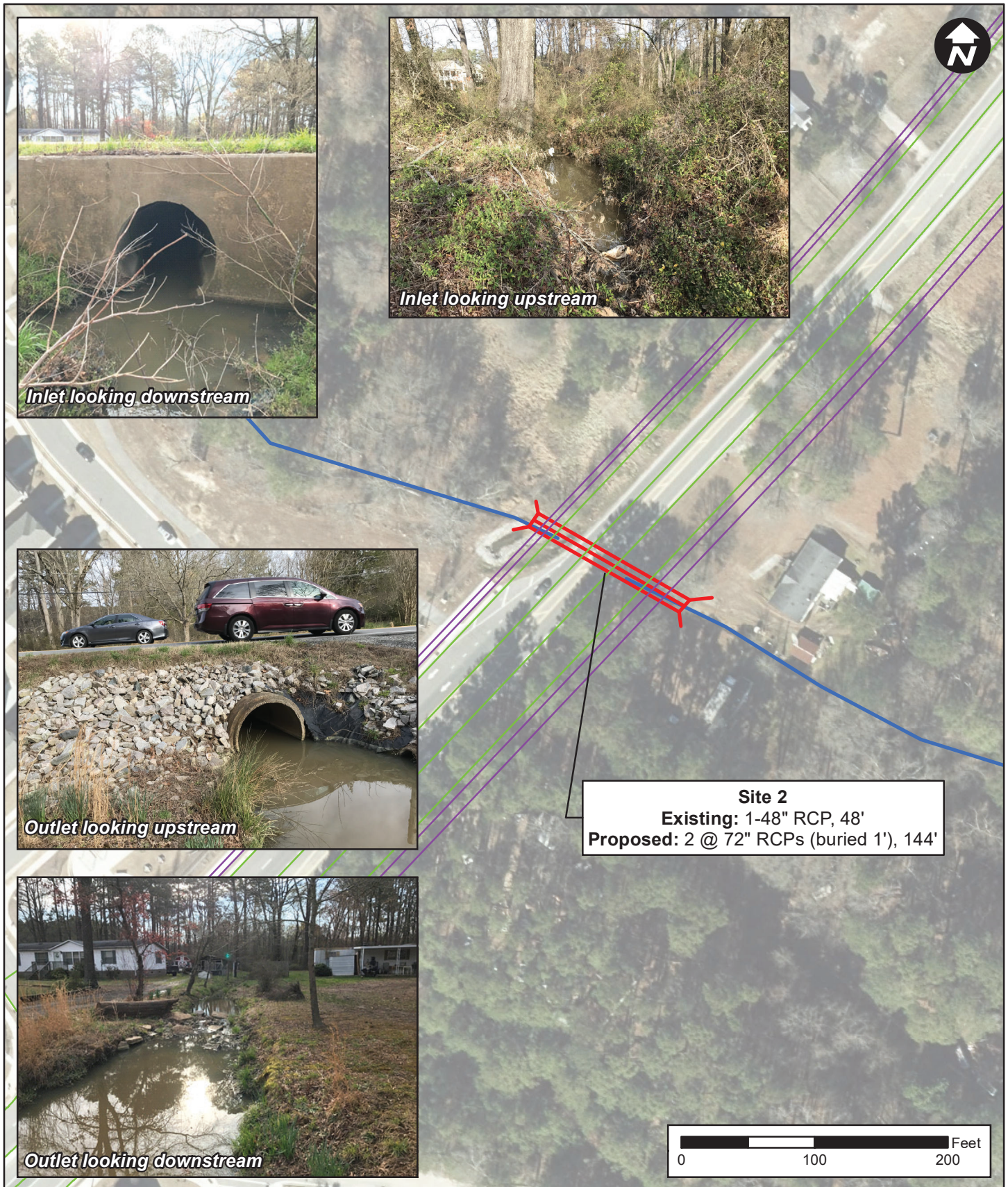
- Proposed Edge of Travel
- Proposed Drainage Structure
- Delineated Stream

Figure 2C - Major Hydraulic Structures
 STIP No. U-5811
 SR 1002 (Aviation Parkway)
 Widening from NC 54 to I-40
 Morrisville/Cary, Wake County



- Proposed Sidewalk / Multi-Use Path
- Proposed Edge of Travel
- Proposed Drainage Structure
- Delineated Stream

Figure 2D - Major Hydraulic Structures
 STIP No. U-5811
 SR 1002 (Aviation Parkway)
 Widening from NC 54 to I-40
 Morrisville/Cary, Wake County



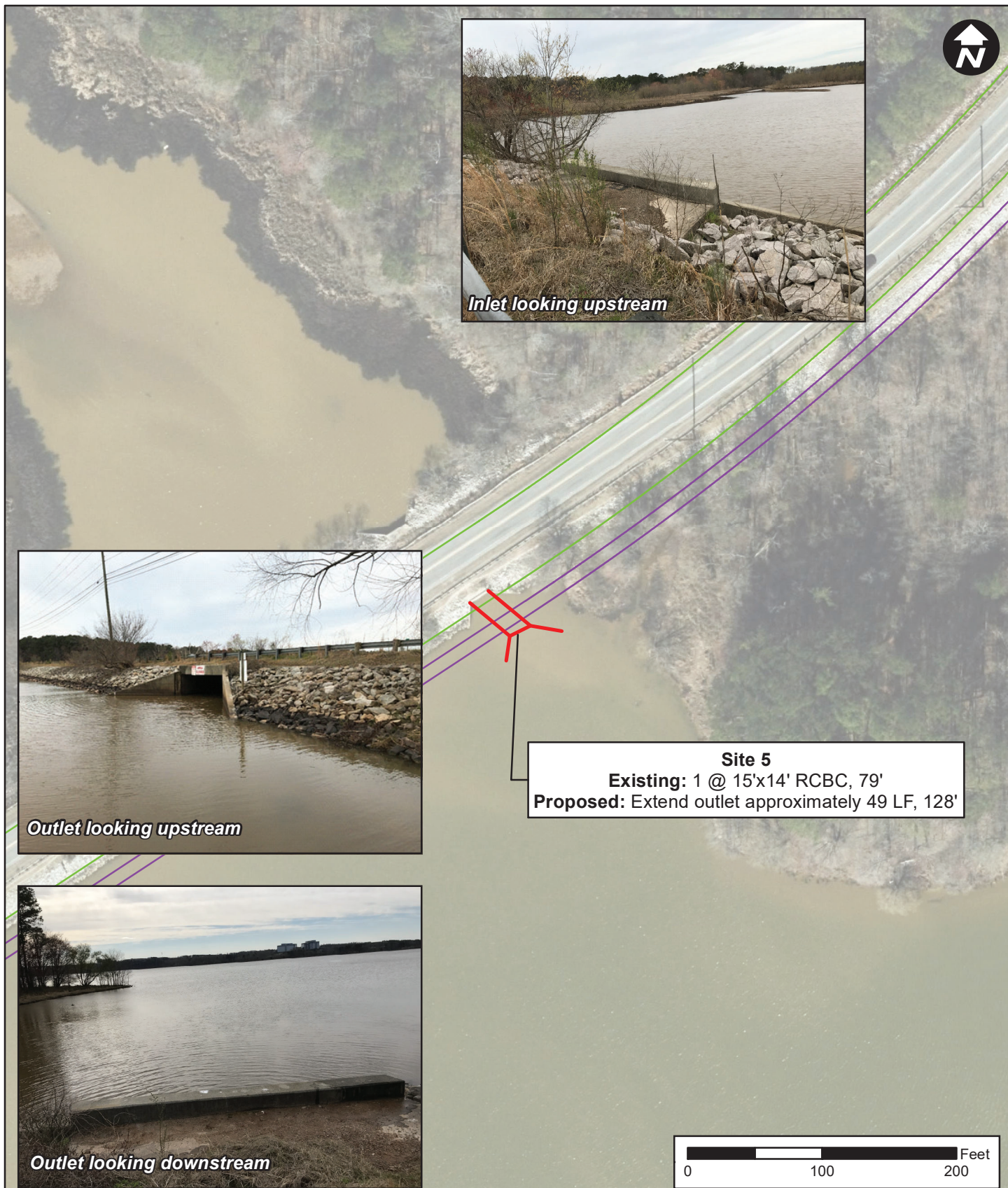
- Proposed Sidewalk / Multi-Use Path
- Proposed Edge of Travel
- Proposed Drainage Structure
- Delineated Stream

Figure 2E - Major Hydraulic Structures
 STIP No. U-5811
 SR 1002 (Aviation Parkway)
 Widening from NC 54 to I-40
 Morrisville/Cary, Wake County



- Proposed Sidewalk / Multi-Use Path
- Proposed Edge of Travel
- Proposed Drainage Structure
- Delineated Stream

Figure 2F - Major Hydraulic Structures
 STIP No. U-5811
 SR 1002 (Aviation Parkway)
 Widening from NC 54 to I-40
 Morrisville/Cary, Wake County



- Proposed Sidewalk / Multi-Use Path
- Proposed Edge of Travel
- Proposed Drainage Structure

Figure 2G - Major Hydraulic Structures
 STIP No. U-5811
 SR 1002 (Aviation Parkway)
 Widening from NC 54 to I-40
 Morrisville/Cary, Wake County