




Source: Esri, DigitalGlobe, GeoEye, Earthstar Geographics, CNES/Airbus DS, USDA, USGS, AeroGRID, IGN, and the GIS User Community

-  Page Number
-  Alternative 1 (modified)
-  Study Area

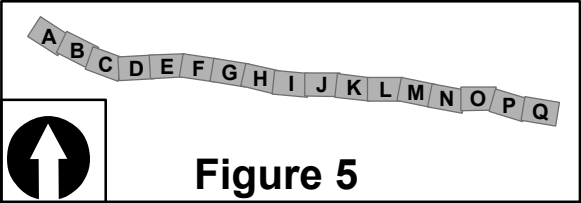
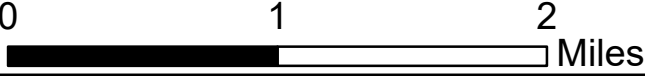
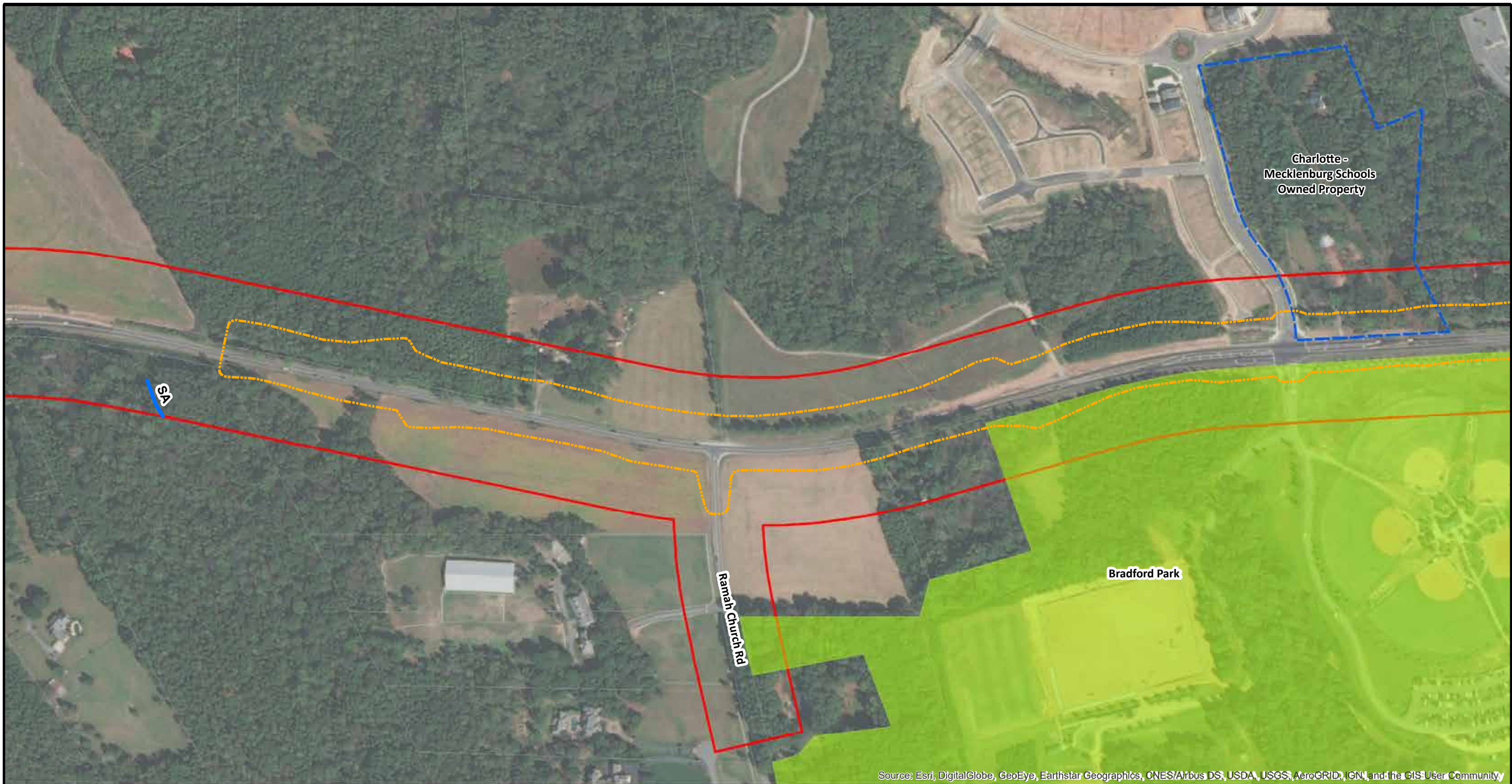


Figure 5



**Jurisdictional Features Impacts Map**  
**Alternative 1 (modified)**  
R-5706 - NC 73 Widening from Davidson-Concord  
Road to US 29  
Mecklenburg and Cabarrus Counties  
November 2019

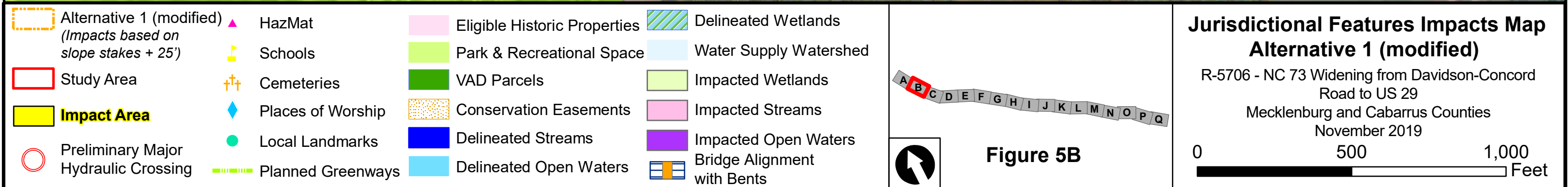
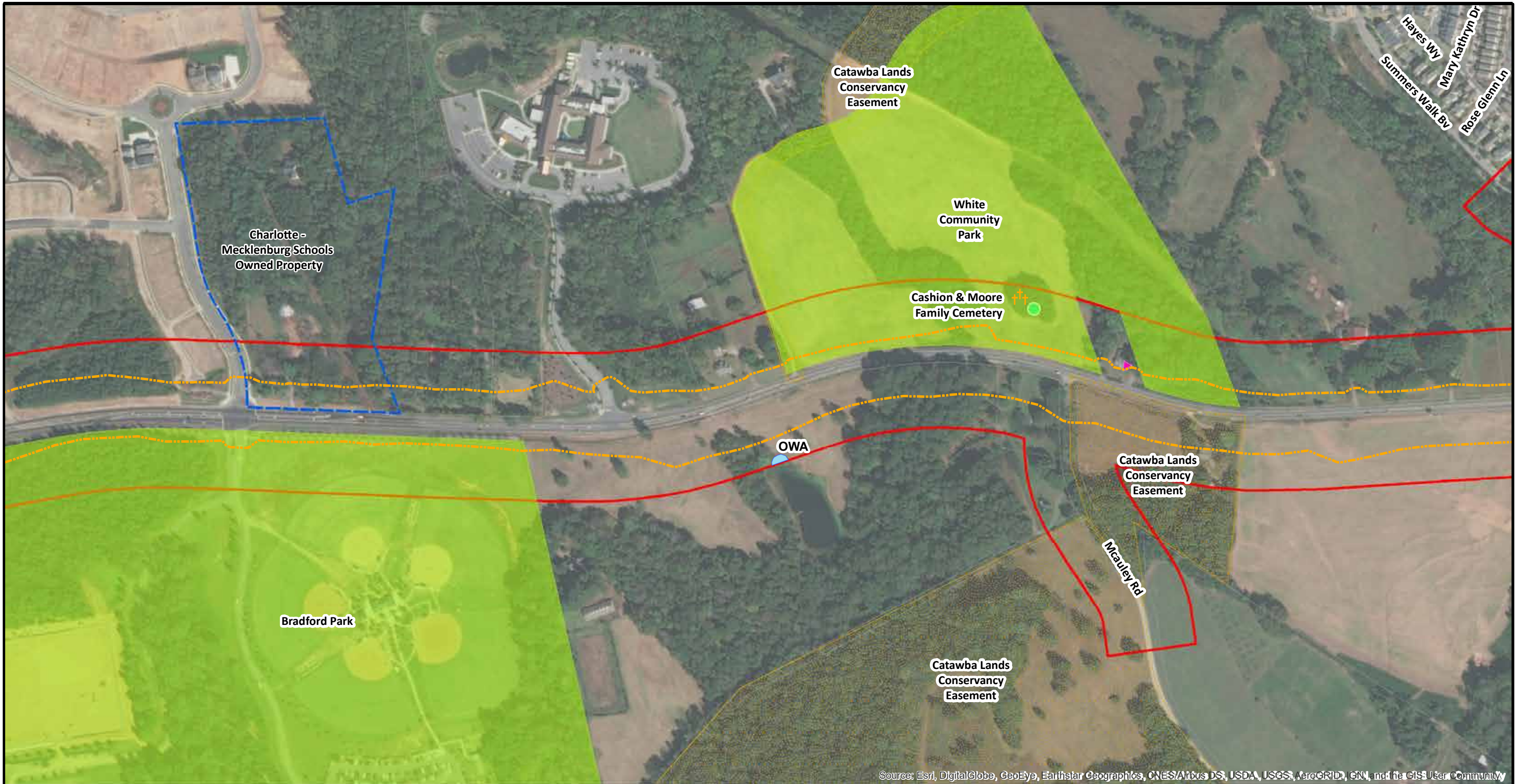




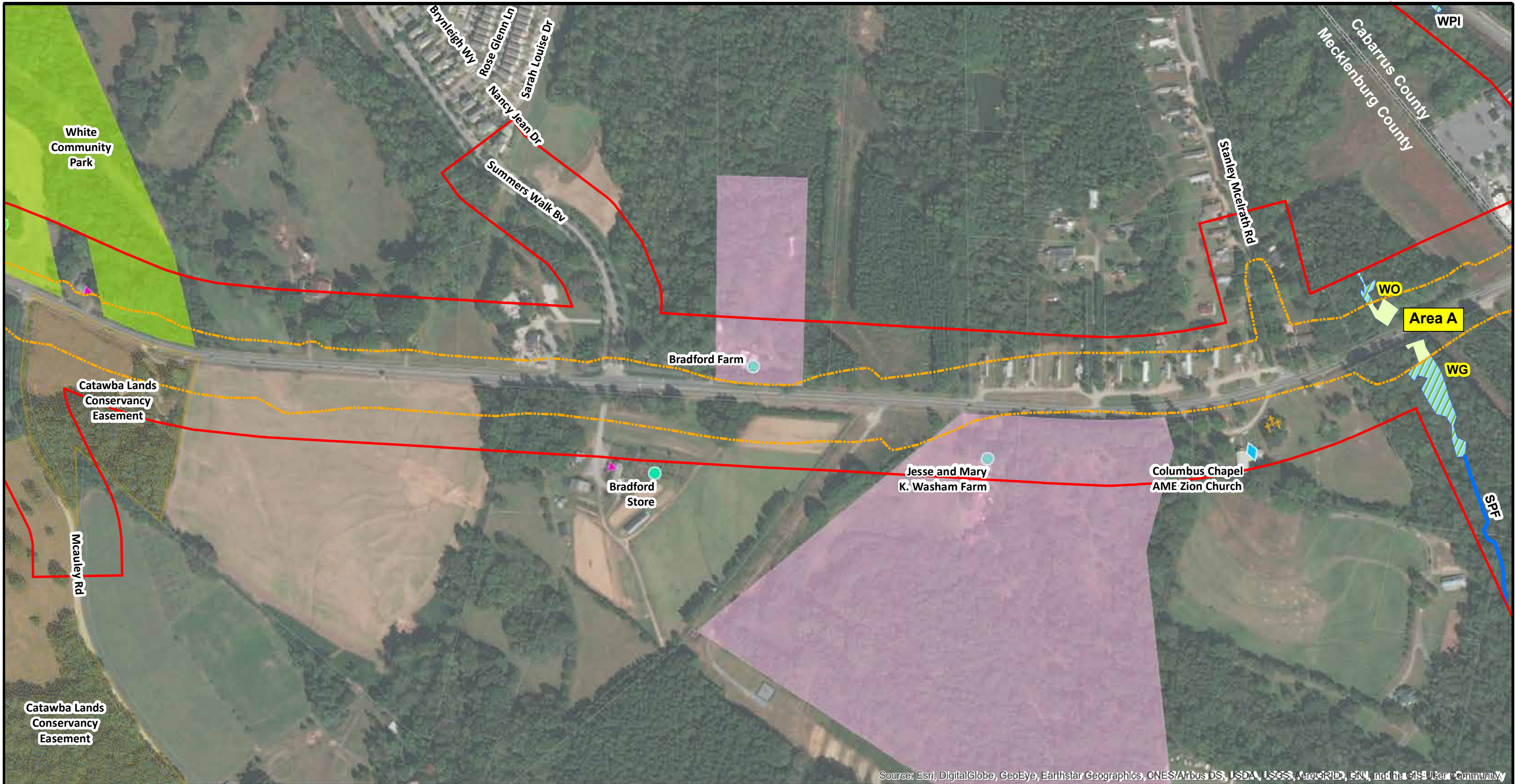
Source: Esri, DigitalGlobe, GeoEye, Earthstar Geographics, CNES/Airbus DS, USDA, USGS, AeroGRID, IGN, and the GIS User Community











Alternative 1 (modified) (Impacts based on slope stakes + 25')	HazMat	Eligible Historic Properties	Delineated Wetlands
Study Area	Schools	Park & Recreational Space	Water Supply Watershed
<b>Impact Area</b>	Cemeteries	VAD Parcels	Impacted Wetlands
Preliminary Major Hydraulic Crossing	Places of Worship	Conservation Easements	Impacted Streams
Planned Greenways	Local Landmarks	Delineated Streams	Impacted Open Waters
		Delineated Open Waters	Bridge Alignment with Bents

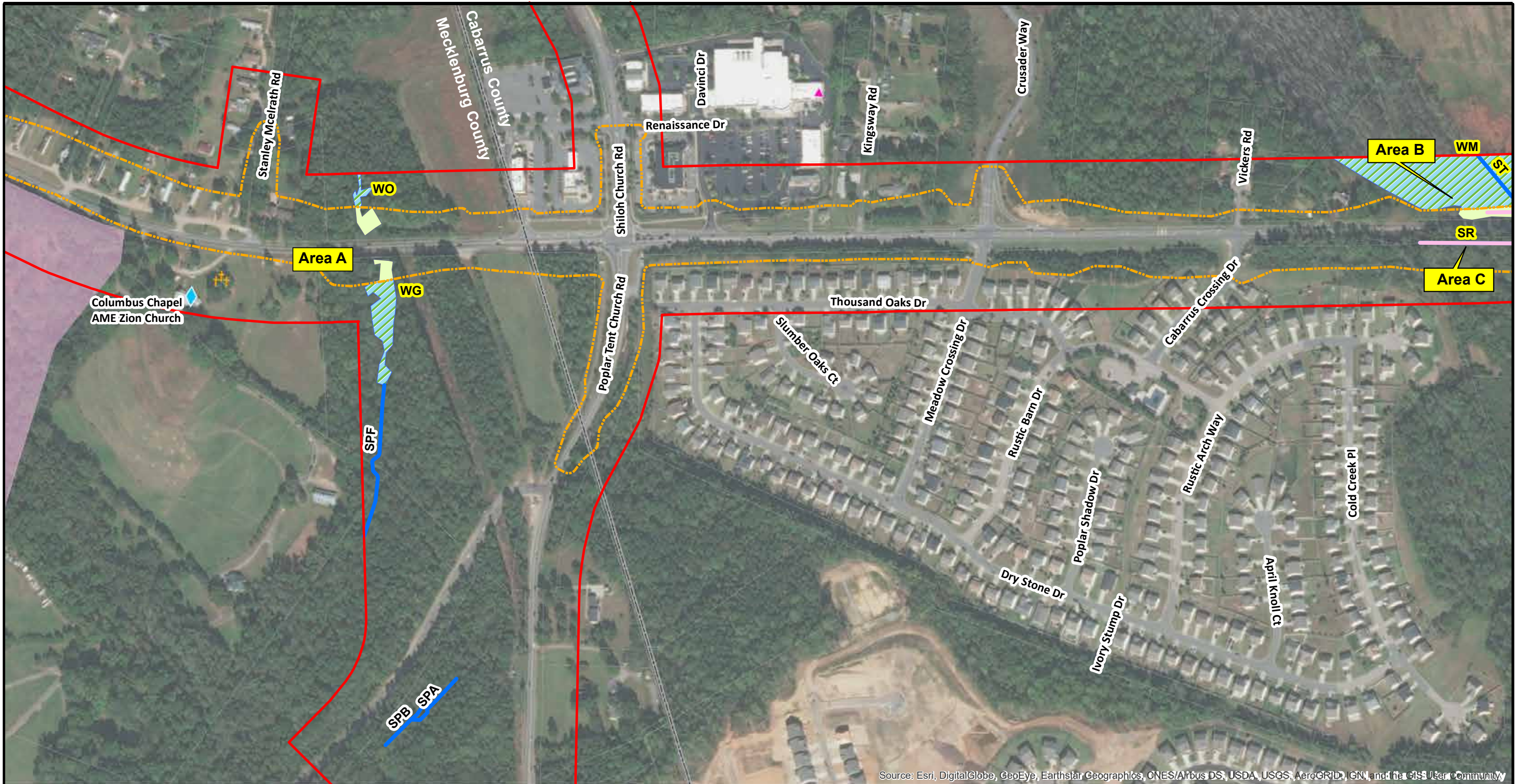
**Figure 5C**

### Jurisdictional Features Impacts Map Alternative 1 (modified)

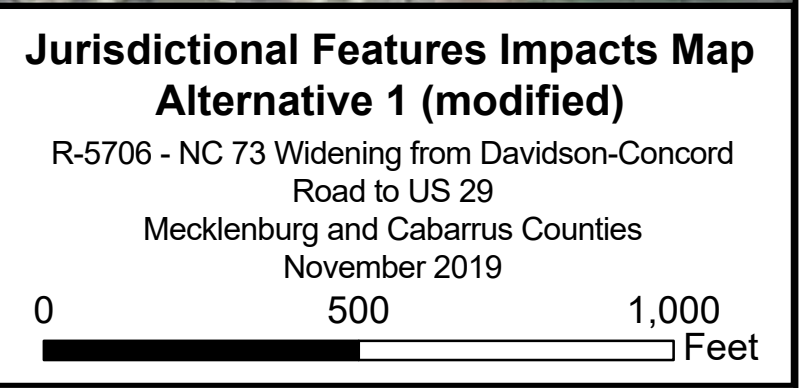
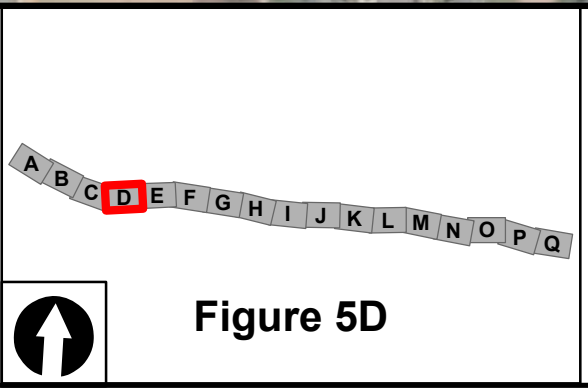
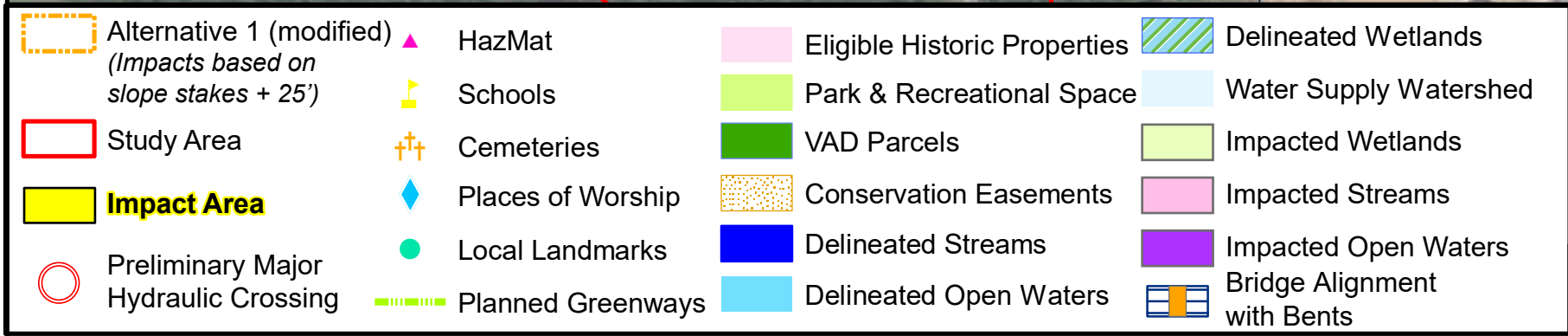
R-5706 - NC 73 Widening from Davidson-Concord Road to US 29  
Mecklenburg and Cabarrus Counties  
November 2019

0 500 1,000 Feet

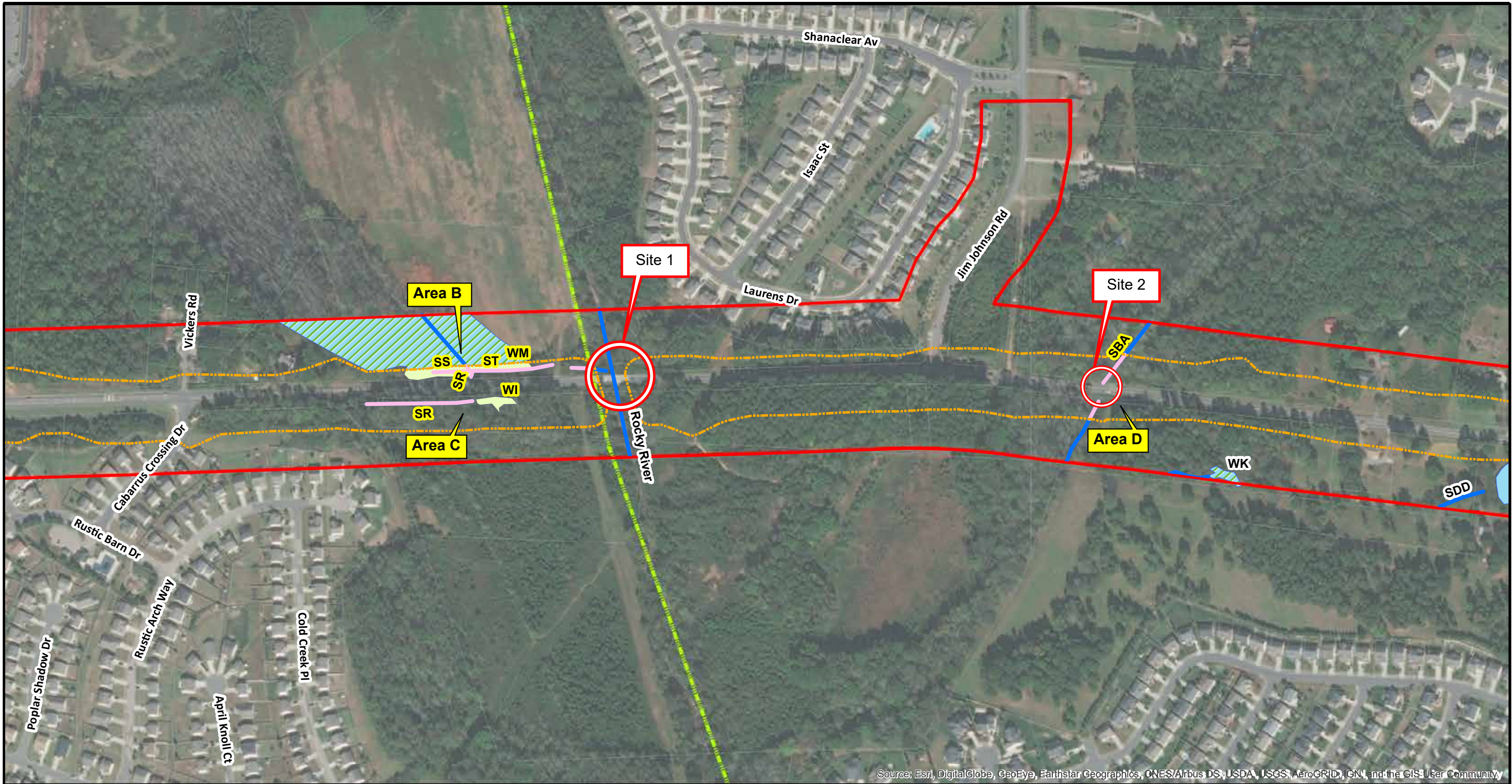




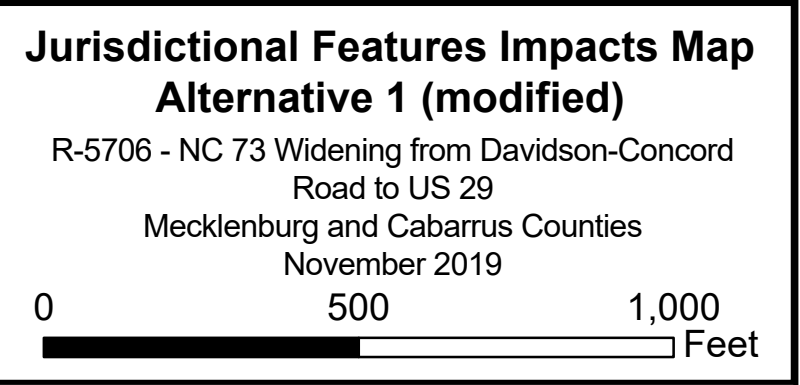
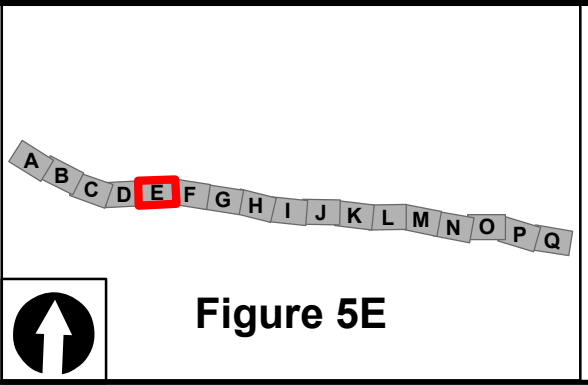
Source: Esri, DigitalGlobe, GeoEye, Earthstar Geographics, CNES/Airbus DS, USDA, USGS, AeroGRID, IGN, and the GIS User Community







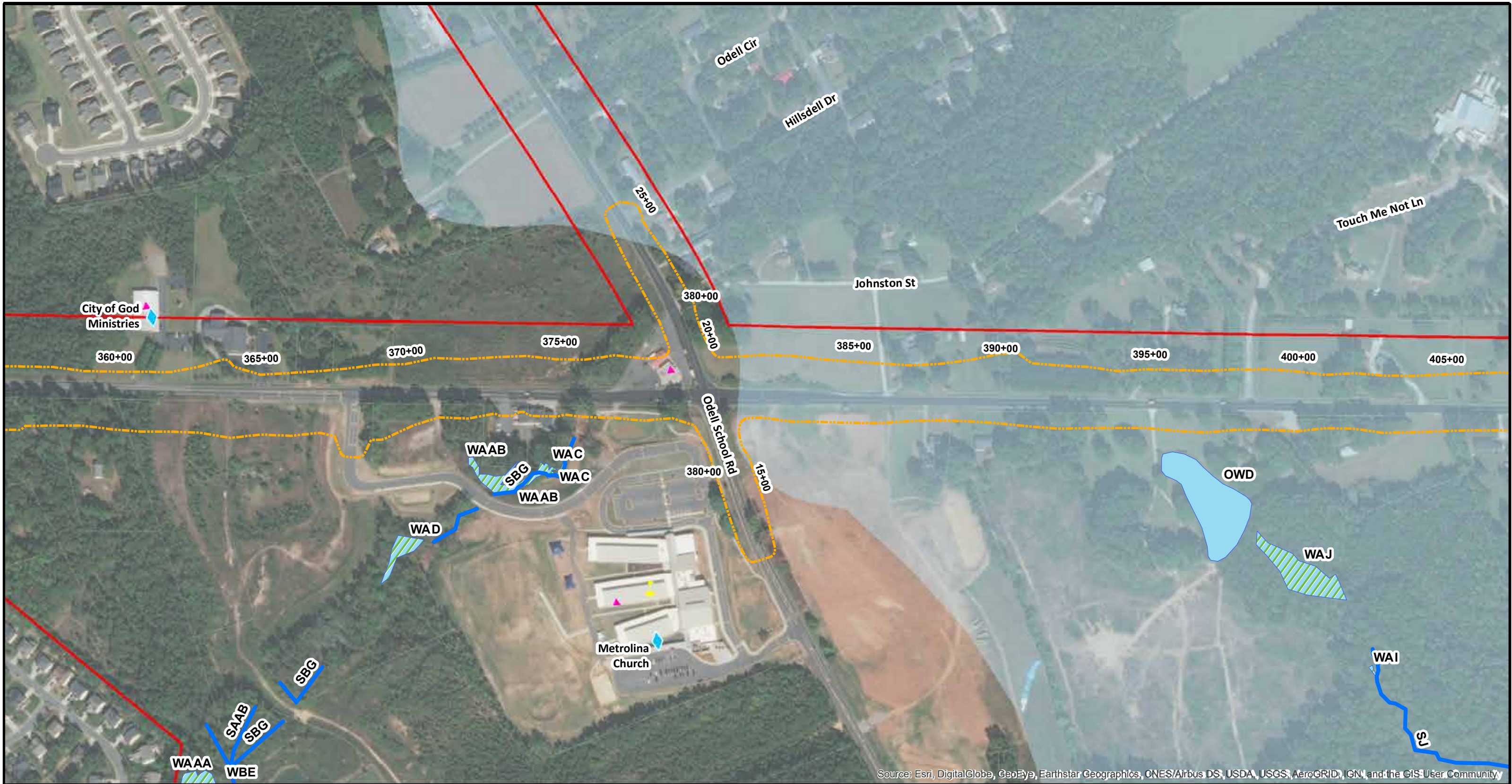
Source: Esri, DigitalGlobe, GeoEye, Earthstar Geographics, CNES/Airbus DS, USDA, USGS, AeroGRID, IGN, and the GIS User Community



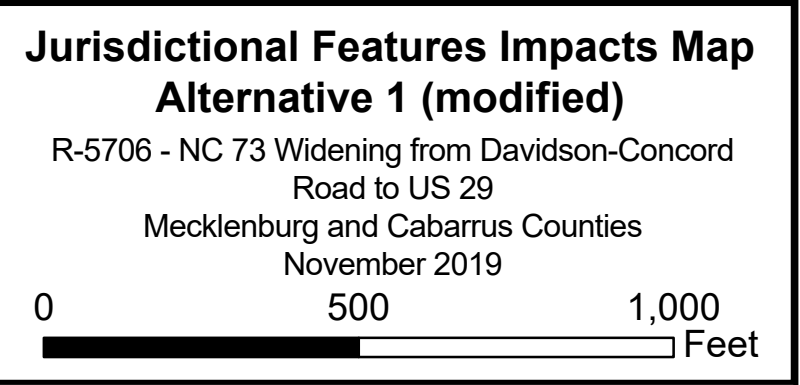
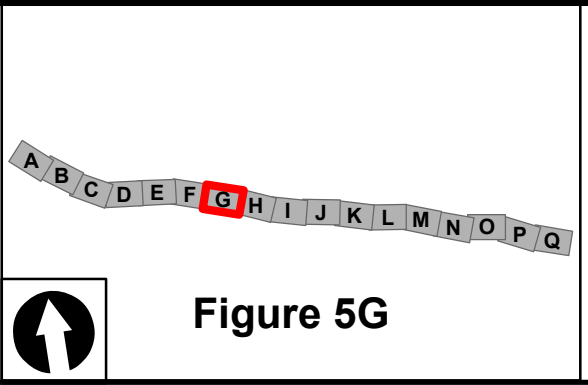




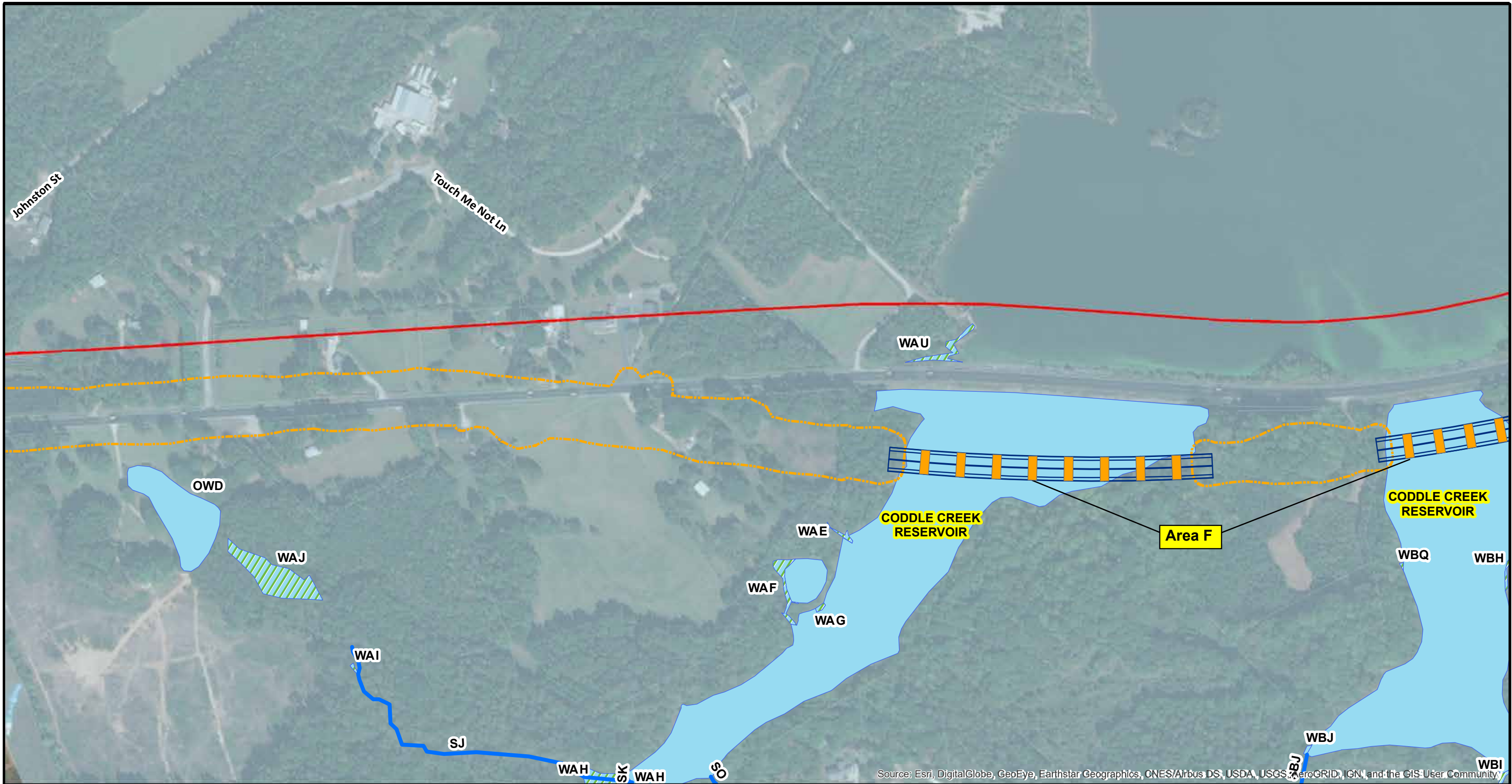




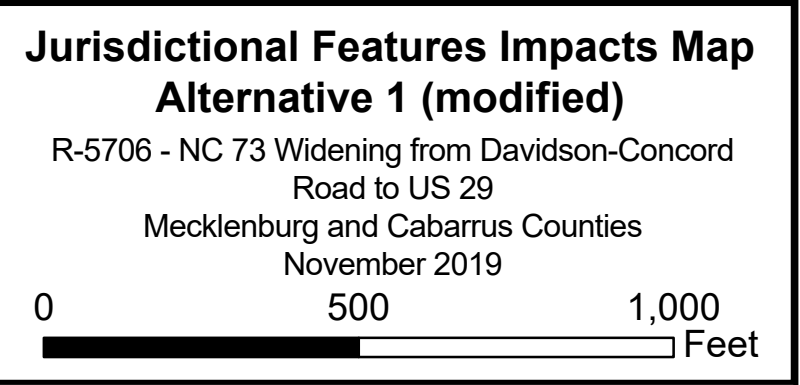
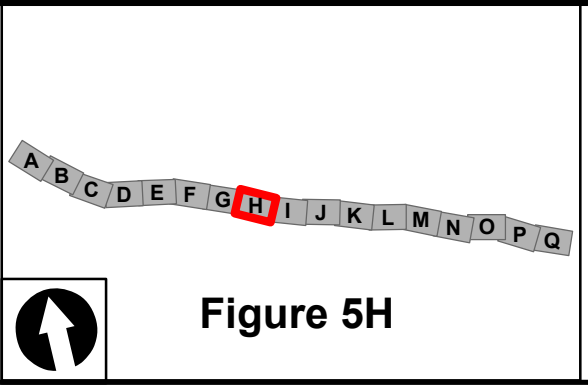
Source: Esri, DigitalGlobe, GeoEye, Earthstar Geographics, CNES/Airbus DS, USDA, USGS, AeroGRID, IGN, and the GIS User Community







Source: Esri, DigitalGlobe, GeoEye, Earthstar Geographics, CNES/Airbus DS, USDA, USGS, AeroGRID, IGN, and the GIS User Community







Source: Esri, DigitalGlobe, GeoEye, Earthstar Geographics, CNES/Airbus DS, USDA, USGS, AeroGRID, IGN, and the GIS User Community

Alternative 1 (modified) <i>(Impacts based on slope stakes + 25')</i>	HazMat	Eligible Historic Properties	Delineated Wetlands
Study Area	Schools	Park & Recreational Space	Water Supply Watershed
<b>Impact Area</b>	Cemeteries	VAD Parcels	Impacted Wetlands
Preliminary Major Hydraulic Crossing	Places of Worship	Conservation Easements	Impacted Streams
Planned Greenways	Local Landmarks	Delineated Streams	Impacted Open Waters
		Delineated Open Waters	Bridge Alignment with Bents

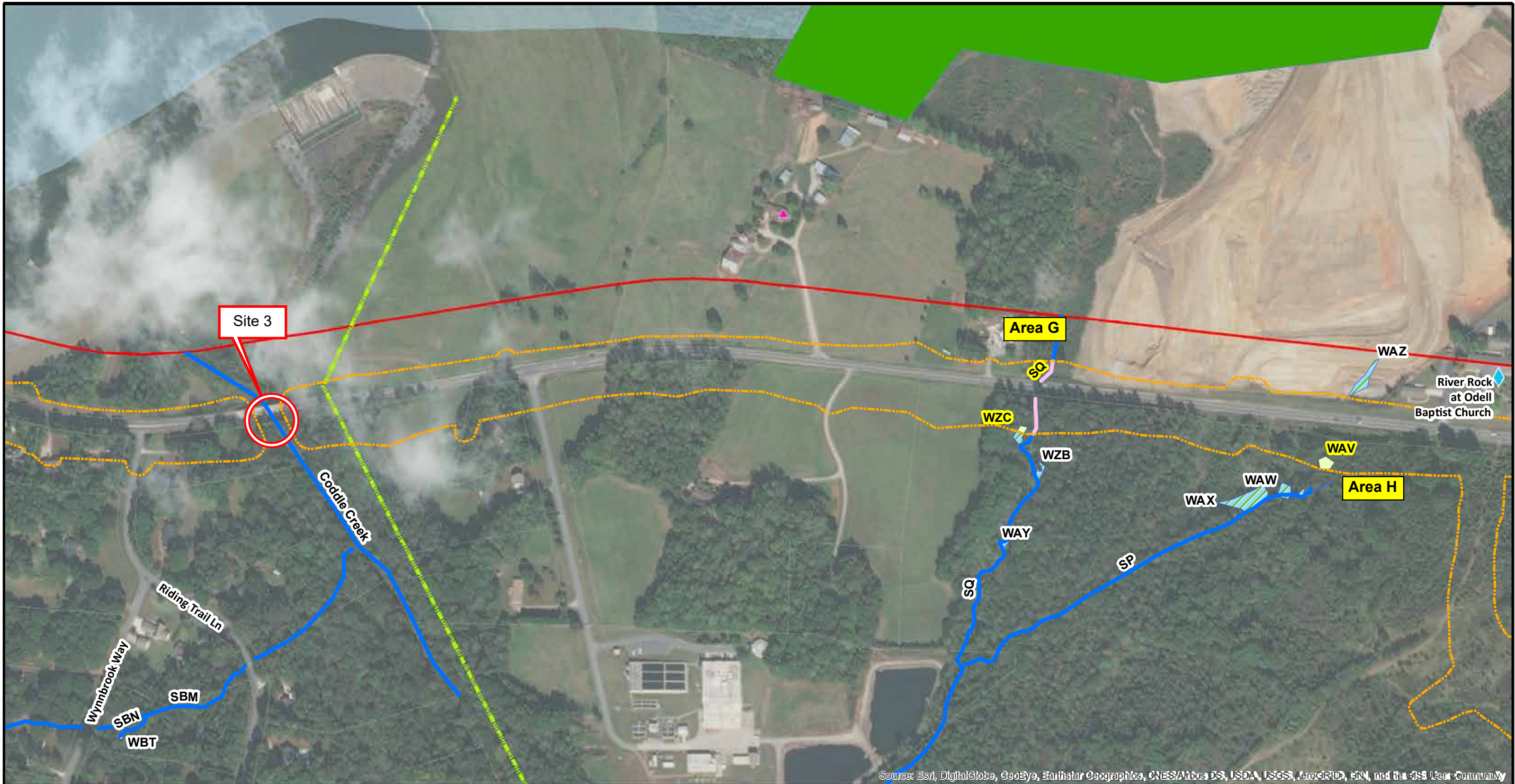
**Figure 5I**

**Jurisdictional Features Impacts Map**  
**Alternative 1 (modified)**

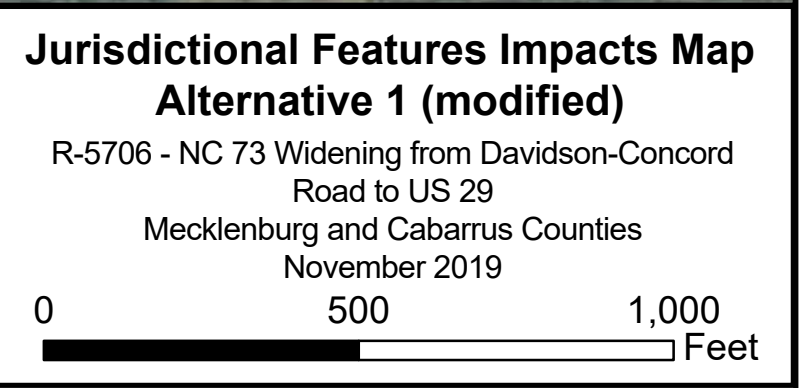
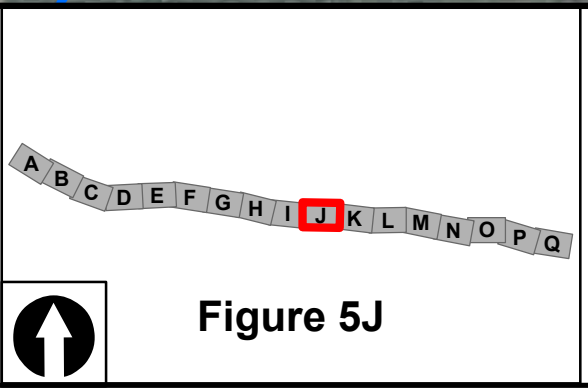
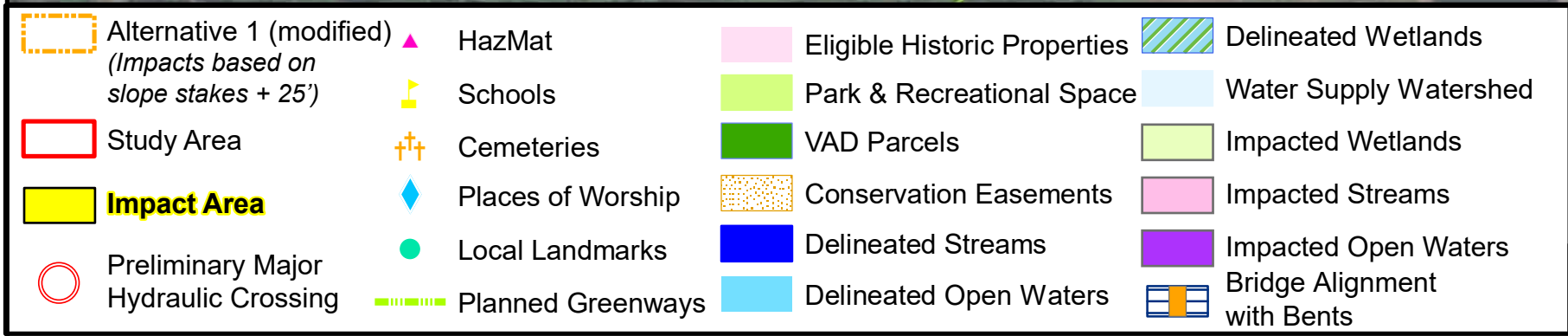
R-5706 - NC 73 Widening from Davidson-Concord Road to US 29  
Mecklenburg and Cabarrus Counties  
November 2019

0 500 1,000 Feet





Source: Esri, DigitalGlobe, GeoEye, Earthstar Geographics, CNES/Airbus DS, USDA, USGS, AeroGRID, IGN, and the GIS User Community

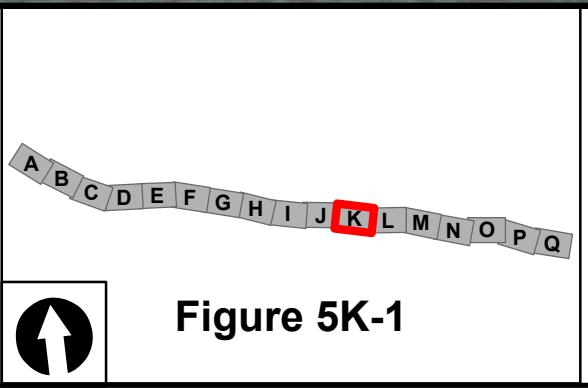






Source: Esri, DigitalGlobe, GeoEye, Earthstar Geographics, CNES/Airbus DS, USDA, USGS, AeroGRID, IGN, and the GIS User Community

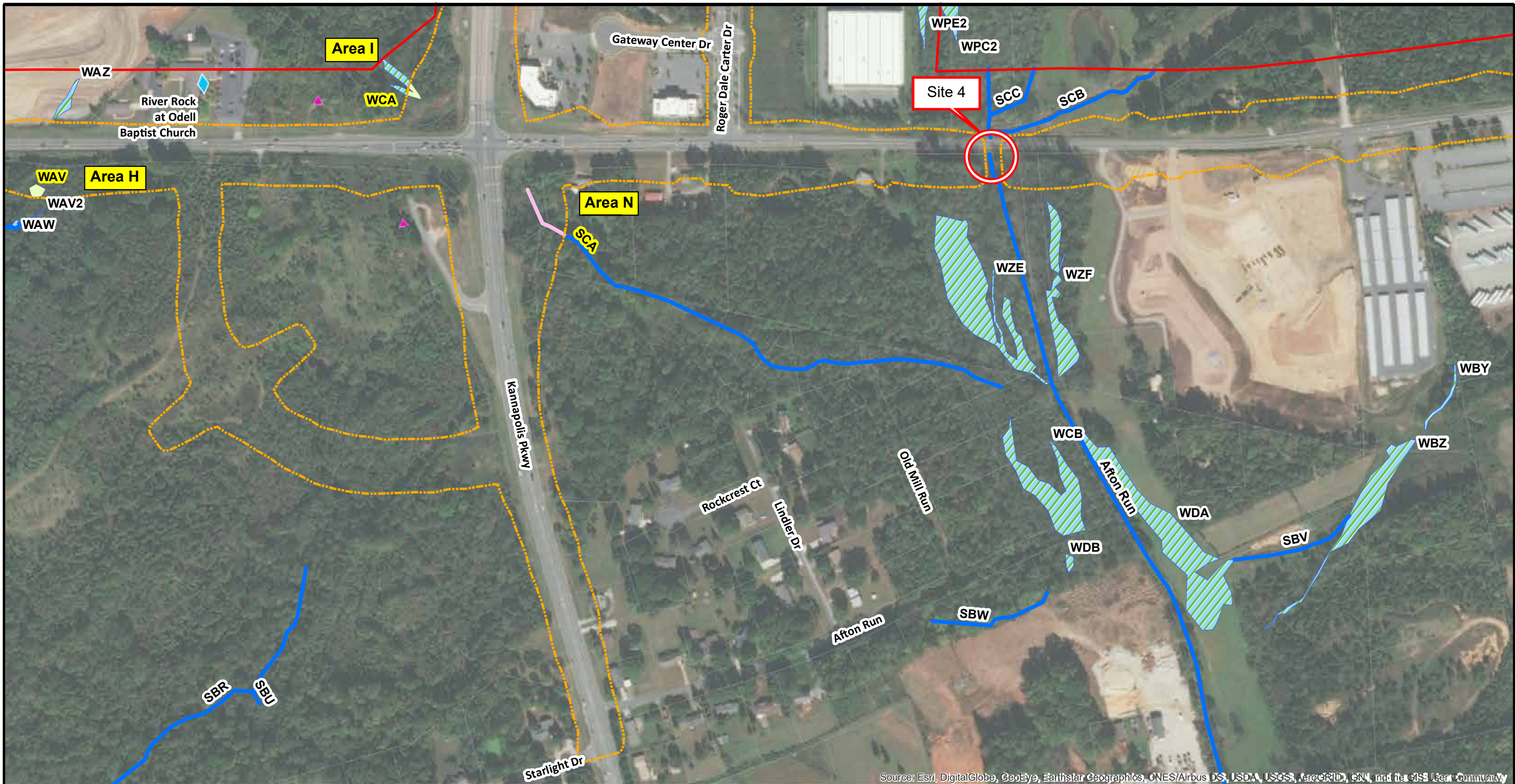
	Alternative 1 (modified) (Impacts based on slope stakes + 25')		HazMat		Eligible Historic Properties		Delineated Wetlands
	Study Area		Schools		Park & Recreational Space		Water Supply Watershed
	<b>Impact Area</b>		Cemeteries		VAD Parcels		Impacted Wetlands
	Preliminary Major Hydraulic Crossing		Places of Worship		Conservation Easements		Impacted Streams
			Local Landmarks		Delineated Streams		Impacted Open Waters
			Planned Greenways		Delineated Open Waters		Bridge Alignment with Bents



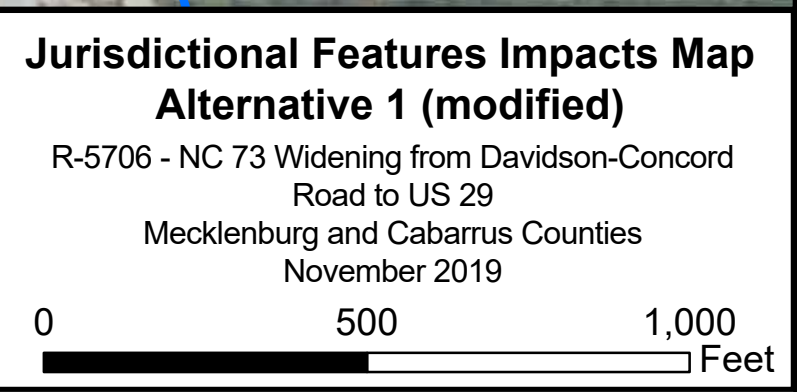
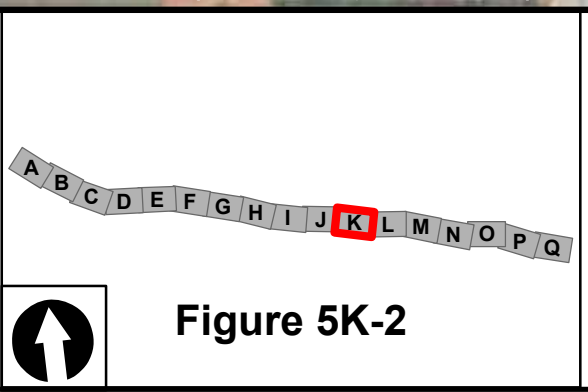
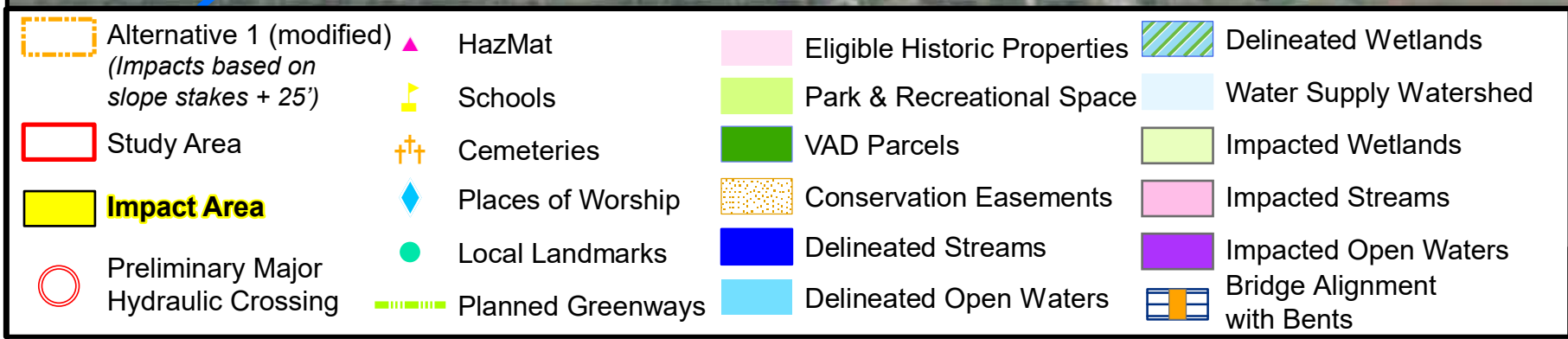
**Jurisdictional Features Impacts Map**  
**Alternative 1 (modified)**  
 R-5706 - NC 73 Widening from Davidson-Concord  
 Road to US 29  
 Mecklenburg and Cabarrus Counties  
 November 2019

0 250 500 Feet

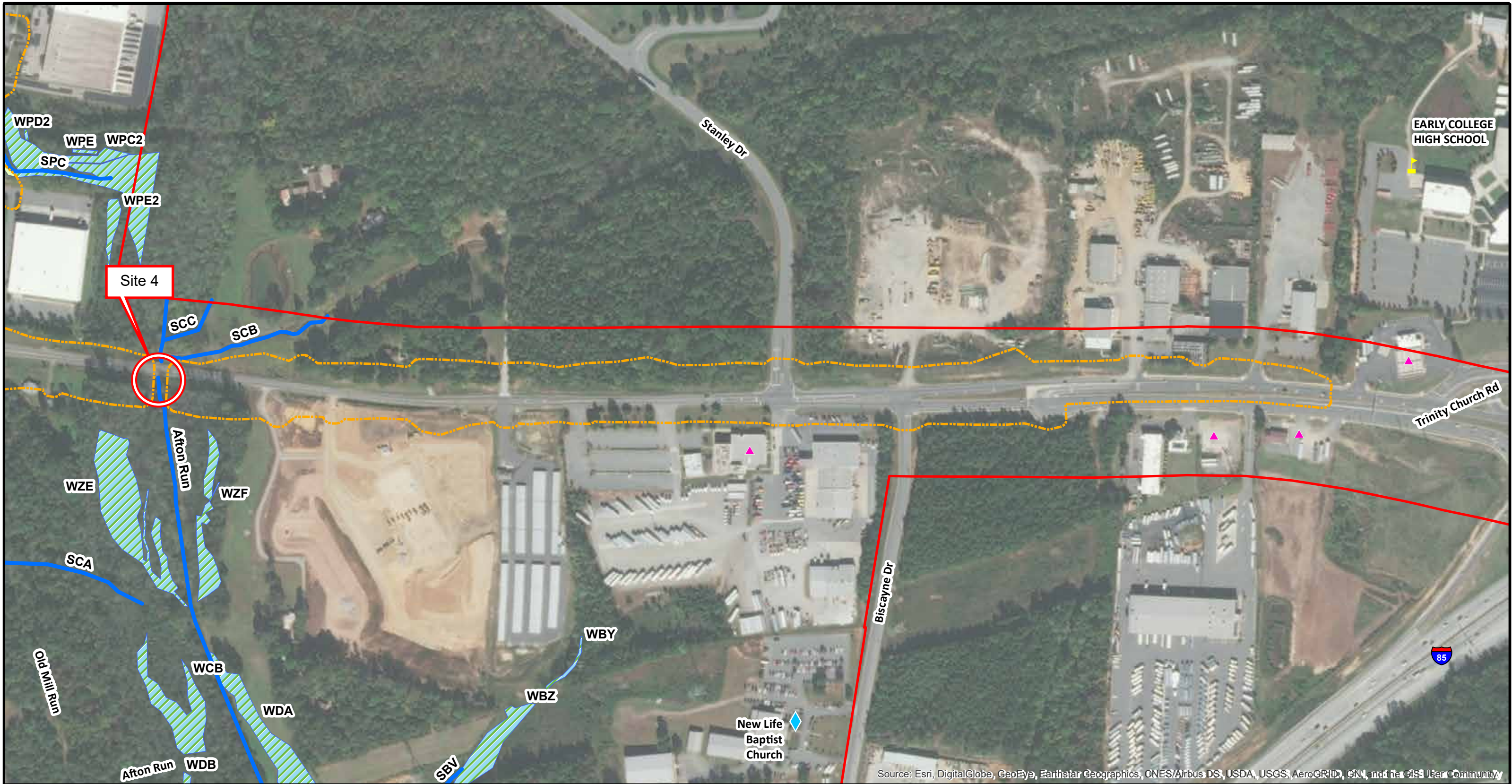




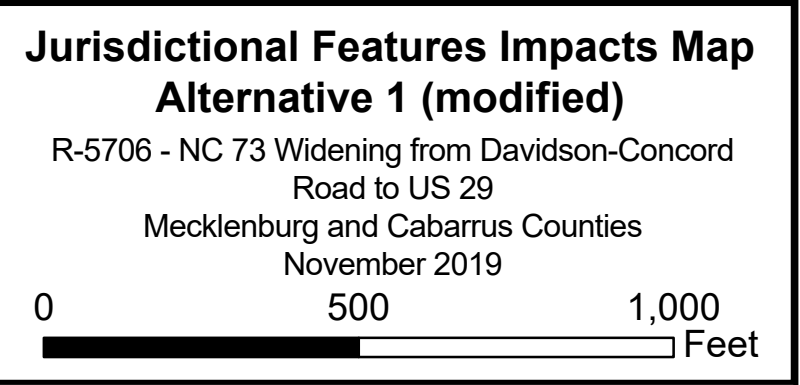
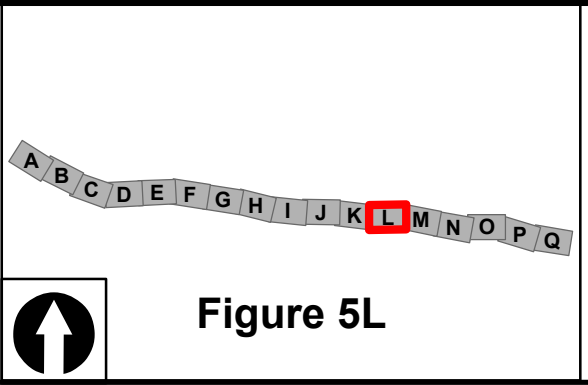
Source: Esri, DigitalGlobe, GeoEye, Earthstar Geographics, CNES/Airbus DS, USDA, USGS, AeroGRID, IGN, and the GIS User Community



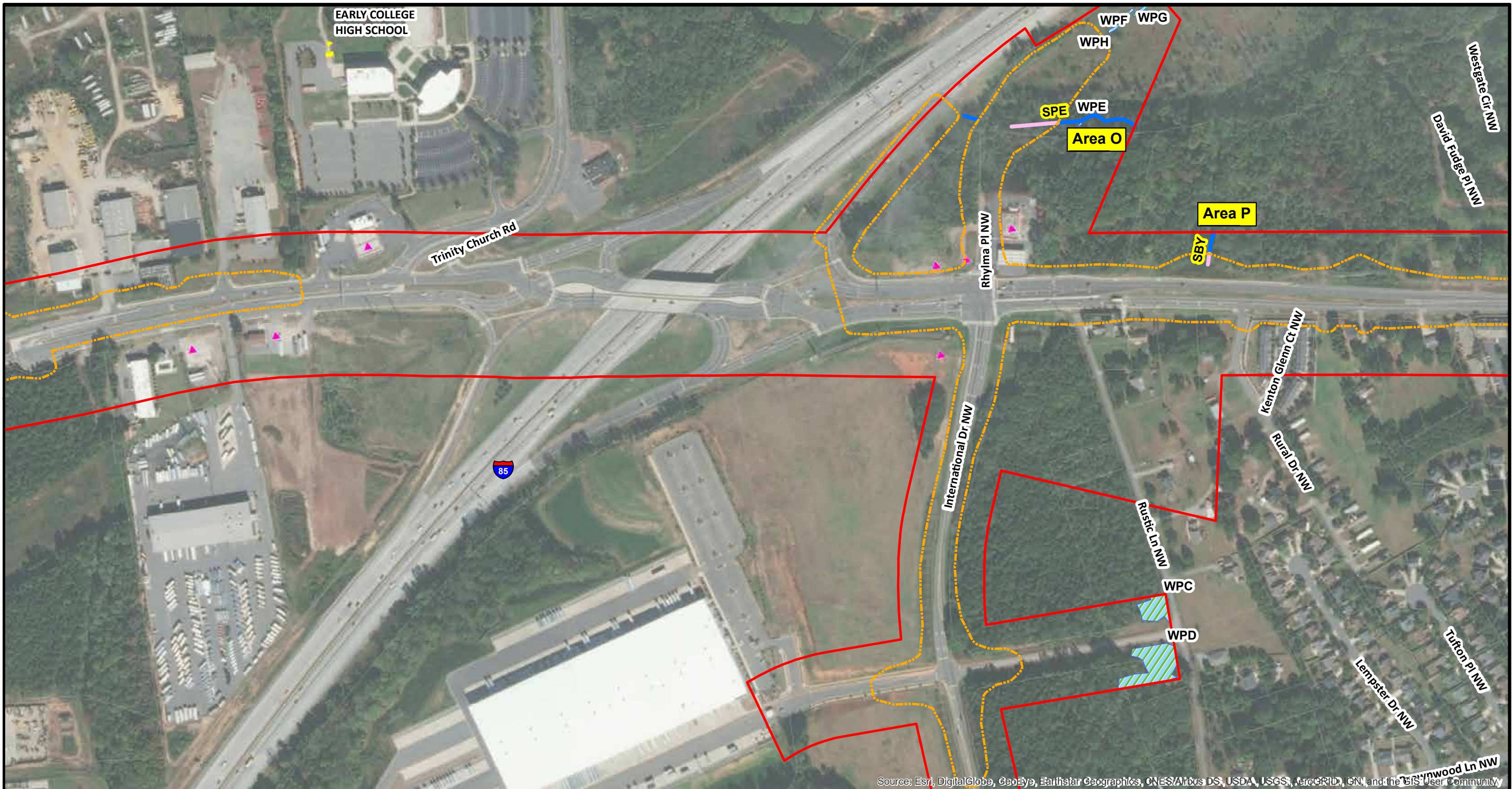




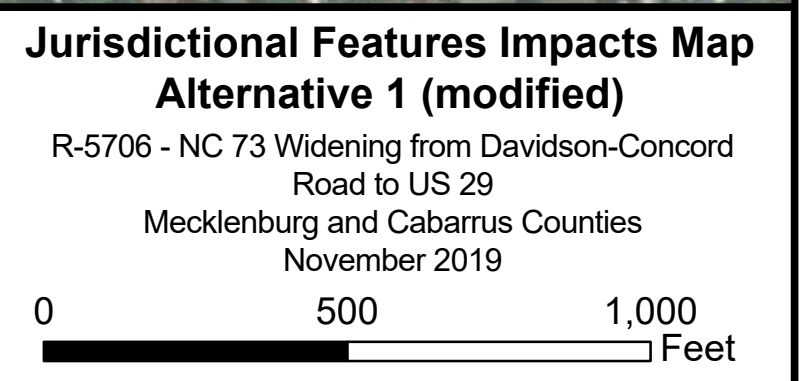
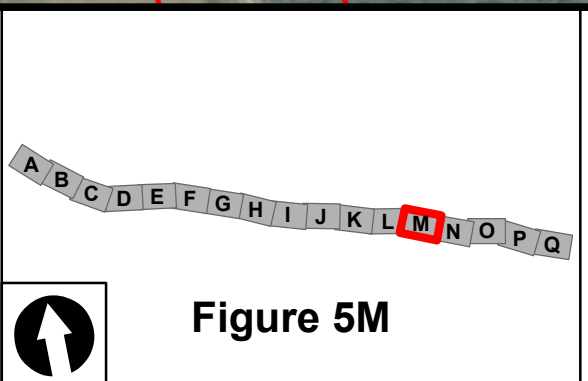
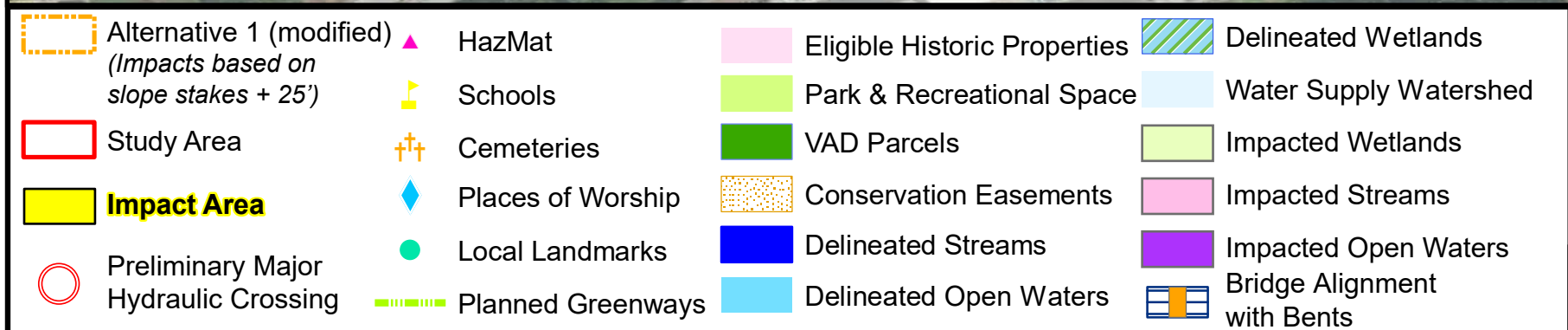
Source: Esri, DigitalGlobe, GeoEye, Earthstar Geographics, CNES/Airbus DS, USDA, USGS, AeroGRID, IGN, and the GIS User Community



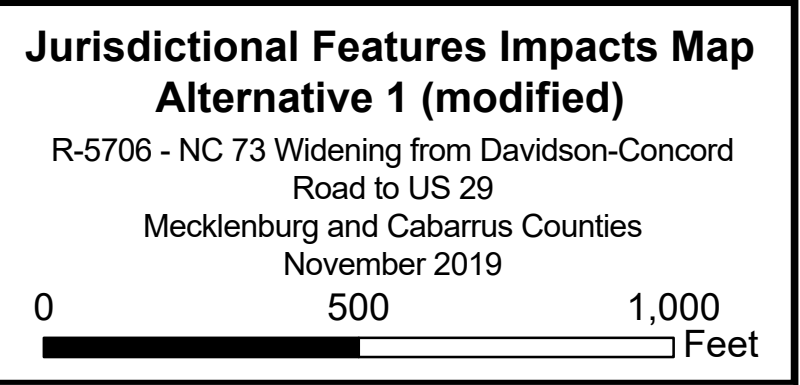
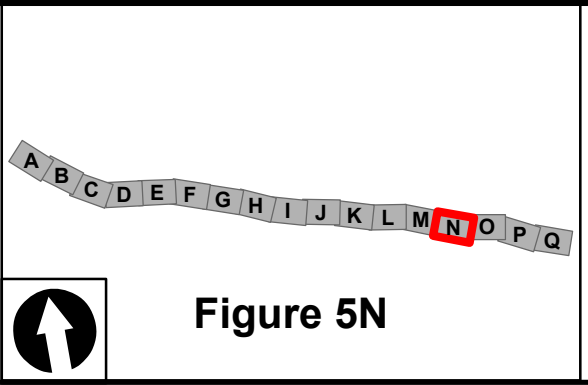
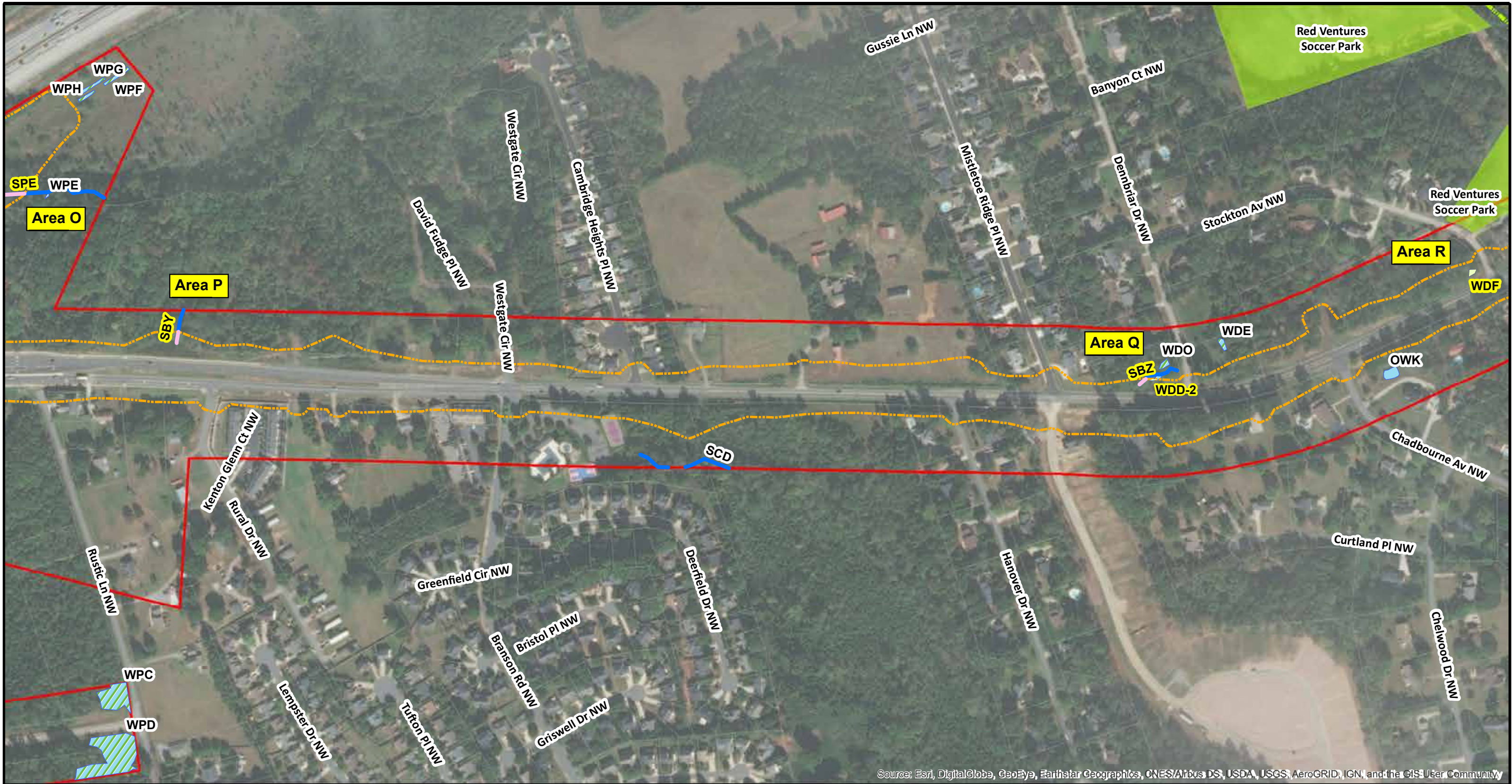




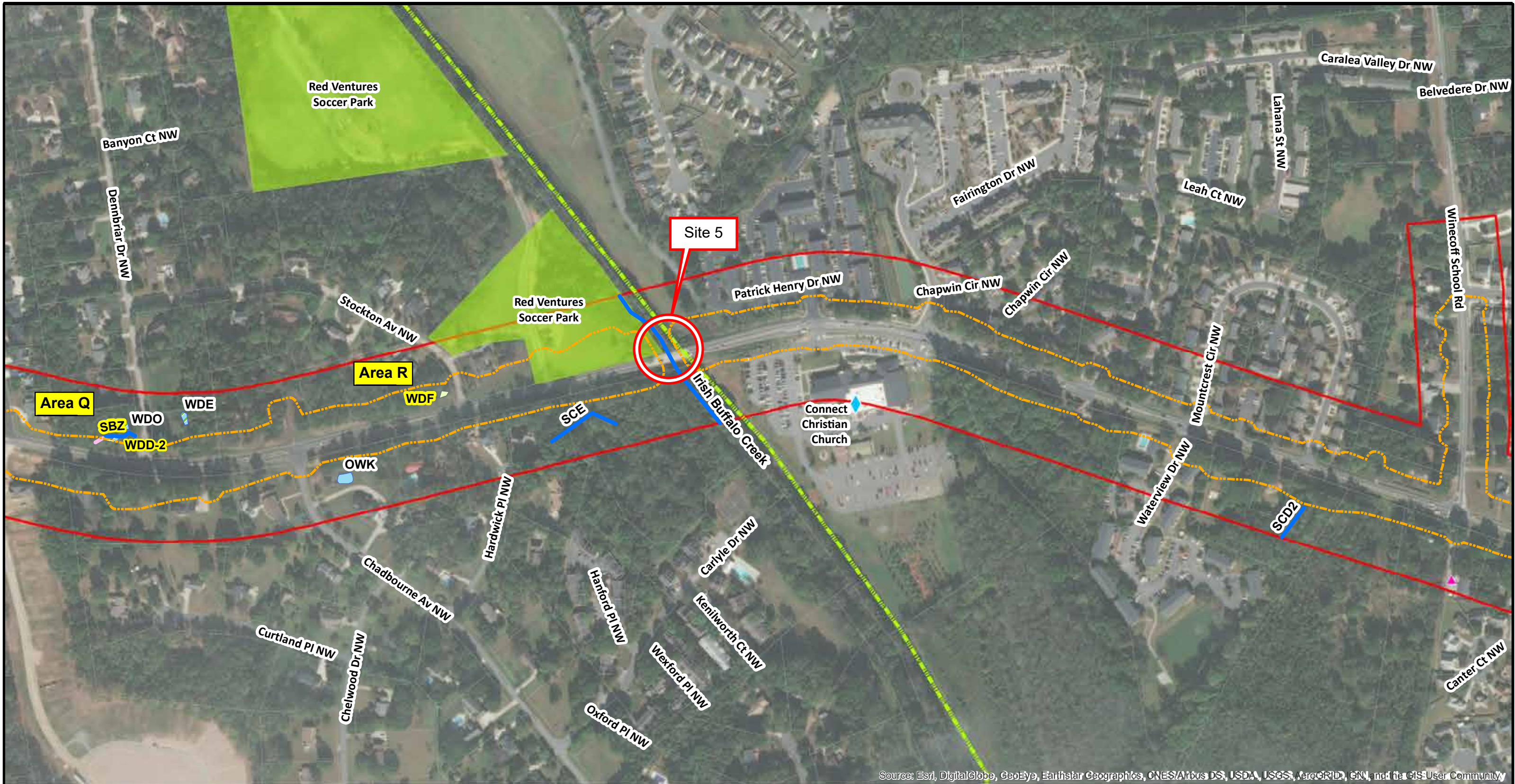
Source: Esri, DigitalGlobe, GeoEye, Earthstar Geographics, CNES/Airbus DS, USDA, USGS, AeroGRID, IGN, and the GIS User Community







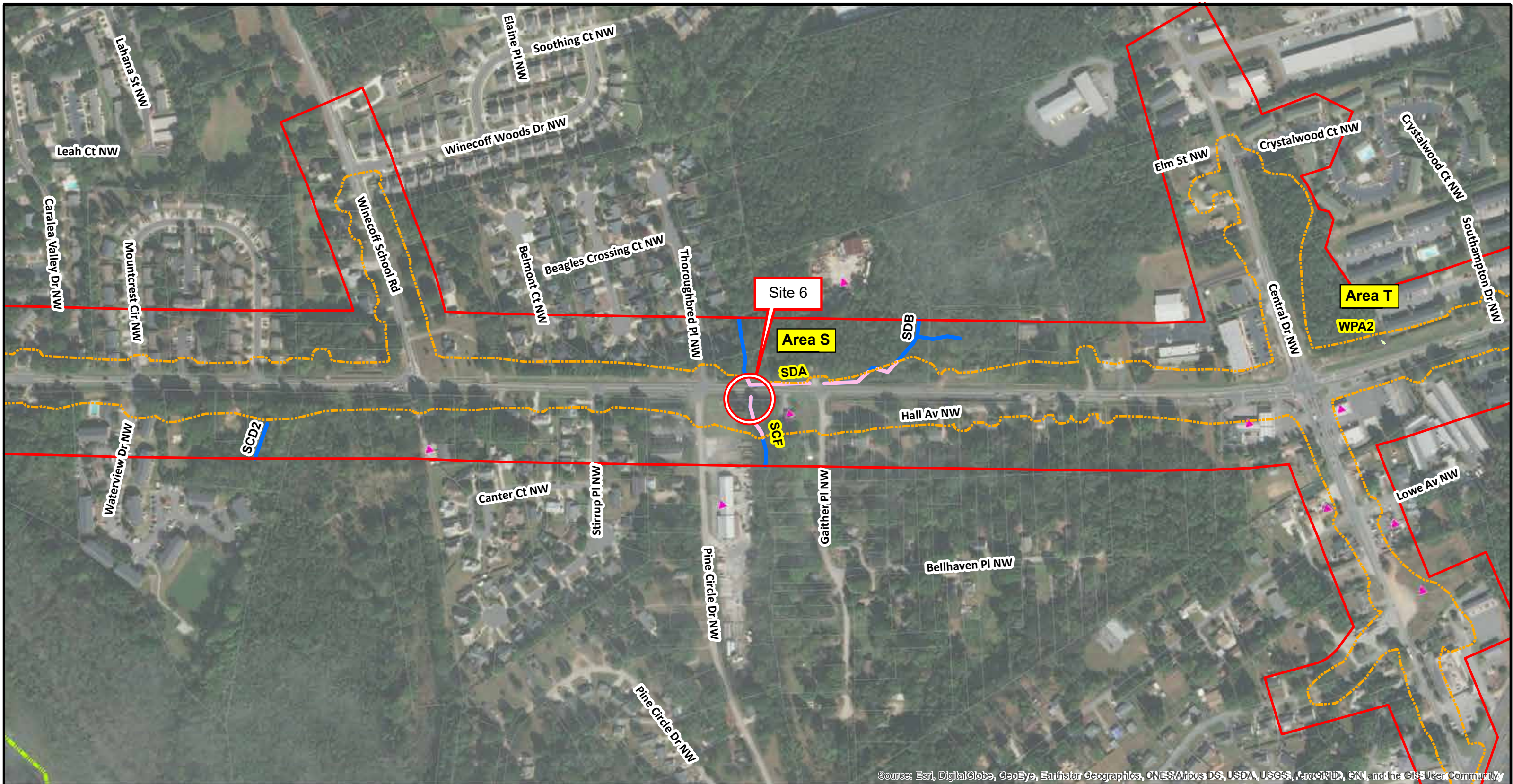




Source: Esri, DigitalGlobe, GeoEye, Earthstar Geographics, CNES/Airbus DS, USDA, USGS, AeroGRID, IGN, and the GIS User Community



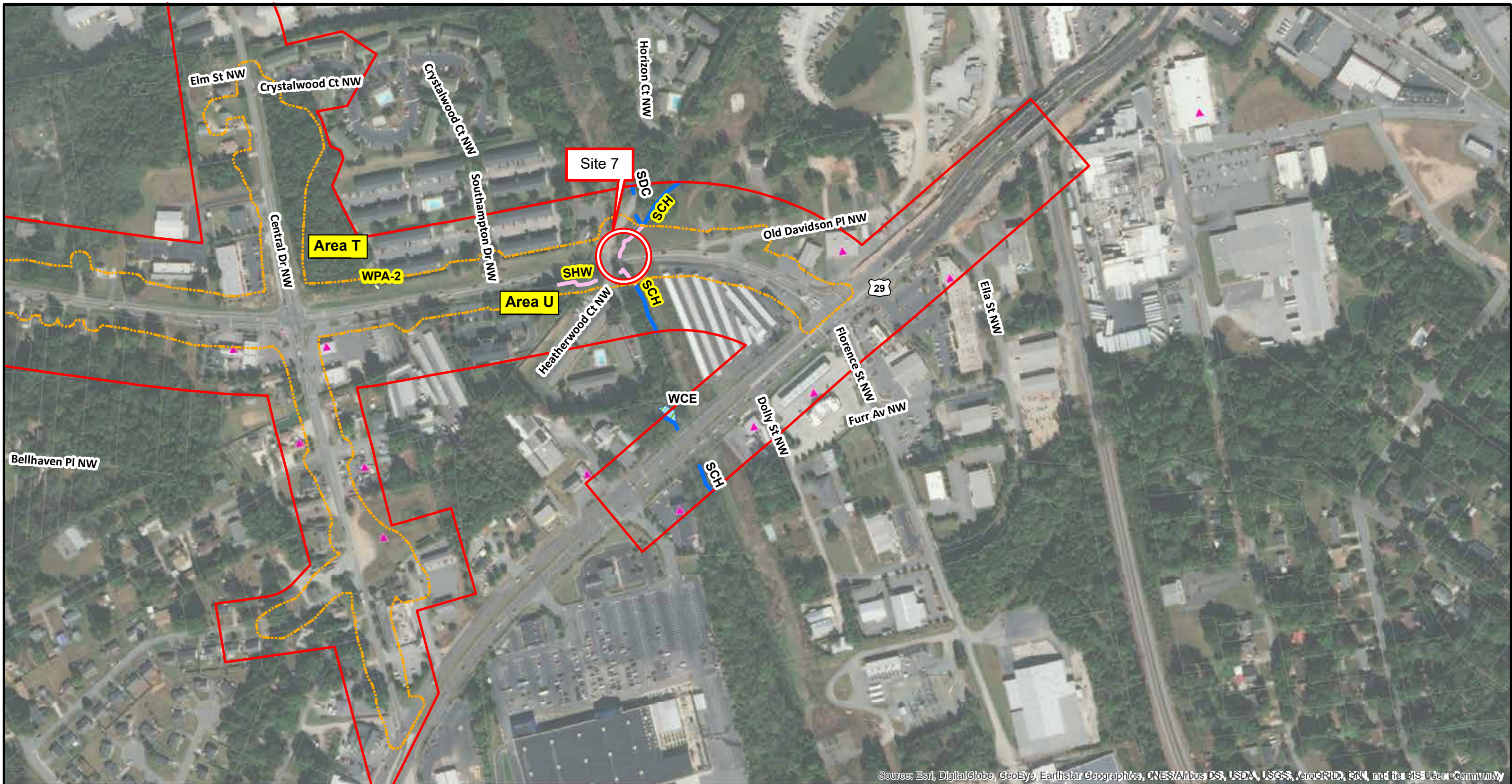




Source: Esri, DigitalGlobe, GeoEye, Earthstar Geographics, CNES/Airbus DS, USDA, USGS, AeroGRID, IGN, and the GIS User Community







Source: Esri, DigitalGlobe, GeoEye, Earthstar Geographics, CNES/Airbus DS, USDA, USGS, AeroGRID, IGN, and the GIS User Community

