



Figure 1. Project Site Location

Cape Fear Plant
1985 Basin Haul Road
Chatham County, NC

Legend

-  Project Area
-  Site Boundary

RECEIVED
FEB 12 2019
RALEIGH REGULATORY
FIELD OFFICE



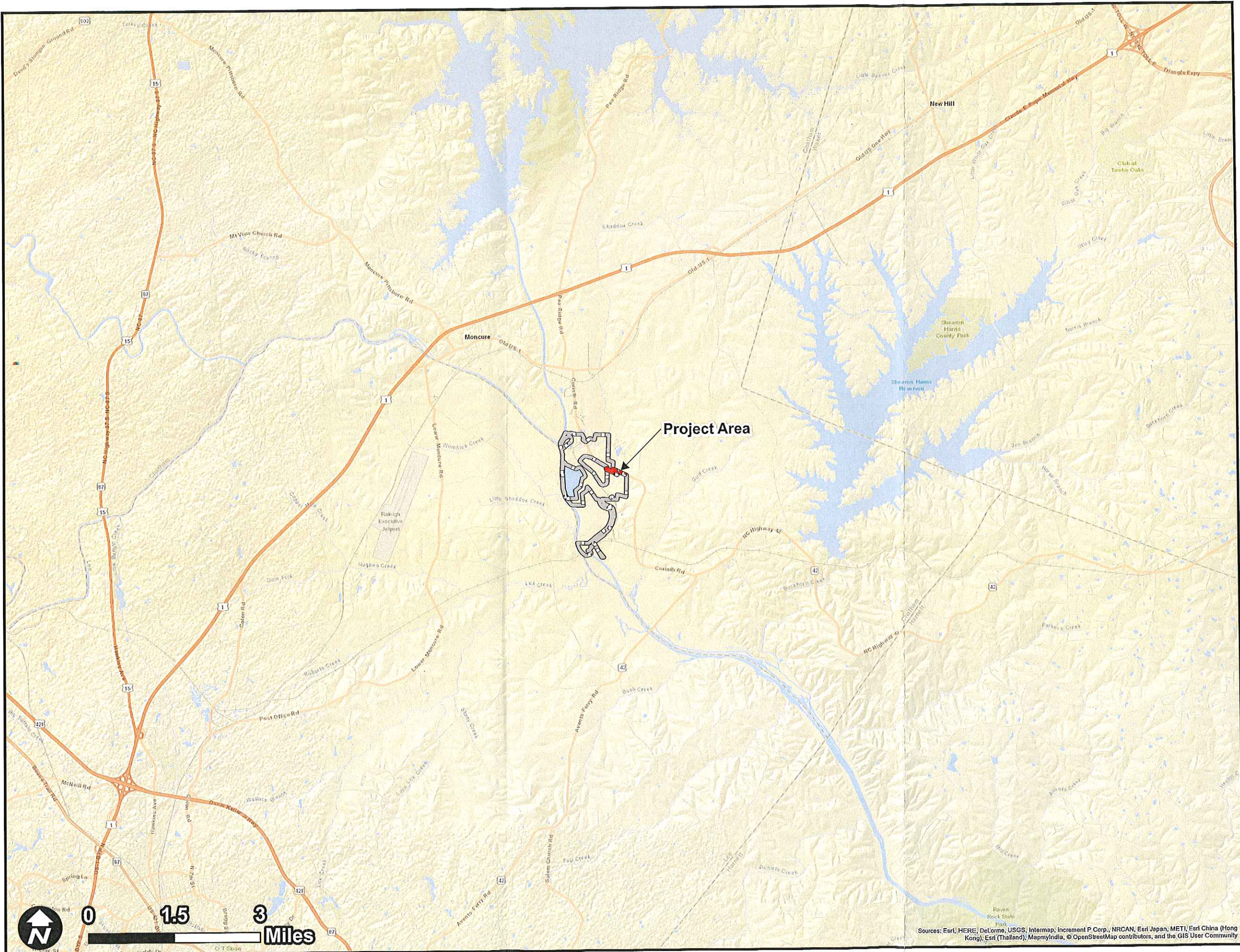
Job No. 7812180049

Drawn By: JAH

Reviewed By: ---

Date: 1/9/2019

The map shown here has been created with all due and reasonable care and is strictly for use with Amec Foster Wheeler project number 7812180049. Amec Foster Wheeler assumes no liability, direct or indirect, whatsoever for any such third party or unintended use.





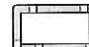
Sources: Esri, HERE, DeLorme, USGS, Intermap, Incent P Corp., NRCAN, Esri Japan, METI, Esri China (Hong Kong), Esri (Thailand), MapmyIndia, © OpenStreetMap contributors, and the GIS User Community



Figure 2. Site Aerial Map

Cape Plant
1985 Basin Haul Road
Chatham County, NC

Legend

-  Project Area
-  Ash Basin
-  Site Boundary

RECEIVED
FEB 12 2019
RALEIGH REGULATORY
FIELD OFFICE



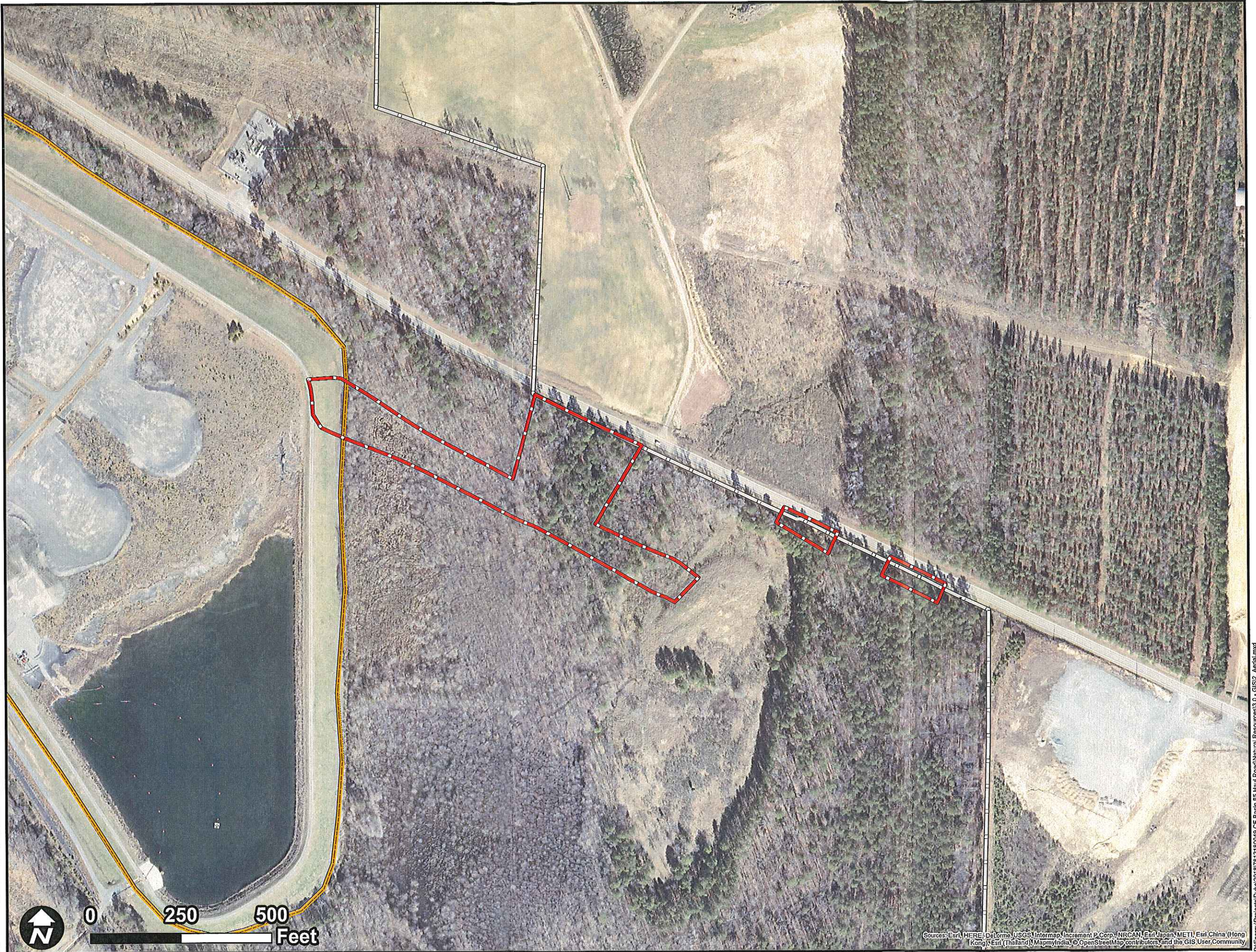
Job No. 7812180049

Drawn By: JAH

Reviewed By: ---

Date: 2/5/2019

The map shown here has been created with all due and reasonable care and is strictly for use with Wood project number 7812180049. Wood assumes no liability, direct or indirect, whatsoever for any such third party or unintended use.



Sources: Esri, HERE, DeLorme, USGS, Intermap, Increment P Corp., NRCAN, Esri Japan, METI, Esri China (Hong Kong), Esri (Thailand), MapmyIndia, © OpenStreetMap contributors, and the GIS User Community

P:\Energy\Projects\DUKE\018\1812180049 CF Basin 85 Haul Road\Natural Resources\3.0 - GIS2_Aerial.mxd

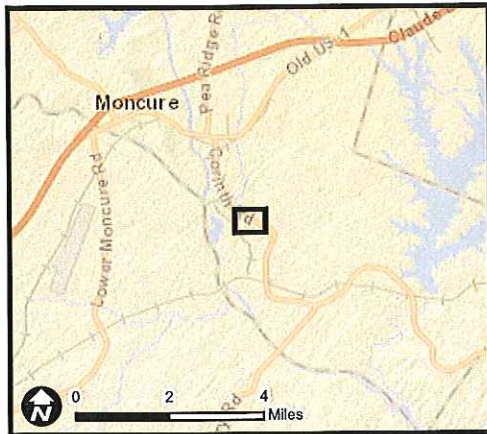






Figure 3. NRCS Soils Map

Cape Fear Plant
1985 Basin Haul Road
Chatham County, NC

Legend

-  Project Area
-  Soils
-  Ash Basin
-  Site Boundary



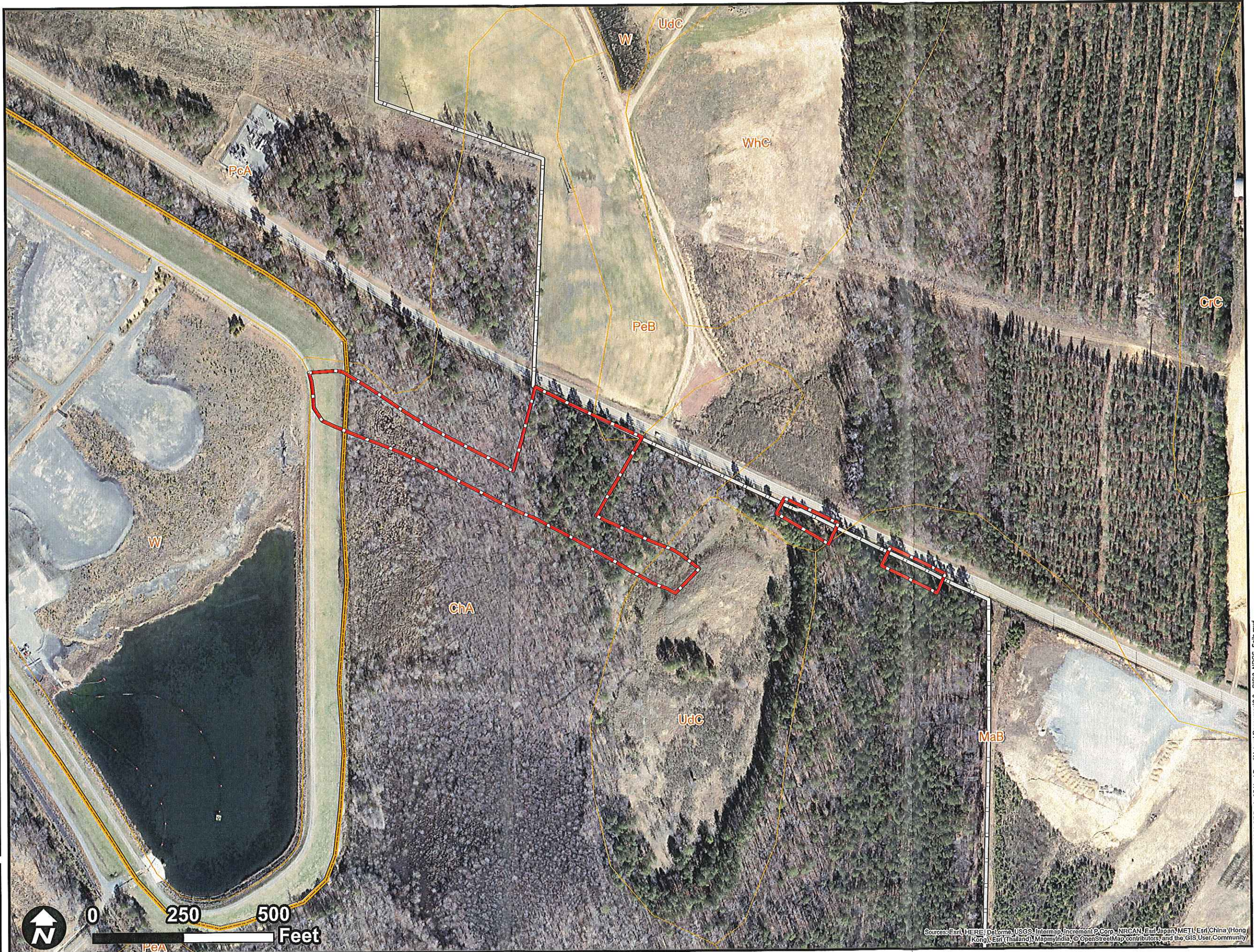
Job No. 7812180049

Drawn By: JAH

Reviewed By: ---

Date: 2/5/2019

The map shown here has been created with all due and reasonable care and is strictly for use with Wood project number 7812180049. Wood assumes no liability, direct or indirect, whatsoever for any such third party or unintended use.



Sources: Esri, HERE, DeLorme, USGS, Intermap, increment P Corp., NRCAN, Esri Japan, METI, Esri China (Hong Kong), Swisstopo, Mapbox, MapmyIndia, © OpenStreetMap contributors, and the GIS User Community

P:\Energy\Projects\2018\7812180049 CF Basin 85 Haul Road\Natural Resources\3.0 - GIS\3_NRCS_Soils.mxd



Figure 4. Jurisdictional Waters

Cape Fear Plant
1985 Basin Haul Road
Chatham County, NC

Legend

- Project Area
- Monitoring Well
- Wetlands
- Streams
- Ash Basin
- Site Boundary

RECEIVED
FEB 12 2019
RALEIGH REGULATORY
FIELD OFFICE



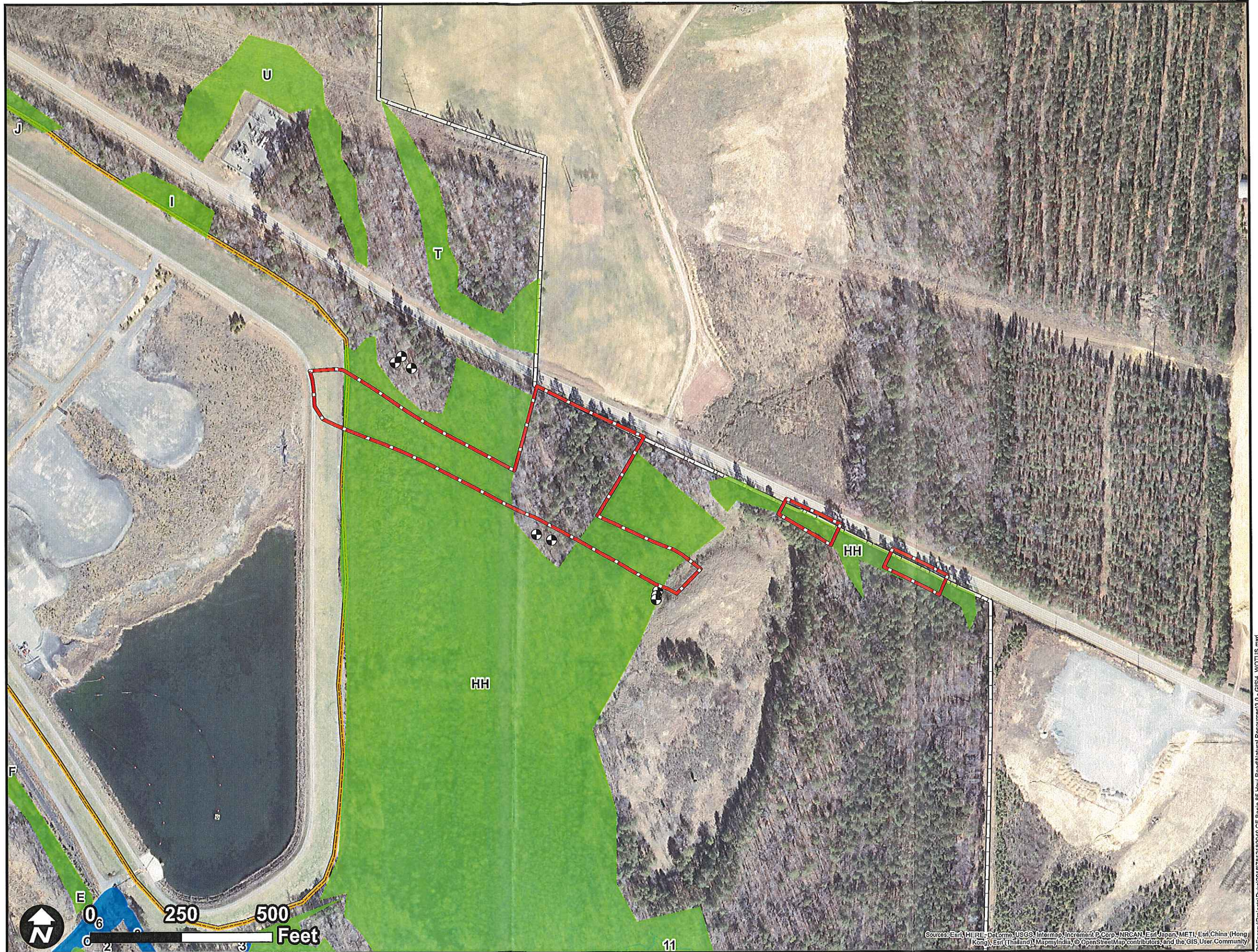
Job No. 7812180049

Drawn By: JAH

Reviewed By: ---

Date: 2/8/2019

The map shown here has been created with all due and reasonable care and is strictly for use with Wood project number 7812180049. Wood assumes no liability, direct or indirect, whatsoever for any such third party or unintended use.



Sources: Esri, HERE, DeLorme, USGS, Intermap, increment P Corp., NRCAN, Esri Japan, METI, Esri China (Hong Kong), Swisstopo, Mapbox India, Swisstopo, Mapbox India, © OpenStreetMap contributors, and the GIS User Community

P:\Energy\Projects\Duke\2018\7812180049 CF Basin 85 Haul Road\Natural Resources\3.0 - GIS\4_WOTUS.mxd

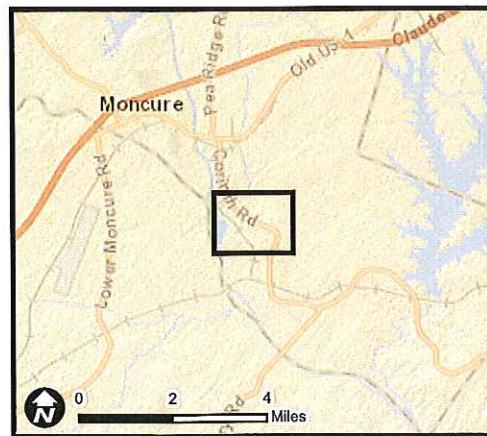


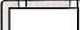


Figure 5. USGS Topographic Map

Cape Fear Plant
1985 Basin Haul Road
Chatham County, NC

Legend

-  Project Area
-  Ash Basin
-  Site Boundary



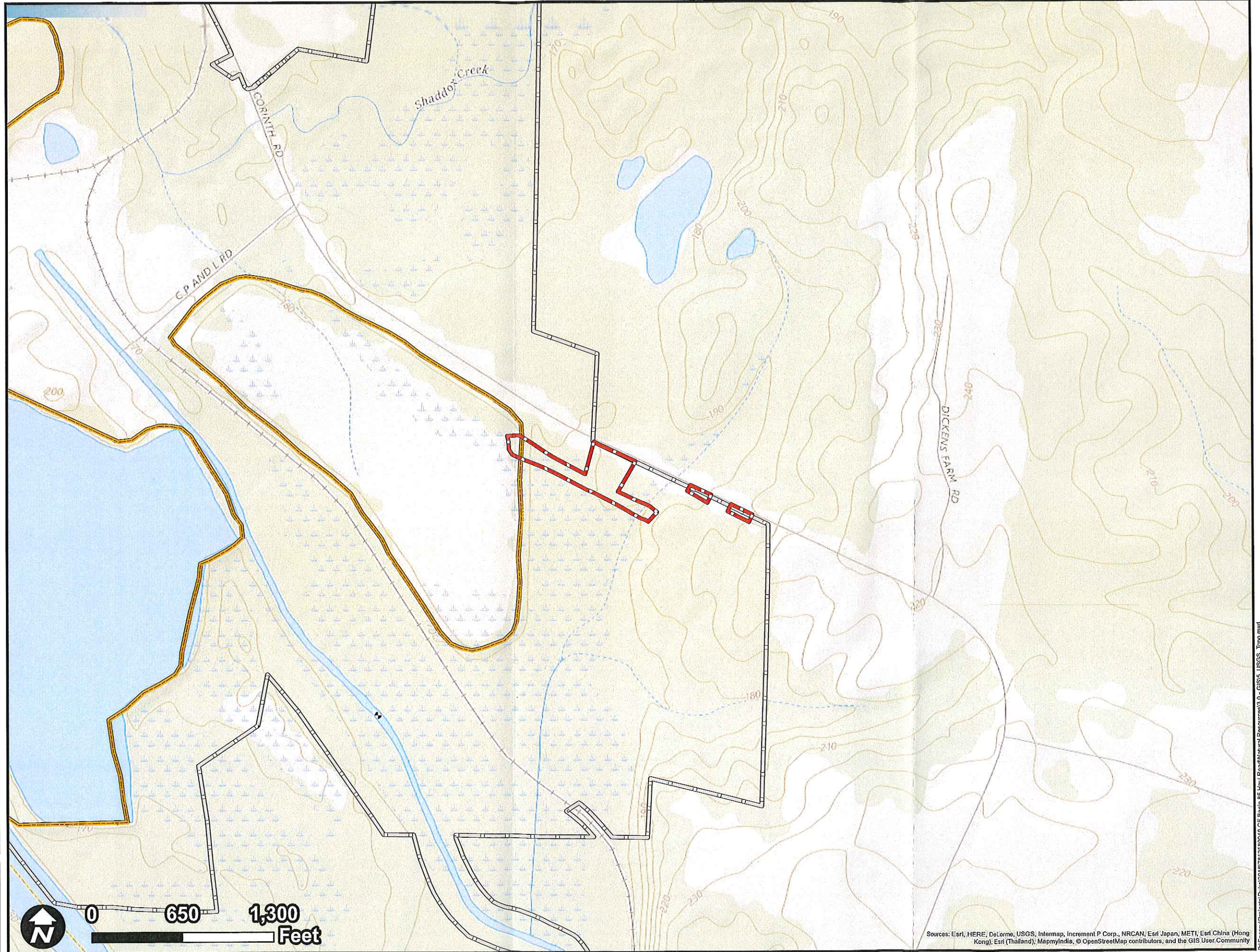
Job No. 7812180049

Drawn By: JAH

Reviewed By: ---

Date: 2/5/2019

The map shown here has been created with all due and reasonable care and is strictly for use with Wood project number 7812180049. Wood assumes no liability, direct or indirect, whatsoever for any such third party or unintended use.



Sources: Esri, HERE, DeLorme, USGS, Intermap, increment P Corp., NRCAN, Esri Japan, METI, Esri China (Hong Kong), Esri (Thailand), MapmyIndia, © OpenStreetMap contributors, and the GIS User Community

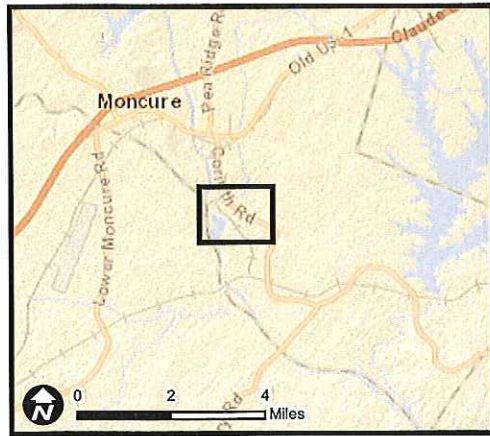
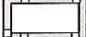




Figure 6. Floodplain Map

Cape Fear Plant
1985 Basin Haul Road
Chatham County, NC

Legend

-  Project Area
-  Ash Basin
-  Site Boundary
-  Zone AE
-  Zone X (500yr)

RECEIVED
FEB 12 2019
RALEIGH REGULATORY
FIELD OFFICE



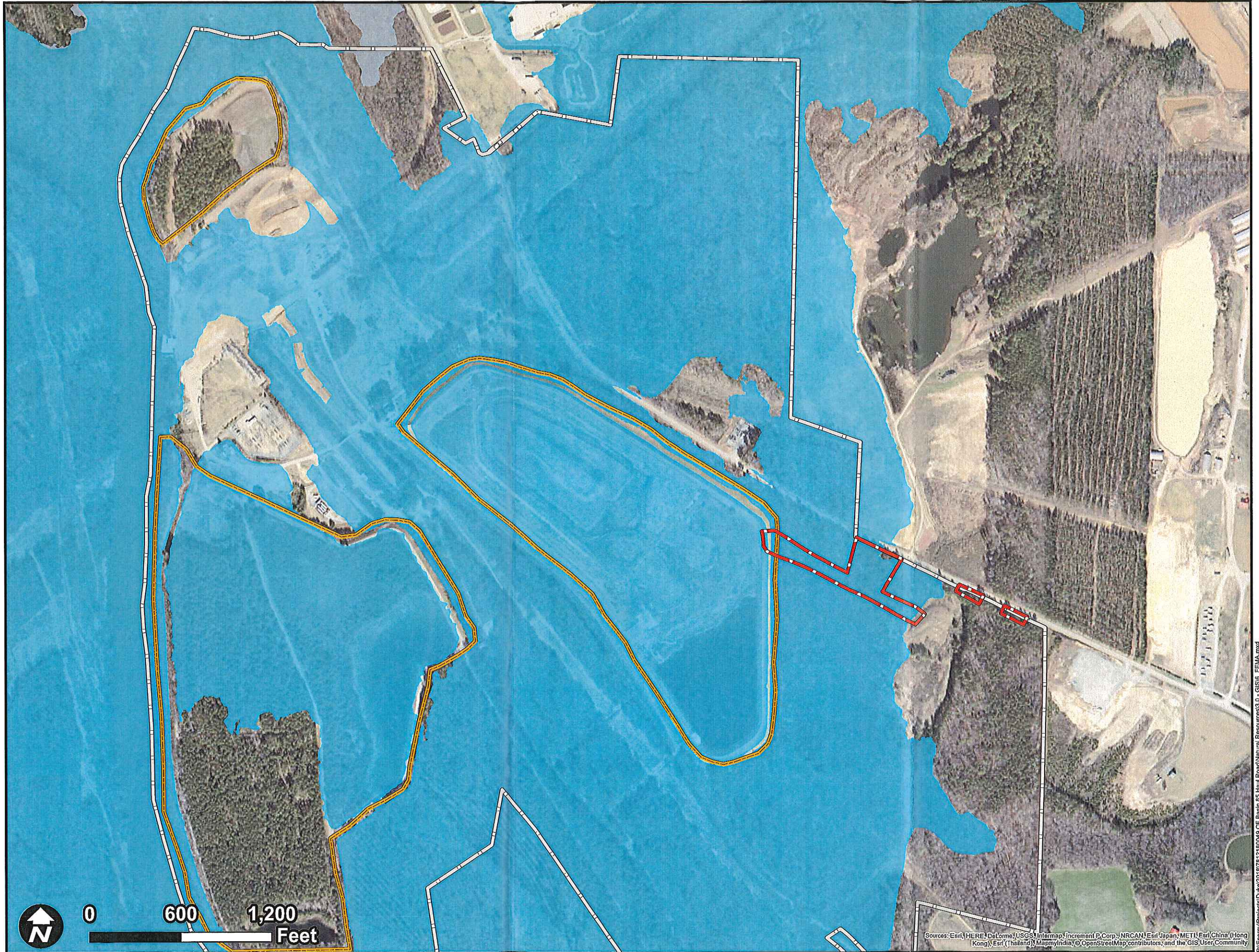
Job No. 7812180049

Drawn By: JAH

Reviewed By: ---

Date: 2/5/2019

The map shown here has been created with all due and reasonable care and is strictly for use with Wood project number 7812180049. Wood assumes no liability, direct or indirect, whatsoever for any such third party or unintended use.



Sources: Esri, HERE, DeLorme, USGS, Intermap, increment P Corp., NRCAN, Esri Japan, METI, Esri China (Hong Kong), Esri (Thailand), Swisstopo, Mapbox India, © OpenStreetMap contributors, and the GIS User Community

P:\Energy\Projects\Duke\2019\7812180049 OF Basin 65 Haul Road\Natural Resources\3.0 - GIS\6_FEMA.mxd



Figure 7. Wetland Impacts

Cape Fear Plant
1985 Basin Haul Road
Chatham County, NC

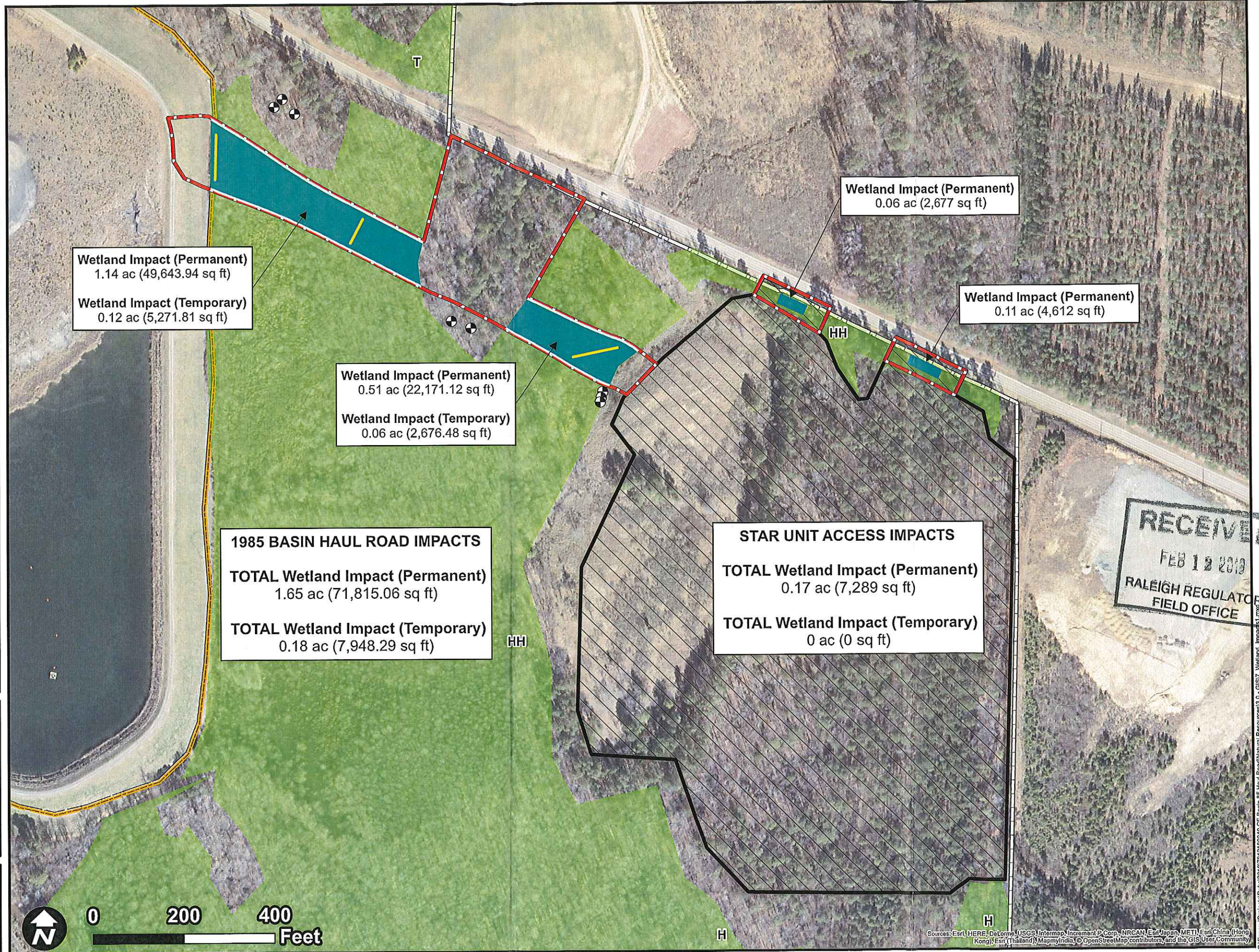
Legend

- Monitoring Well
- Culvert Location
- Wetland Impact (Permanent)
- Wetland Impact (Temporary)
- Project Area
- Star Unit (ESC LOD)
- Wetlands
- Ash Basin
- Site Boundary

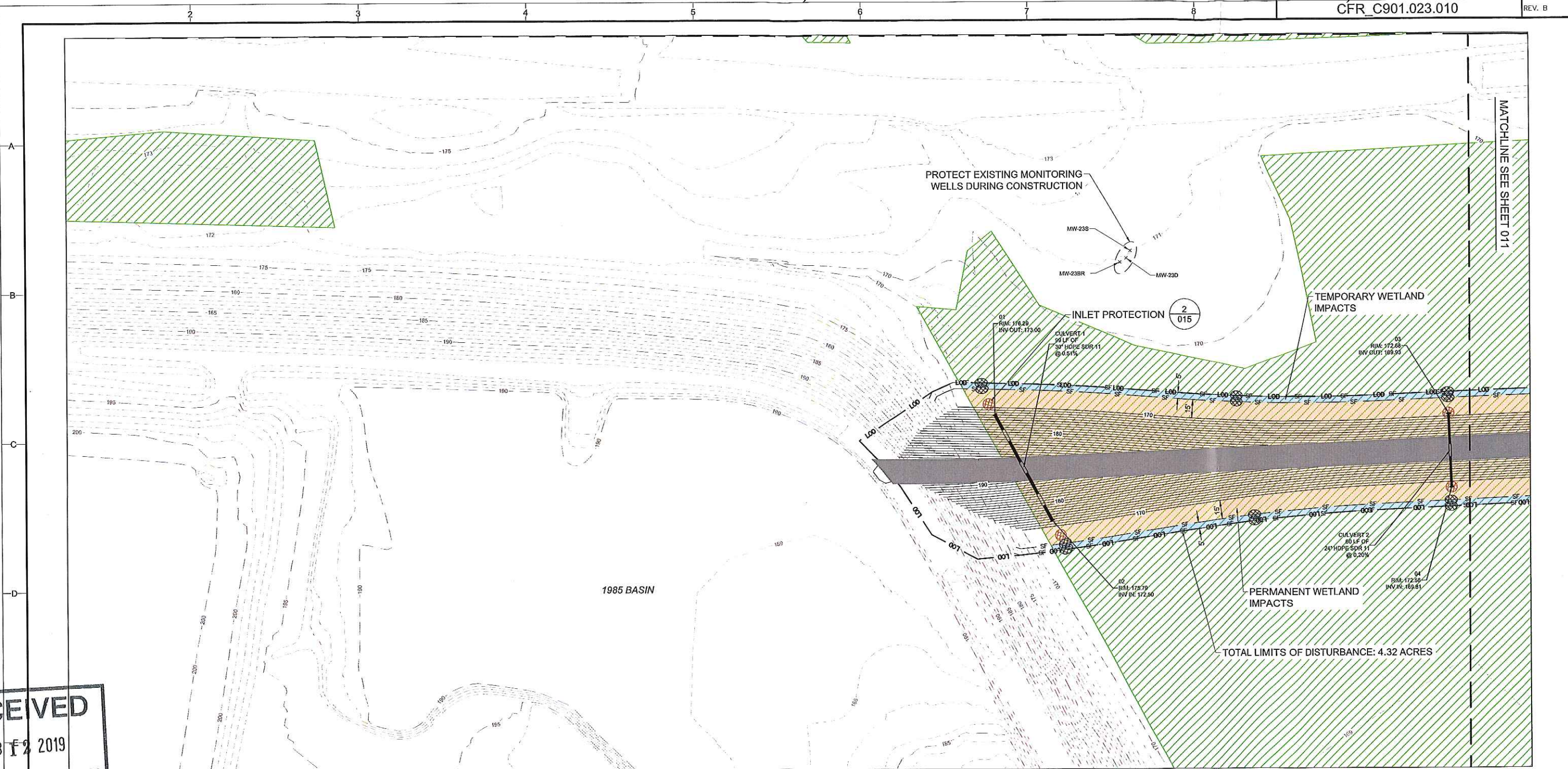


Job No. 7812180049
 Drawn By: JAH
 Reviewed By: ---
 Date: 2/7/2019

The map shown here has been created with all due and reasonable care and is strictly for use with Wood project number 7812180049. Wood assumes no liability, direct or indirect, whatsoever for any such third party or unintended use.



Sources: Esri, HERE, DeLorme, USGS, Intermap, Incorp, P Corp, NRCAN, Esri Japan, METI, Esri China (Hong Kong), Swisstopo, MapmyIndia, © OpenStreetMap contributors, and the GIS User Community



EROSION AND SEDIMENT CONTROL PLAN PHASE II INSET A
SCALE: 1" = 40'



RECEIVED
FEB 12 2019
RALEIGH REGULATORY
FIELD OFFICE

LEGEND	
--- EXISTING MAJOR CONTOURS	--- PROPOSED ALIGNMENT
--- EXISTING MINOR CONTOURS	--- L00 L00 LIMITS OF DISTURBANCE
--- WOOD LINE	--- SF SF SILT FENCE
--- FENCE LINE	--- CONSTRUCTION ENTRANCE
--- WATER SURFACE	--- SILT FENCE OUTLET
--- DITCH LINE	--- INLET PROTECTION
--- PAVED PATH	--- TEMPORARY IMPACTS
--- UNPAVED PATH	--- PERMANENT IMPACTS
--- WETLANDS	
--- ASH BASIN BOUNDARY	
--- ZONE AE FLOODPLAIN LIMIT	
--- 100YR FP	
xMW-24S	--- EXISTING MONITORING WELL

- PHASE II:**
1. INSTALL ADDITIONAL SILT FENCE AROUND STOCKPILE/LAYDOWN AREAS AS INDICATED ON THE DRAWINGS.
 2. INSTALL INLET PROTECTION ON CULVERTS 1, 2, & 3 AS INDICATED ON THE DRAWINGS.
 3. GRADE PROPOSED HAUL ROAD AS INDICATED ON THE DRAWINGS.
 - 4.
- NOTES:**
1. TOTAL LIMITS OF DISTURBANCE: 4.32 ACRES
 2. TOTAL PERMANENT WETLAND IMPACTS: 1.65 ACRES
 3. TOTAL TEMPORARY WETLAND IMPACTS: 0.18 ACRES

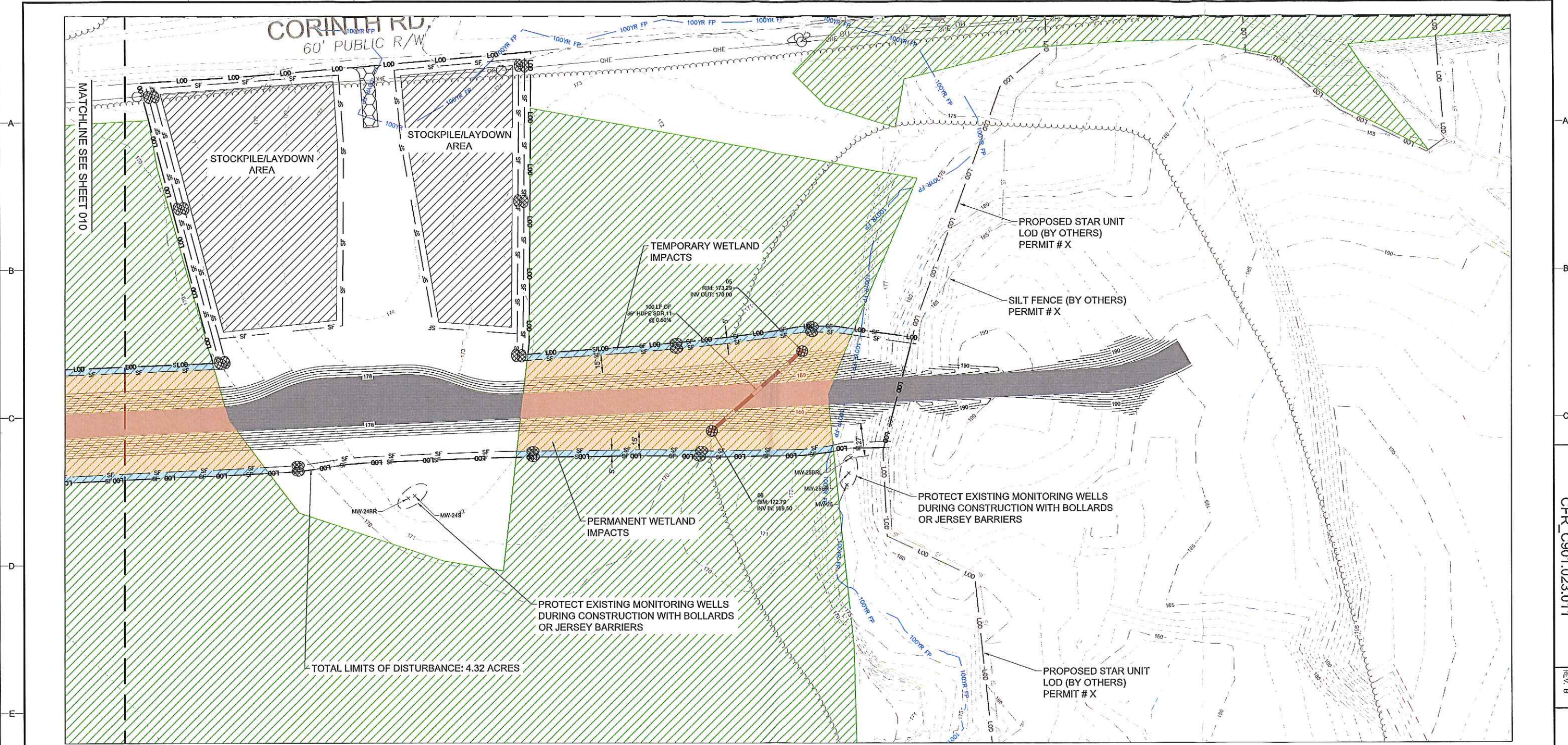
wood.
Environment & Infrastructure Solutions
4021 STIRRUP CREEK DRIVE, SUITE 100 DURHAM, NC 27703
TEL: (919) 381-9900
FAX: (919) 381-9901
LICENSE: NC ENG-F-1283
NC GEOLOGY: C-247

SEAL

NOT FOR CONSTRUCTION

TITLE CAPE FEAR CCP 1985 BASIN HAUL ROAD DESIGN PLAN CAPE FEAR STEAM STATION CHATHAM COUNTY, NORTH CAROLINA			
EROSION AND SEDIMENT CONTROL PLAN PHASE II INSET A			
FOR ISSUED FOR REVIEW - 100%			
SCALE: AS SHOWN DWG TYPE: DWG JOB NO: 7812180049 DATE: 02/08/2019	DES: JL DFT: VDS CHKD: DS ENGR: CK		
FILENAME: 010 EROSION AND SEDIMENT CONTROL PLAN PHASE II INSET A.DWG		APPD: CK	
DWG SIZE: ANSI D 22"x34"		DRAWING NO. CFR_C901.023.010	
		REVISION B	

REV	DATE	JOB NO.	PROJECT TYPE	DES	DFT	CHKD	ENGR	APPD	DESCRIPTION
B	02/08/2019	7812180049	DESIGN PLAN	JL	VDS	DS	CK	CK	ISSUED FOR REVIEW - 100%
A	01/04/2019	7812180049	DESIGN PLAN	JL	VDS	DS	CK	CK	ISSUED FOR REVIEW - 90%



EROSION AND SEDIMENT CONTROL PLAN PHASE II INSET B

SCALE: 1" = 40'



LEGEND	
--- EXISTING MAJOR CONTOURS	--- PROPOSED ALIGNMENT
--- EXISTING MINOR CONTOURS	--- L00 --- L00 --- LIMITS OF DISTURBANCE
--- WOOD LINE	--- SF --- SF --- SILT FENCE
--- FENCE LINE	--- CONSTRUCTION ENTRANCE
--- WATER SURFACE	--- SILT FENCE OUTLET
--- DITCH LINE	--- INLET PROTECTION
--- PAVED PATH	--- TEMPORARY IMPACTS
--- UNPAVED PATH	--- PERMANENT IMPACTS
--- WETLANDS	--- STOCKPILE/LAYDOWN AREA
--- ASH BASIN BOUNDARY	
--- ZONE AE FLOODPLAIN LIMIT	
--- EXISTING MONITORING WELL	

- PHASE II:**
1. INSTALL ADDITIONAL SILT FENCE AROUND STOCKPILE/LAYDOWN AREAS AS INDICATED ON THE DRAWINGS.
 2. INSTALL INLET PROTECTION ON CULVERTS 1, 2, & 3 AS INDICATED ON THE DRAWINGS.
 3. GRADE PROPOSED HAUL ROAD AS INDICATED ON THE DRAWINGS.
 - 4.

- NOTES:**
1. TOTAL LIMITS OF DISTURBANCE: 4.32 ACRES
 2. TOTAL PERMANENT WETLAND IMPACTS: 1.65 ACRES
 3. TOTAL TEMPORARY WETLAND IMPACTS: 0.18 ACRES

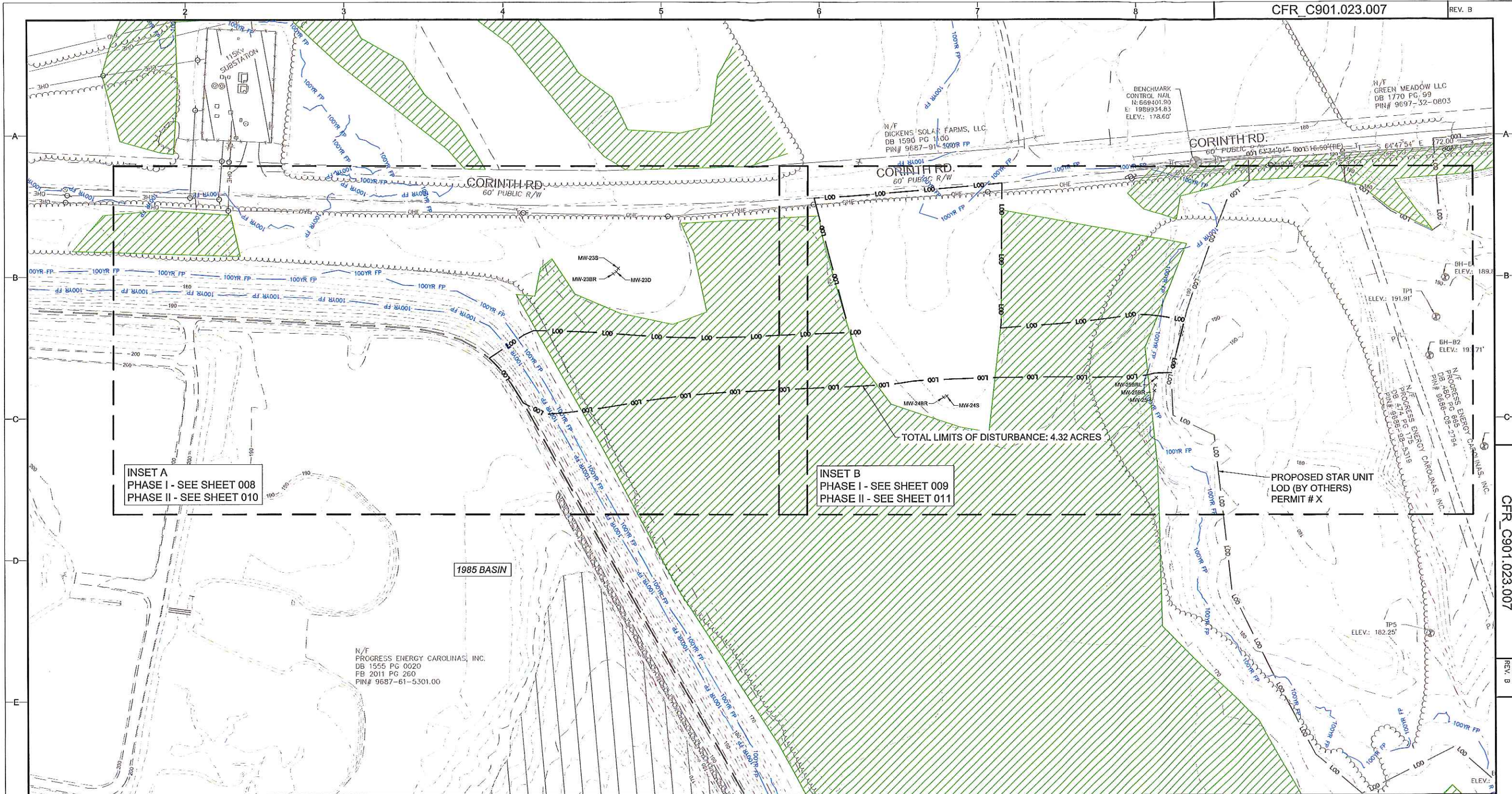
wood.
 Environment & Infrastructure Solutions
 4021 STIRRUP CREEK DRIVE, SUITE 100 DURHAM, NC 27703
 TEL: (919) 381-9900 FAX: (919) 381-9901
 LICENSE: NC ENG. P-1253 NC GEOLOGY C-247

SEAL

NOT FOR CONSTRUCTION

TITLE CAPE FEAR CCP 1985 BASIN HAUL ROAD DESIGN PLAN CAPE FEAR STEAM STATION CHATHAM COUNTY, NORTH CAROLINA	
EROSION AND SEDIMENT CONTROL PLAN PHASE II INSET B FOR ISSUED FOR REVIEW - 100%	
SCALE: AS SHOWN DWG TYPE: DWG JOB NO: 7812180049 DATE: 02/08/2019	DES: JL DFT: VDS CHKD: DS ENGR: CK APPD: CK
FILENAME: 011 EROSION AND SEDIMENT CONTROL PLAN PHASE II INSET B.DWG DWG SIZE: 22"x34"	DRAWING NO. CFR_C901.023.011 REVISION: B

REV	DATE	JOB NO.	PROJECT TYPE	DES	DFT	CHKD	ENGR	APPD	DESCRIPTION
B	02/08/2019	7812180049	DESIGN PLAN	JL	VDS	DS	CK	CK	ISSUED FOR REVIEW - 100%
A	01/04/2019	7812180049	DESIGN PLAN	JL	VDS	DS	CK	CK	ISSUED FOR REVIEW - 90%



INSET A
PHASE I - SEE SHEET 008
PHASE II - SEE SHEET 010

INSET B
PHASE I - SEE SHEET 009
PHASE II - SEE SHEET 011

TOTAL LIMITS OF DISTURBANCE: 4.32 ACRES

PROPOSED STAR UNIT
LOD (BY OTHERS)
PERMIT # X

LEGEND

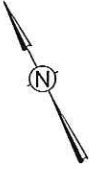
- EXISTING MAJOR CONTOURS
- EXISTING MINOR CONTOURS
- WOOD LINE
- FENCE LINE
- WATER SURFACE
- DITCH LINE
- PAVED PATH
- UNPAVED PATH
- WETLANDS
- ASH BASIN BOUNDARY
- 100YR FP
- ZONE AE FLOODPLAIN LIMIT
- XMW-248
- L00

NOTES:

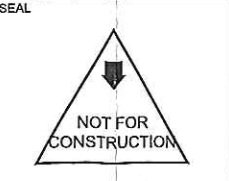
1. TOTAL LIMITS OF DISTURBANCE: 4.32 ACRES
2. TOTAL PERMANENT WETLAND IMPACTS: 1.65 ACRES
3. TOTAL TEMPORARY WETLAND IMPACTS: 0.18 ACRES

OVERALL EROSION AND SEDIMENT CONTROL PLAN

SCALE: 1" = 80'



Environment & Infrastructure Solutions
4021 STURUP CREEK DRIVE, SUITE 100 DURHAM
NC 27703
TEL: (919) 261-9999
FAX: (919) 261-9901
LICENSURE:
NC ENG. # 1263
NC GEOLOGY: C-247



TITLE
CAPE FEAR CCP 1985 BASIN HAUL ROAD DESIGN PLAN
CAPE FEAR STEAM STATION
CHATHAM COUNTY, NORTH CAROLINA

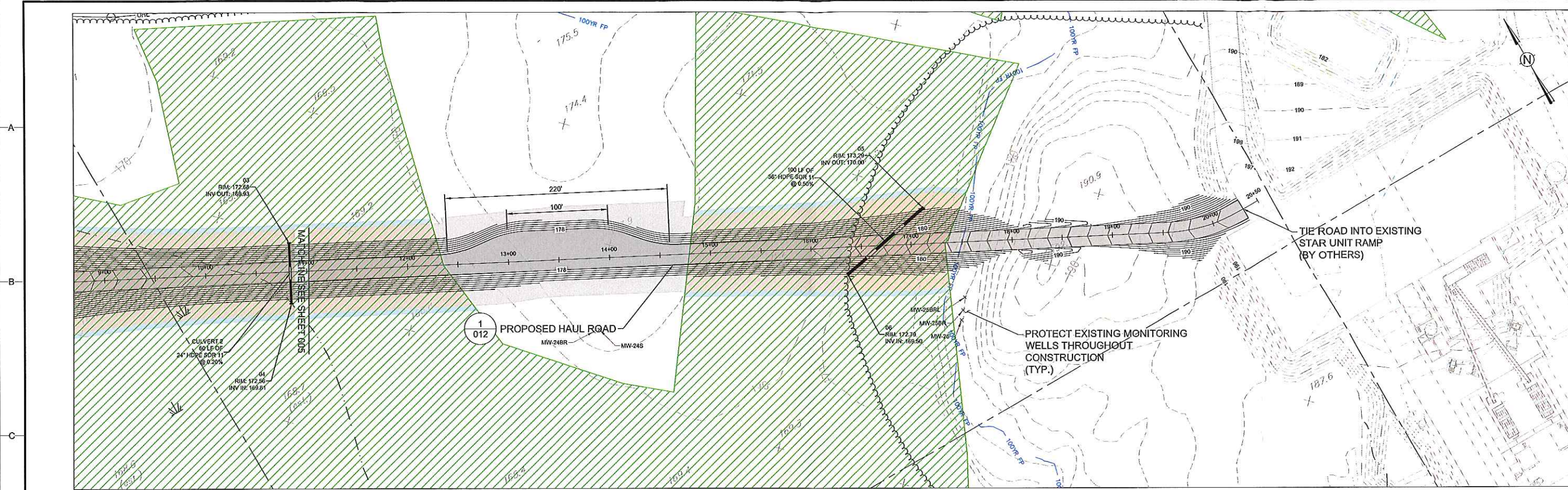
OVERALL EROSION AND SEDIMENT CONTROL PLAN

FOR ISSUED FOR REVIEW - 100%

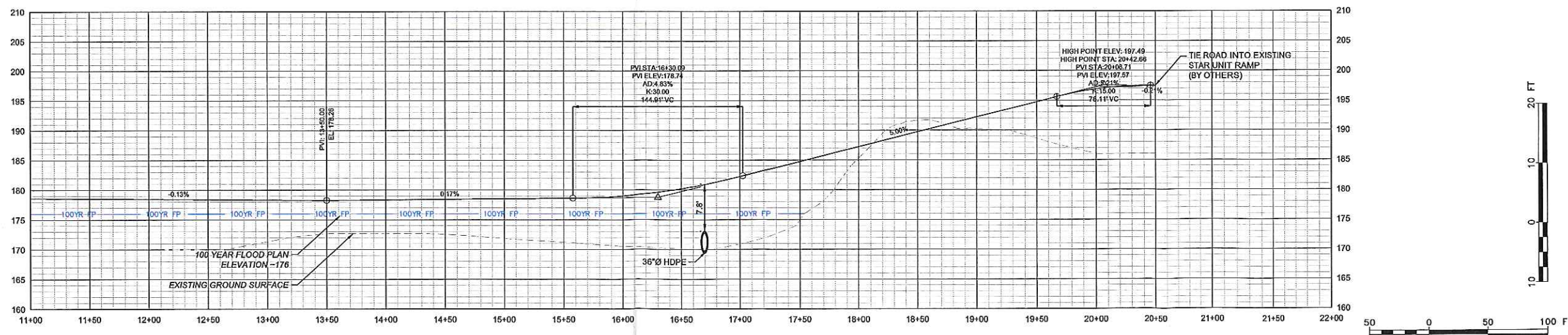
SCALE:	AS SHOWN	DES:	JL
DWG TYPE:	DWG	DFT:	VDS
JOB NO:	7812180049	CHKD:	DS
DATE:	02/08/2019	ENGR:	CK
APPD:	CK		

FILENAME:	007 OVERALL EROSION AND SEDIMENT CONTROL PLAN.DWG	REVISION	
DWG SIZE:	ANSI D 22"x34"	DRAWING NO.	CFR_C901.023.007
		REVISION	B

REV	DATE	JOB NO.	PROJECT TYPE	DES	DFT/CHKD	ENGR	APPD	DESCRIPTION
B	02/08/2019	7812180049	DESIGN PLAN	JL	VDS	DS	CK	ISSUED FOR REVIEW - 100%
A	01/04/2019	7812180049	DESIGN PLAN	JL	VDS	DS	CK	ISSUED FOR REVIEW - 90%



DESIGN PLAN AND PROFILE INSET B
SCALE: 1" = 50'



RECEIVED
FEB 12 2019
RALEIGH REGULATORY
FIELD OFFICE



LEGEND

--- EXISTING MAJOR CONTOURS	TEMPORARY IMPACTS
--- EXISTING MINOR CONTOURS	PERMANENT IMPACTS
--- WOOD LINE	
--- FENCE LINE	
--- WATER SURFACE	
--- DITCH LINE	
--- 100YR FP	
--- ZONE AE FLOODPLAIN LIMIT	
--- UNPAVED PATH	
WETLANDS	
x MW-24S	EXISTING MONITORING WELL
--- 190	PROPOSED MAJOR CONTOUR
---	PROPOSED MINOR CONTOUR
---	PROPOSED HAUL ROAD

wood.
Environment & Infrastructure Solutions
4021 STURUP CREEK DRIVE, SUITE 100 DURHAM
NC 27703
TEL: (919) 381-9900
FAX: (919) 381-9901
LICENSURE:
NC ENG'G # 1253
NC GEOLOGY # C247

SEAL

NOT FOR CONSTRUCTION

TITLE
CAPE FEAR CCP 1985 BASIN HAUL ROAD DESIGN PLAN
CAPE FEAR STEAM STATION
CHATHAM COUNTY, NORTH CAROLINA

DESIGN PLAN AND PROFILE INSET B

FOR
ISSUED FOR REVIEW - 100%

SCALE: AS SHOWN	DES: JL
DWG TYPE: DWG	DFTR: VDS
JOB NO: 7812180049	CHKD: DS
DATE: 02/08/2019	ENGR: CK
APPD: CK	

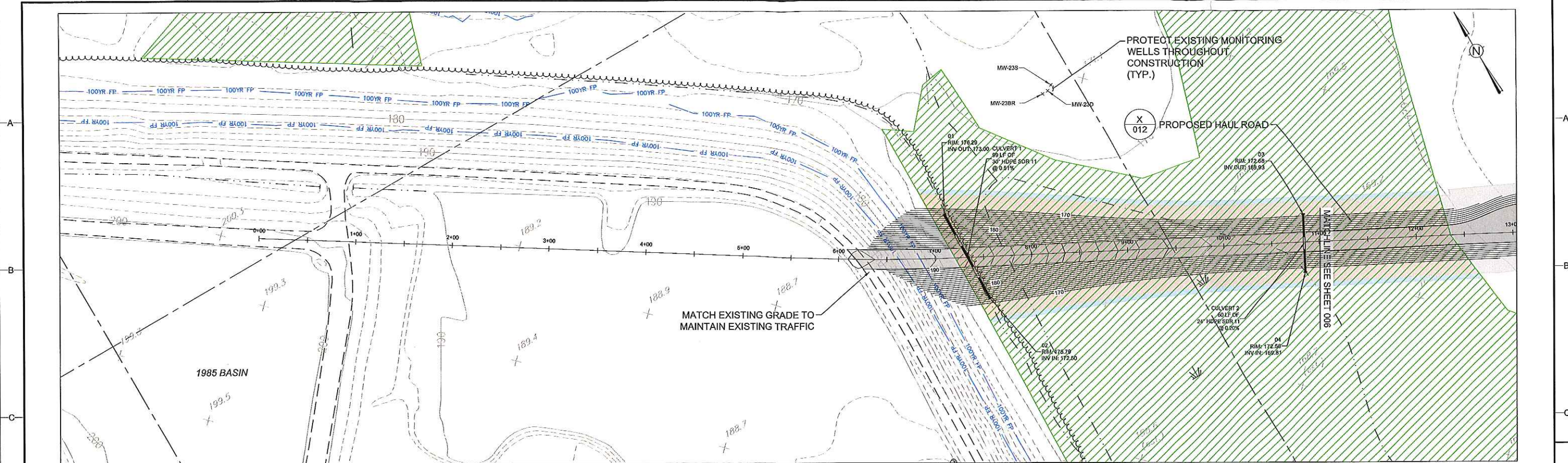
FILENAME: 006 DESIGN PLAN AND PROFILE INSET B.DWG

DWG SIZE: 22"x34"

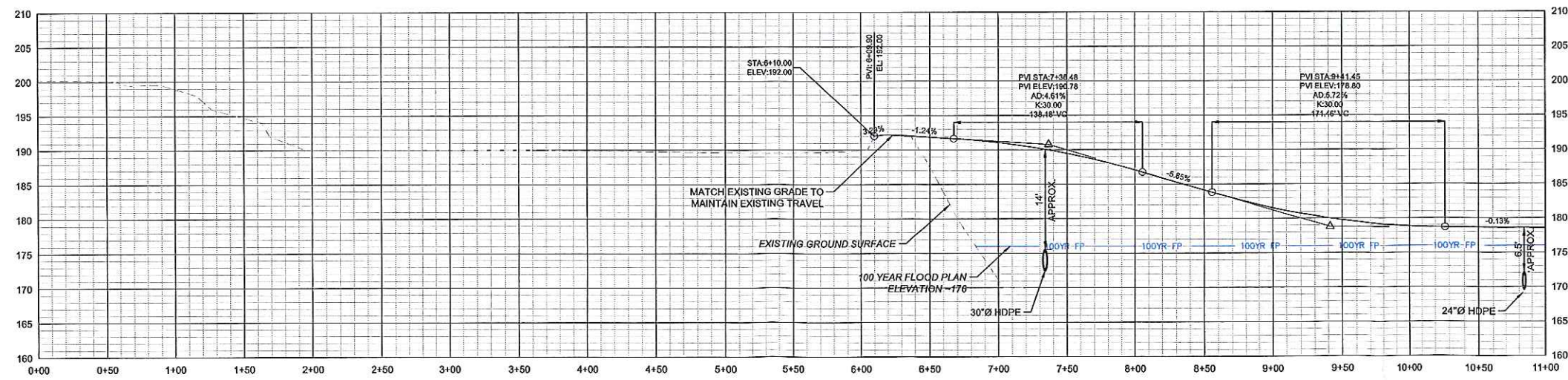
DRAWING NO. CFR_C901.023.006

REVISION: B

REV	DATE	JOB NO.	PROJECT TYPE	DES	DFTR	CHKD	ENGR	APPD	DESCRIPTION
B	02/08/2019	7812180049	DESIGN PLAN	JL	VDS	DS	CK	CK	ISSUED FOR REVIEW - 100%
A	01/04/2019	7812180049	DESIGN PLAN	JL	VDS	DS	CK	CK	ISSUED FOR REVIEW - 90%



DESIGN PLAN AND PROFILE INSET A
SCALE: 1" = 50'



PROPOSED HAUL ROAD CENTERLINE PROFILE:
STATIONS 0+00 - 11+00



LEGEND

--- EXISTING MAJOR CONTOURS	--- TEMPORARY IMPACTS
--- EXISTING MINOR CONTOURS	--- PERMANENT IMPACTS
--- WOOD LINE	
--- FENCE LINE	
--- WATER SURFACE	
--- DITCH LINE	
--- 100YR FP	--- ZONE AE FLOODPLAIN LIMIT
--- UNPAVED PATH	
--- WETLANDS	
x MW-24S	--- EXISTING MONITORING WELL
--- 190	--- PROPOSED MAJOR CONTOUR
---	--- PROPOSED MINOR CONTOUR
---	--- PROPOSED HAUL ROAD

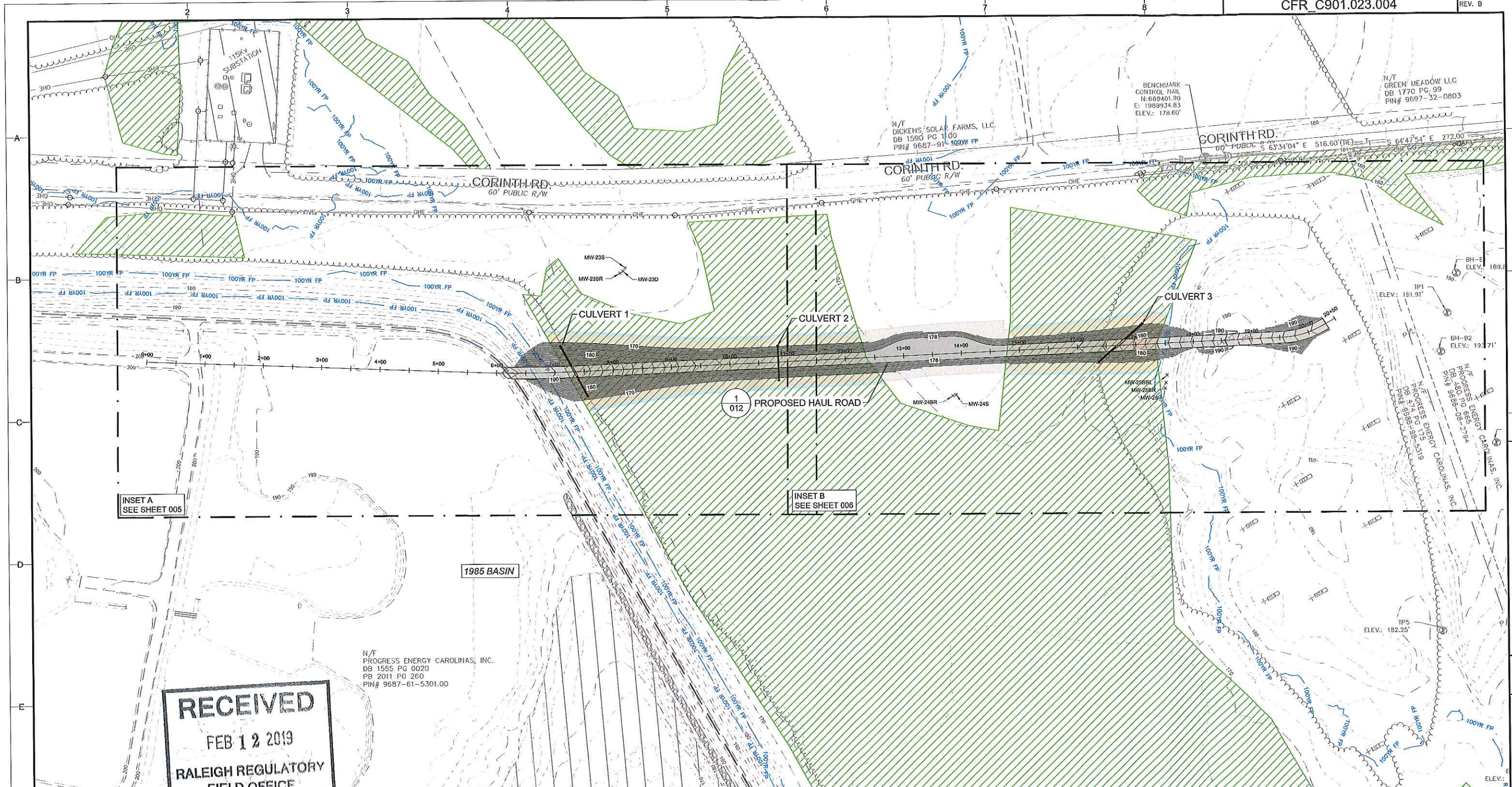
wood.
Environment & Infrastructure Solutions
4021 STIRRUP CREEK DRIVE, SUITE 100 DURHAM
NC 27705
TEL: (919) 281-9900
FAX: (919) 281-9901
LICENSURE:
NC ENG: F-1253
NC GEOLOGY: C-247

SEAL

NOT FOR CONSTRUCTION

TITLE CAPE FEAR CCP 1985 BASIN HAUL ROAD DESIGN PLAN CAPE FEAR STEAM STATION CHATHAM COUNTY, NORTH CAROLINA DESIGN PLAN AND PROFILE INSET A	
FOR ISSUED FOR REVIEW - 100%	
SCALE: AS SHOWN DWG TYPE: DWG JOB NO: 7812180049 DATE: 02/08/2019	DES: JL DFTR: VDS CHKD: DS ENGR: CK APPD: CK
FILENAME: .005 DESIGN PLAN AND PROFILE INSET A.DWG DWG SIZE: 22"x34"	DRAWING NO. CFR_C901.023.005 REVISION: B

REV	DATE	JOB NO.	PROJECT TYPE	DES	DFTR	CHKD	ENGR	APPD	DESCRIPTION
B	02/08/2019	7812180049	DESIGN PLAN	JL	VDS	DS	CK	CK	ISSUED FOR REVIEW - 100%
A	01/04/2019	7812180049	DESIGN PLAN	JL	VDS	DS	CK	CK	ISSUED FOR REVIEW - 90%



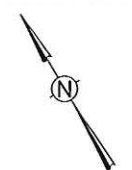
INSET A
SEE SHEET 005

INSET B
SEE SHEET 008

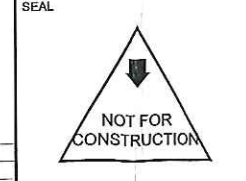
RECEIVED
 FEB 12 2019
 RALEIGH REGULATORY
 FIELD OFFICE

LEGEND
 --- EXISTING MAJOR CONTOURS
 --- EXISTING MINOR CONTOURS
 --- WOOD LINE
 --- FENCE LINE
 --- WATER SURFACE
 --- DITCH LINE
 --- PAVED PATH
 --- UNPAVED PATH
 [Hatched Area] WETLANDS
 --- ASH BASIN BOUNDARY
 --- 100YR FP
 xMW-245 EXISTING MONITORING WELL
 [Blue Area] TEMPORARY IMPACTS
 [Orange Area] PERMANENT IMPACTS

OVERALL DESIGN PLAN
 SCALE: 1" = 80'



wood.
 Environment & Infrastructure Solutions
 4021 STIRRUP CREEK DRIVE, SUITE 100 DURHAM
 NC 27703
 TEL: (919) 381-6990
 FAX: (919) 381-9901
 LICENSE: NC ENG: F-4728
 NC GEOLOGY: C-247



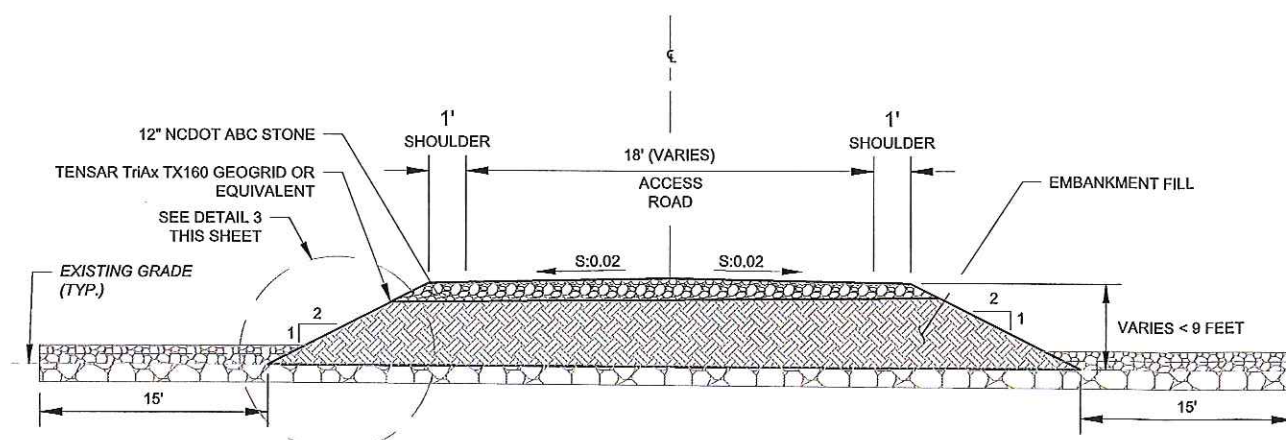
TITLE
 CAPE FEAR CCP 1985 BASIN HAUL ROAD DESIGN PLAN
 CAPE FEAR STEAM STATION
 CHATHAM COUNTY, NORTH CAROLINA

OVERALL DESIGN PLAN
 FOR ISSUED FOR REVIEW - 100%

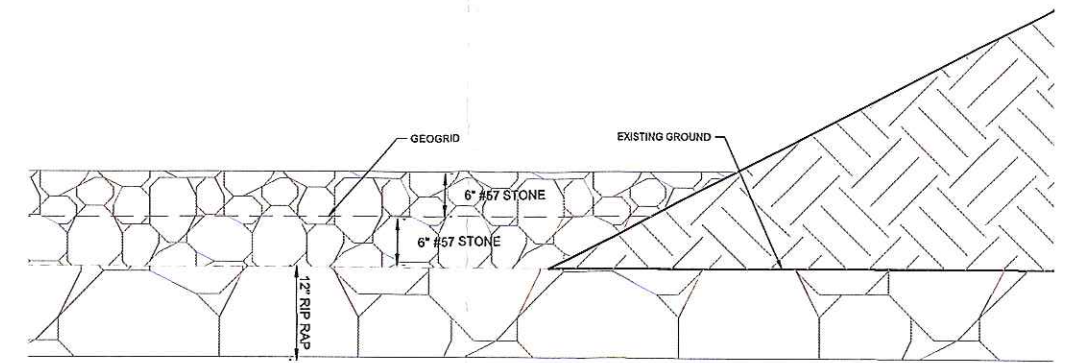
SCALE: AS SHOWN	DES: JL
DWG TYPE: DWG	DFT: VDS
JOB NO: 7812180049	CHKD: DS
DATE: 02/08/2019	ENGR: CK
APPD: CK	

FILENAME: 004 OVERALL DESIGN PLAN.DWG
 DWG SIZE: ANSI D 22"x34"
 DRAWING NO: CFR_C901.023.004
 REVISION: B

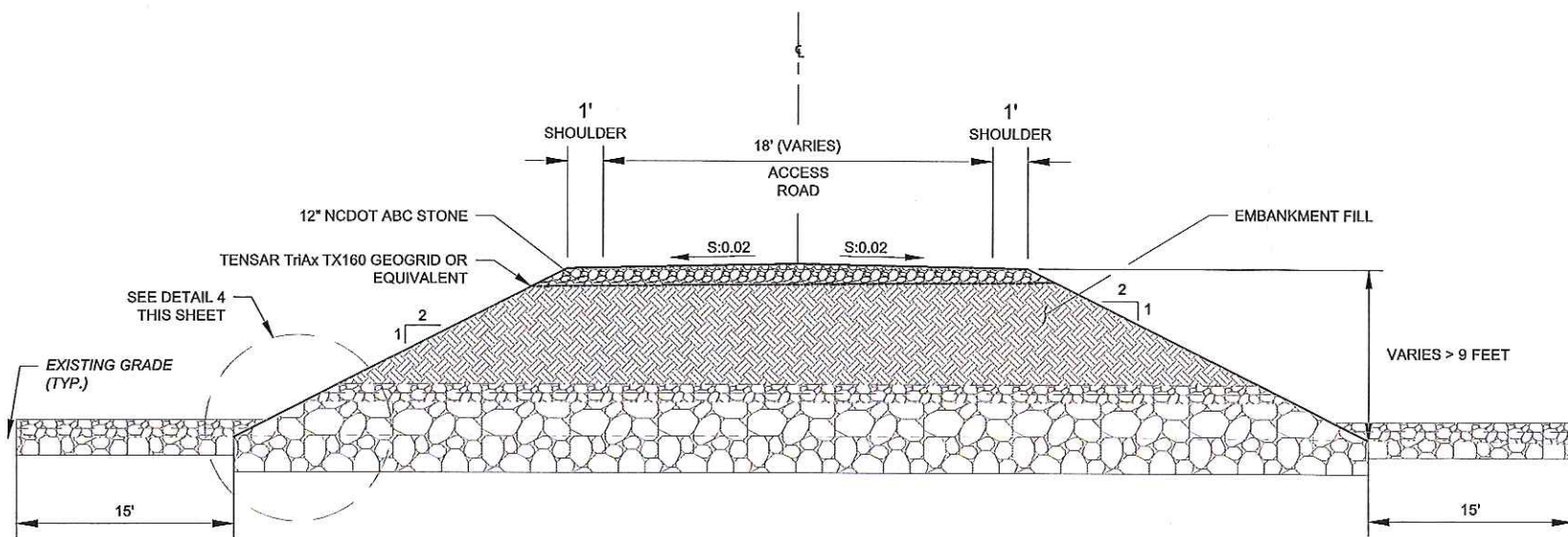
REV	DATE	JOB NO.	PROJECT TYPE	DES	DFT	CHKD	ENGR	APPD	DESCRIPTION
B	02/08/2019	7812180049	DESIGN PLAN	JL	VDS	DS	CK	CK	ISSUED FOR REVIEW - 100%
A	01/04/2019	7812180049	DESIGN PLAN	JL	VDS	DS	CK	CK	ISSUED FOR REVIEW - 90%



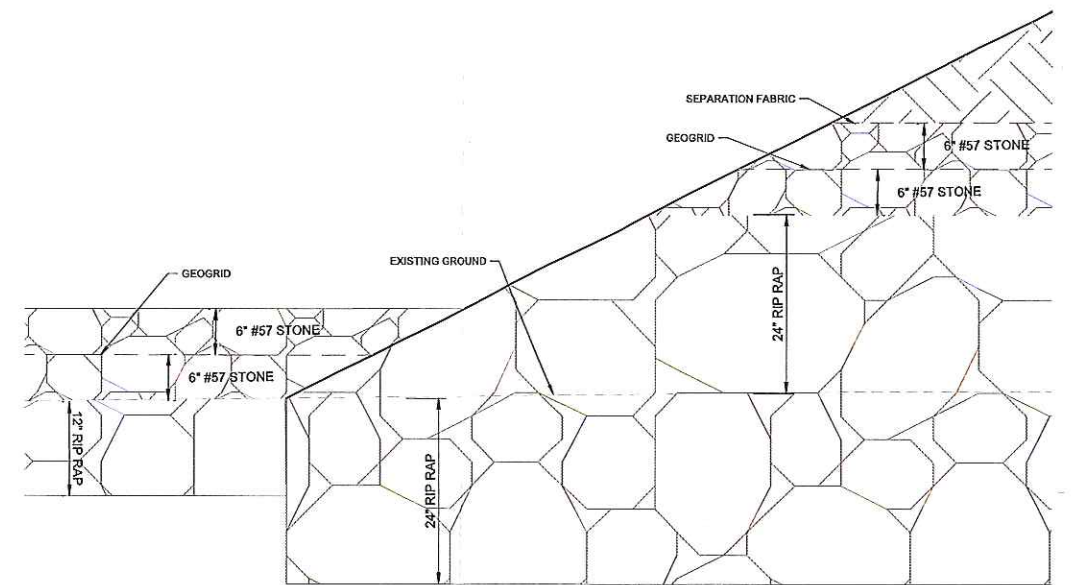
1
012
TYPICAL ACCESS ROAD CROSS SECTION
STATIONS: START - 7+00, 10+00 - 16+20, 17-50 - END
SCALE: NTS



3
012
ENLARGED VIEW TYPICAL ACCESS ROAD CROSS SECTION
STATIONS: START - 7+00, 10+00 - 16+20, 17-50 - END
SCALE: NTS



2
012
ACCESS ROAD W/ STABILIZATION CROSS SECTION
STATIONS: 7+00 - 10+00 AND 16+20 - 17-50
SCALE: NTS



4
012
ENLARGED VIEW ACCESS ROAD W/ STABILIZATION CROSS SECTION
STATIONS: 7+00 - 10+00 AND 16+20 - 17-50
SCALE: NTS

RECEIVED
FEB 12 2019
RALEIGH REGULATORY
FIELD OFFICE

wood.
Environment & Infrastructure Solutions
4021 STRURUP CREEK DRIVE, SUITE 100 DURHAM
NC 27703
TEL: (919) 381-9900
FAX: (919) 381-9901
LICENSURE:
NO. ENG. P-1253
NO. GEOLOGY: C-247

SEAL

NOT FOR CONSTRUCTION

TITLE CAPE FEAR CCP 1985 BASIN HAUL ROAD DESIGN PLAN CAPE FEAR STEAM STATION CHATHAM COUNTY, NORTH CAROLINA		
DETAILS		
FOR ISSUED FOR REVIEW - 100%		
SCALE: AS SHOWN	DES: JL	
DWG TYPE: DWG	DFTR: VDS	
JOB NO: 7812180049	CHKD: DS	
DATE: 02/08/2019	ENGR: CK	
APPD: CK		
FILENAME: 012 DETAILS.DWG	DRAWING NO.	REVISION
ANSI D 22"x34"	CFR_C901.023.012	B

REV	DATE	JOB NO.	PROJECT TYPE	DES	DFTR	CHKD	ENGR	APPD	DESCRIPTION
B	02/08/2019	7812180049	DESIGN PLAN	JL	VDS	DS	CK	CK	ISSUED FOR REVIEW - 100%
A	01/04/2019	7812180049	DESIGN PLAN	JL	VDS	DS	CK	CK	ISSUED FOR REVIEW - 90%