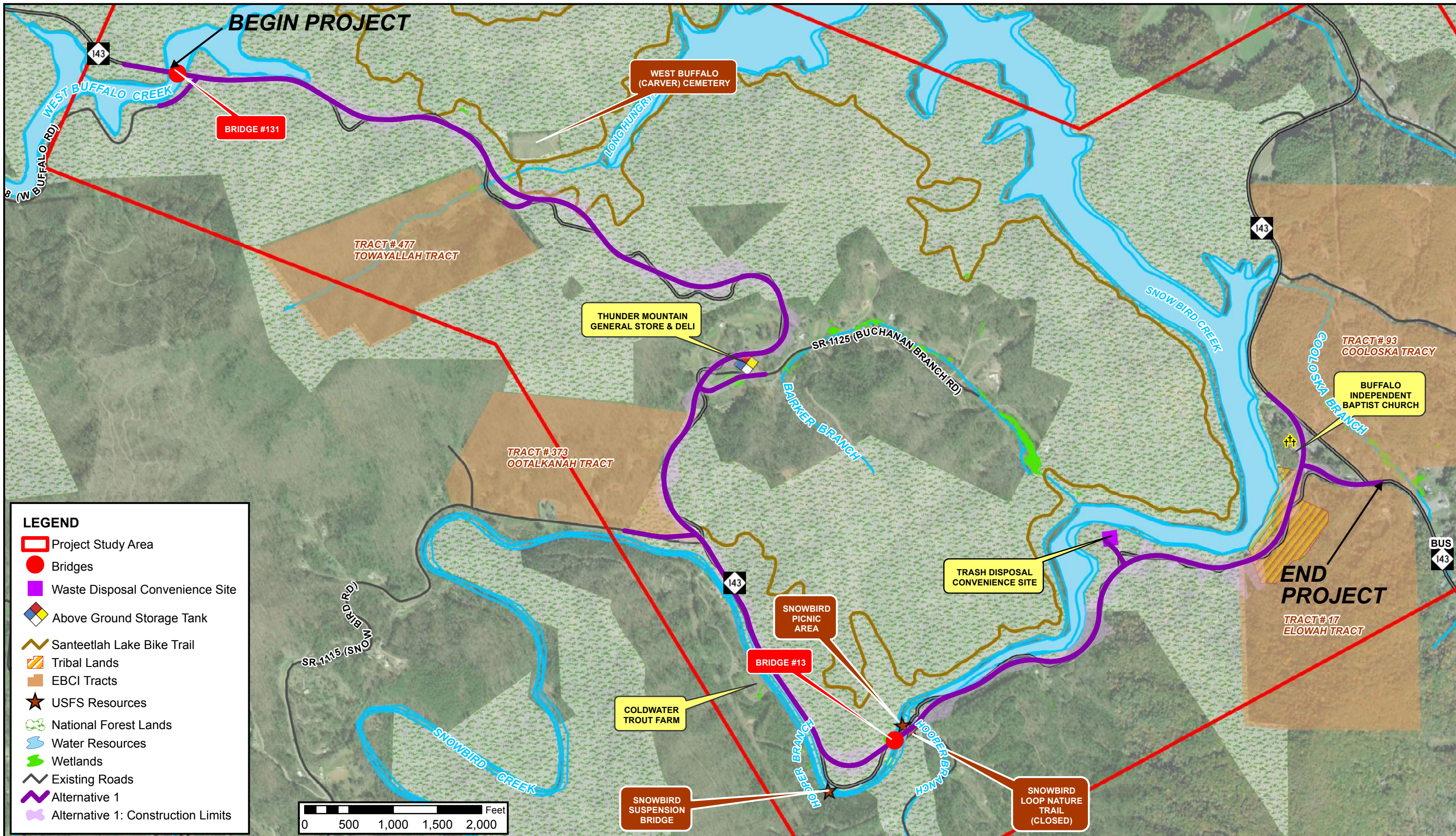


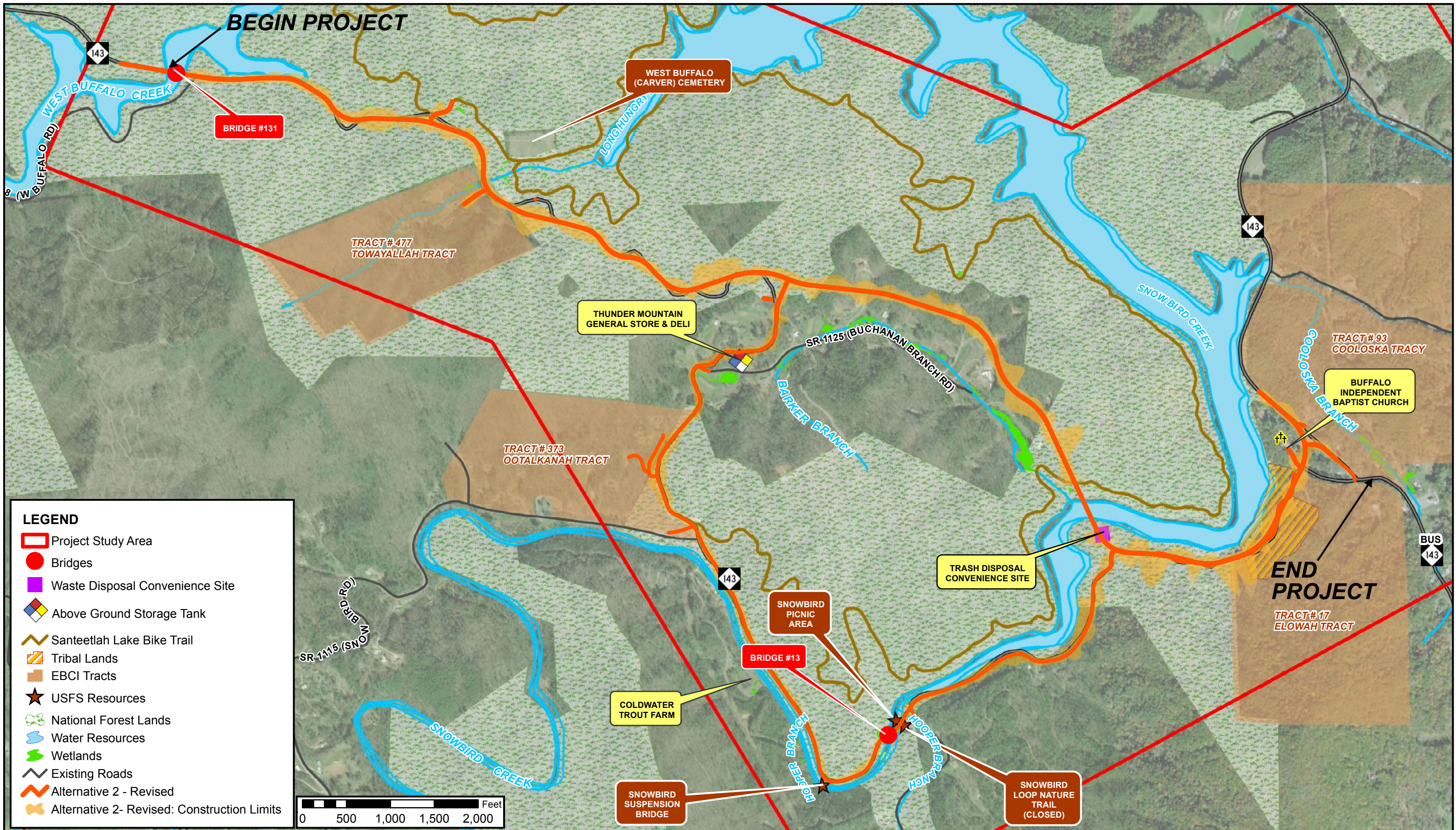
**NC 143 Improvements**  
**From West Buffalo Creek to NC 143 Business in Graham County**  
**TIP R-2822B**

**EXHIBIT 1: ENVIRONMENTAL FEATURES**



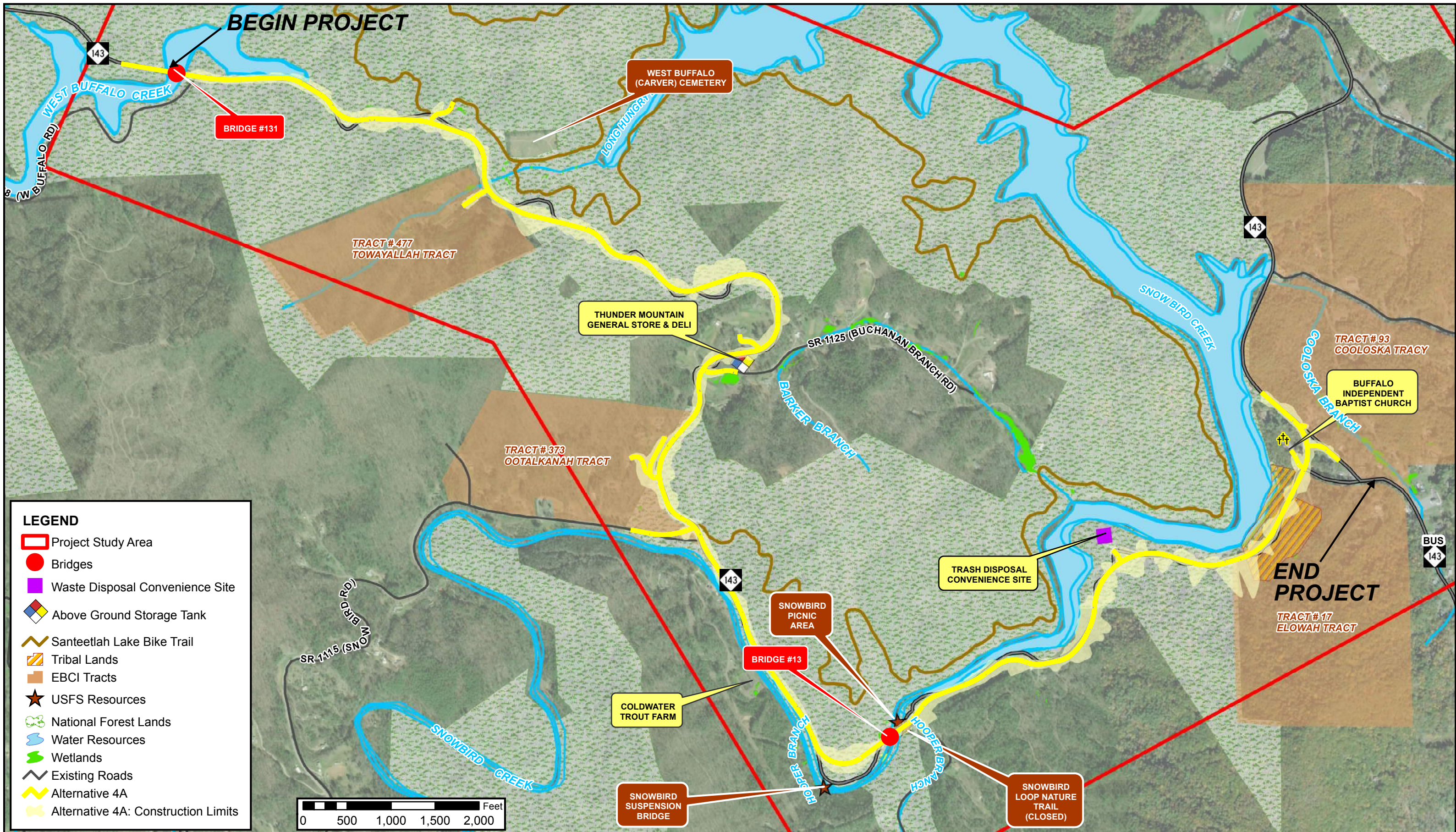
**NC 143 Improvements  
From West Buffalo Creek to NC 143 Business in Graham County  
TIP R-2822B**

**EXHIBIT 2A: ALTERNATIVE 1**



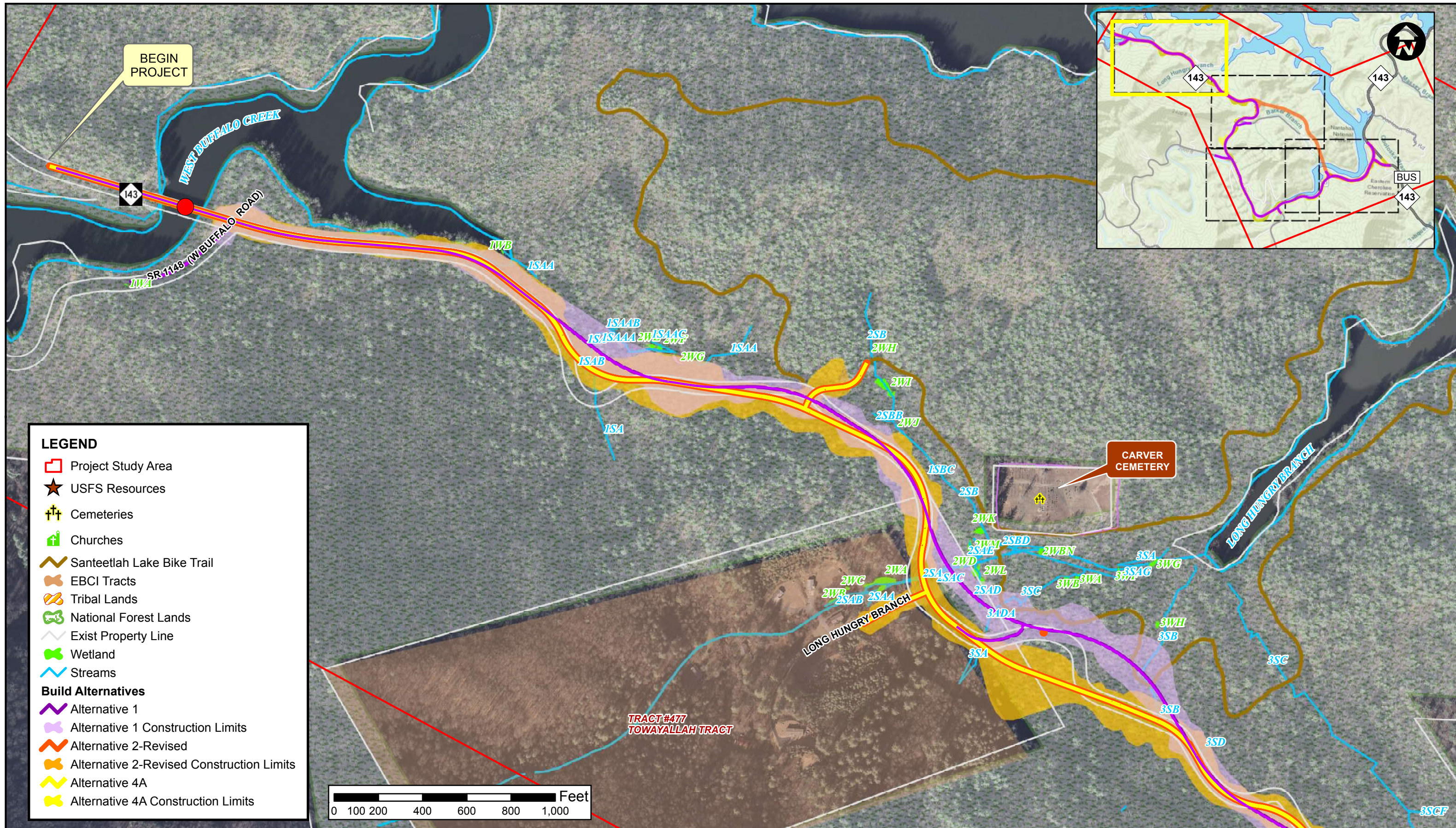
**NC 143 Improvements**  
**From West Buffalo Creek to NC 143 Business in Graham County**  
**TIP R-2822B**

EXHIBIT 2B: ALTERNATIVE 2-REVISED



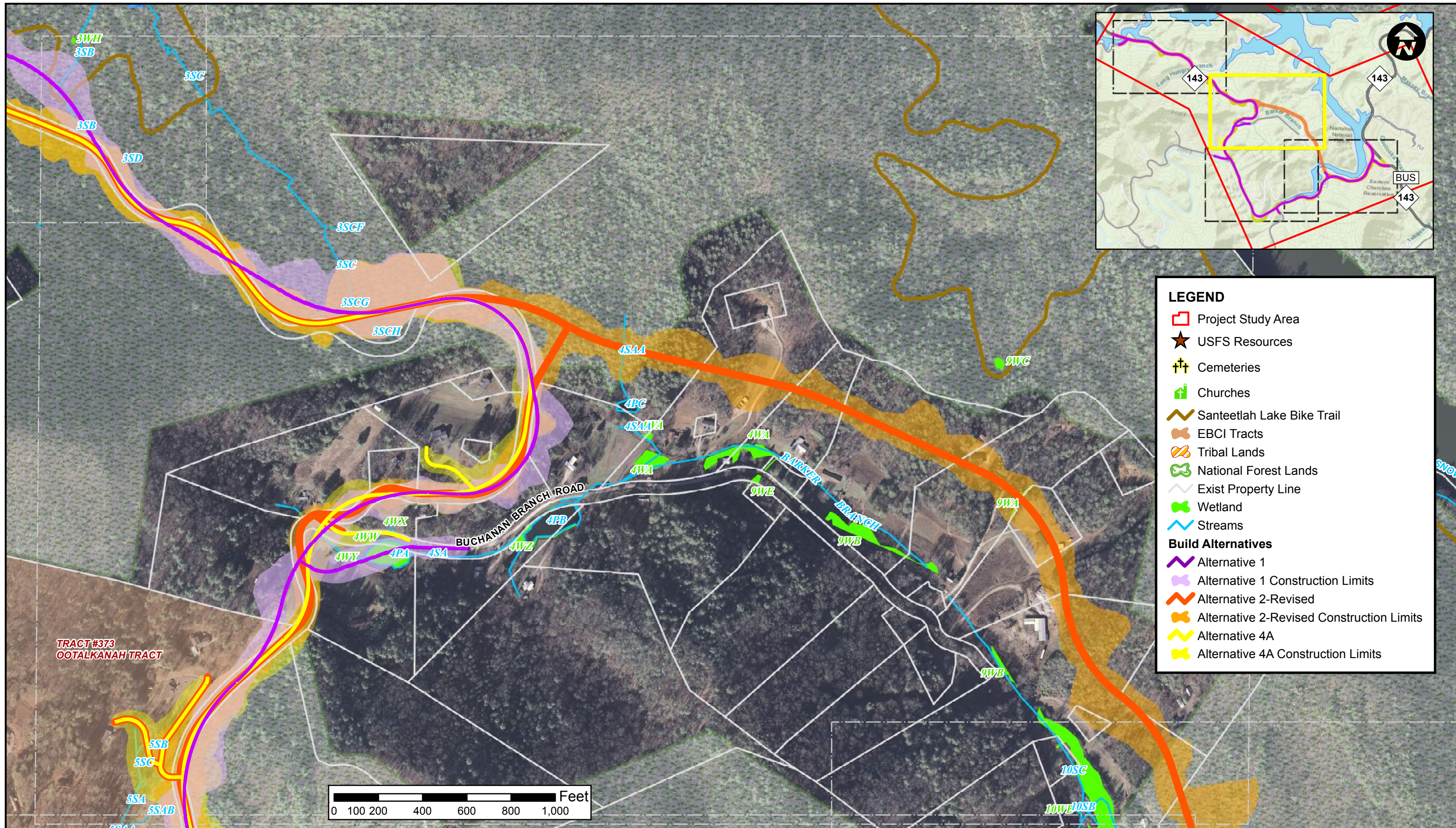
**NC 143 Improvements**  
**From West Buffalo Creek to NC 143 Business in Graham County**  
**TIP R-2822B**

EXHIBIT 2B: ALTERNATIVE 2-REVISED



**NC 143 Improvements**  
**from From West Buffalo Creek to NC 143 Business in Graham County**  
**TIP R-2822B**

EXHIBIT 3A: COMBINED ALTERNATIVES

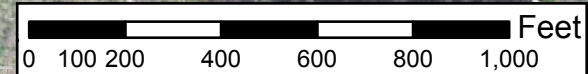


**LEGEND**

- Project Study Area
- ★ USFS Resources
- ✙ Cemeteries
- ✙ Churches
- ↪ Santeetlah Lake Bike Trail
- ▭ EBCI Tracts
- ▭ Tribal Lands
- ▭ National Forest Lands
- Exist Property Line
- ▭ Wetland
- Streams

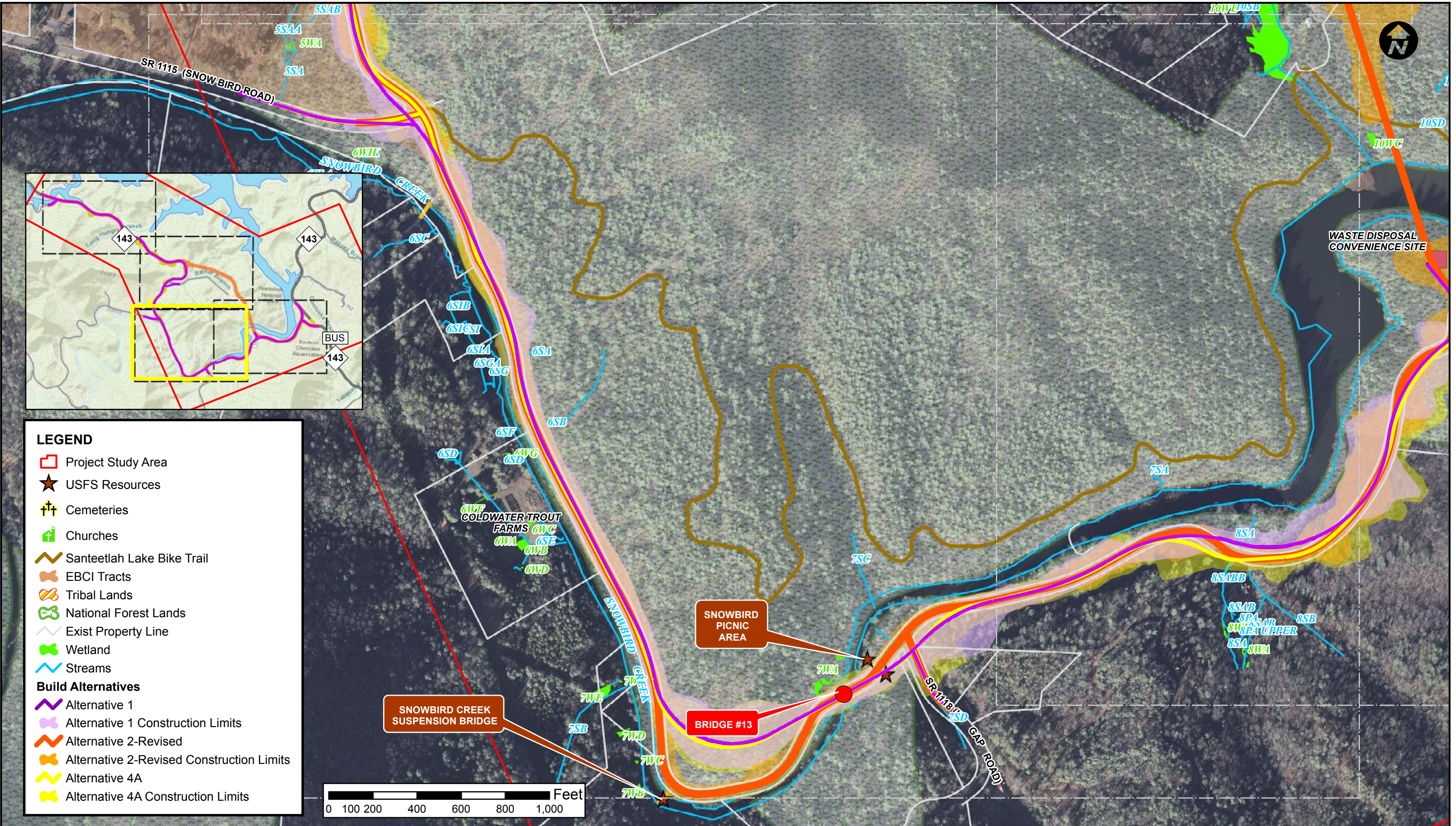
**Build Alternatives**

- Alternative 1
- ▭ Alternative 1 Construction Limits
- Alternative 2-Revised
- ▭ Alternative 2-Revised Construction Limits
- Alternative 4A
- ▭ Alternative 4A Construction Limits



**NC 143 Improvements**  
**from From West Buffalo Creek to NC 143 Business in Graham County**  
**TIP R-2822B**

**EXHIBIT 3B: COMBINED ALTERNATIVES**



**LEGEND**

- ▭ Project Study Area
- ★ USFS Resources
- ✚ Cemeteries
- ✚ Churches
- Santeetlah Lake Bike Trail
- EBCI Tracts
- Tribal Lands
- National Forest Lands
- Exist Property Line
- Wetland
- Streams

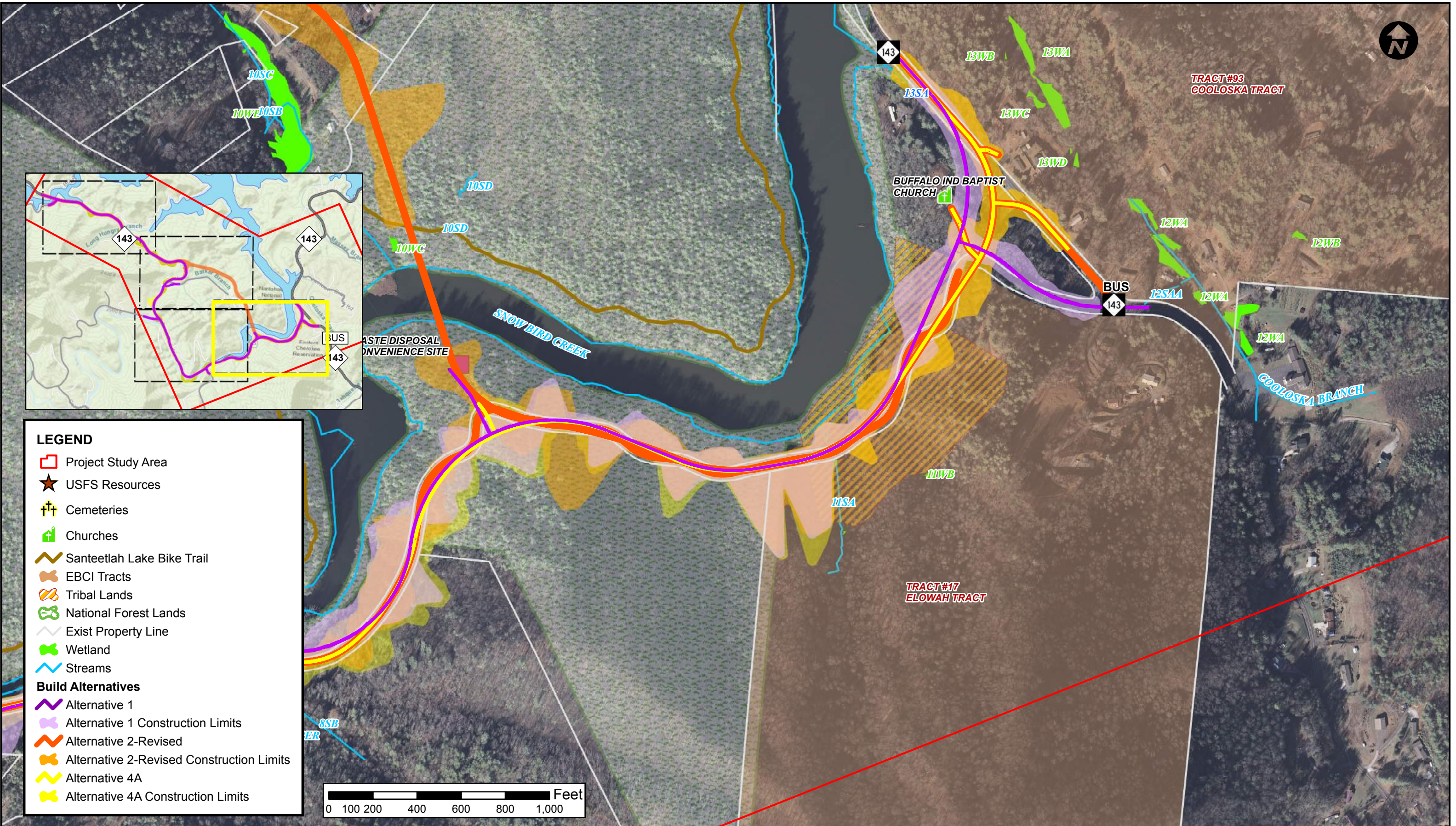
**Build Alternatives**

- Alternative 1
- Alternative 1 Construction Limits
- Alternative 2-Revised
- Alternative 2-Revised Construction Limits
- Alternative 4A
- Alternative 4A Construction Limits



**NC 143 Improvements  
from From West Buffalo Creek to NC 143 Business in Graham County  
TIP R-2822B**

**EXHIBIT 3C: COMBINED ALTERNATIVES**



**NC 143 Improvements**  
**from From West Buffalo Creek to NC 143 Business in Graham County**  
**TIP R-2822B**

EXHIBIT 3D: COMBINED ALTERNATIVES