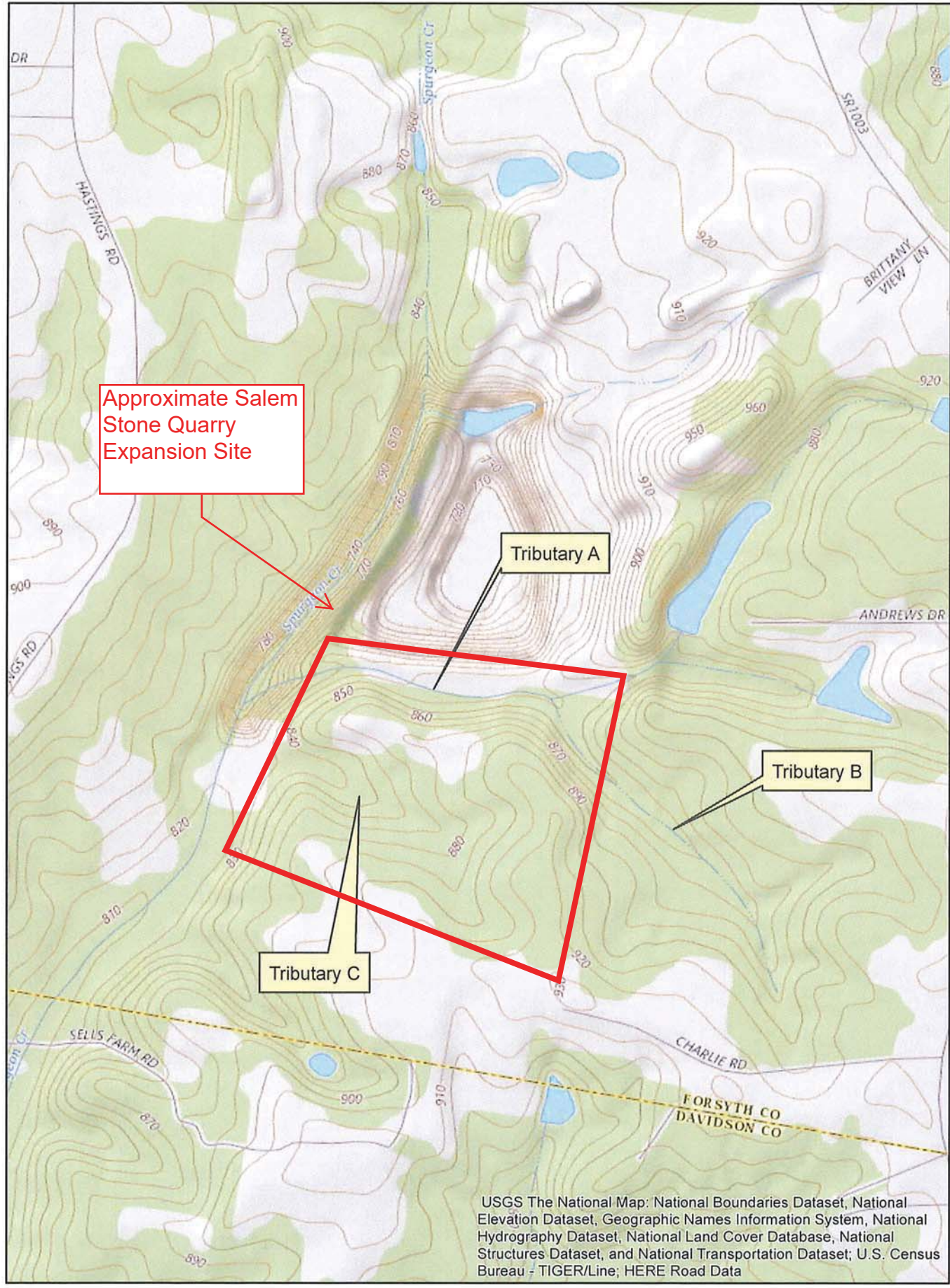


Source: Esri, DigitalGlobe, GeoEye, Earthstar Geographics, CNES/Airbus DS, USDA, USGS, AeroGRID, IGN, and the GIS User Community



Salem Stone (Current)

Approximate
Salem Stone
Quarry Expansion
Site

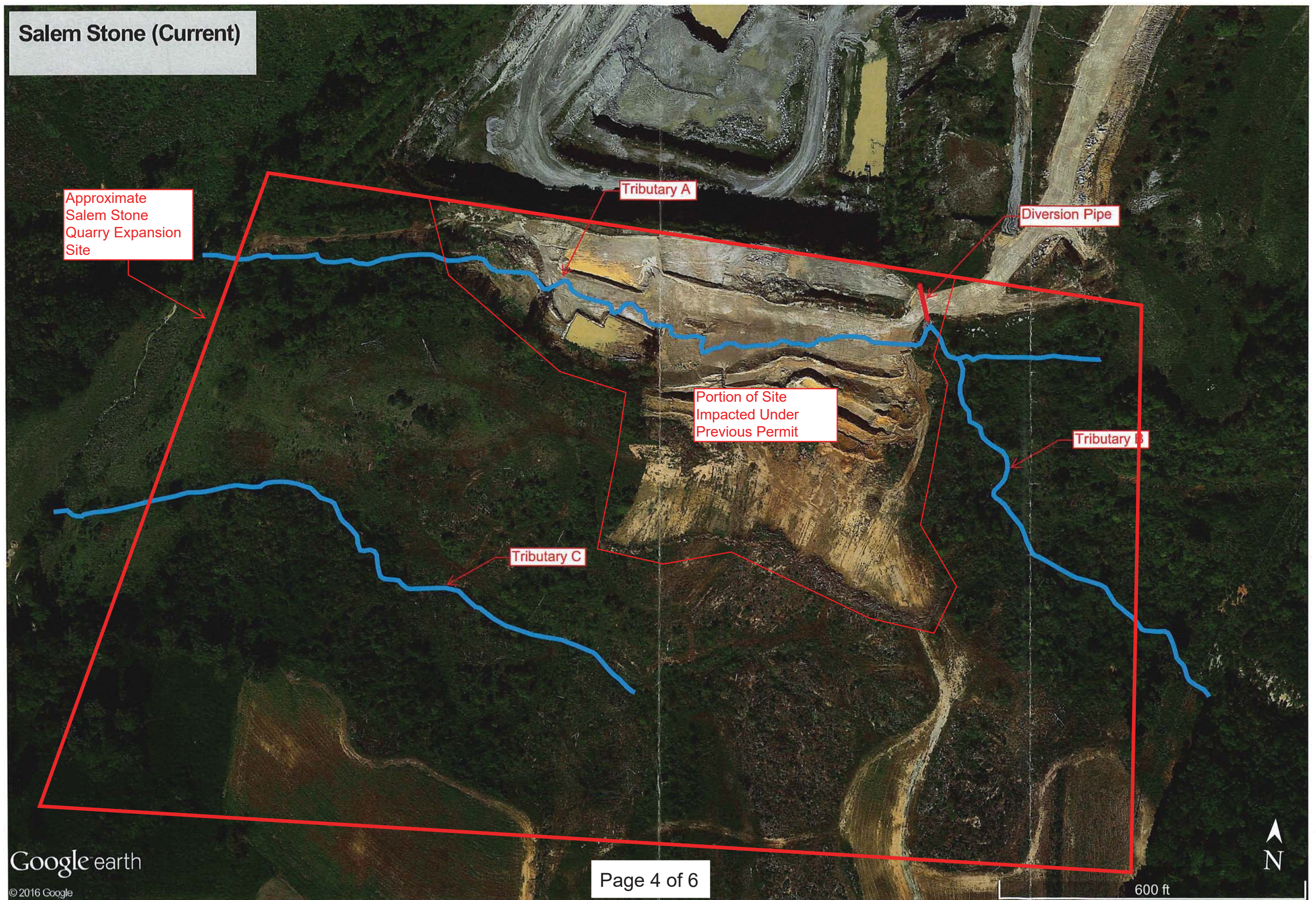
Tributary A

Diversion Pipe

Portion of Site
Impacted Under
Previous Permit

Tributary B

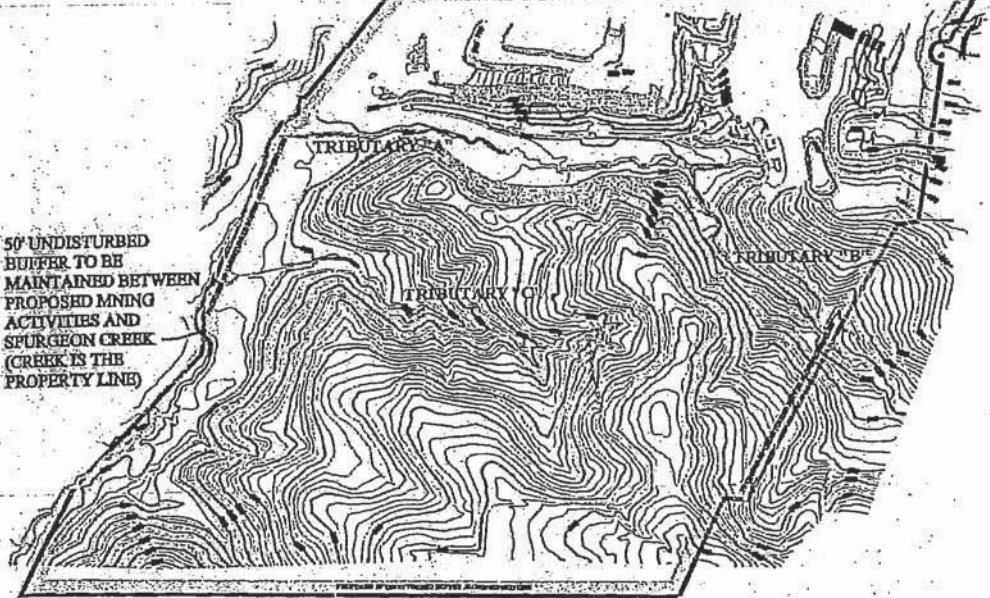
Tributary C



SALEM STONE QUARRY

EXISTING 50' UNDISTURBED BUFFER
ALONG ENTIRE PROPERTY BOUNDARY

50' UNDISTURBED
BUFFER TO BE
MAINTAINED BETWEEN
PROPOSED MINING
ACTIVITIES AND
SPURGEON CREEK
(CREEK IS THE
PROPERTY LINE)



INSERT MAP OF SALEM STONE QUARRY
SCALE 1" = 400'

