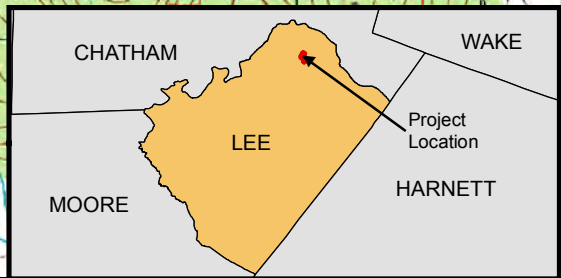
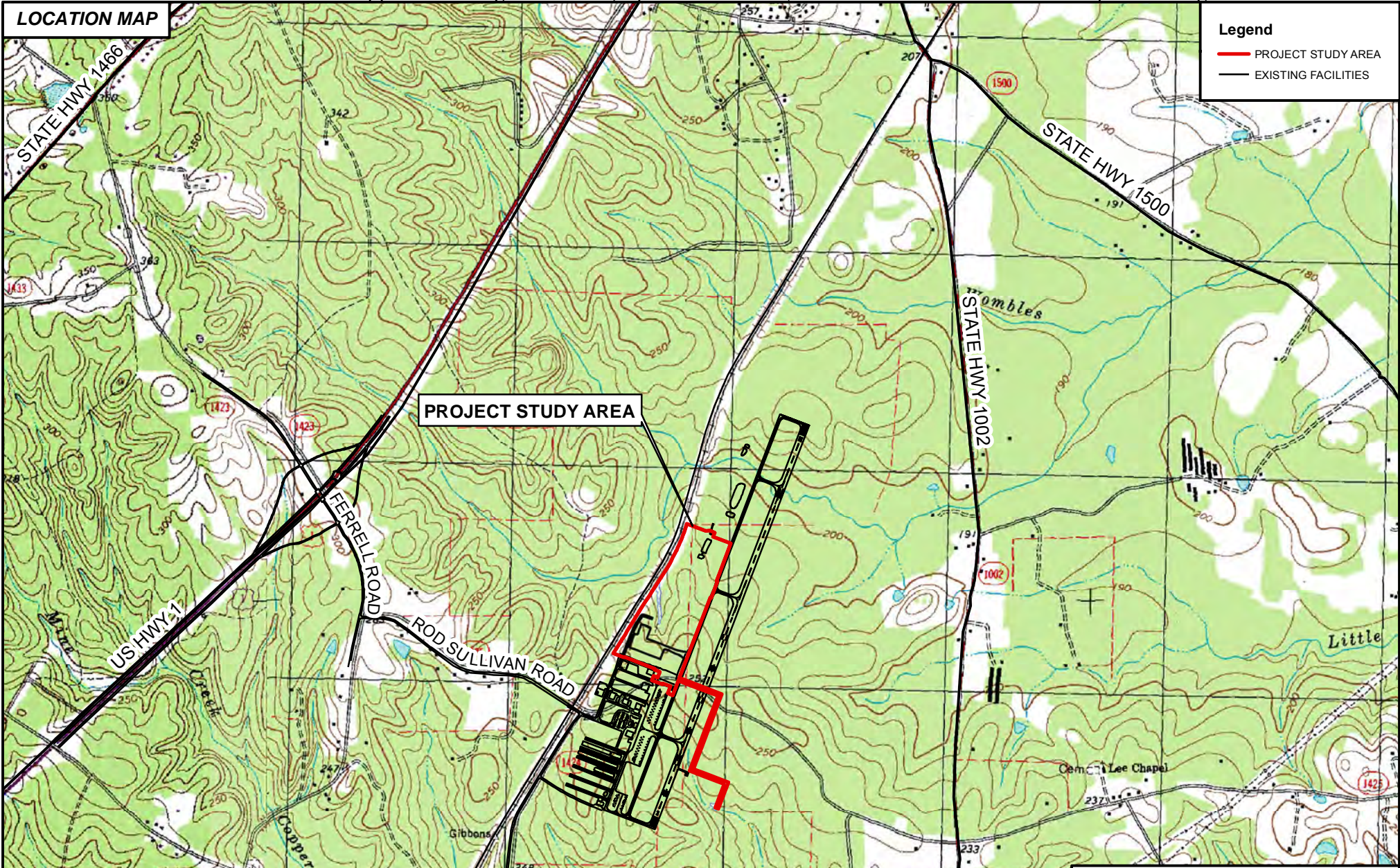


**LOCATION MAP**

**Legend**

- PROJECT STUDY AREA
- EXISTING FACILITIES



**RALEIGH EXECUTIVE JETPORT**

**NORTH TERMINAL DEVELOPMENT**  
 LEE COUNTY, N.C.  
 DATE: AUGUST 23, 2018  
 MONCURE 7.5' USGS TOPO  
 FIGURE 1 OF 6

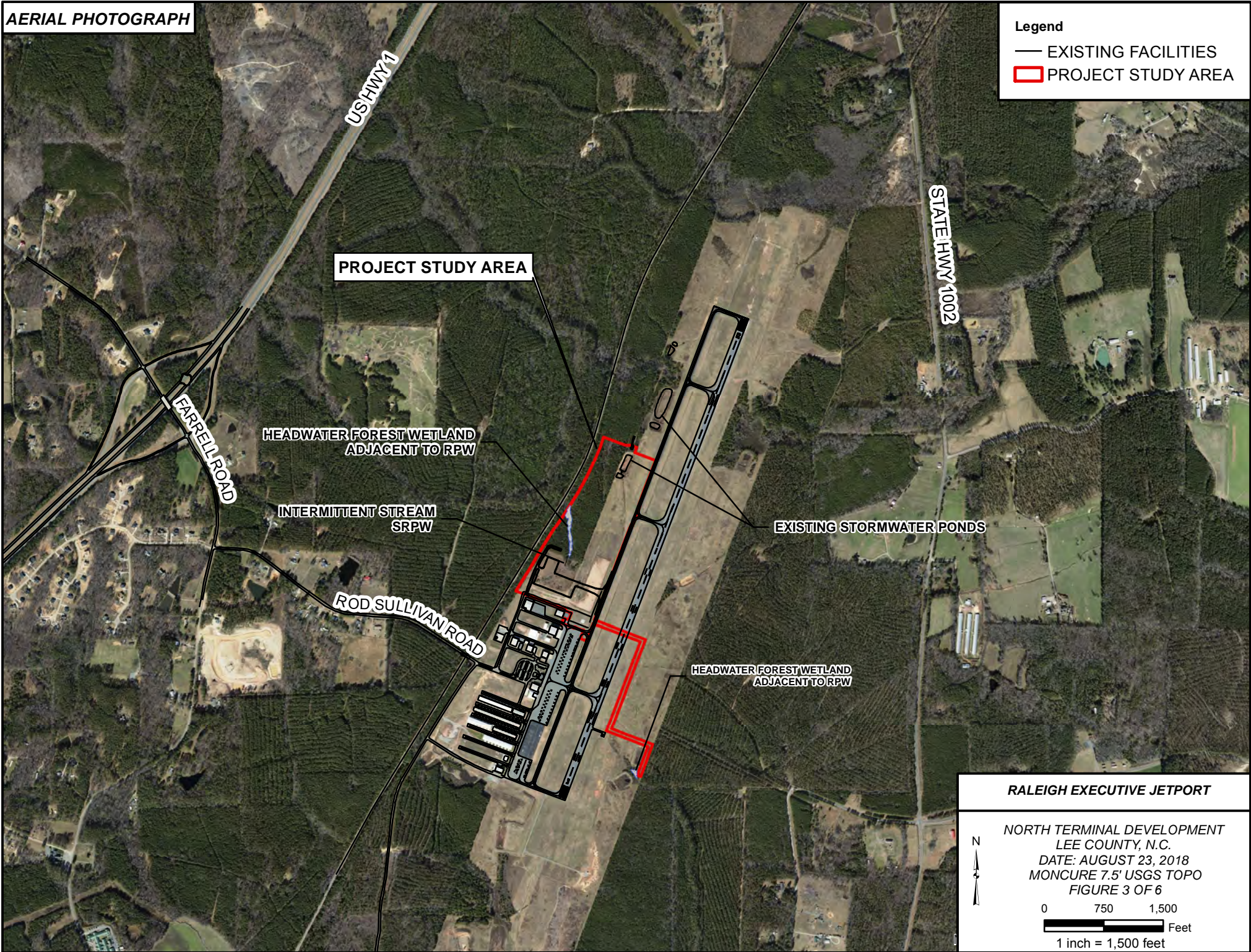
0 1,000 2,000  
 Feet  
 1 inch = 2,000 feet



**AERIAL PHOTOGRAPH**

**Legend**

- EXISTING FACILITIES
- ▭ PROJECT STUDY AREA



**RALEIGH EXECUTIVE JETPORT**

NORTH TERMINAL DEVELOPMENT  
LEE COUNTY, N.C.  
DATE: AUGUST 23, 2018  
MONCURE 7.5' USGS TOPO  
FIGURE 3 OF 6

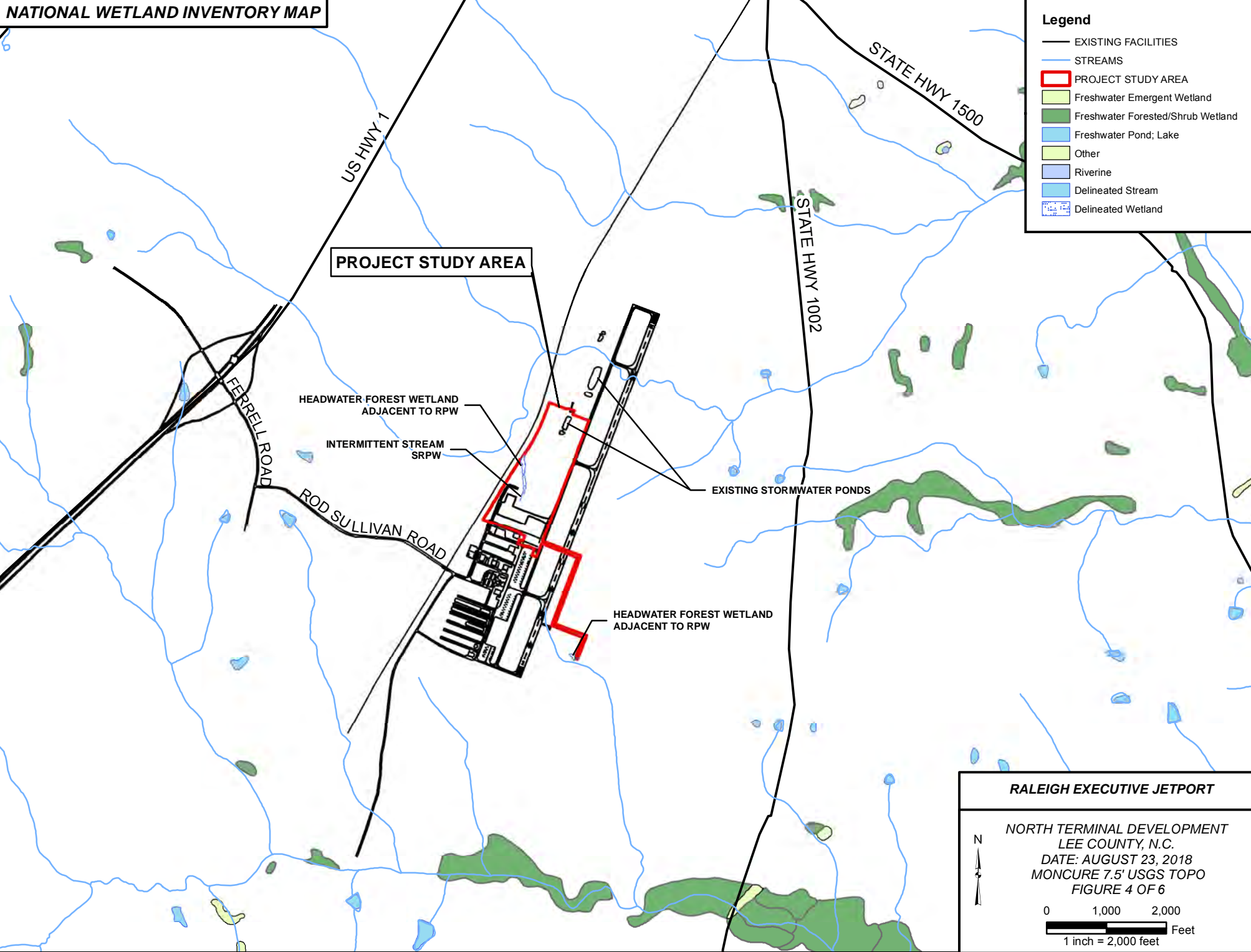
0 750 1,500  
Feet  
1 inch = 1,500 feet



**NATIONAL WETLAND INVENTORY MAP**

**Legend**

- EXISTING FACILITIES
- STREAMS
- ▭ PROJECT STUDY AREA
- ▭ Freshwater Emergent Wetland
- ▭ Freshwater Forested/Shrub Wetland
- ▭ Freshwater Pond; Lake
- ▭ Other
- ▭ Riverine
- ▭ Delineated Stream
- ▭ Delineated Wetland



**RALEIGH EXECUTIVE JETPORT**

NORTH TERMINAL DEVELOPMENT  
LEE COUNTY, N.C.  
DATE: AUGUST 23, 2018  
MONCURE 7.5' USGS TOPO  
FIGURE 4 OF 6

0 1,000 2,000  
Feet  
1 inch = 2,000 feet



**ALTERNATIVES**

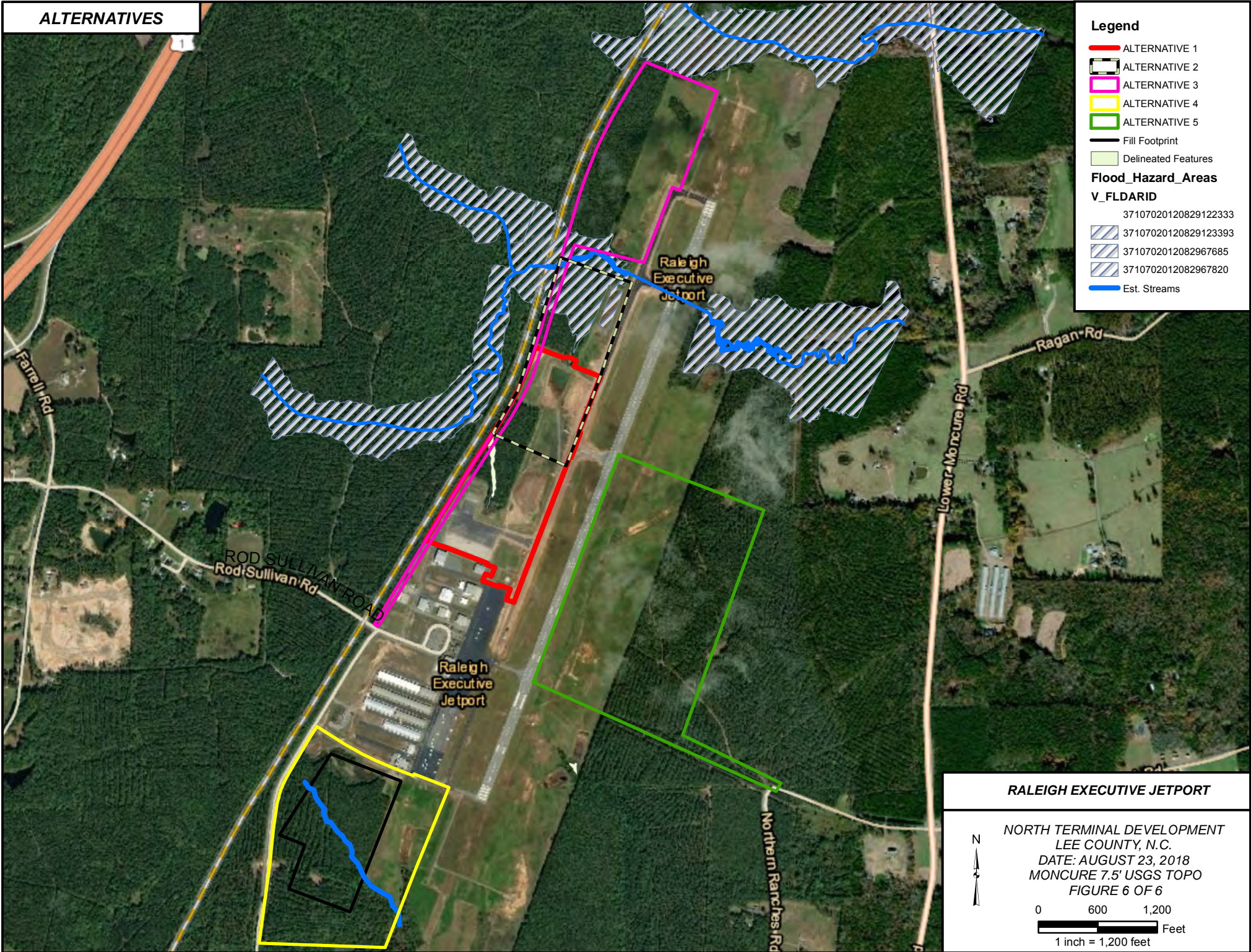
**Legend**

- ALTERNATIVE 1
- ALTERNATIVE 2
- ALTERNATIVE 3
- ALTERNATIVE 4
- ALTERNATIVE 5
- Fill Footprint
- Delineated Features

**Flood\_Hazard\_Areas**

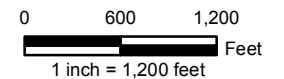
**V\_FLDARID**

- 37107020120829122333
- 37107020120829123393
- 3710702012082967685
- 3710702012082967820
- Est. Streams







**RALEIGH EXECUTIVE JETPORT**

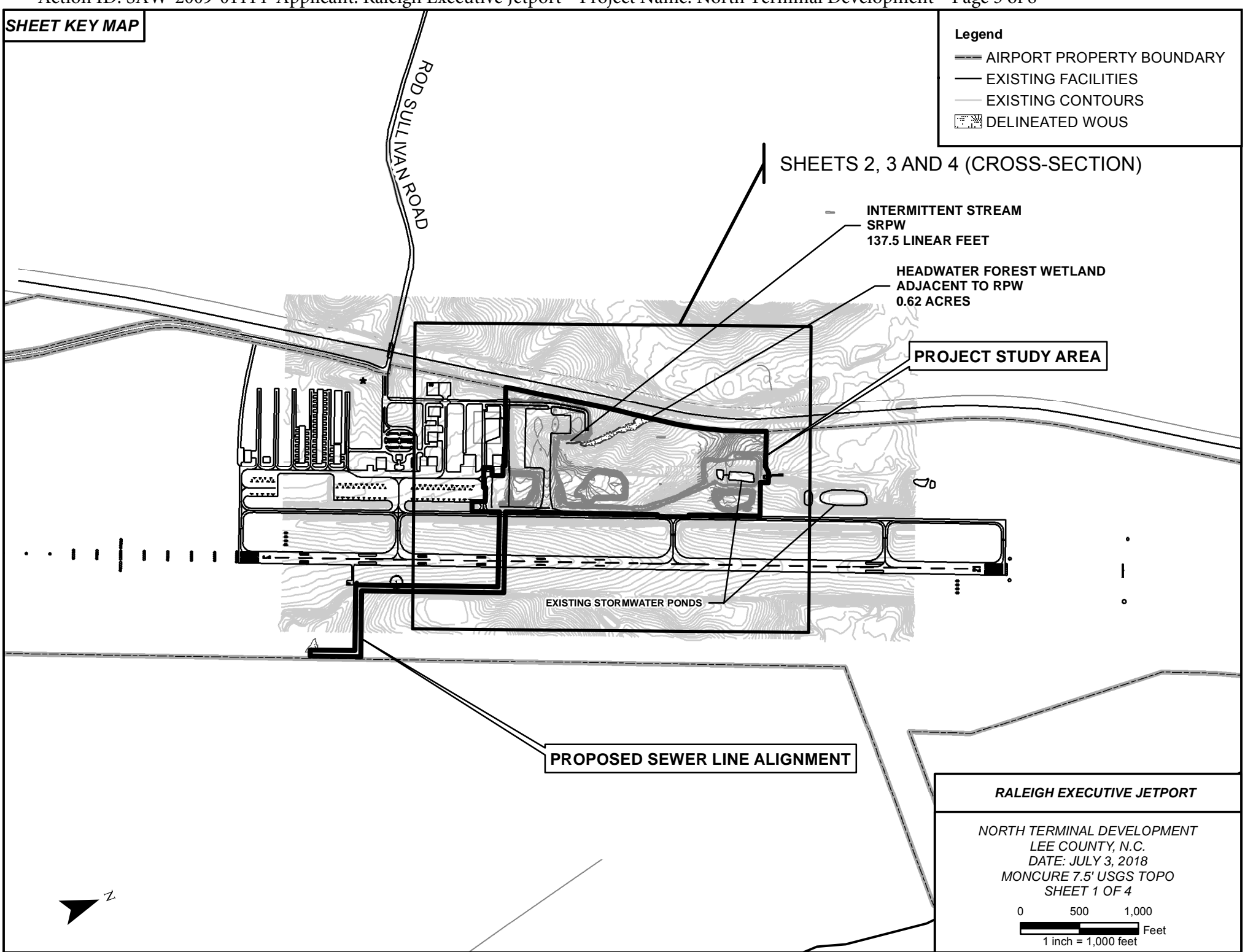
NORTH TERMINAL DEVELOPMENT  
 LEE COUNTY, N.C.  
 DATE: AUGUST 23, 2018  
 MONCURE 7.5' USGS TOPO  
 FIGURE 6 OF 6





**SHEET KEY MAP**

- Legend**
-  AIRPORT PROPERTY BOUNDARY
  -  EXISTING FACILITIES
  -  EXISTING CONTOURS
  -  DELINEATED WOVS



SHEETS 2, 3 AND 4 (CROSS-SECTION)

INTERMITTENT STREAM  
SRPW  
137.5 LINEAR FEET

HEADWATER FOREST WETLAND  
ADJACENT TO RPW  
0.62 ACRES

**PROJECT STUDY AREA**

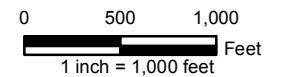
EXISTING STORMWATER PONDS

**PROPOSED SEWER LINE ALIGNMENT**







**RALEIGH EXECUTIVE JETPORT**

NORTH TERMINAL DEVELOPMENT  
LEE COUNTY, N.C.  
DATE: JULY 3, 2018  
MONCURE 7.5' USGS TOPO  
SHEET 1 OF 4



**EXISTING CONDITIONS**

**PROJECT STUDY AREA**

- Legend**
-  DELINEATED WOUS
  -  PROJECT AREA BOUNDARY
  -  EXISTING FACILITIES
  -  EXISTING GROUND CONTOURS

**INTERMITTENT STREAM  
SRPW**

**HEADWATER FOREST WETLAND  
ADJACENT TO RPW**

**Stockpile Area Limits**

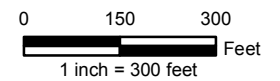
**EXISTING AIRPORT FACILITIES**

**EXISTING STORMWATER PONDS**



**RALEIGH EXECUTIVE JETPORT**

**NORTH TERMINAL DEVELOPMENT  
LEE COUNTY, N.C.  
DATE: JULY 3, 2018  
MONCURE 7.5' USGS TOPO  
SHEET 2 OF 4**







**PROPOSED PLAN VIEW**

**PROJECT STUDY AREA**

Proposed New Construction

HEADWATER FOREST-WETLAND  
ADJACENT TO RPW  
0.48 ACRES FILL

**Legend**

-  **PROJECT AREA BOUNDARY**
-  **DELINEATED WETLAND BOUNDARY**
-  **DELINEATED WETLAND/STREAM**
-  **IMPACTED WETLAND/STREAM**

Retaining Wall

Limits of Grading

A'

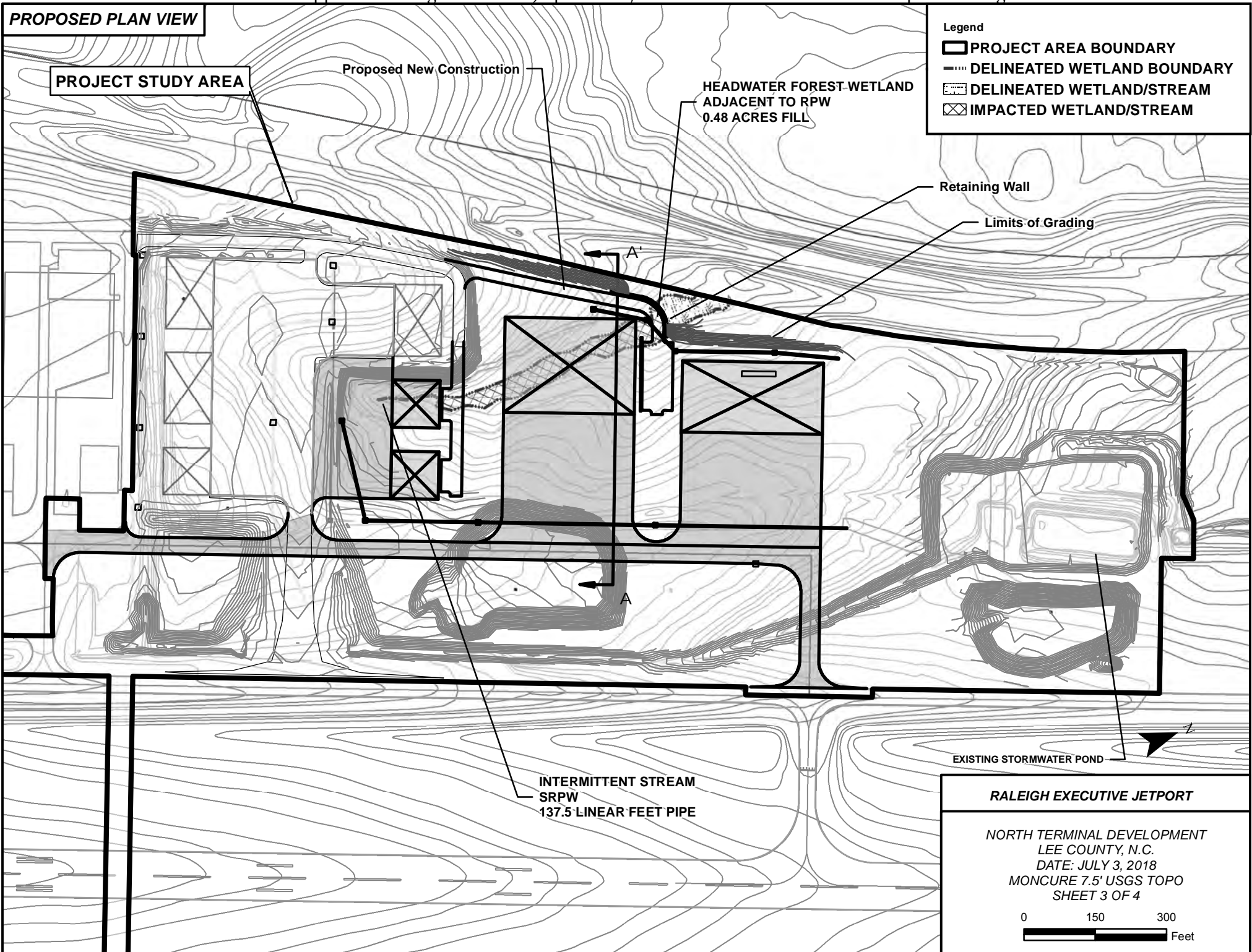
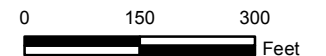
A

EXISTING STORMWATER POND

INTERMITTENT STREAM  
SRPW  
137.5 LINEAR FEET PIPE

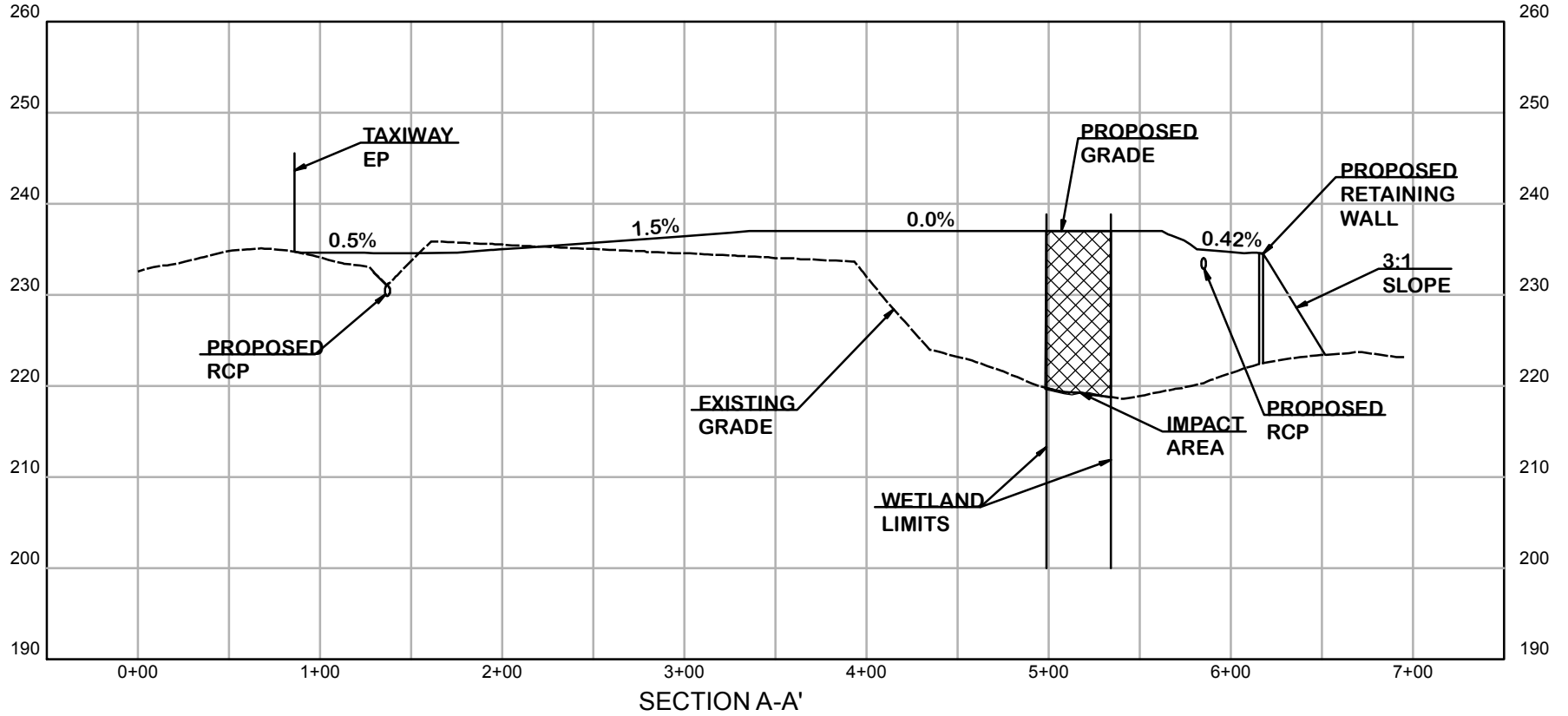
**RALEIGH EXECUTIVE JETPORT**

NORTH TERMINAL DEVELOPMENT  
LEE COUNTY, N.C.  
DATE: JULY 3, 2018  
MONCURE 7.5' USGS TOPO  
SHEET 3 OF 4



**CROSS-SECTION VIEW**

- Legend**
- GRIDLINES
  - - - EXISTING GRADE
  - PROPOSED GRADE



**RALEIGH EXECUTIVE JETPORT**

NORTH TERMINAL DEVELOPMENT  
 LEE COUNTY, N.C.  
 DATE: JULY 3, 2018  
 MONCURE 7.5' USGS TOPO  
 SHEET 4 OF 4