

Figure 1. Site Location Map

Mayo Plant
Section 404/401
Individual Permit Modification
Mayo CCP Monofill Site
Lined Retention Basin and
Ash Basin Closure
Person County, NC

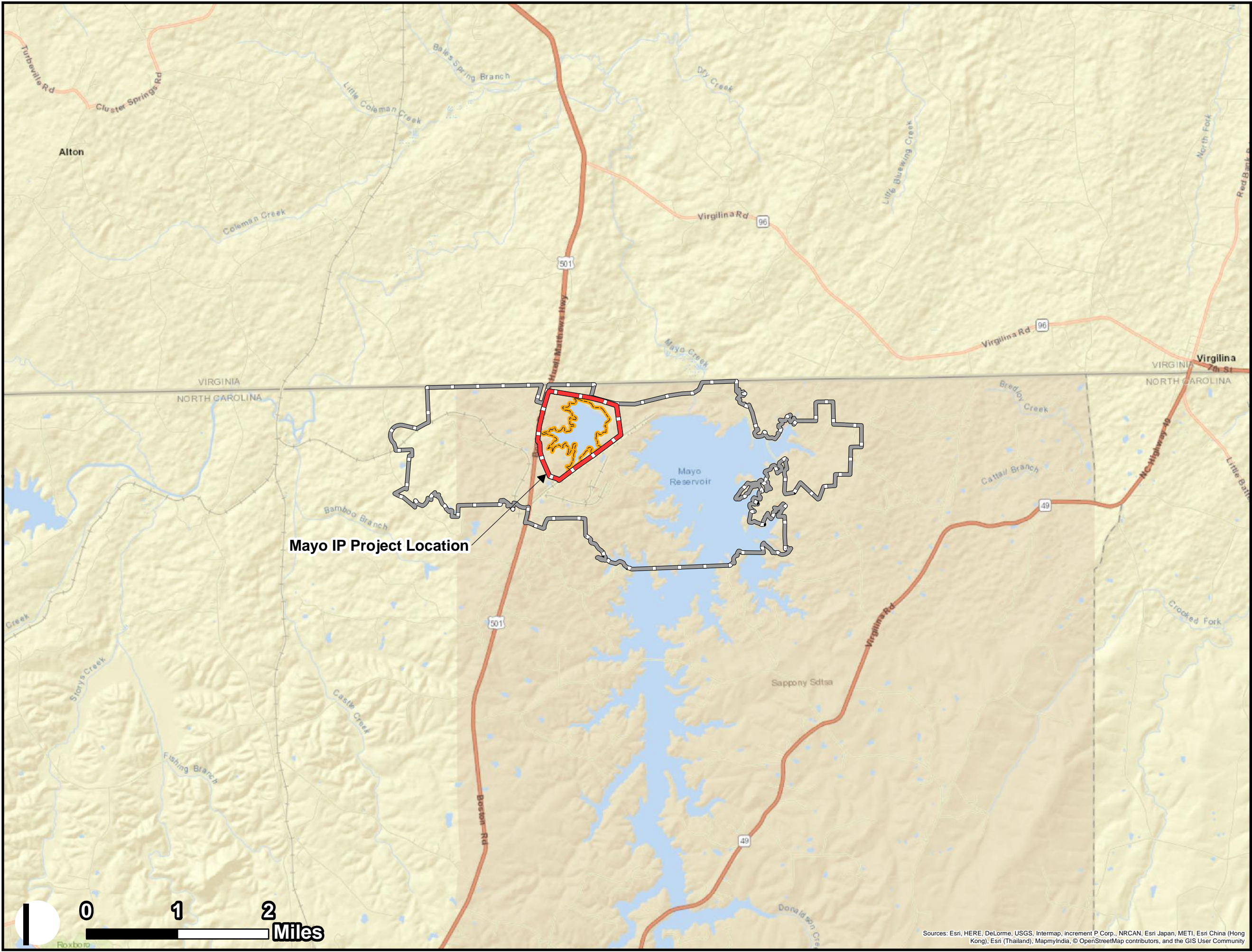
Legend

- Project Area
- Plant Boundary
- Ash Basin



Job No. 7810150300
Drawn By: JAH
Reviewed By: ---
Date: 7/23/2018

The map shown here has been created with all due and reasonable care and is strictly for use with Amec Foster Wheeler project number 7810150300. Amec Foster Wheeler assumes no liability, direct or indirect, whatsoever for any such third party or unintended use.



Sources: Esri, HERE, DeLorme, USGS, Intermap, increment P Corp., NRCAN, Esri Japan, METI, Esri China (Hong Kong), Esri (Thailand), MapmyIndia, © OpenStreetMap contributors, and the GIS User Community

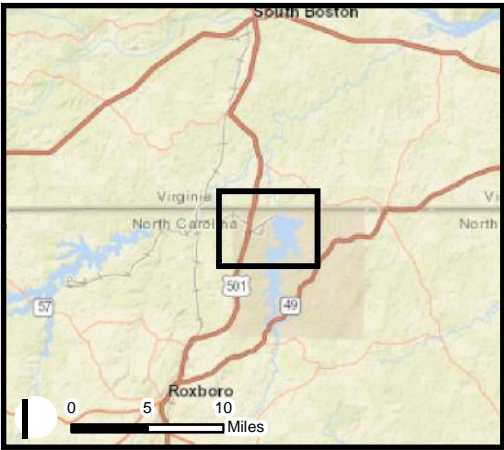

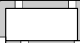



Figure 2. Site Aerial Map

Mayo Plant
Section 404/401
Individual Permit Modification
Mayo CCP Monofill Site
Lined Retention Basin and
Ash Basin Closure
Person County, NC

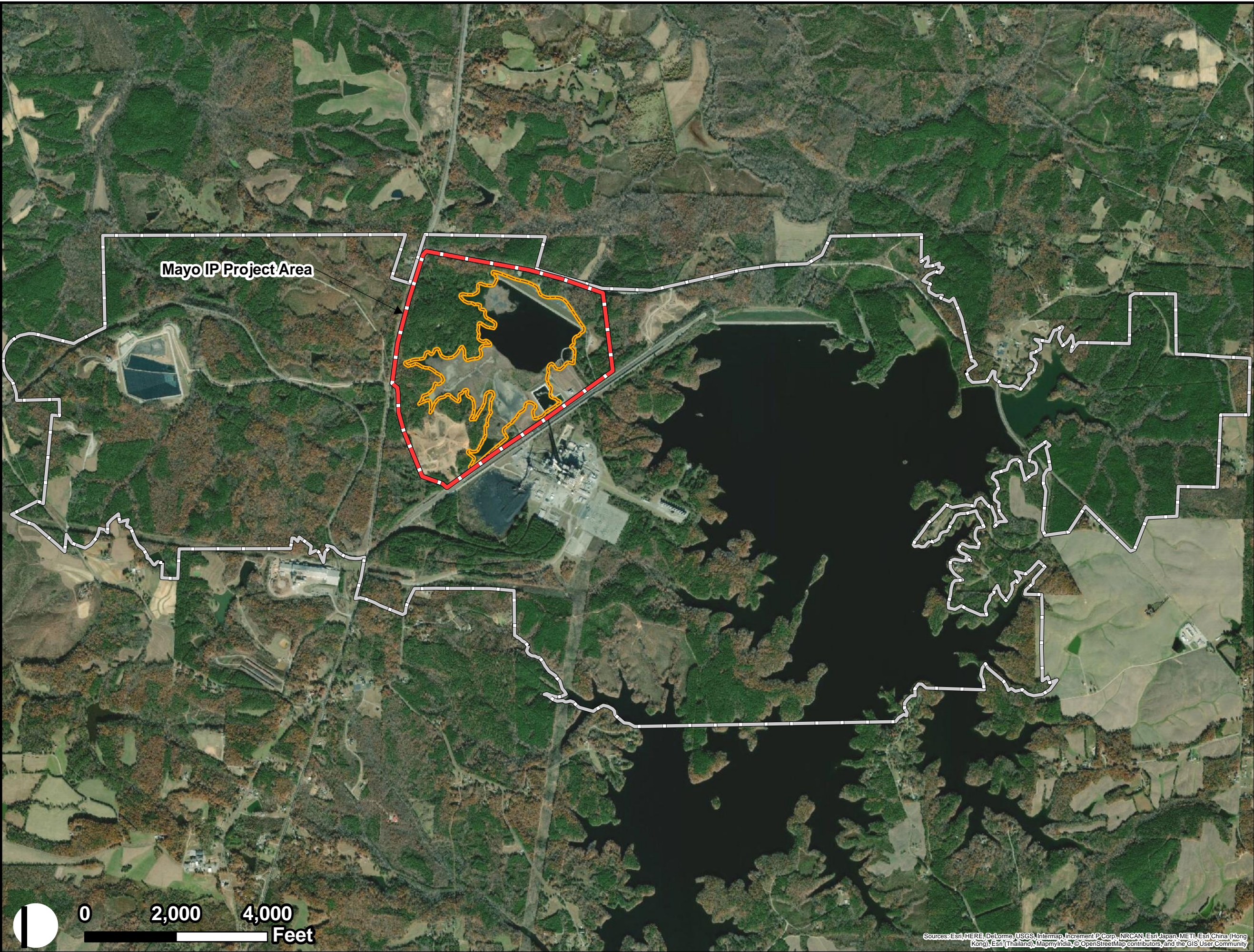
Legend

-  Project
-  Plant Boundary
-  Ash Basin



Job No. 7810150300
Drawn By: JAH
Reviewed By: ---
Date: 7/20/2018

The map shown here has been created with all due and reasonable care and is strictly for use with Amec Foster Wheeler project number 7810150300. Amec Foster Wheeler assumes no liability, direct or indirect, whatsoever for any such third party or unintended use.



Sources: Esri, HERE, DeLorme, USGS, Intermap, increment P Corp., NRCAN, Esri Japan, METI, Esri China (Hong Kong), Esri (Thailand), MapmyIndia, © OpenStreetMap contributors, and the GIS User Community

Energy Projects\2018\Mayo LRB Impacts_Ash Basin Closure IP Mod\GIS2_Aerial.mxd

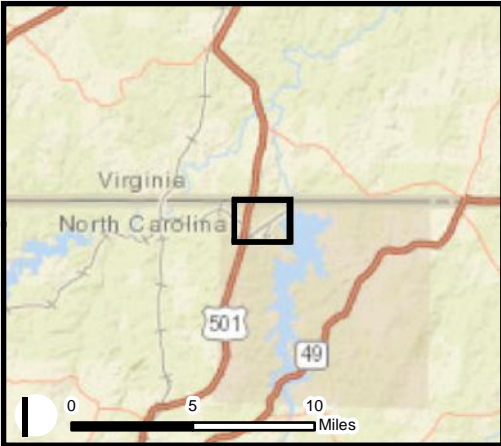


Figure 3. NRCS Soils Map

Mayo Plant
Section 404/401
Individual Permit Modification
Mayo CCP Monofill Site
Lined Retention Basin and
Ash Basin Closure
Person County, NC

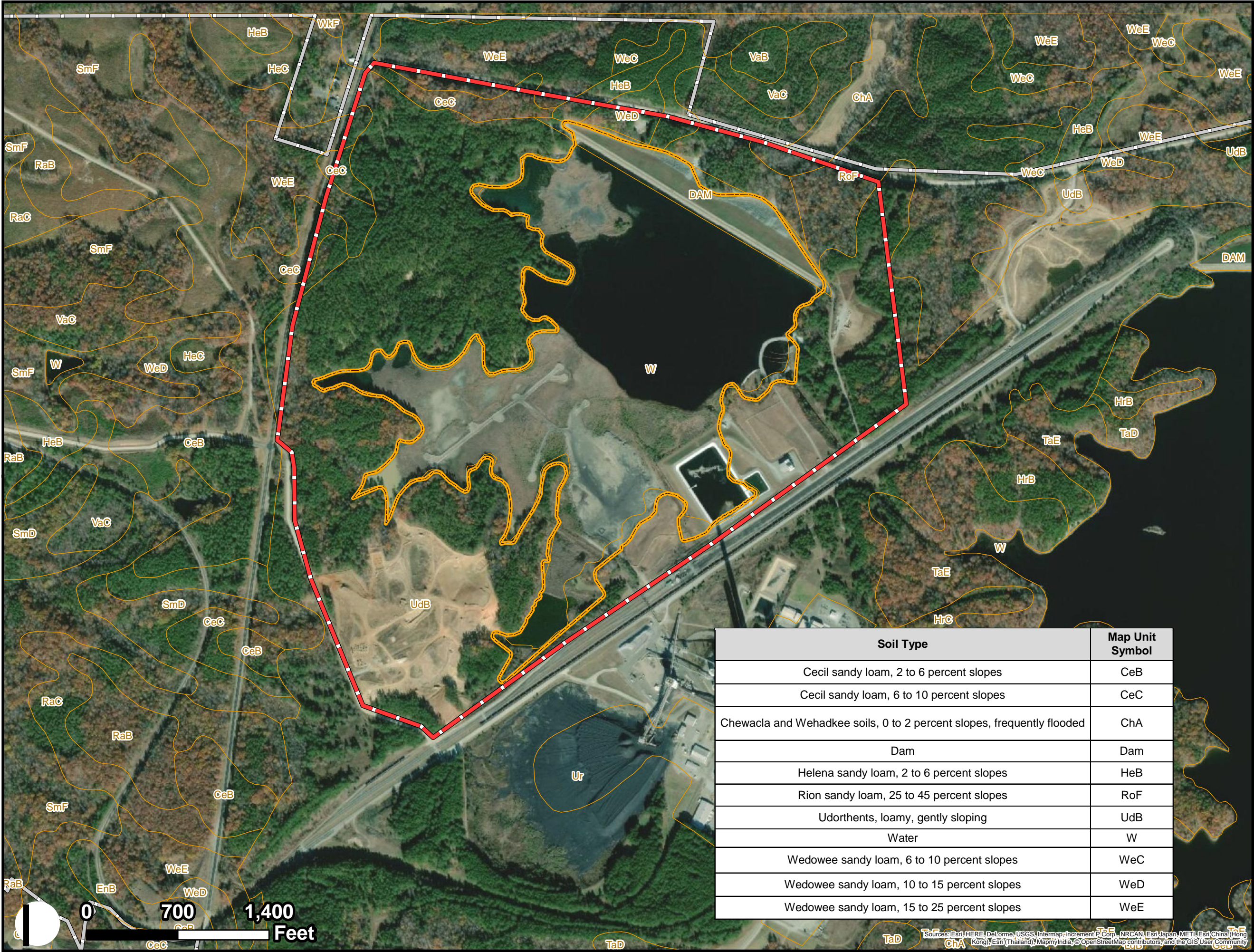
Legend

- Project Area
- Ash Basin
- Soils
- Plant Boundary



Job No. 7810150300
Drawn By: JAH
Reviewed By: ---
Date: 7/23/2018

The map shown here has been created with all due and reasonable care and is strictly for use with Amec Foster Wheeler project number 7810150300. Amec Foster Wheeler assumes no liability, direct or indirect, whatsoever for any such third party or unintended use.



Soil Type	Map Unit Symbol
Cecil sandy loam, 2 to 6 percent slopes	CeB
Cecil sandy loam, 6 to 10 percent slopes	CeC
Chewacla and Wehadkee soils, 0 to 2 percent slopes, frequently flooded	ChA
Dam	Dam
Helena sandy loam, 2 to 6 percent slopes	HeB
Rion sandy loam, 25 to 45 percent slopes	RoF
Udorthents, loamy, gently sloping	UdB
Water	W
Wedowee sandy loam, 6 to 10 percent slopes	WeC
Wedowee sandy loam, 10 to 15 percent slopes	WeD
Wedowee sandy loam, 15 to 25 percent slopes	WeE

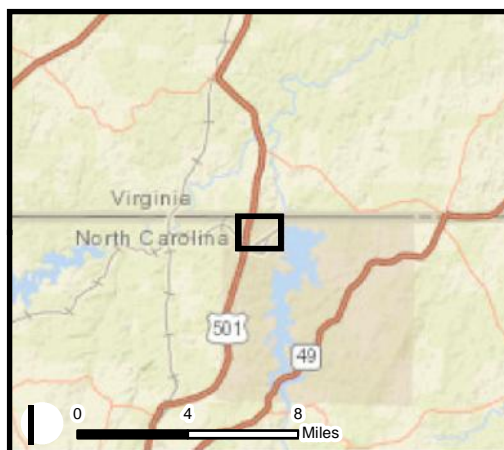


Figure 4.
Jurisdictional Waters Map

Mayo Plant
Section 404/401
Individual Permit Modification
Mayo CCP Monofill Site
Lined Retention Basin and
Ash Basin Closure
Person County, NC

Legend

-  Project Area
 Wetlands
 Streams
 Ash Basin
 Plant Boundary



Job No. 7810150300

Drawn By: JAH

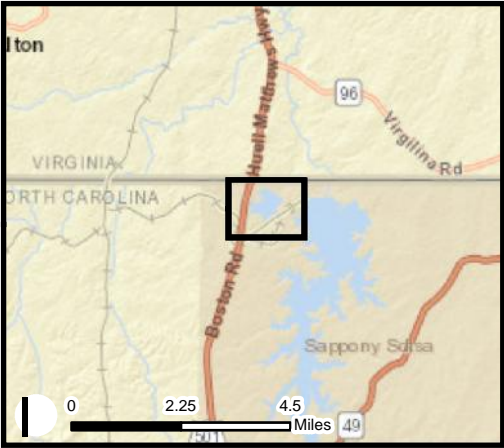
Reviewed By: ---

Date: 7/23/2018

The map shown here has been created with all due and reasonable care and is strictly for use with Amec Foster Wheeler project number 7810150300. Amec Foster Wheeler assumes no liability, direct or indirect, whatsoever for any such third party or unintended use.



Sources: Esri, HERE, DeLorme, USGS, Intermap, increment P Corp., NRCAN, Esri Japan, METI, Esri China (Hong Kong), Esri (Thailand), MapmyIndia, © OpenStreetMap contributors, and the GIS User Community



**Figure 5. USGS
Topographic Map**

Mayo Plant
Section 404/401
Individual Permit Modification
Mayo CCP Monofill Site
Lined Retention Basin and
Ash Basin Closure
Person County, NC

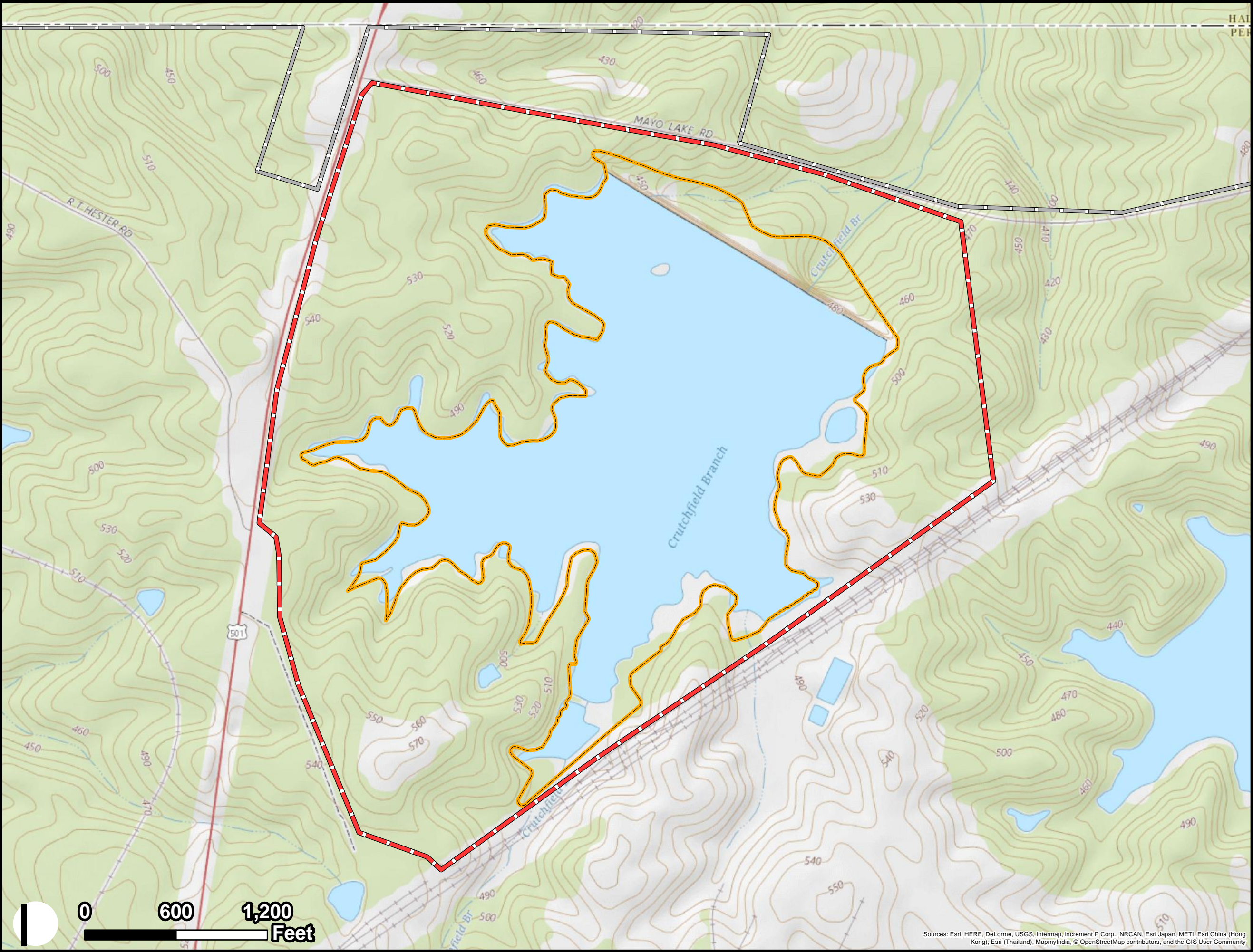
Legend

- Project
- Plant Boundary
- Ash Basin



Job No. 7810150300
Drawn By: JAH
Reviewed By: ---
Date: 7/20/2018

The map shown here has been created with all due and reasonable care and is strictly for use with Amec Foster Wheeler project number 7810150300. Amec Foster Wheeler assumes no liability, direct or indirect, whatsoever for any such third party or unintended use.



Sources: Esri, HERE, DeLorme, USGS, Intermap, increment P Corp., NRCAN, Esri Japan, METI, Esri China (Hong Kong), Esri (Thailand), MapmyIndia, © OpenStreetMap contributors, and the GIS User Community

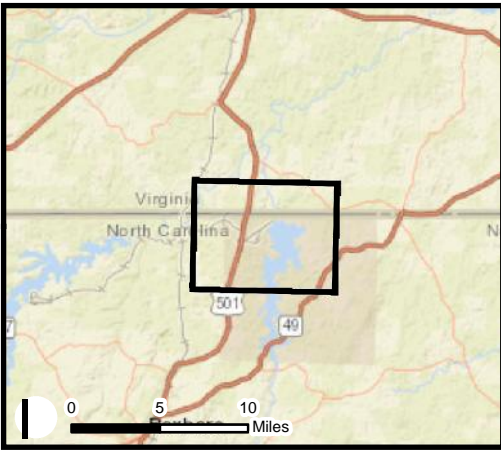


Figure 7. Cultural Resources Map

Mayo Plant
Section 404/401
Individual Permit Modification
Mayo CCP Monofill Site
Lined Retention Basin and
Ash Basin Closure
Person County, NC

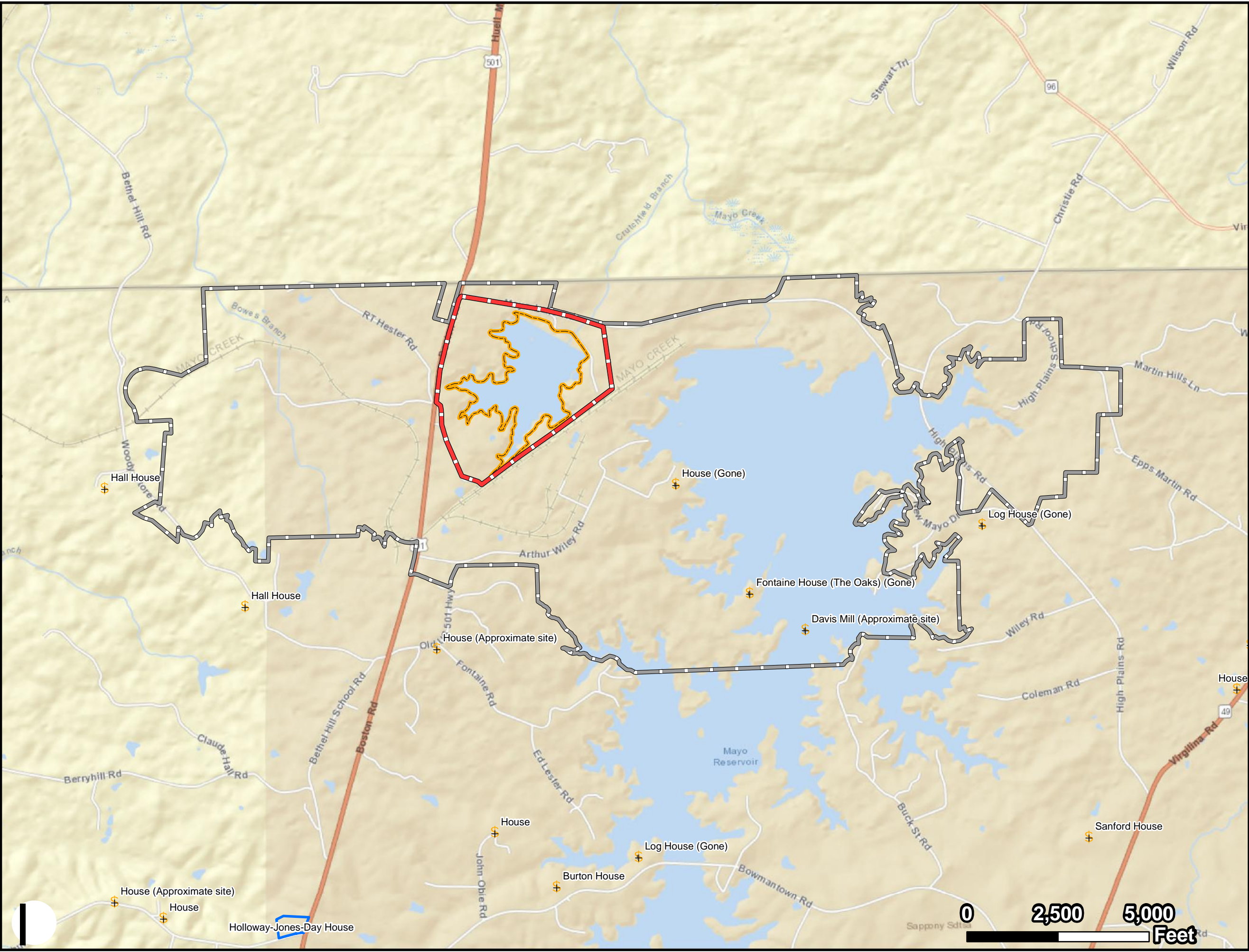
Legend

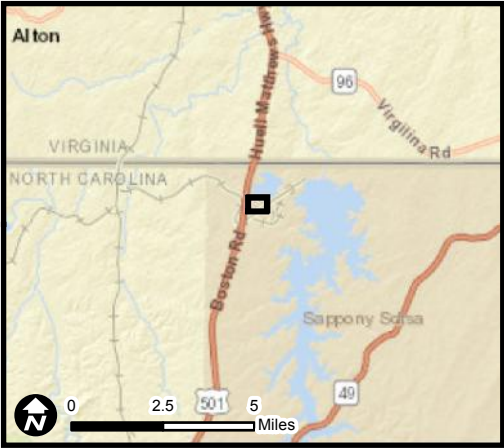
- Project Area
- Plant Boundary
- Ash Basin
- Surveyed & Destroyed/Removed
- Surveyed NCSHPO Location
- National Register NCSHPO



Job No. 7810150300
Drawn By: JAH
Reviewed By: ---
Date: 7/20/2018

The map shown here has been created with all due and reasonable care and is strictly for use with Amec Foster Wheeler project number 7810150300. Amec Foster Wheeler assumes no liability, direct or indirect, whatsoever for any such third party or unintended use.





Mayo Plan View

Mayo Plant
Section 404/401
Individual Permit Modification
Mayo CCP Monofill Site
Lined Retention Basin and
Ash Basin Closure
Person County, NC

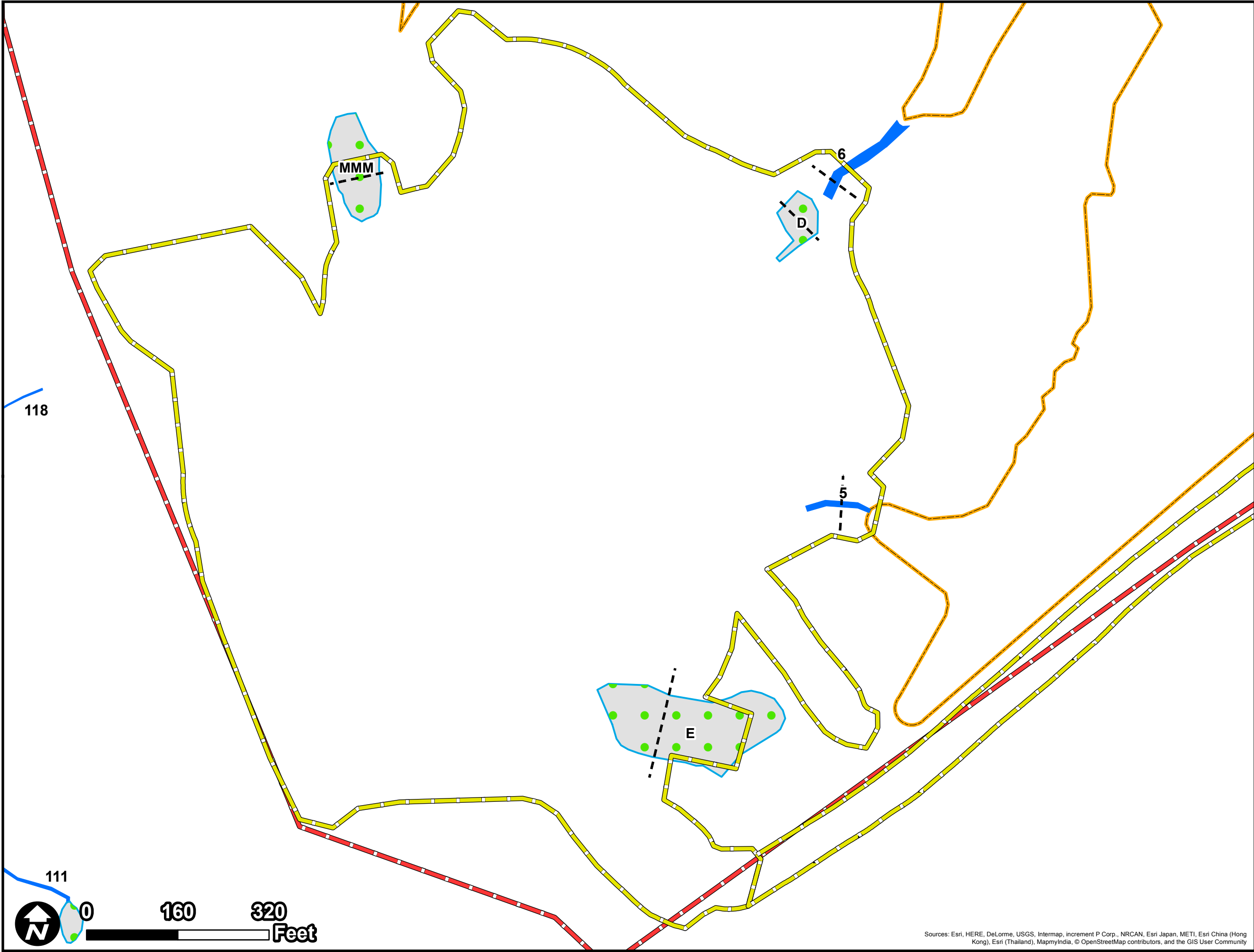
Legend

- Cross Section (XS)
- LOD
- Wetland
- Stream
- Project Area
- Plant Boundary
- Ash Basin

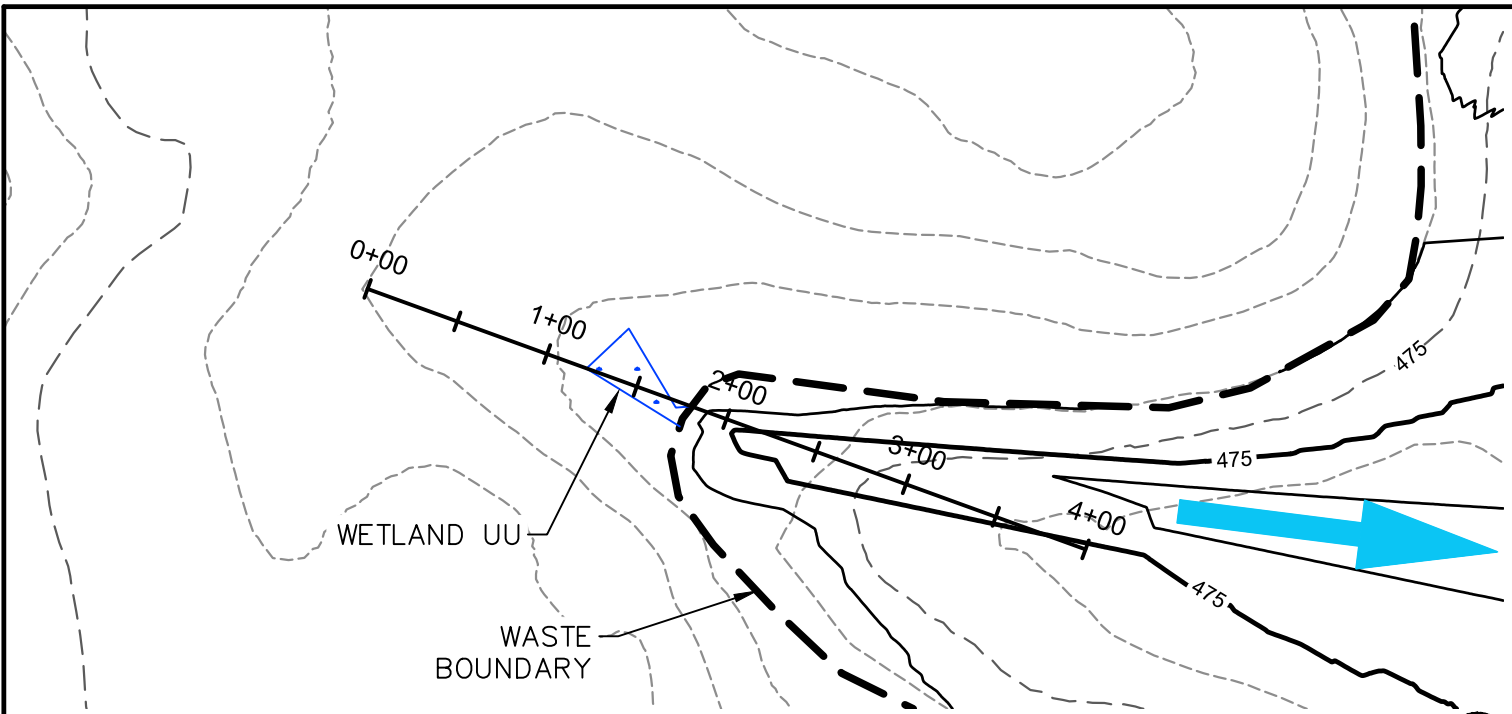


Job No. 7810150300
Drawn By: JAH
Reviewed By: ---
Date: 7/20/2018

The map shown here has been created with all due and reasonable care and is strictly for use with Amec Foster Wheeler project number 7810150300. Amec Foster Wheeler assumes no liability, direct or indirect, whatsoever for any such third party or unintended use.

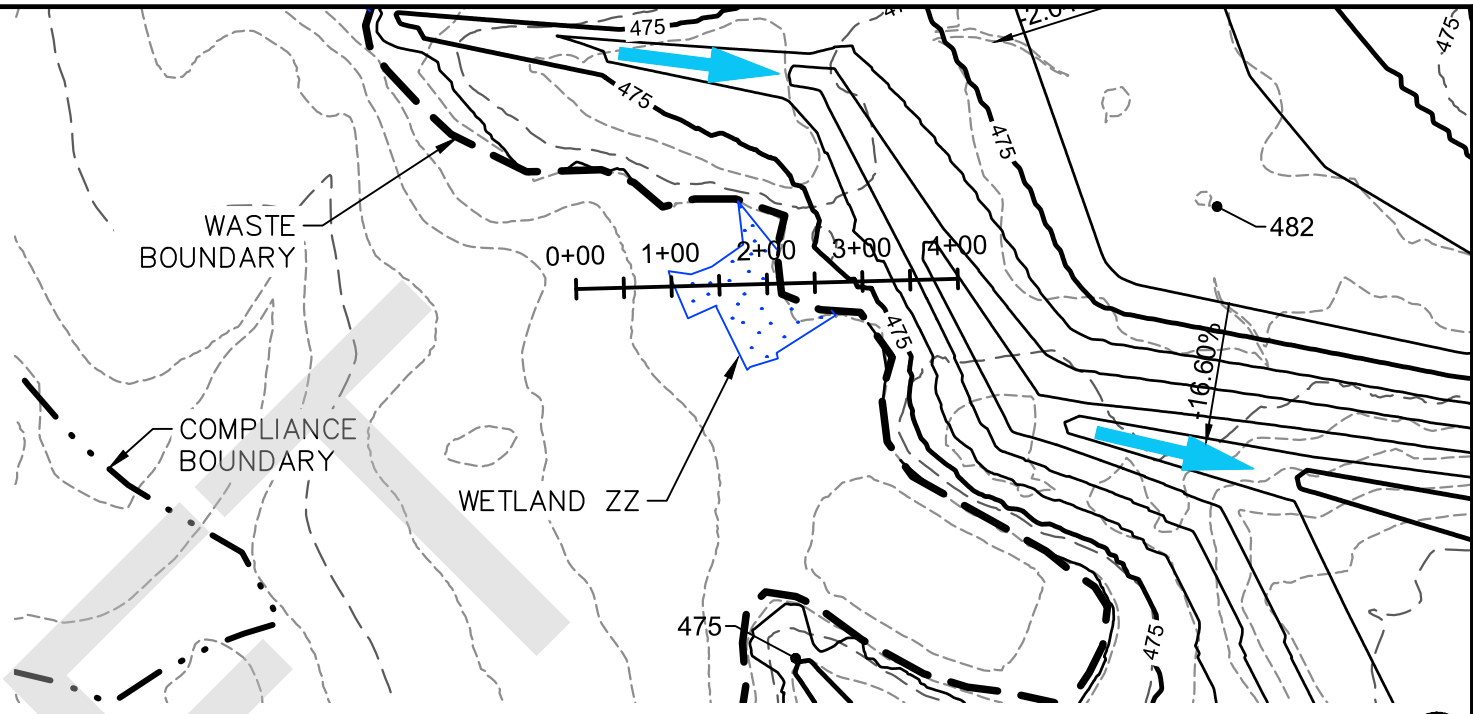


Sources: Esri, HERE, DeLorme, USGS, Intermap, increment P Corp., NRCAN, Esri Japan, METI, Esri China (Hong Kong), Esri (Thailand), MapmyIndia, © OpenStreetMap contributors, and the GIS User Community



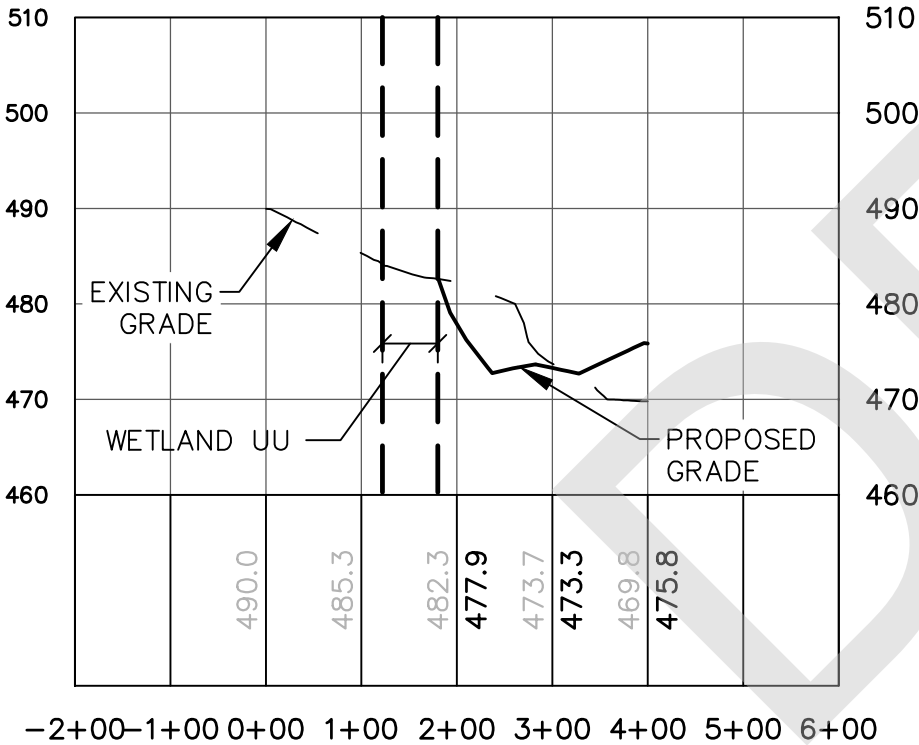
WETLAND UU - PLAN

SCALE=1"=100'

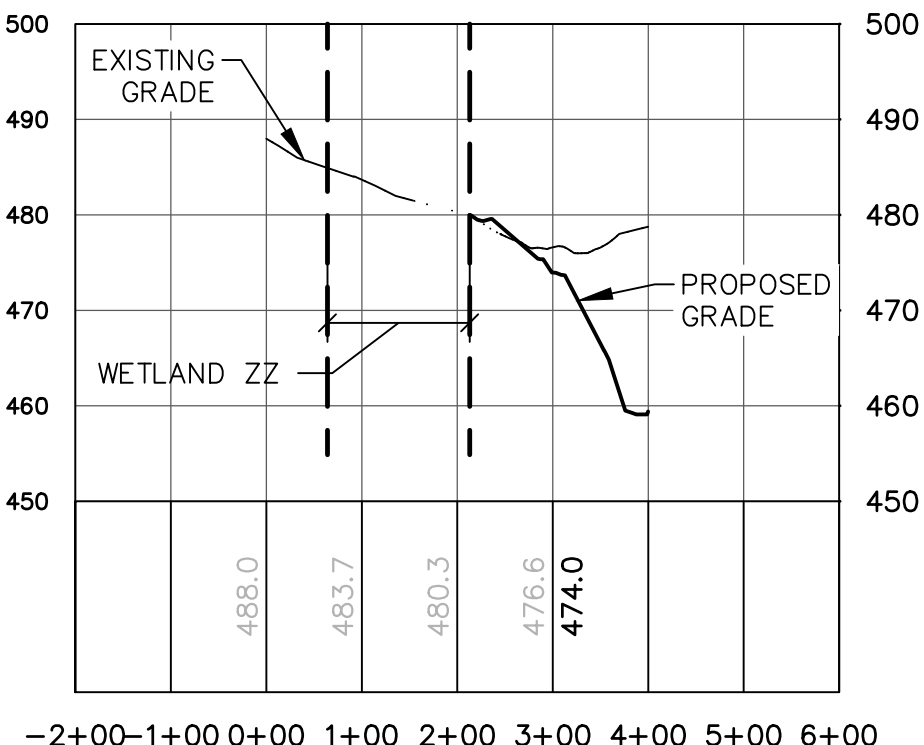


WETLAND ZZ - PLAN

SCALE=1"=200'



WETLAND UU - PROFILE



WETLAND ZZ - PROFILE

PROFILE SCALE: H: 1"=200'
V: 1"=20'



PROJECT MAYO CAMA ASH POND CLOSURE
SUBJECT ALTERNATIVE A - WETLAND IMPACT EXHIBITS

JOB NO. 60576646
DATE 07/24/2018
DRAWN BY RD
FIGURE NO. 5 OF 5

DRAFT - FOR DISCUSSION ONLY