



05001,000

Feet

1 inch = 500 feet





Alternative 1

 Proposed Edge of Travel

 Jurisdictional Stream

 Jurisdictional Wetland

 Slope Stakes Plus 25 Feet

 Impacted Stream

 Impacted Wetland

FIGURE 3.1

STREAM AND WETLAND

IMPACT MAP

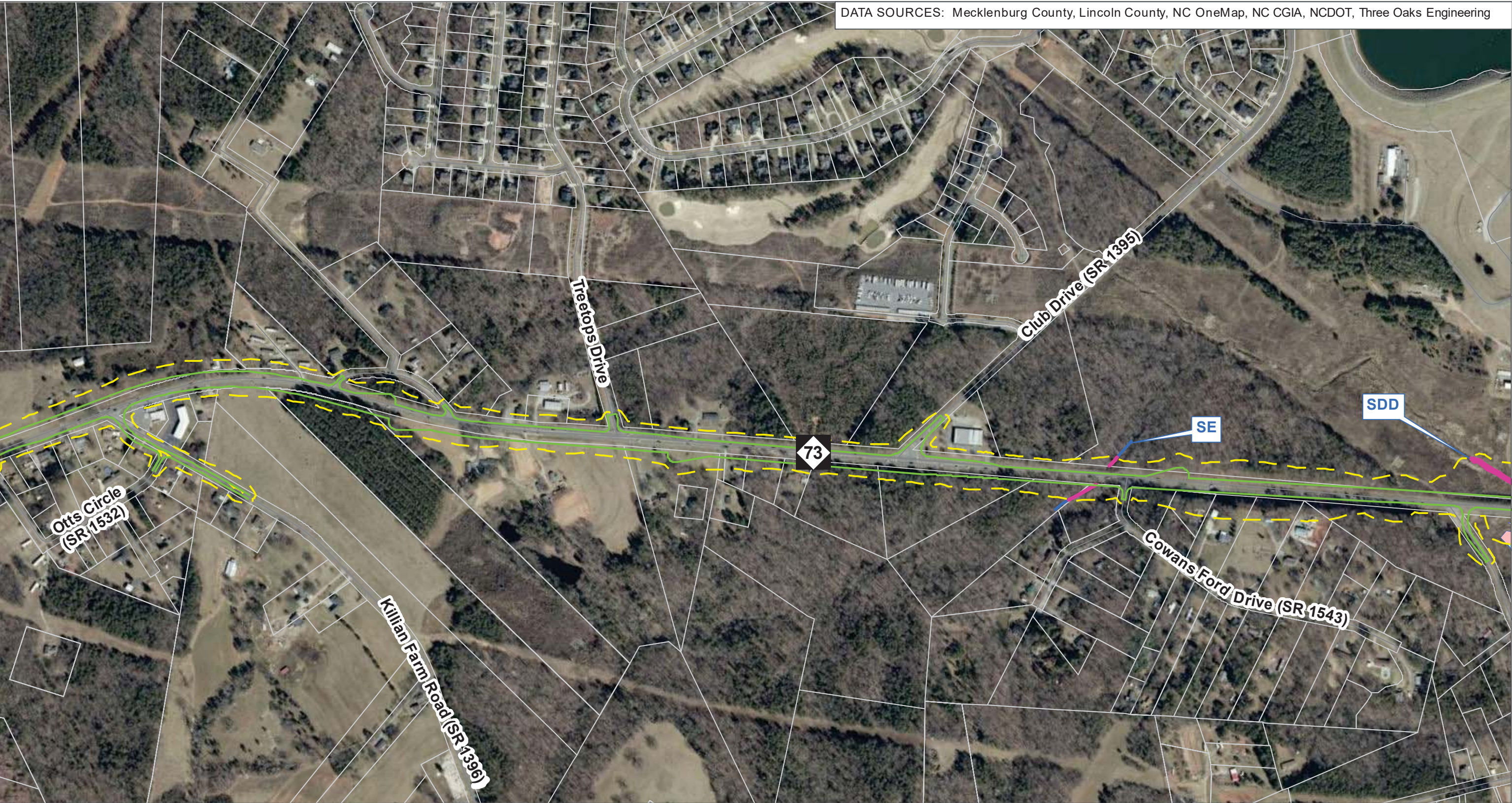
STIP R-5721 & U-5765


NC 16 TO NORTHCROSS DRIVE

LINCOLN & MECKLENBURG

COUNTIES

NOVEMBER 2018







05001,000

Feet

1 inch = 500 feet





Lincoln County

Mecklenburg County

Alternative 1

Proposed Edge of Travel

Slope Stakes Plus 25 Feet

Jurisdictional Stream

Impacted Stream

Jurisdictional Wetland

Impacted Wetland

FIGURE 3.2

STREAM AND WETLAND

IMPACT MAP

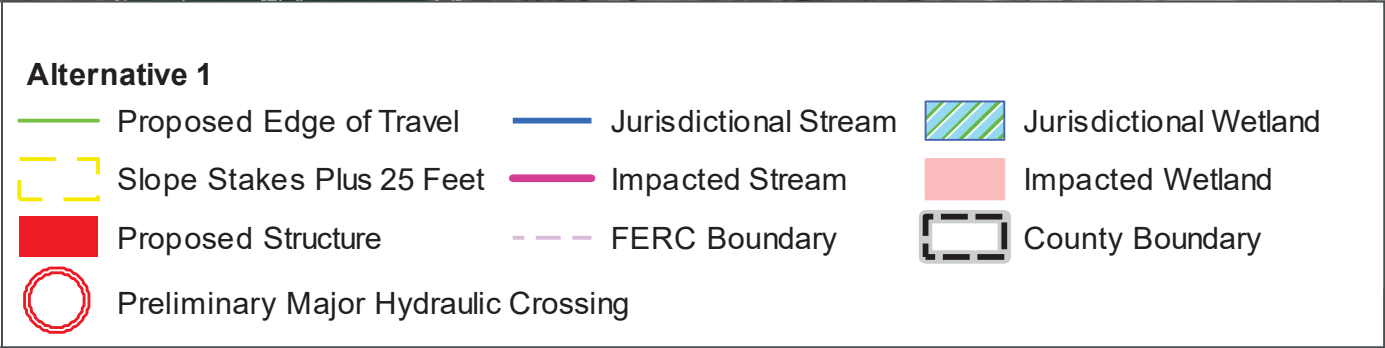
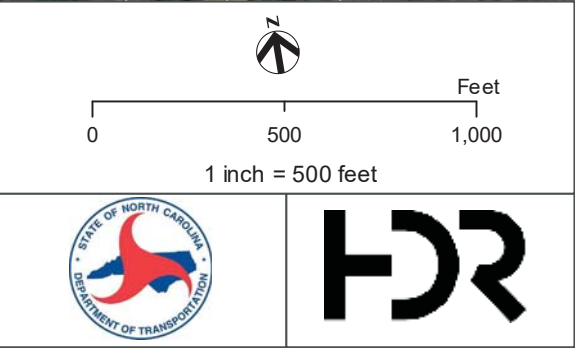
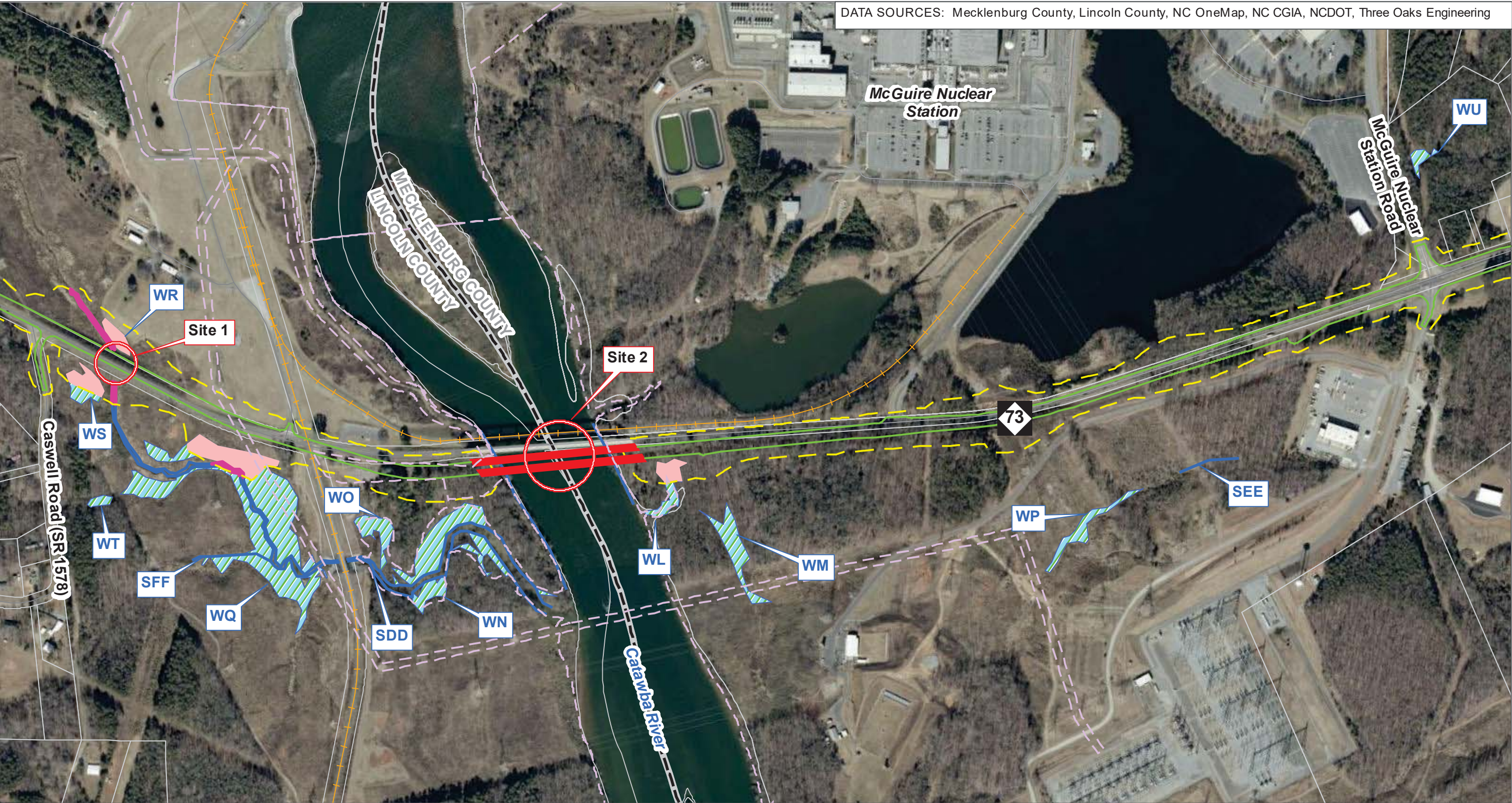
STIP R-5721 & U-5765

NC 16 TO NORTHCROSS DRIVE

LINCOLN & MECKLENBURG

COUNTIES

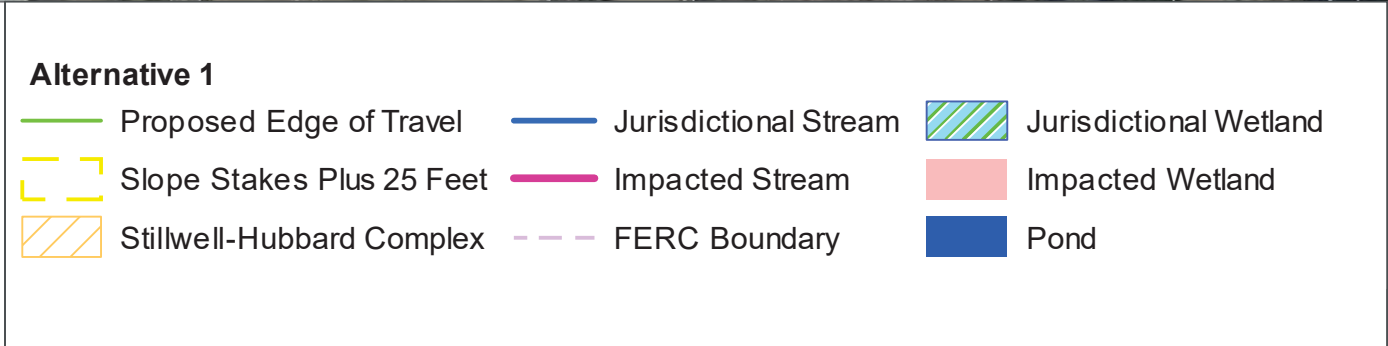
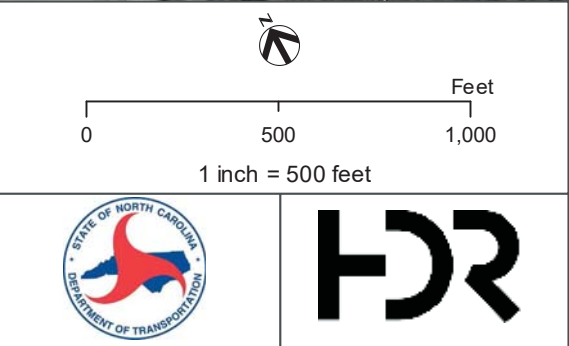
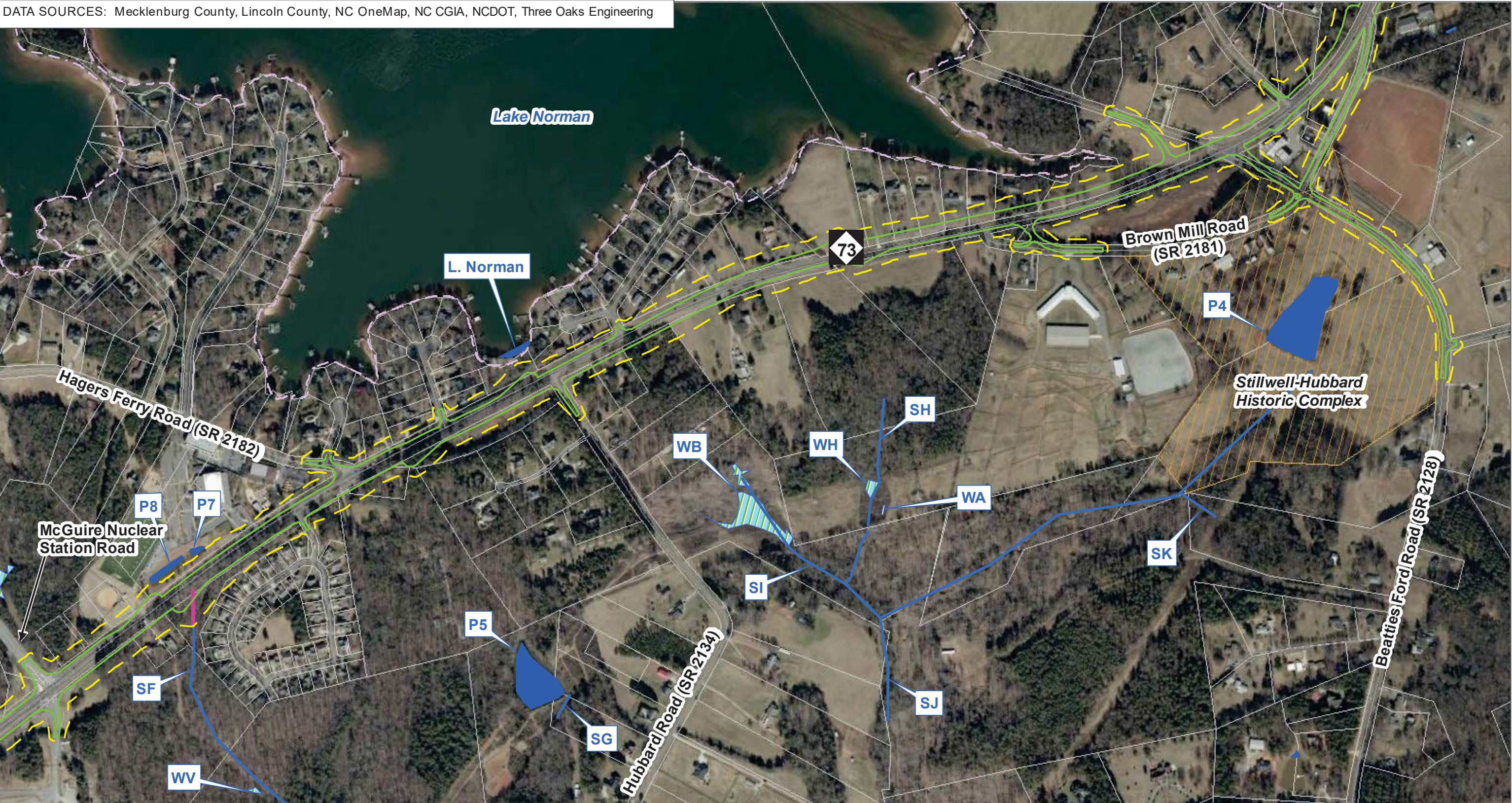
NOVEMBER 2018



**FIGURE 3.3
STREAM AND WETLAND
IMPACT MAP**

STIP R-5721 & U-5765
NC 16 TO NORTHCROSS DRIVE
LINCOLN & MECKLENBURG
COUNTIES

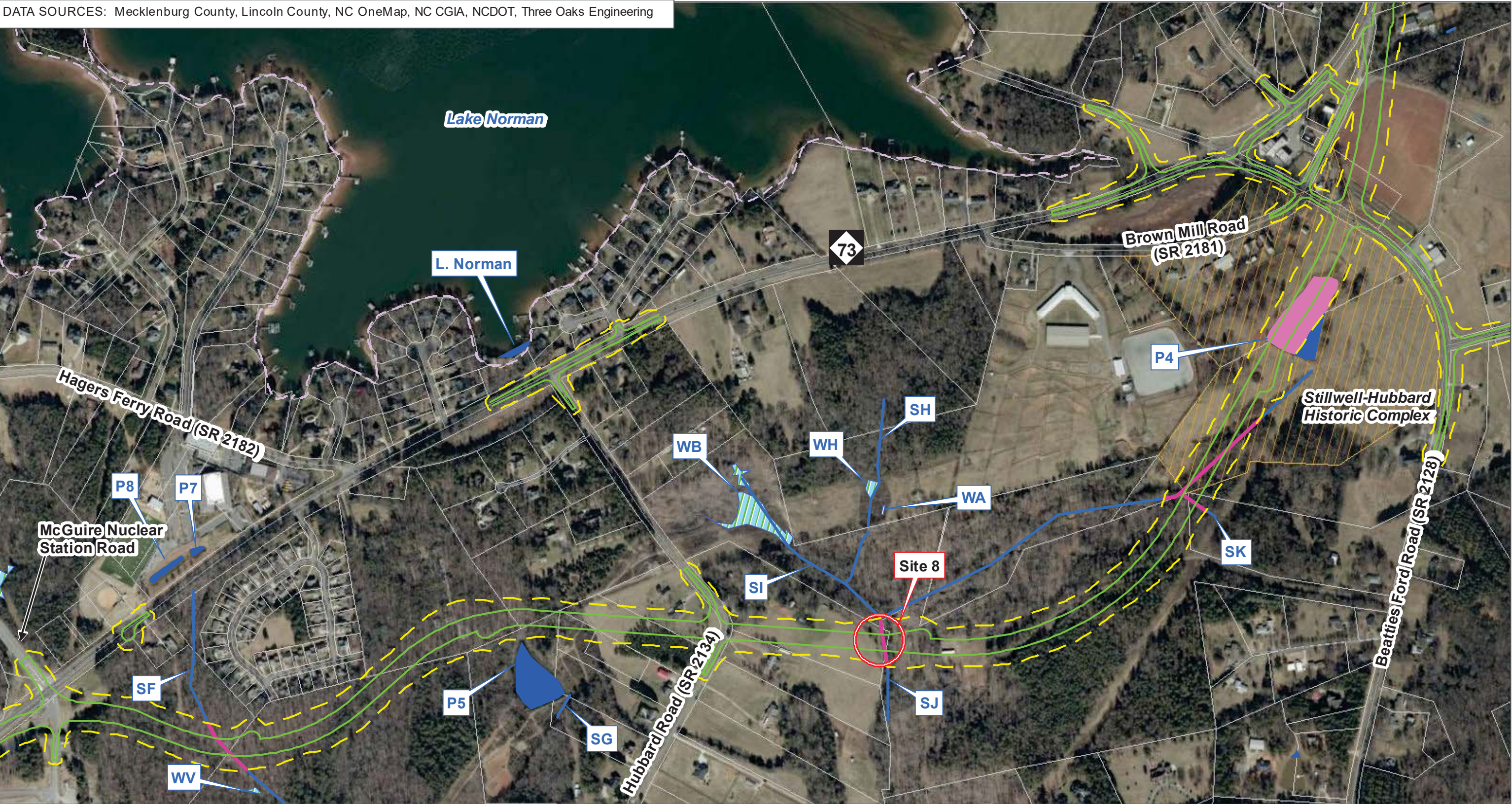
NOVEMBER 2018



**FIGURE 3.4
STREAM AND WETLAND
IMPACT MAP**

STIP R-5721 & U-5765
NC 16 TO NORTHCROSS DRIVE
LINCOLN & MECKLENBURG
COUNTIES

NOVEMBER 2018



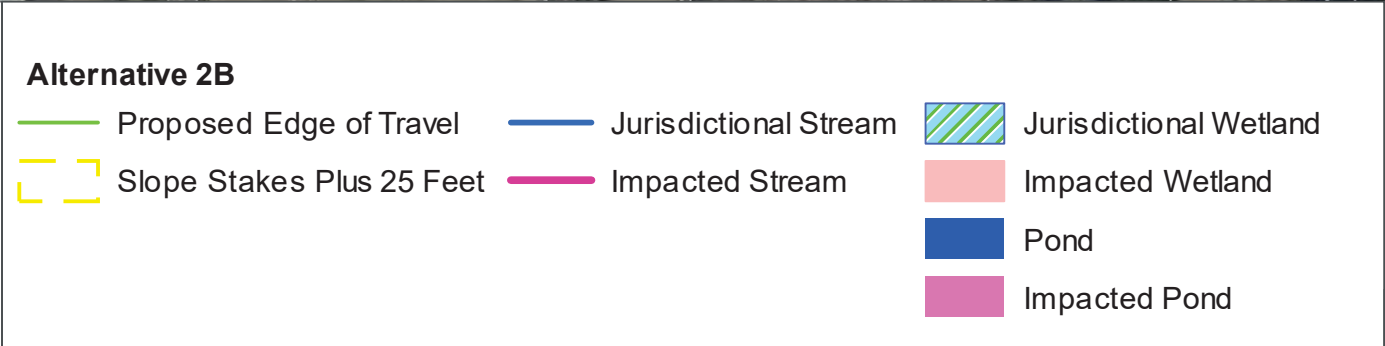
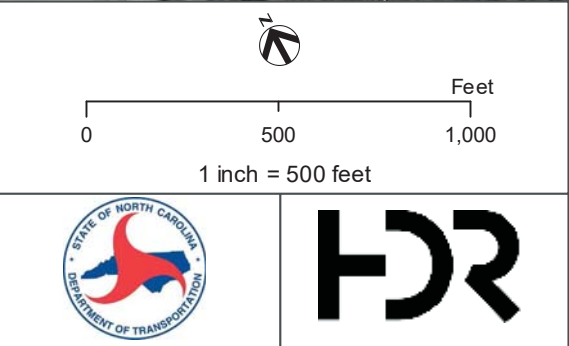
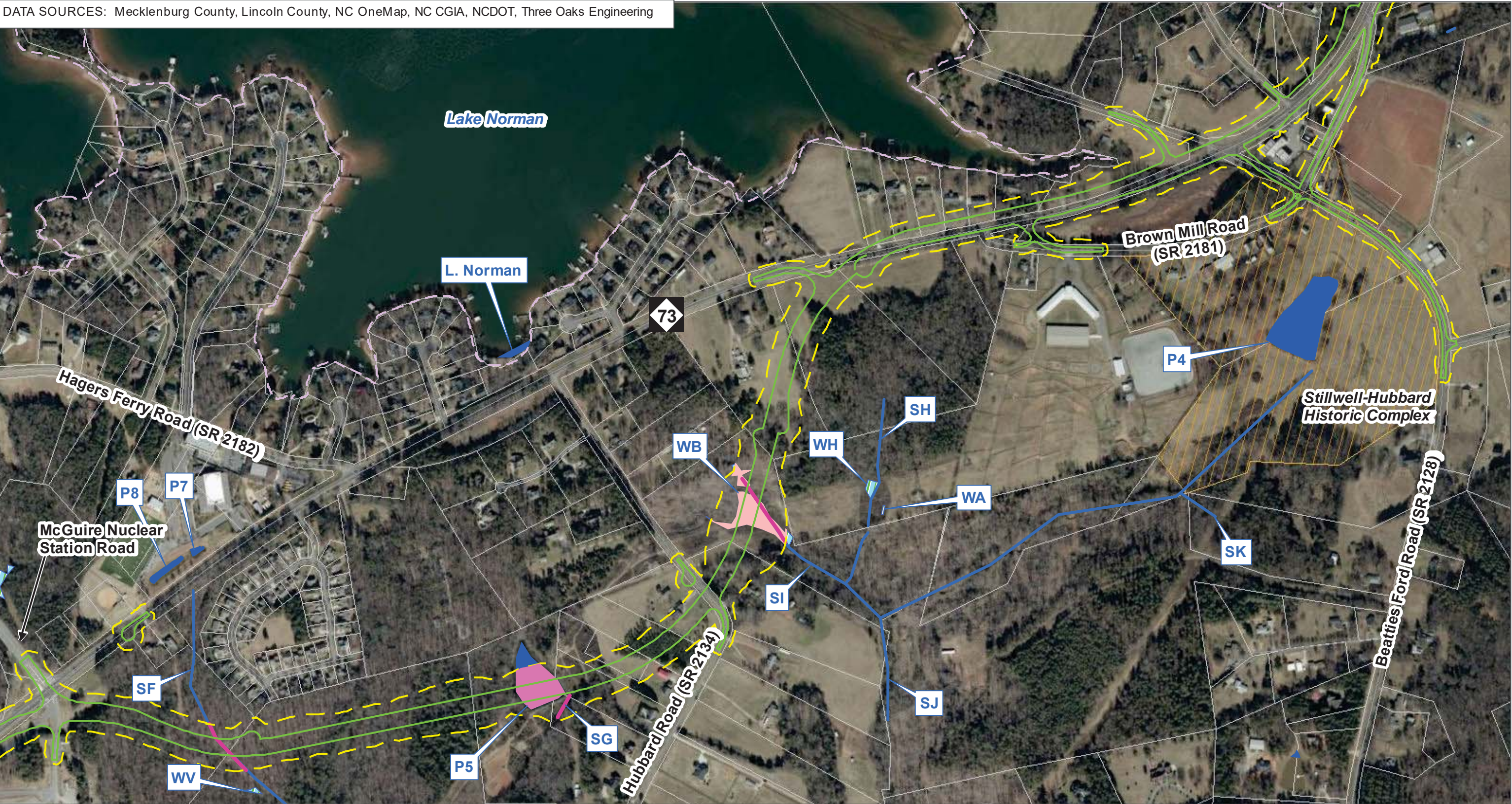
Alternative 2A

- Proposed Edge of Travel
- Slope Stakes Plus 25 Feet
- Preliminary Major Hydraulic Crossing
- Jurisdictional Stream
- Impacted Stream
- Jurisdictional Wetland
- Impacted Wetland
- Pond
- Impacted Pond

FIGURE 3.5
STREAM AND WETLAND
IMPACT MAP

STIP R-5721 & U-5765
NC 16 TO NORTHCROSS DRIVE
LINCOLN & MECKLENBURG
COUNTIES

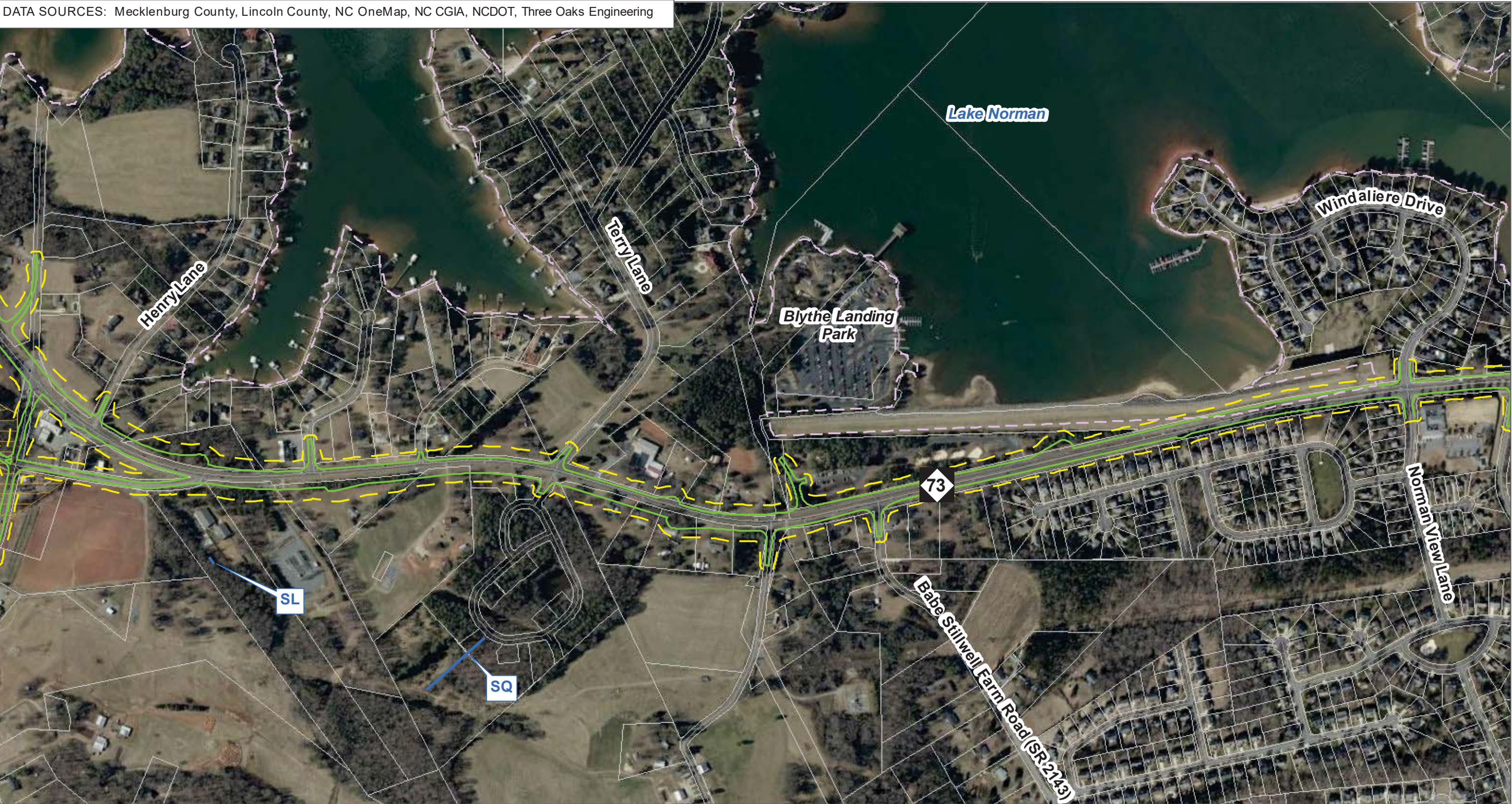
NOVEMBER 2018



**FIGURE 3.6
STREAM AND WETLAND
IMPACT MAP**

STIP R-5721 & U-5765
NC 16 TO NORTHCROSS DRIVE
LINCOLN & MECKLENBURG
COUNTIES

NOVEMBER 2018



0 500 1,000 Feet
1 inch = 500 feet

Lincoln County
Mecklenburg County

Alternative 1

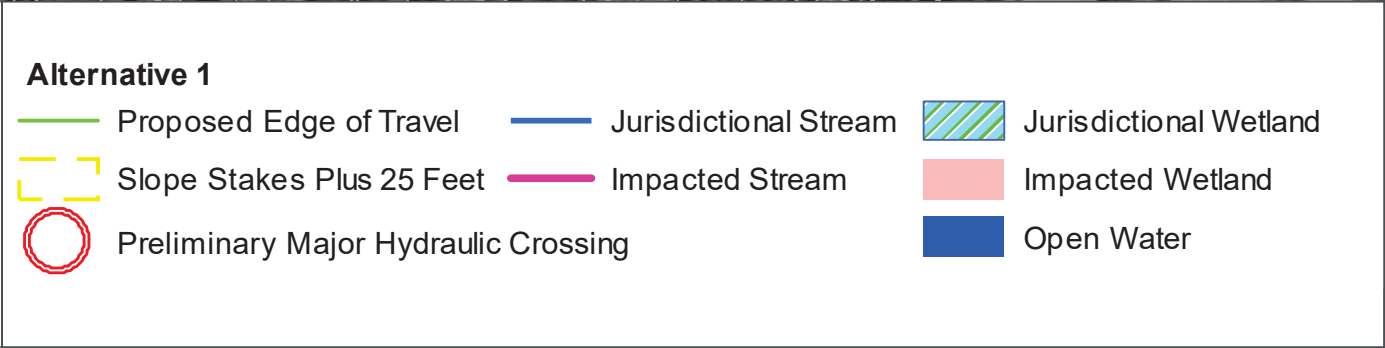
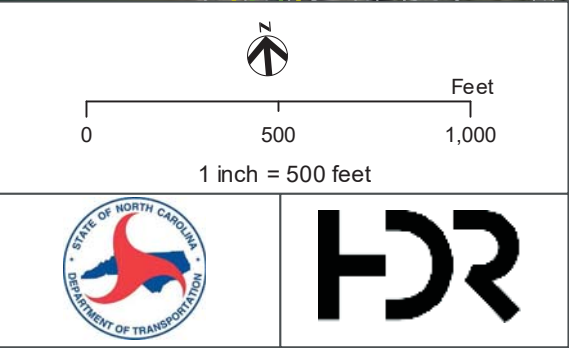
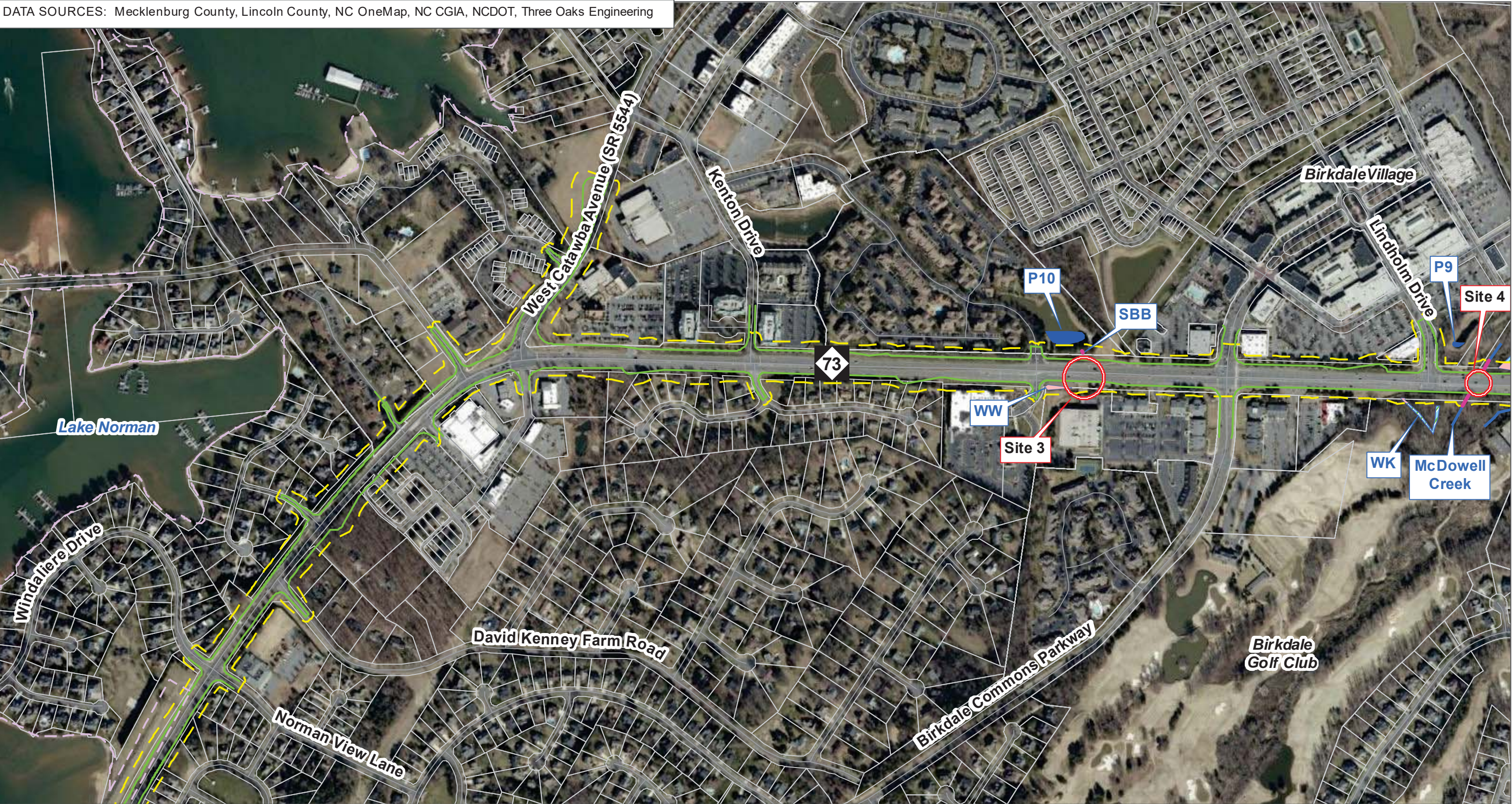
Proposed Edge of Travel	Jurisdictional Stream	Jurisdictional Wetland
Slope Stakes Plus 25 Feet	Impacted Stream	Impacted Wetland
Stillwell-Hubbard Complex	FERC Boundary	

**FIGURE 3.7
STREAM AND WETLAND
IMPACT MAP**

STIP R-5721 & U-5765
NC 16 TO NORTHCROSS DRIVE
LINCOLN & MECKLENBURG
COUNTIES

NOVEMBER 2018

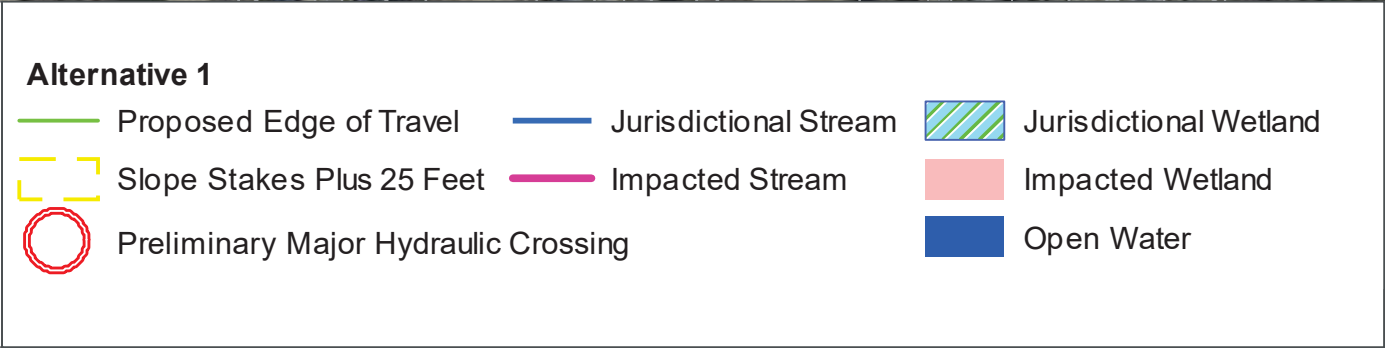
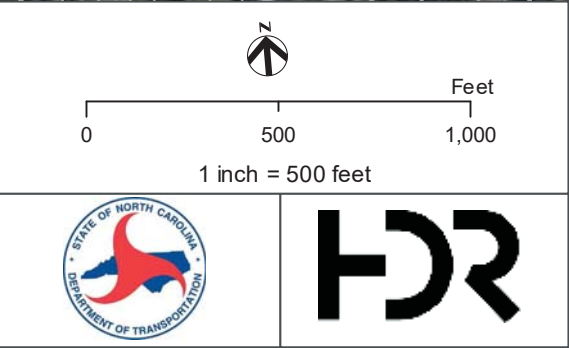
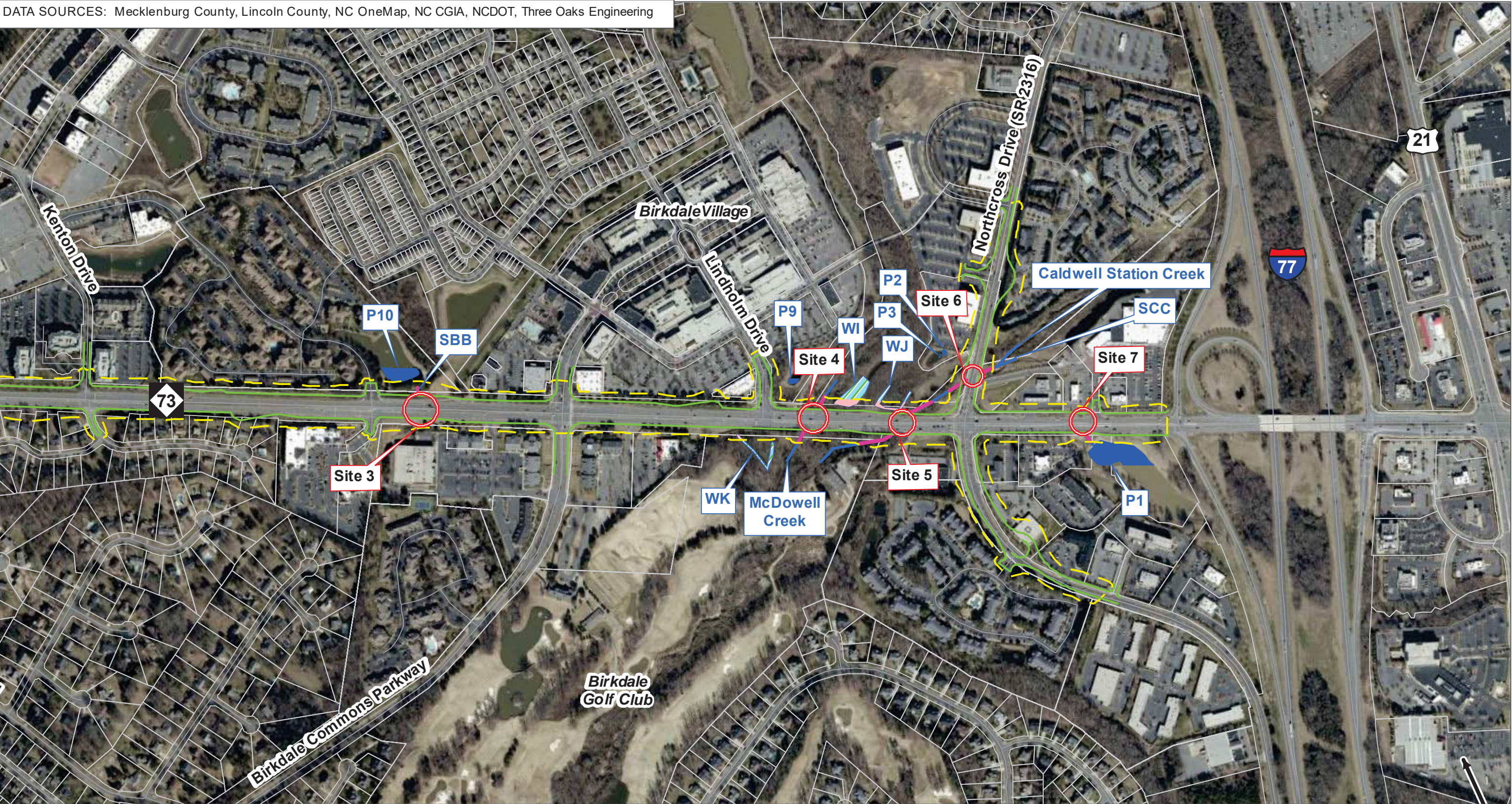




**FIGURE 3.8
STREAM AND WETLAND
IMPACT MAP**

STIP R-5721 & U-5765
NC 16 TO NORTHCROSS DRIVE
LINCOLN & MECKLENBURG
COUNTIES

NOVEMBER 2018



**FIGURE 3.9
STREAM AND WETLAND
IMPACT MAP**

STIP R-5721 & U-5765
NC 16 TO NORTHCROSS DRIVE
LINCOLN & MECKLENBURG
COUNTIES

NOVEMBER 2018