

Drawing 1

USGS Topographic Map
Lexington West and Southmont
NC Quadrangles
Scale: 1" = 2,000'



USGS Topographic Map

Proposed Fulfillment Center
Approximate 92-Acre Tract
Belmont Road, Davidson County, NC
Pilot Project 1595.5



Drawing 2
USDA Web Soil Survey
of Davidson County NC
Scale: 1" = 400'



Web Soil Map
Proposed Fulfillment Center
Approximate 92-Acre Tract
Belmont Road, Davidson County, NC
Pilot Project 1595.5



Drawing 5

Satellite Imagery from ESRI
and Pilot GPS Data
Scale: 1" = 400'
Date: 10.11.21



Wetland Map

I-85 Corporate Center
Approximate 92-Acre Tract
Belmont Road, Davidson County, NC
Pilot Project 1595.5



GRAPHIC SCALE IN FEET



BOTTOMLESS ARCH CULVERT
DESIGNED BY OTHERS

ENVIRONMENTAL IMPACTS

STREAM IMPACT	0.06 ACRES (2,614 SF) 230 LF
WETLAND IMPACT	0.014 ACRES (610 SF)

PROPOSED LANDSCAPE
BUFFER. 1 CANOPY TREE,
4 UNDERSTORY TREES,
5 EVERGREEN TREES
EVERY 100 LF

BUILDING FOOTPRINT± 1,080,225 SF (INCLUDING 36,241 OFFICE SPACE)
MEZZANINE FOOTPRINT±250,028 SF
98 LOADING DOCKS
432 TRAILER PARKING STALLS
1253 CAR PARKING STALLS

PROJECT DOGWOOD -ON-SITE ALTERNATIVE 2

DATE: 12-02-2021

SHEET 1 of 3

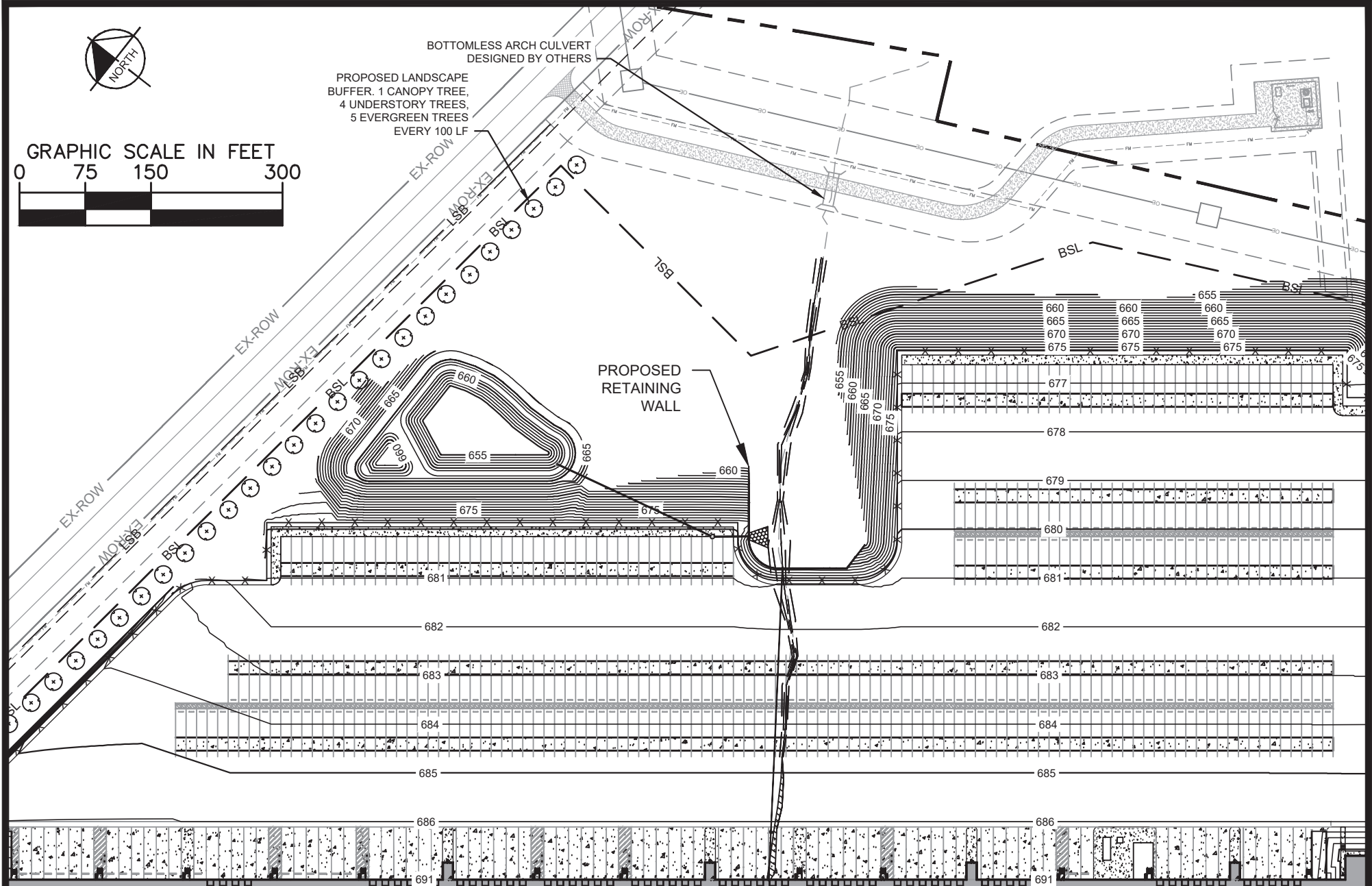
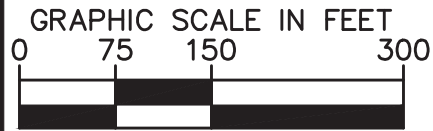
Kimley»Horn

NC LICENSE #F-0102 ©2021
200 SOUTH TRYON STREET, SUITE 200
CHARLOTTE, NORTH CAROLINA 28202
PHONE 704-333-5131



BOTTOMLESS ARCH CULVERT
DESIGNED BY OTHERS

PROPOSED LANDSCAPE
BUFFER. 1 CANOPY TREE,
4 UNDERSTORY TREES,
5 EVERGREEN TREES
EVERY 100 LF



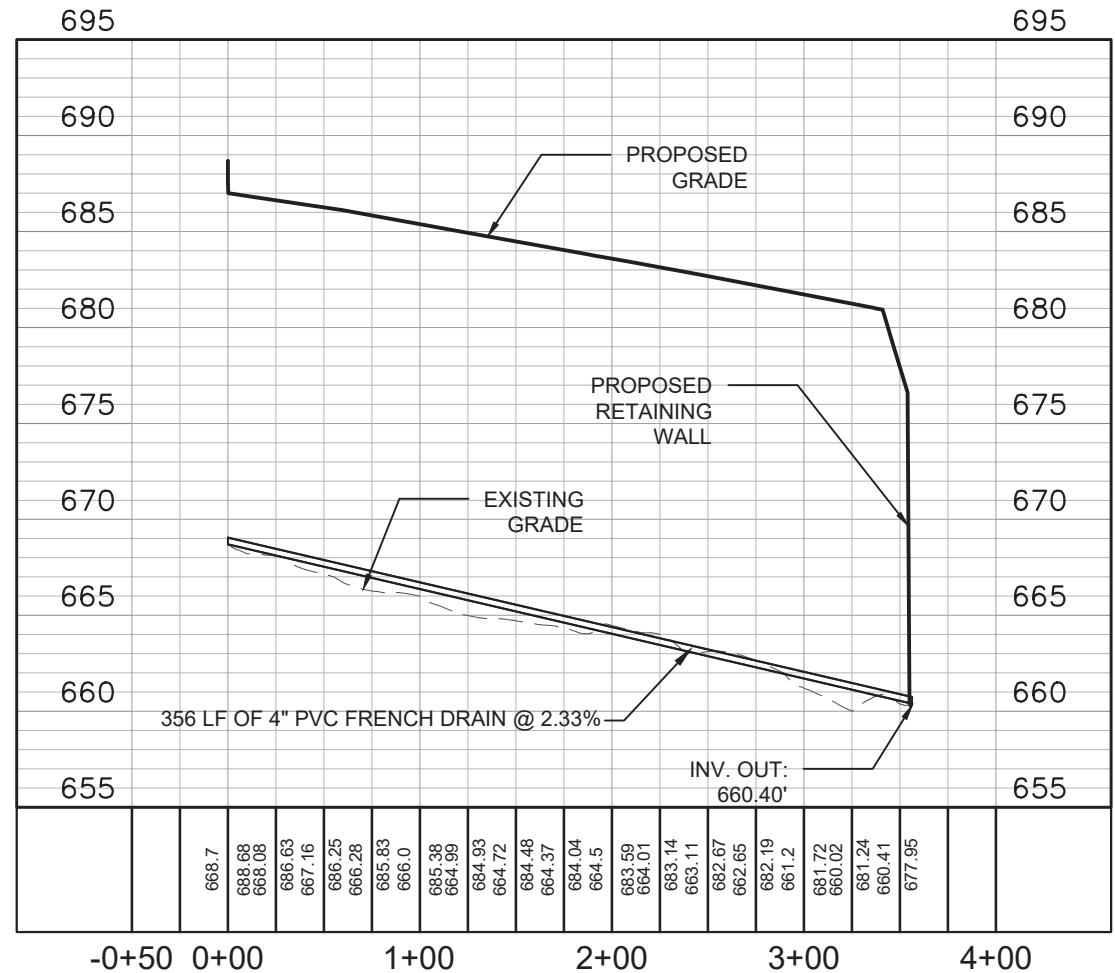
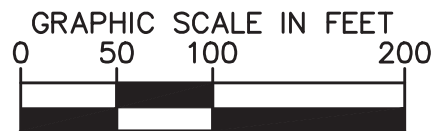
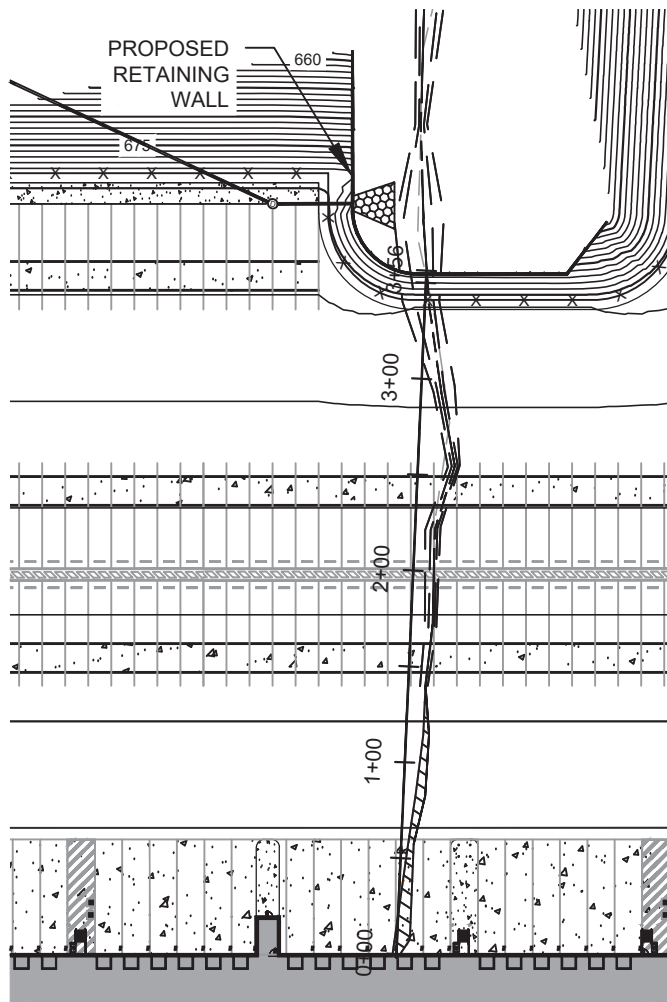
PROJECT DOGWOOD - ONSITE ALTERNATIVE 2

DATE: 12-02-2021

SHEET 2 of 3

Kimley»Horn

NC LICENSE #F-0102 ©2021
200 SOUTH TRYON STREET, SUITE 200
CHARLOTTE, NORTH CAROLINA 28202
PHONE 704-333-5131



PROPOSED FRENCH DRAIN SYSTEM
 HORIZONTAL SCALE: 1"=100'
 VERTICAL SCALE: 1"=10'

PROJECT DOGWOOD - ONSITE ALTERNATIVE 2

DATE: 12-02-2021

SHEET 3 of 3

Kimley»Horn

NC LICENSE #F-0102 ©2021
 200 SOUTH TRYON STREET, SUITE 200
 CHARLOTTE, NORTH CAROLINA 28202
 PHONE 704-333-5131