

Legend

- U-5798, Section A
- U-5798, Section B
- Railroad
- Federal Land
- Municipal Boundary
- County Boundary

Gillis Hill Road Widening

Widen SR 1102 (Gillis Hill Road) to multi-lanes from U.S. 401 (Raeford Road) to SR 1418 (Lindsay Road)

Division 6

TIP No. U-5798

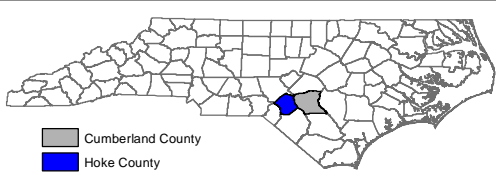
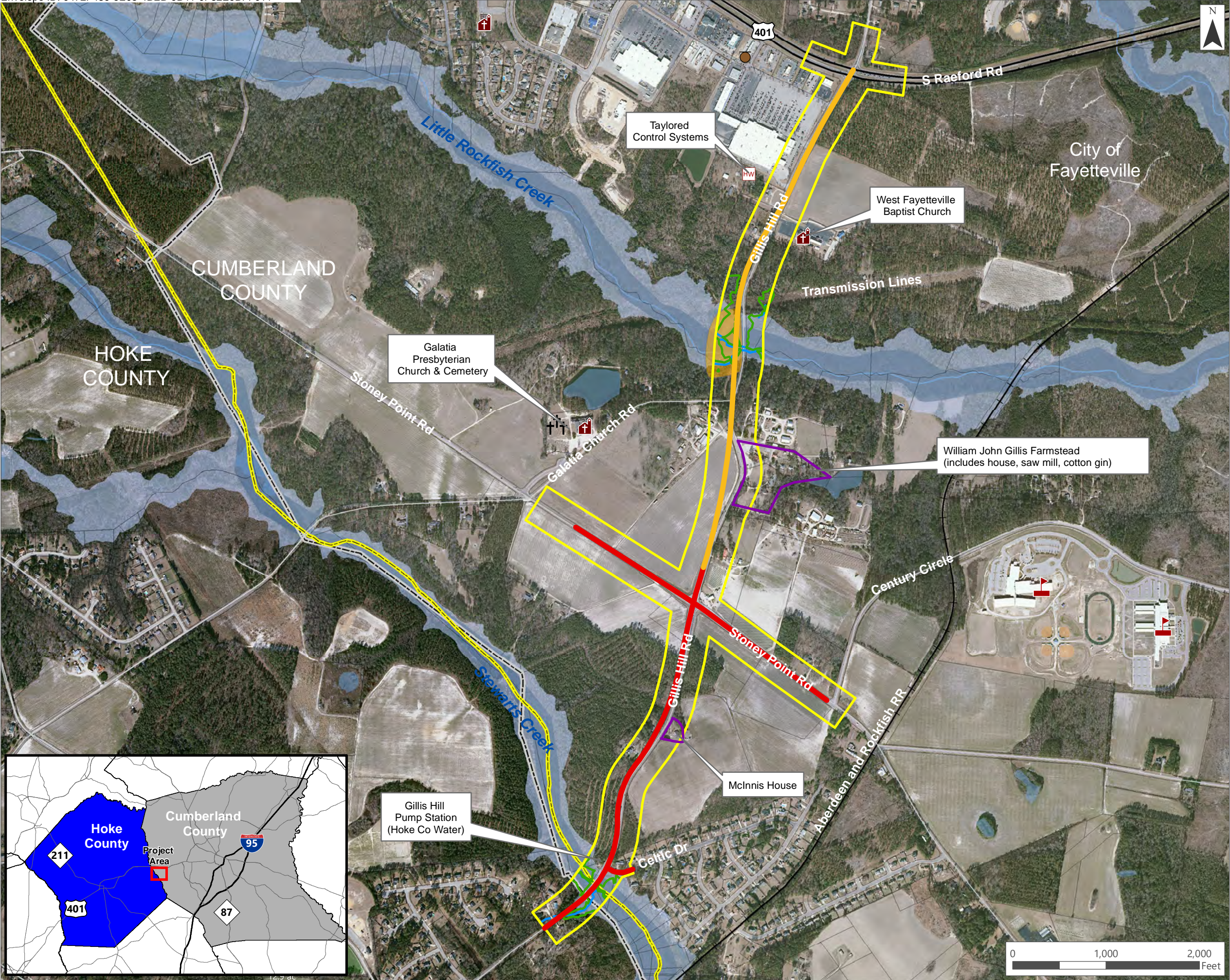


RS&H

October 2019

Figure 1

Vicinity Map



Legend

- U-5798 Study Area
- U-5798, Section A
- U-5798, Section B
- WEX - Stream
- WEX - Wetland
- Archaeological Site
- NR Eligible Historic Property
- Church
- Hazardous Waste Site
- Cemetery
- Underground Storage Tank
- Railroad
- FRIS 100 Year Floodplain
- FRIS Floodway
- Parcel Boundary
- Municipal Boundary
- County Boundary

Gillis Hill Road Widening
Widen SR 1102 (Gillis Hill Road) to multi-lanes from U.S. 401 (Raeford Road) to SR 1418 (Lindsay Road)

Division 6 **TIP No. U-5798**



RS&H

October 2019

Figure 2
Environmental Features