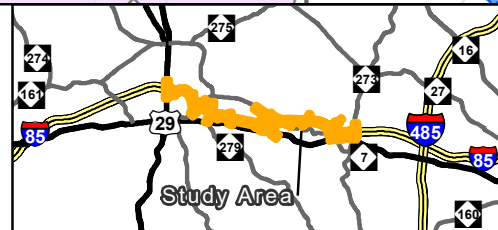
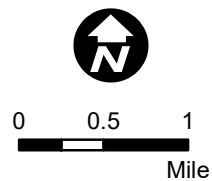


- Legend**
- I-5719 Study Area
  - U-5800 Study Area
  - City of Belmont
  - City of Gastonia
  - City of Lowell
  - Town of McAdenville
  - County Boundary
  - River
  - Stream
  - US Highway
  - NC Highway
  - Local Road
  - Railroad

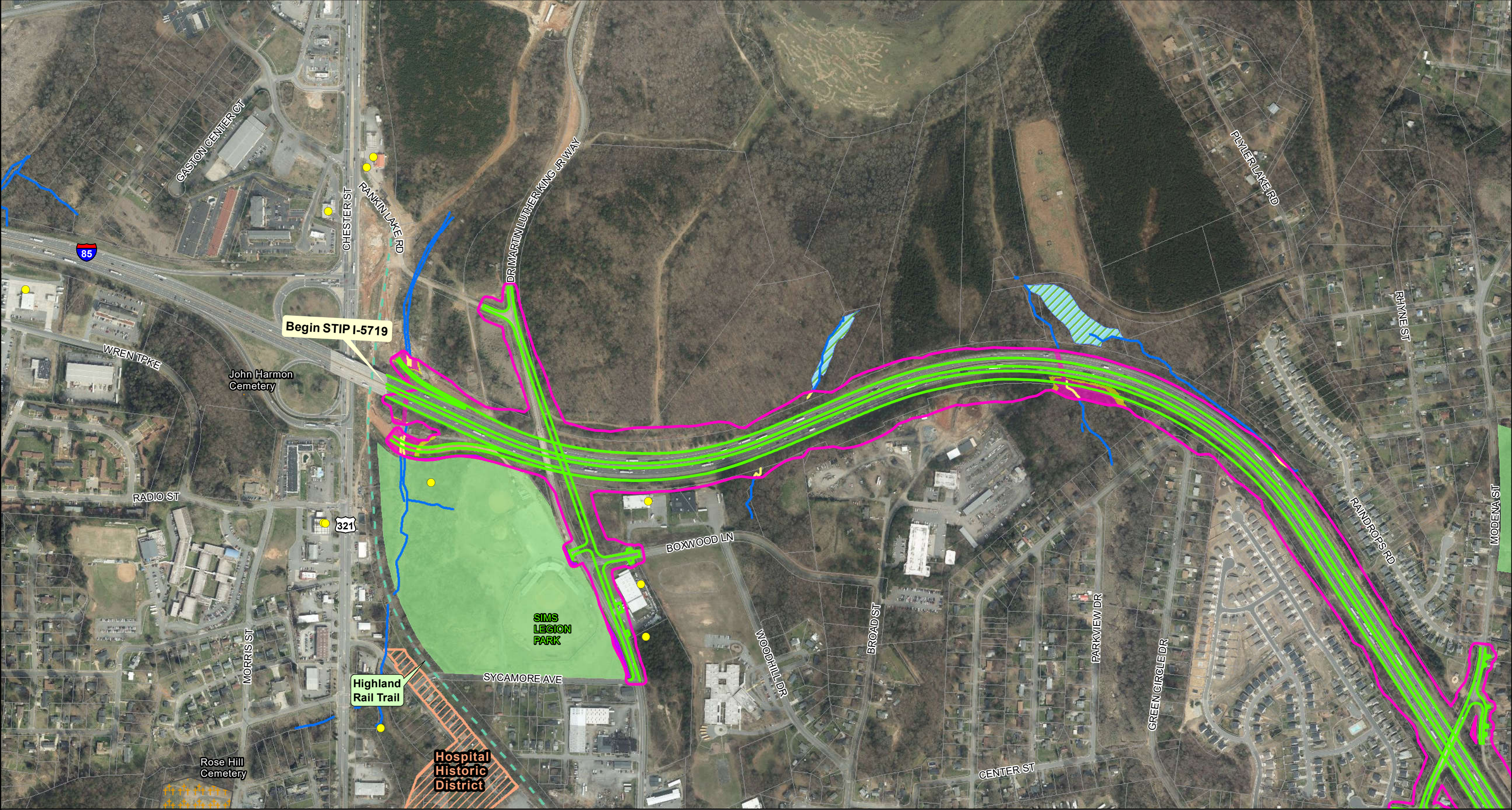


**Project Location Map**  
**Figure 1**

I-85 Widening  
STIP I-5719 and U-5800  
Gaston County

Source: NCDOT, NC OneMap, ATLAS, HNTB (2022)



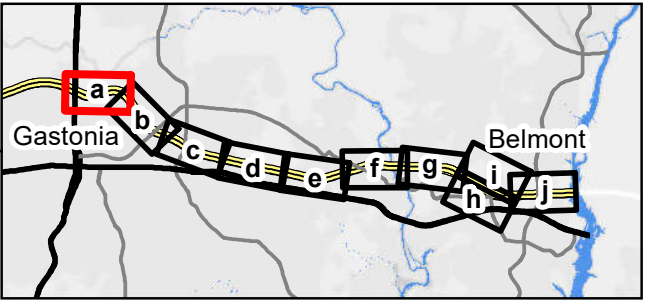
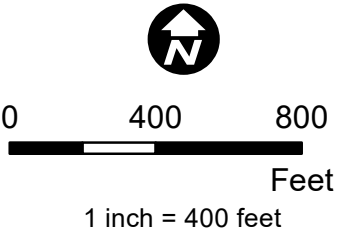


**Legend**

- I-5719 Slope Stake Limits plus 25 feet
- U-5800 Slope Stake Limits plus 25 feet
- Railroad Slope Stake Limits plus 25 feet
- Proposed Edge of Travel
- Potential Stream Impacts
- Potential Wetland Impacts
- Potential Historic Impacts
- Potential Park Impacts

- Potential 500-Year Floodplain Impacts
- Potential 100-Year Floodplain Impacts
- Potential WSW - Critical Impacts
- Potential WSW - Protected Impacts
- Delineated Streams
- Delineated Wetlands
- NCHPO Historic Boundary
- Park

- Hazardous Waste Sites
- Cemetery
- Property Boundaries
- Greenway/Blueway
- Railroad
- River

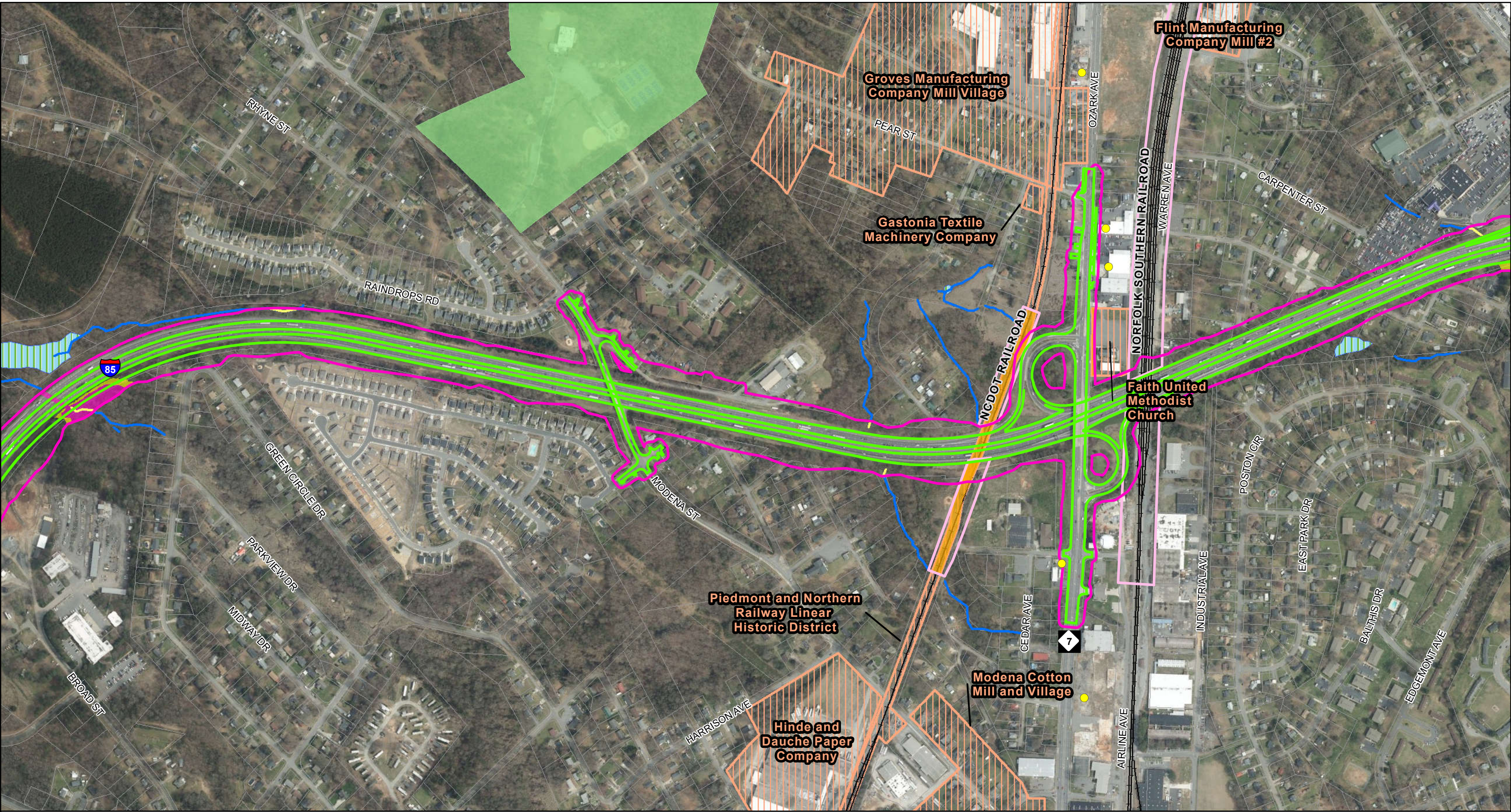


**Potential Impacts Map**  
**Figure 2a**

I-85 Widening  
STIP Projects I-5719 and U-5800  
Gaston County

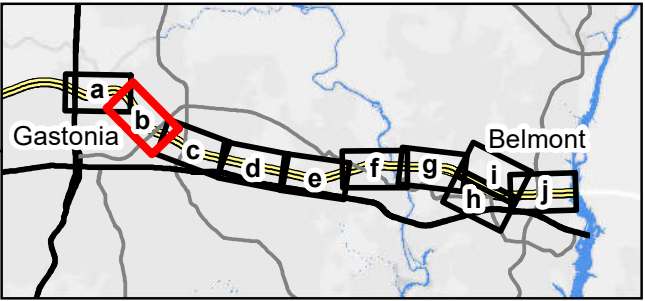
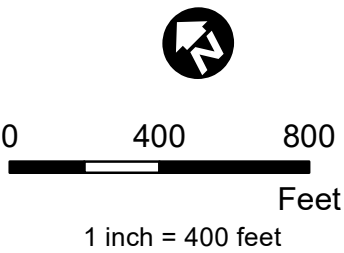
Source: NCDOT, NC OneMap, ATLAS, HNTB (2022)





**Legend**

I-5719 Slope Stake Limits plus 25 feet	Potential 500-Year Floodplain Impacts	Hazardous Waste Sites
U-5800 Slope Stake Limits plus 25 feet	Potential 100-Year Floodplain Impacts	Cemetery
Railroad Slope Stake Limits plus 25 feet	Potential WSW - Critical Impacts	Property Boundaries
Proposed Edge of Travel	Potential WSW - Protected Impacts	Greenway/Blueway
Potential Stream Impacts	Delineated Streams	Railroad
Potential Wetland Impacts	Delineated Wetlands	River
Potential Historic Impacts	NCHPO Historic Boundary	
Potential Park Impacts	Park	

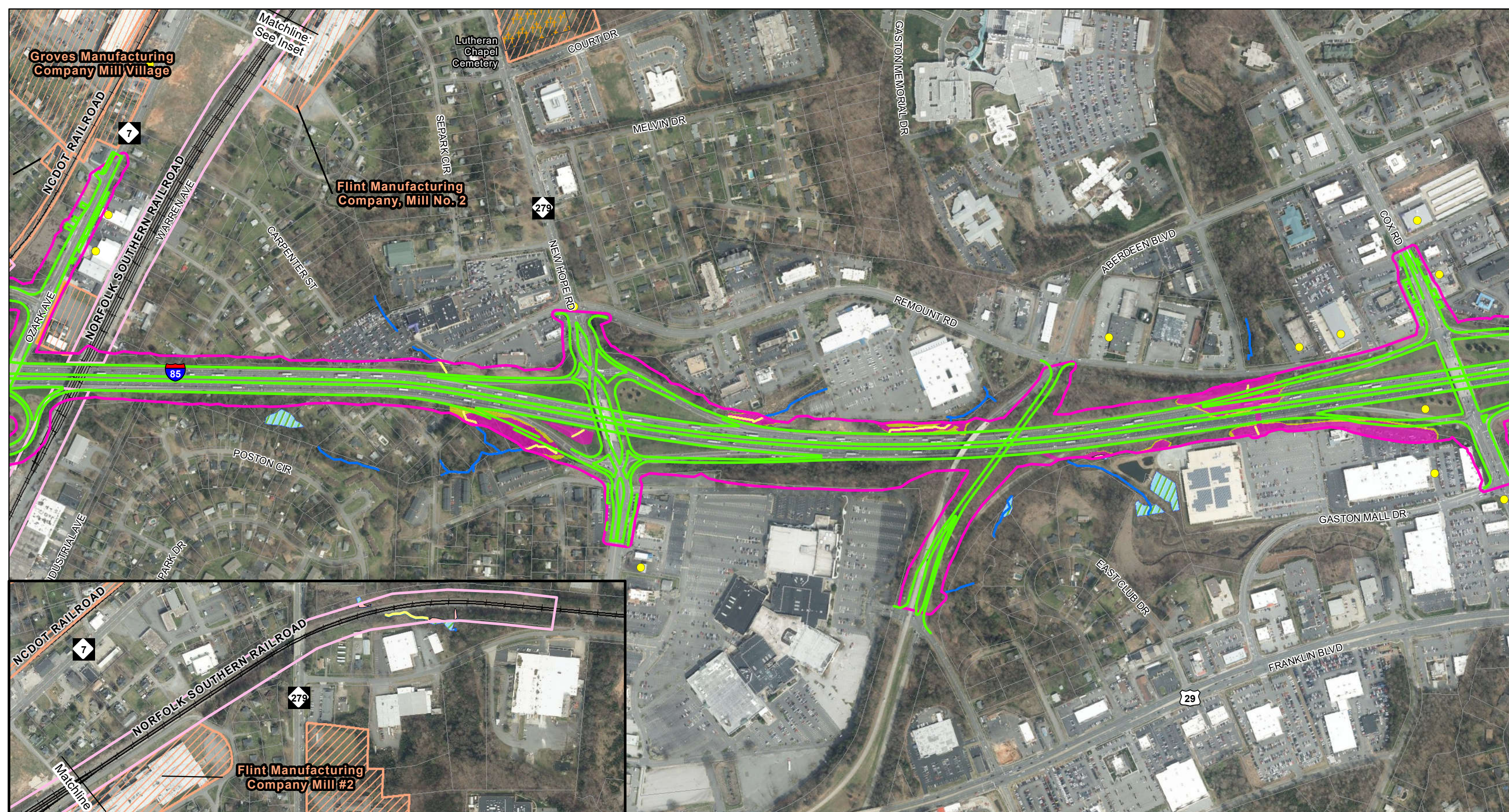


**Potential Impacts Map**  
**Figure 2b**

I-85 Widening  
STIP Projects I-5719 and U-5800  
Gaston County

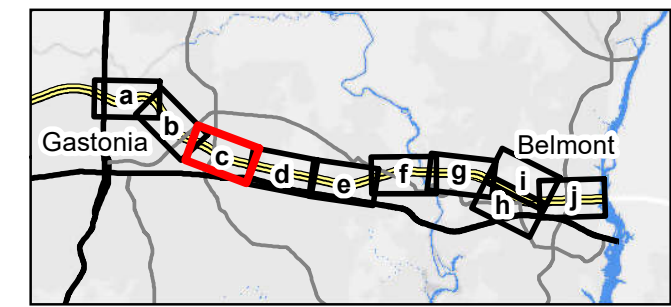
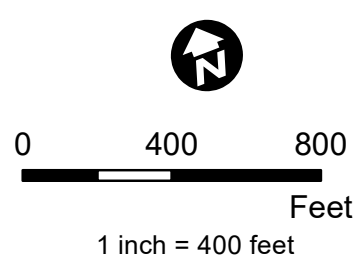
Source: NCDOT, NC OneMap, ATLAS, HNTB (2022)





**Legend**

I-5719 Slope Stake Limits plus 25 feet	Potential 500-Year Floodplain Impacts	Hazardous Waste Sites
U-5800 Slope Stake Limits plus 25 feet	Potential 100-Year Floodplain Impacts	Cemetery
Railroad Slope Stake Limits plus 25 feet	Potential WSW - Critical Impacts	Property Boundaries
Proposed Edge of Travel	Potential WSW - Protected Impacts	Greenway/Blueway
Potential Stream Impacts	Delineated Streams	Railroad
Potential Wetland Impacts	Delineated Wetlands	River
Potential Historic Impacts	NCHPO Historic Boundary	
Potential Park Impacts	Park	

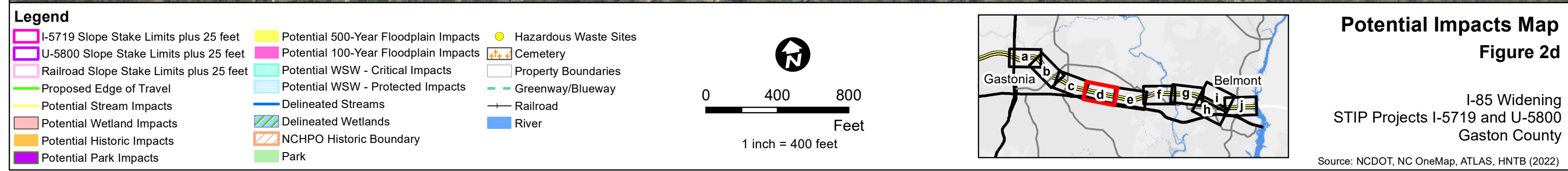
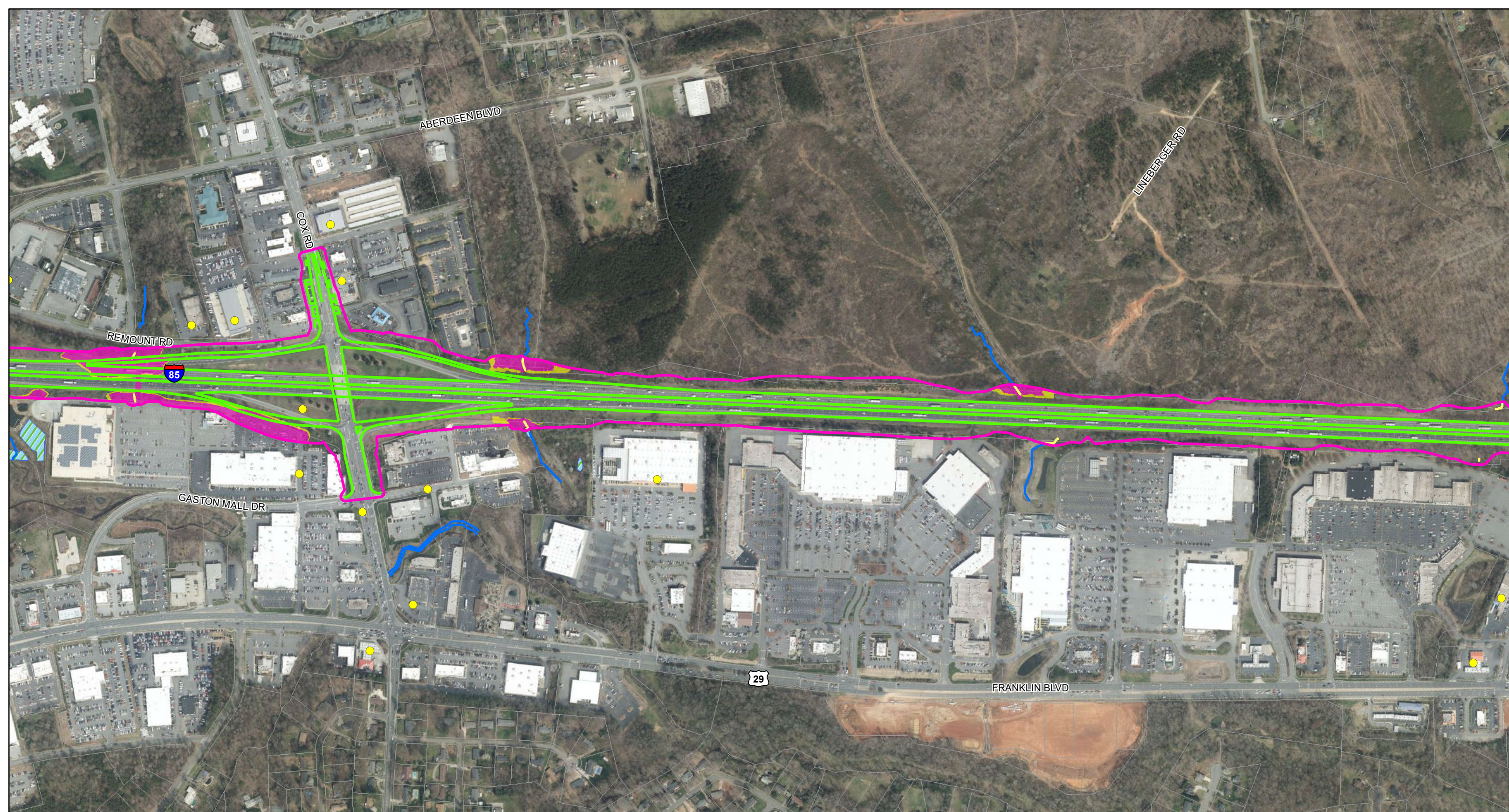


**Potential Impacts Map**  
**Figure 2c**

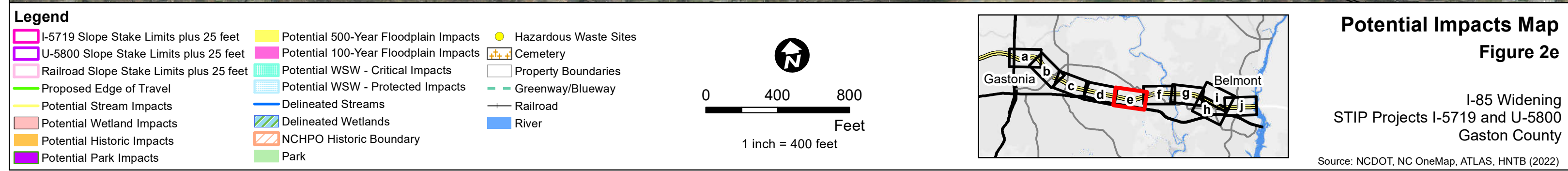
I-85 Widening  
STIP Projects I-5719 and U-5800  
Gaston County

Source: NCDOT, NC OneMap, ATLAS, HNTB (2022)

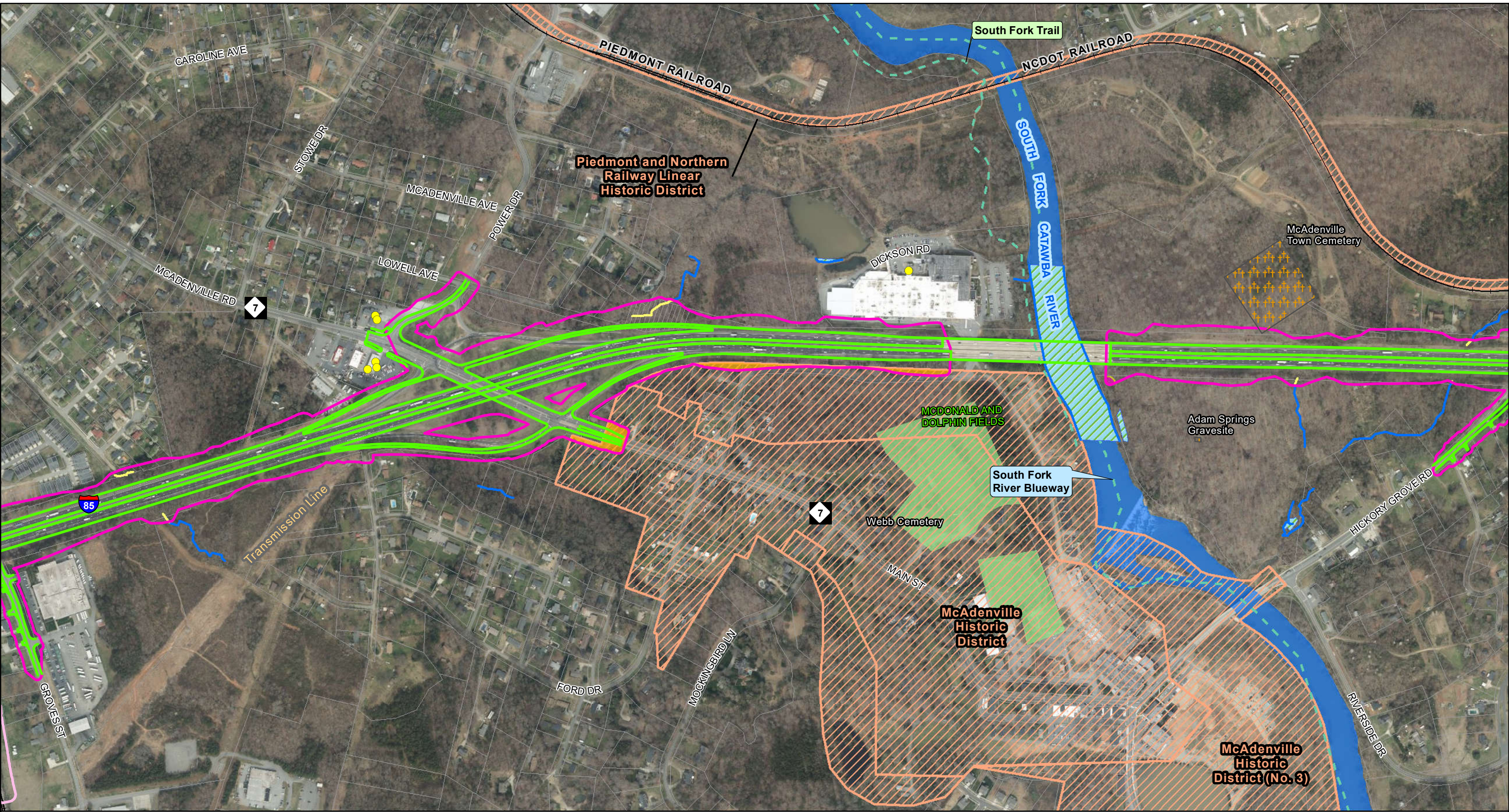






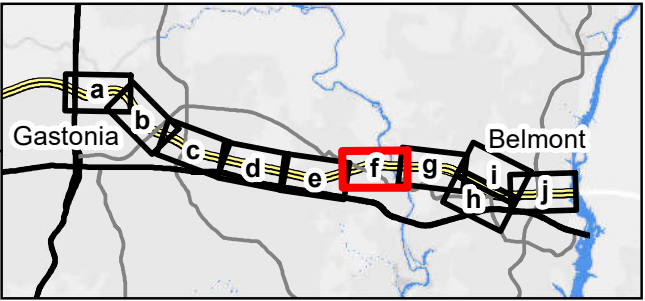
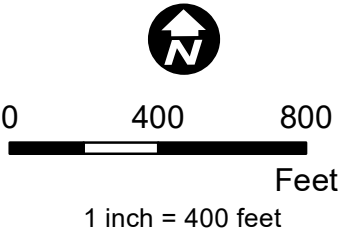






**Legend**

I-5719 Slope Stake Limits plus 25 feet	Potential 500-Year Floodplain Impacts	Hazardous Waste Sites
U-5800 Slope Stake Limits plus 25 feet	Potential 100-Year Floodplain Impacts	Cemetery
Railroad Slope Stake Limits plus 25 feet	Potential WSW - Critical Impacts	Property Boundaries
Proposed Edge of Travel	Potential WSW - Protected Impacts	Greenway/Blueway
Potential Stream Impacts	Delineated Streams	Railroad
Potential Wetland Impacts	Delineated Wetlands	River
Potential Historic Impacts	NCHPO Historic Boundary	
Potential Park Impacts	Park	

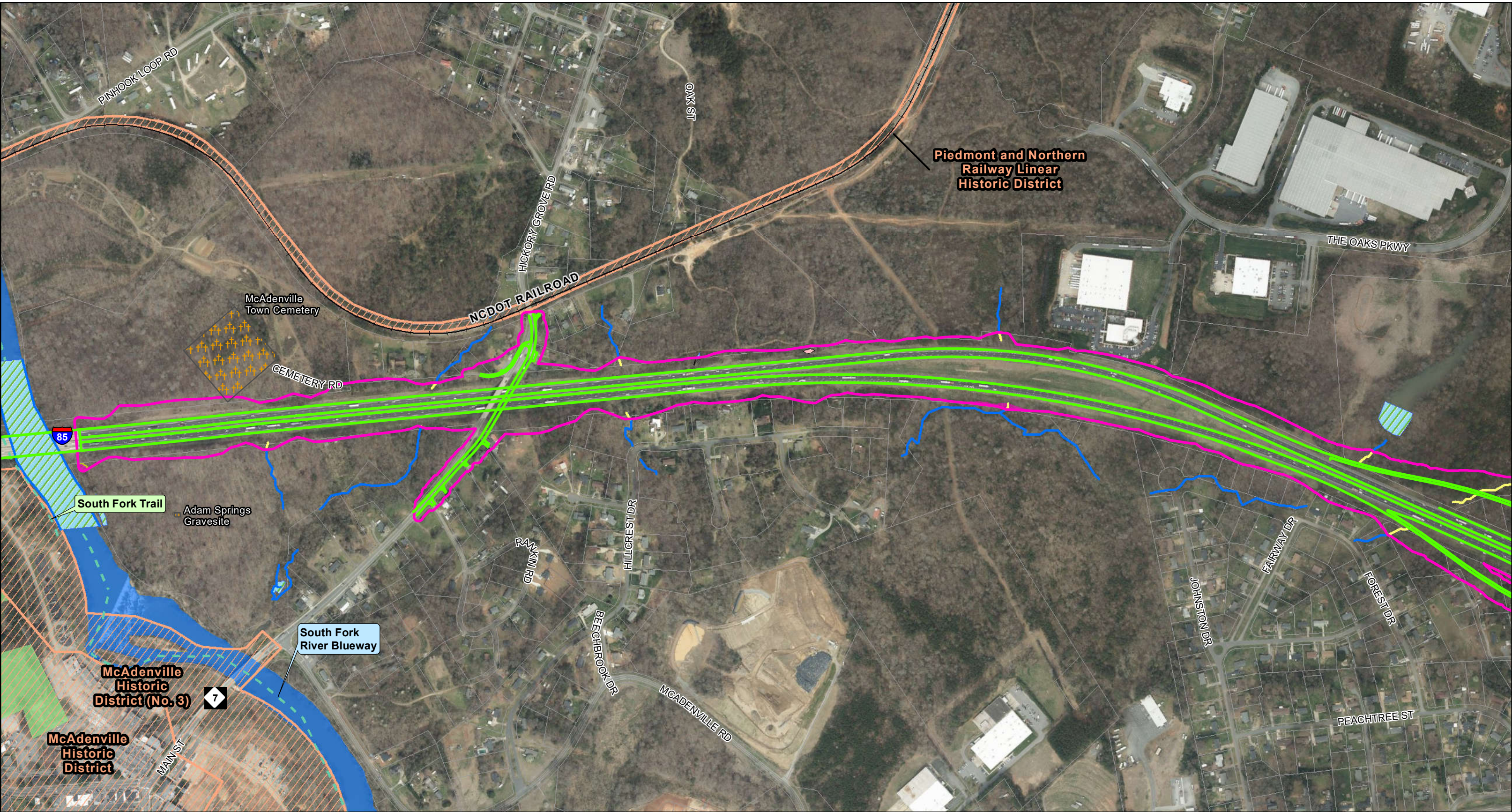


**Potential Impacts Map**  
**Figure 2f**

I-85 Widening  
STIP Projects I-5719 and U-5800  
Gaston County

Source: NCDOT, NC OneMap, ATLAS, HNTB (2022)



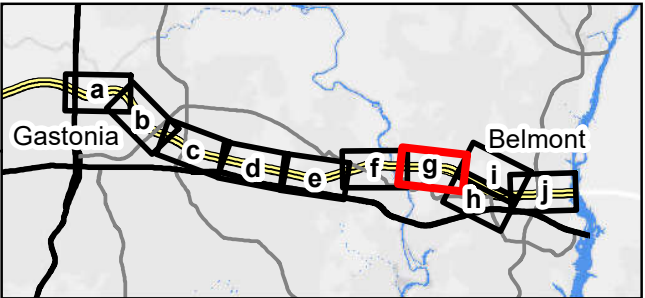
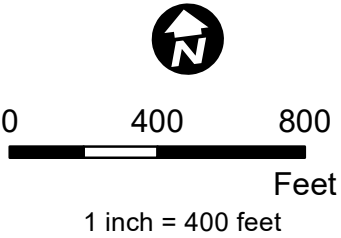


**Legend**

- I-5719 Slope Stake Limits plus 25 feet
- U-5800 Slope Stake Limits plus 25 feet
- Railroad Slope Stake Limits plus 25 feet
- Proposed Edge of Travel
- Potential Stream Impacts
- Potential Wetland Impacts
- Potential Historic Impacts
- Potential Park Impacts

- Potential 500-Year Floodplain Impacts
- Potential 100-Year Floodplain Impacts
- Potential WSW - Critical Impacts
- Potential WSW - Protected Impacts
- Delineated Streams
- Delineated Wetlands
- NCHPO Historic Boundary
- Park

- Hazardous Waste Sites
- Cemetery
- Property Boundaries
- Greenway/Blueway
- Railroad
- River

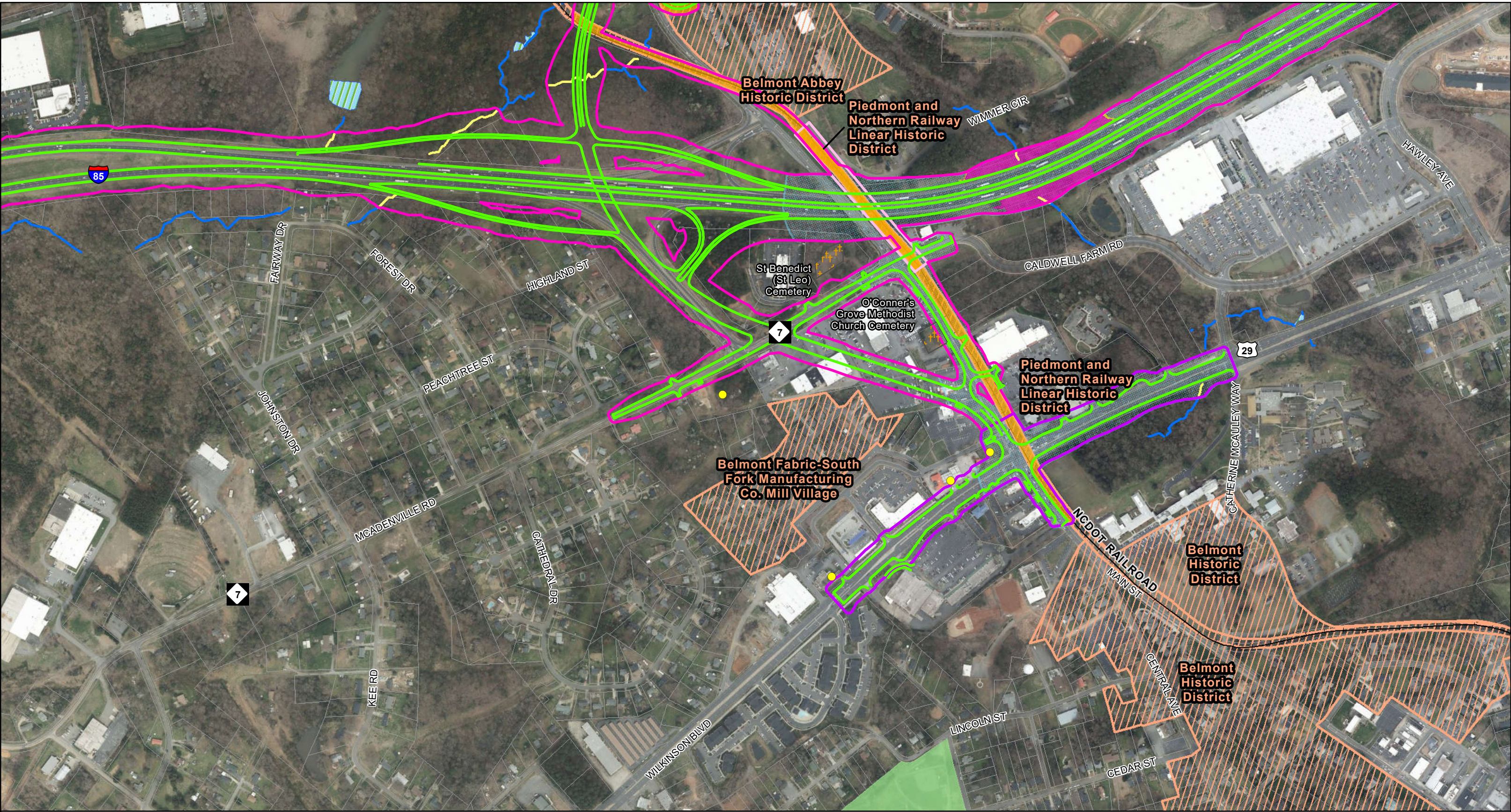


**Potential Impacts Map**  
**Figure 2g**

I-85 Widening  
STIP Projects I-5719 and U-5800  
Gaston County

Source: NCDOT, NC OneMap, ATLAS, HNTB (2022)



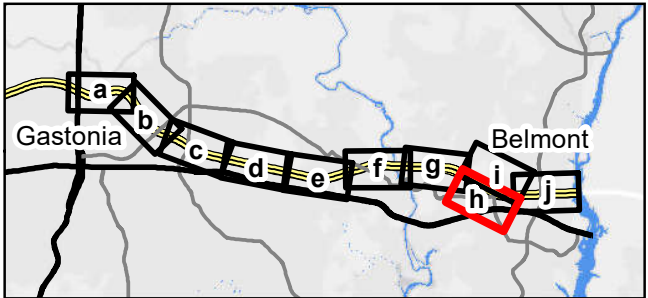
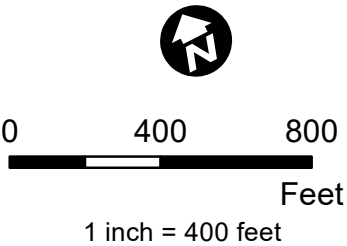


**Legend**

- I-5719 Slope Stake Limits plus 25 feet
- U-5800 Slope Stake Limits plus 25 feet
- Railroad Slope Stake Limits plus 25 feet
- Proposed Edge of Travel
- Potential Stream Impacts
- Potential Wetland Impacts
- Potential Historic Impacts
- Potential Park Impacts

- Potential 500-Year Floodplain Impacts
- Potential 100-Year Floodplain Impacts
- Potential WSW - Critical Impacts
- Potential WSW - Protected Impacts
- Delineated Streams
- Delineated Wetlands
- NCHPO Historic Boundary
- Park

- Hazardous Waste Sites
- Cemetery
- Property Boundaries
- Greenway/Blueway
- Railroad
- River

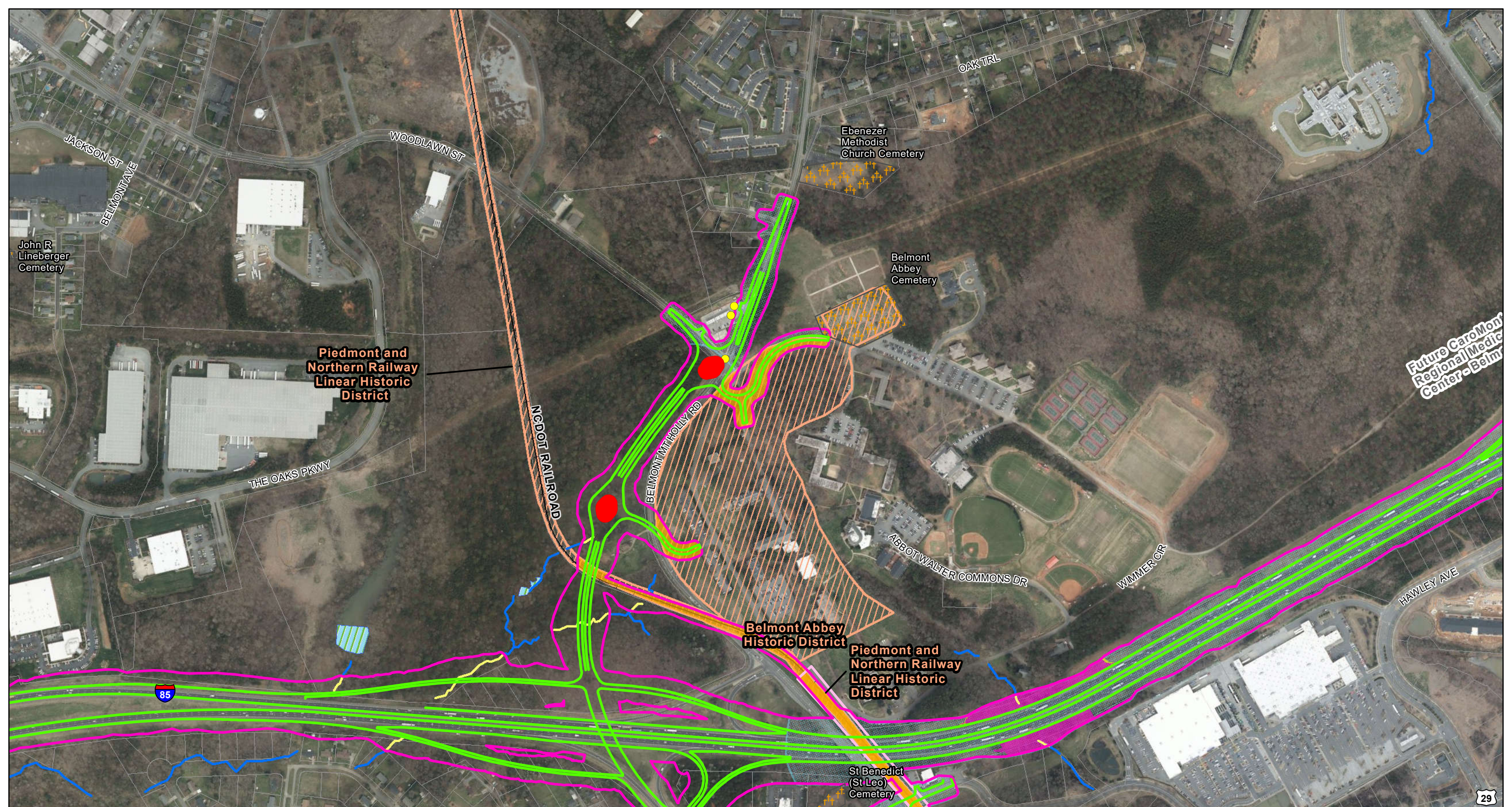


**Potential Impacts Map**  
**Figure 2h**

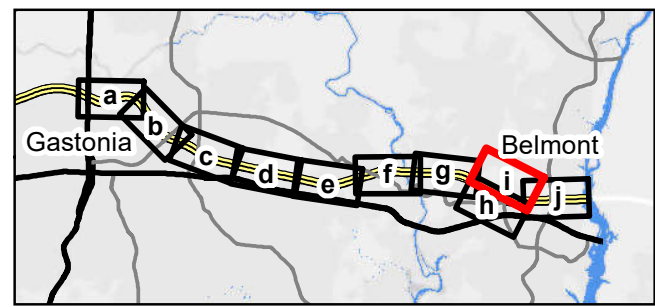
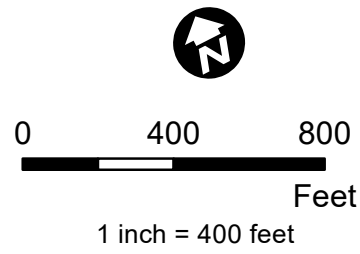
I-85 Widening  
STIP Projects I-5719 and U-5800  
Gaston County

Source: NCDOT, NC OneMap, ATLAS, HNTB (2022)





- Legend**
- |  |                                       |                       |
|--|---------------------------------------|-----------------------|
| I-5719 Slope Stake Limits plus 25 feet   | Potential 500-Year Floodplain Impacts | Hazardous Waste Sites |
| U-5800 Slope Stake Limits plus 25 feet   | Potential 100-Year Floodplain Impacts | Cemetery              |
| Railroad Slope Stake Limits plus 25 feet | Potential WSW - Critical Impacts      | Property Boundaries   |
| Proposed Edge of Travel                  | Potential WSW - Protected Impacts     | Greenway/Blueway      |
| Potential Stream Impacts                 | Delineated Streams                    | Railroad              |
| Potential Wetland Impacts                | Delineated Wetlands                   | River                 |
| Potential Historic Impacts               | NCHPO Historic Boundary               |                       |
| Potential Park Impacts                   | Park                                  |                       |

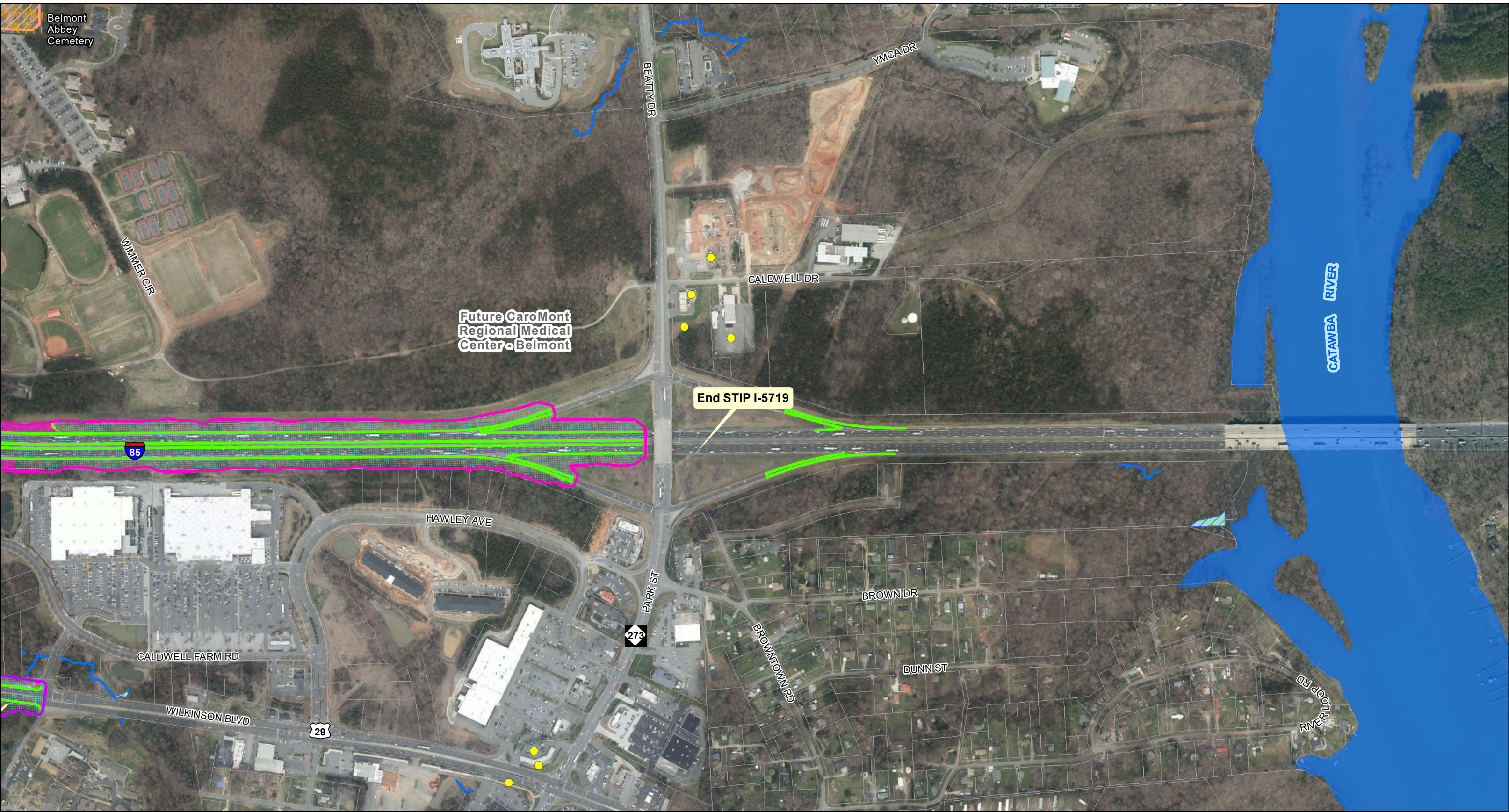


**Potential Impacts Map**  
**Figure 2i**

I-85 Widening  
STIP Projects I-5719 and U-5800  
Gaston County

Source: NCDOT, NC OneMap, ATLAS, HNTB (2022)



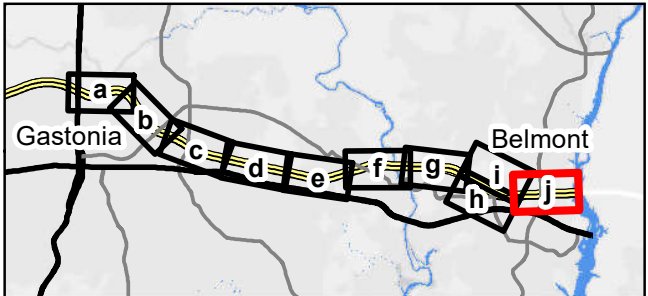
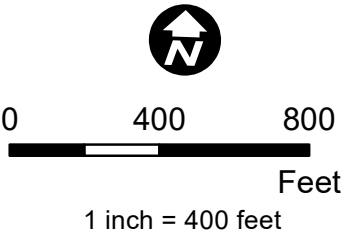


**Legend**

- I-5719 Slope Stake Limits plus 25 feet
- U-5800 Slope Stake Limits plus 25 feet
- Railroad Slope Stake Limits plus 25 feet
- Proposed Edge of Travel
- Potential Stream Impacts
- Potential Wetland Impacts
- Potential Historic Impacts
- Potential Park Impacts

- Potential 500-Year Floodplain Impacts
- Potential 100-Year Floodplain Impacts
- Potential WSW - Critical Impacts
- Potential WSW - Protected Impacts
- Delineated Streams
- Delineated Wetlands
- NCHPO Historic Boundary
- Park

- Hazardous Waste Sites
- Cemetery
- Property Boundaries
- Greenway/Blueway
- Railroad
- River



Potential Impacts Map  
Figure 2j

I-85 Widening  
STIP Projects I-5719 and U-5800  
Gaston County

Source: NCDOT, NC OneMap, ATLAS, HNTB (2022)