

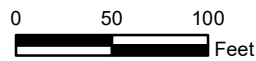




Legend

-  Wetland (± 1.57 acres)
-  Project Study Area (± 2.28 acres)



DATA SOURCES:
 ESRI, NC One Map Orthoimagery,
 2017. Project Study Area based on
 data provided by The Hutton
 Company.

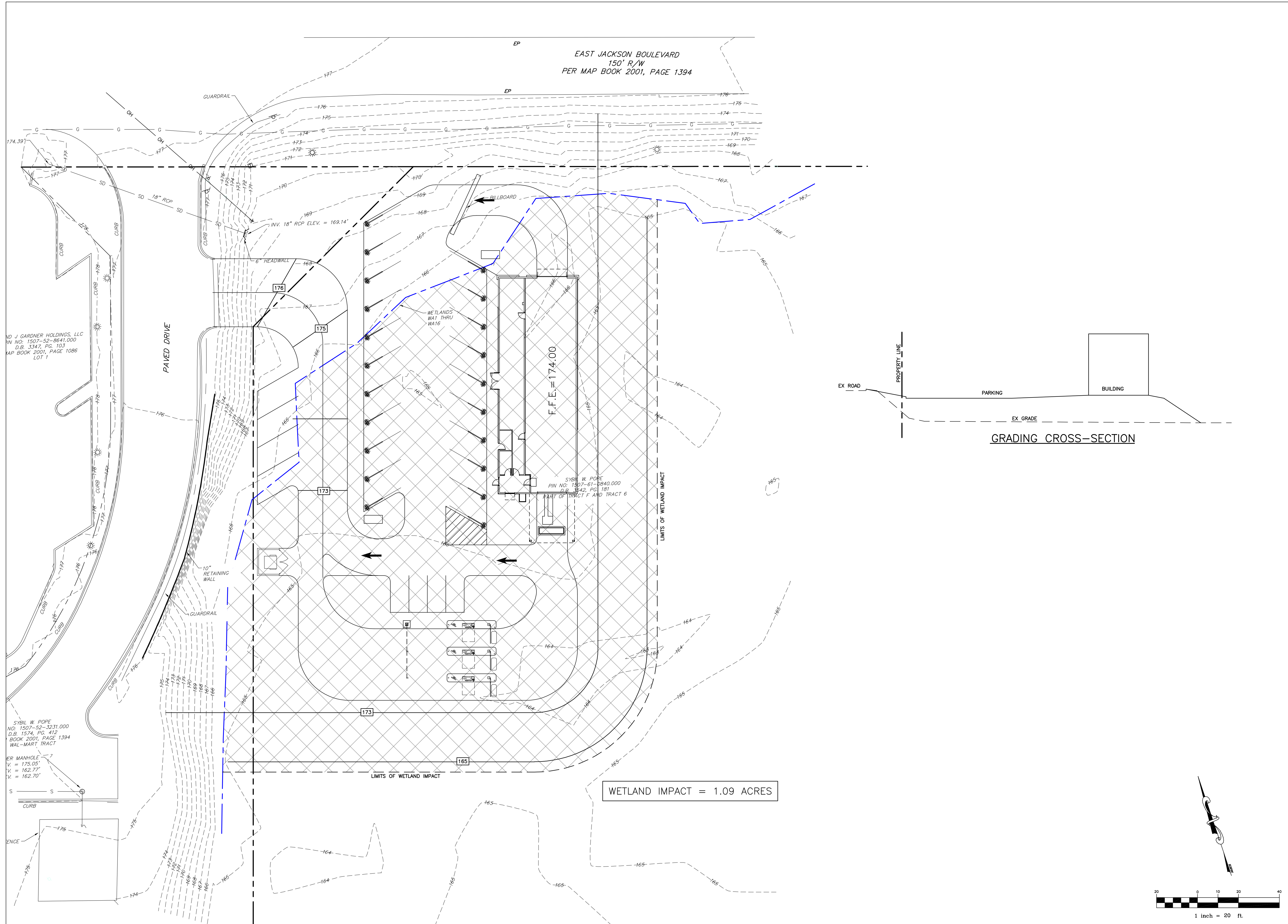
PM:	RTT
Drawn By:	AAF
Checked By:	RTT
Approved By:	RTT
Project No.	70217177
Scale:	1 in = 100 ft
Filename:	70217177 - Exhibit 3
Date:	April 2021

Terracon

2401 Brentwood Road, Suite 107 Raleigh, NC 27604
 Phone: (919) 873-2211 Fax: (919) 873-9555

Potential Wetlands and Waters
Erwin Modwash Site East Jackson Boulevard, Erwin Harnett County, South Carolina

EXHIBIT NO.
3



NO J GARDNER HOLDINGS, LLC
PIN NO. 1507-52-8641.000
D.B. 3347, PG. 103
MAP BOOK 2001, PAGE 1086
LOT 1

SEWER MANHOLE
V. = 175.05'
V. = 162.77'
V. = 162.70'

BERRY ENGINEERS LLC
CIVIL ENGINEER
3555 KEITH ST. NW, SUITE 109
CLEVELAND, TN 37312
TEL: (423) 790-5880
DBA BERRY ENGINEERS, PLLC; FIRM LICENSE: P-118

DEVELOPER:
HUTTON
736 CHERRY STREET
CHATTANOOGA, TN 37402

PROJECT:
CAR WASH
1806 LIBERTY DRIVE
THOMASVILLE, NC 27360

EXHIBIT

REVISIONS

1		
2		
3		
4		
5		
6		
7		
8		
9		
10		

SHEET NAME:
WETLAND IMPACT EXHIBIT

DATE: 06/01/2021
DRAWN BY: JDS
CHECKED BY: BMB
PROJECT NO.: 21047
SHEET NUMBER:
EX-A

