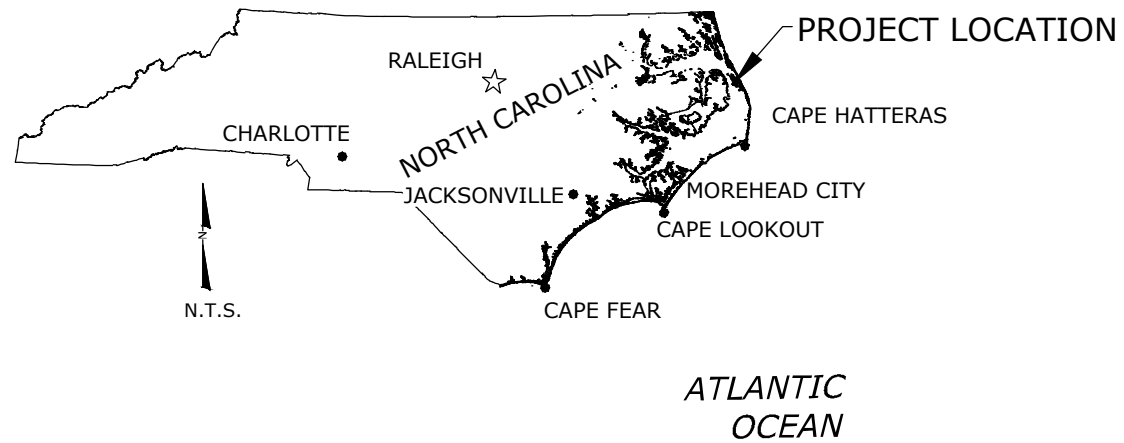
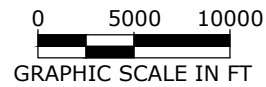


PROJECT VESTA, PBC NEARSHORE DEPLOYMENT OF OLIVINE SAND DARE COUNTY, NORTH CAROLINA



SHEET INDEX

- 1 COVER SHEET
- 2 PLAN VIEW
- 3 CROSS SECTIONS

GENERAL NOTES:

1. COORDINATES ARE IN FEET BASED ON NORTH CAROLINA STATE PLANE COORDINATE SYSTEM, NORTH AMERICAN DATUM 1983, (NAD83).
2. ELEVATIONS ARE IN FEET RELATIVE TO NORTH AMERICAN VERTICAL DATUM 1988 (NAVD88)
3. DATE OF AERIAL PHOTOGRAPHY: AUGUST 5, 2020.
4. SURVEY DATA COLLECTED BY APTIM COASTAL PLANNING AND ENGINEERING OF NORTH CAROLINA, INC. IN MAY 2019.

P:\Projects\USA\NC\Clear County\PROJECT VESTA\Nearshore Data Deployment\Project\CAD\Deployment\Deployment_CS\Map\03.dwg - Aug 29, 2022 @ 11:58am - kdk196

**NOT FOR CONSTRUCTION
FOR REGULATORY REVIEW ONLY**

**COASTAL PROTECTION ENGINEERING
OF NORTH CAROLINA, INC.**

4038 MASONBORO LOOP RD.
WILMINGTON, NC 28409

ENGINEERING LICENSE CERTIFICATE #: C-2331

PH: (910)999-1905

REVISIONS

No.	Date	Description

Designed by: AP	Checked by: AP
Drawn by: FD	Reviewed by: BR
Date: 8/29/2022	Submitted by: BR
Plot Scale: AS NOTED	Project No.: 2020048

Reference Files:

PROJECT VESTA, PBC
NEARSHORE DEPLOYMENT OF OLIVINE SAND
DARE COUNTY, NORTH CAROLINA

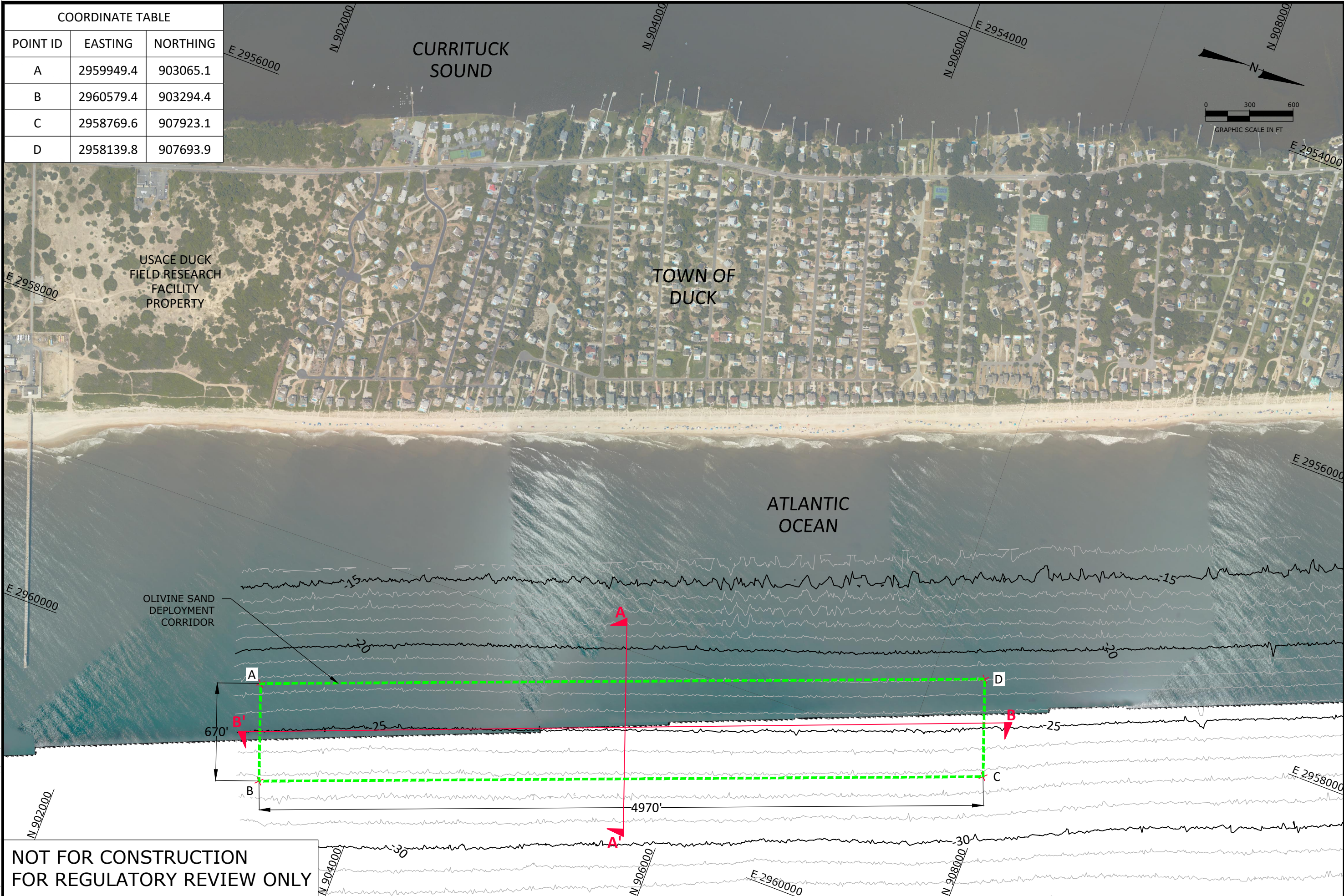
COVER SHEET

DRAWING NO.

CS-1

SHEET 1 OF 3

COORDINATE TABLE		
POINT ID	EASTING	NORTHING
A	2959949.4	903065.1
B	2960579.4	903294.4
C	2958769.6	907923.1
D	2958139.8	907693.9



**NOT FOR CONSTRUCTION
FOR REGULATORY REVIEW ONLY**

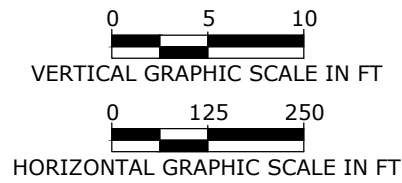
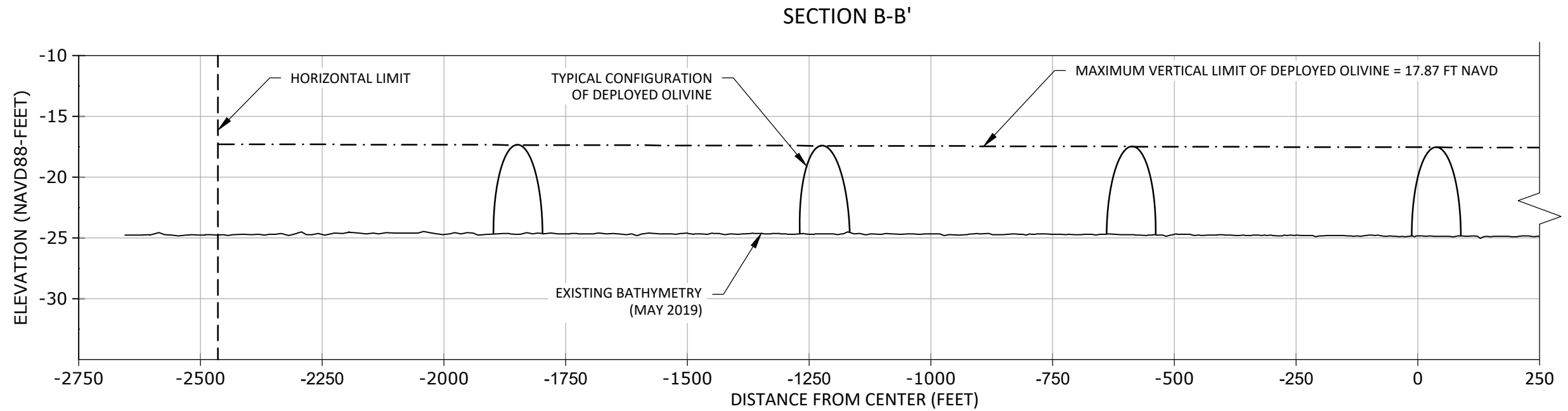
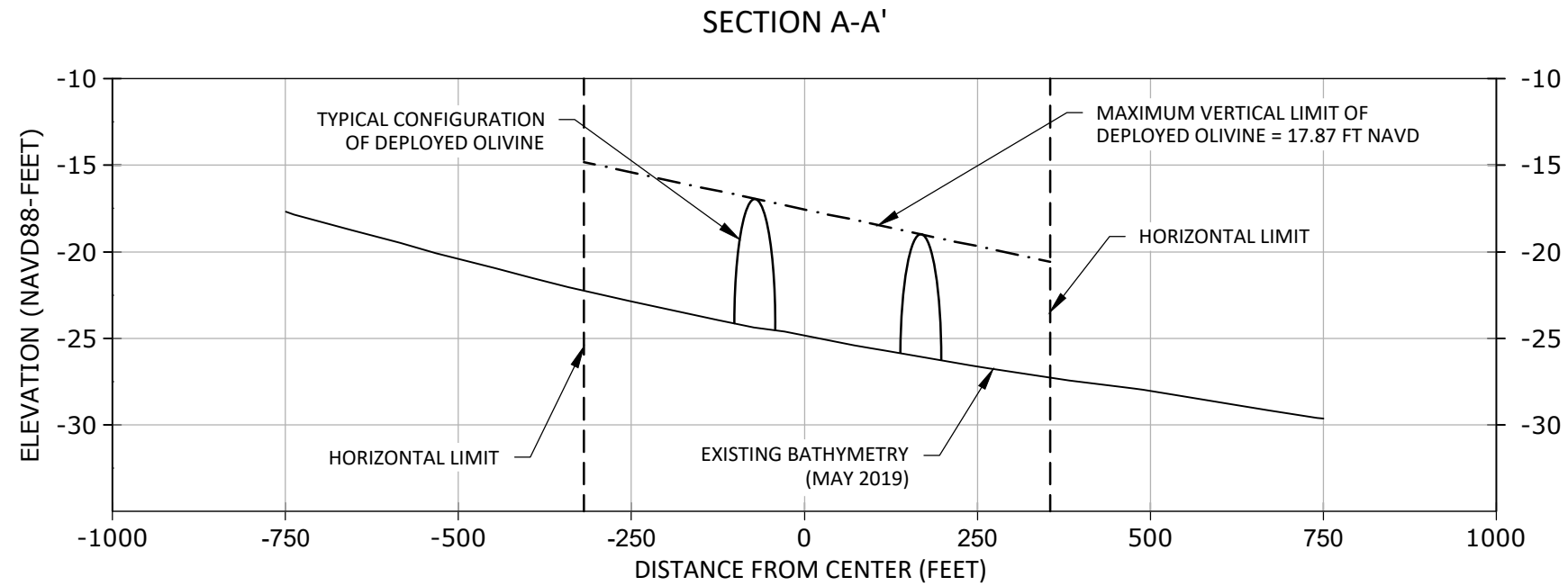
**COASTAL PROTECTION ENGINEERING
OF NORTH CAROLINA, INC.**
4038 MASONBORO LOOP RD.
WILMINGTON, NC 28409
ENGINEERING LICENSE CERTIFICATE #: C-2331
PH: (810)999-1905

REVISED	NO.	DATE	DESCRIPTION

Checked by: AP	Reviewed by: BR	Submitted by: BR	Project No.: 2020048
Designed by: AP	Drawn by: FD	Date: 8/29/2022	Plot Scale: AS NOTED

PROJECT VESTA, PBC
NEARSHORE DEPLOYMENT OF OLIVINE SAND
DARE COUNTY, NORTH CAROLINA
PLAN VIEW

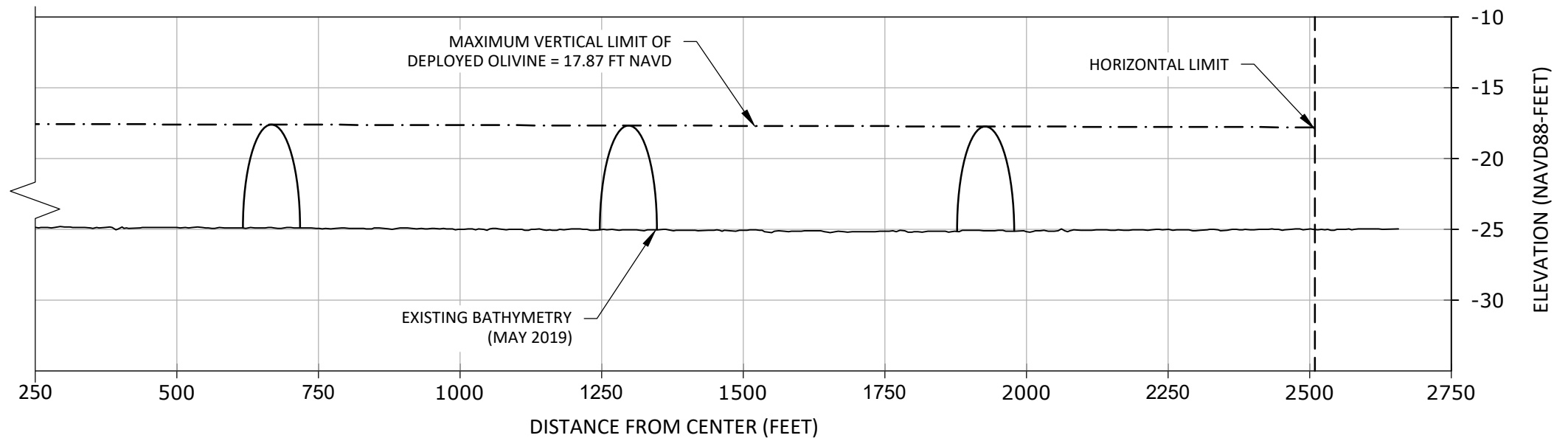
DRAWING NO.
PV-1
SHEET 2 OF 3



NOTE:

1. DATE OF BATHYMETRIC SURVEY IS MAY 2019. SURVEY DATA COLLECTED BY APTIM COASTAL PLANNING AND ENGINEERING OF NORTH CAROLINA, INC.
2. ELEVATIONS SHOWN HEREON ARE IN FEET RELATIVE TO NORTH AMERICAN VERTICAL DATUM 1988 (NAVD88).
3. DEPLOYED OLIVINE SAND WILL NOT EXCEED THE VERTICAL AND HORIZONTAL LIMITS OF 4970' x 670' DEPLOYMENT CORRIDOR.
4. OLIVINE WILL BE DEPLOYED INTO DISCRETE ~100' x ~60' CELLS WITHIN THE LIMITS OF THE OLIVINE SAND DEPLOYMENT CORRIDOR.

**NOT FOR CONSTRUCTION
FOR REGULATORY REVIEW ONLY**



REVISED	No.	Date	Description

Checked by:	AP
Reviewed by:	BR
Submitted by:	BR
Date:	8/29/2022
Project No.:	2020048
Plot Scale:	AS NOTED

Reference Files:
PROJECT VESTA, PBC
NEARSHORE DEPLOYMENT OF OLIVINE SAND
DARE COUNTY, NORTH CAROLINA
CROSS SECTIONS