

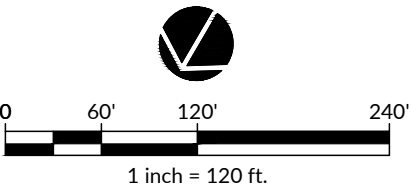
## IMPACT EXHIBITS

\\008.027000270.01\FSC - GoldRock\Wetlands-Stewardship\Wetland Impact Map.dwg, V01.01, 2024.04.16, PALL, MBE

WETLAND IMPACT SUMMARY				
MAP	IMPACT LOCATION	IMPACT SPECIFICATION	WETLAND IMPACTS	
			PERMANENT	
			(SF)	(AC)
A	W1	FILL GRADING	79,509	1.825
TOTALS			79,509	1.825

IMPACT LEGEND

PERMANENT WETLAND



Sheet No. 1

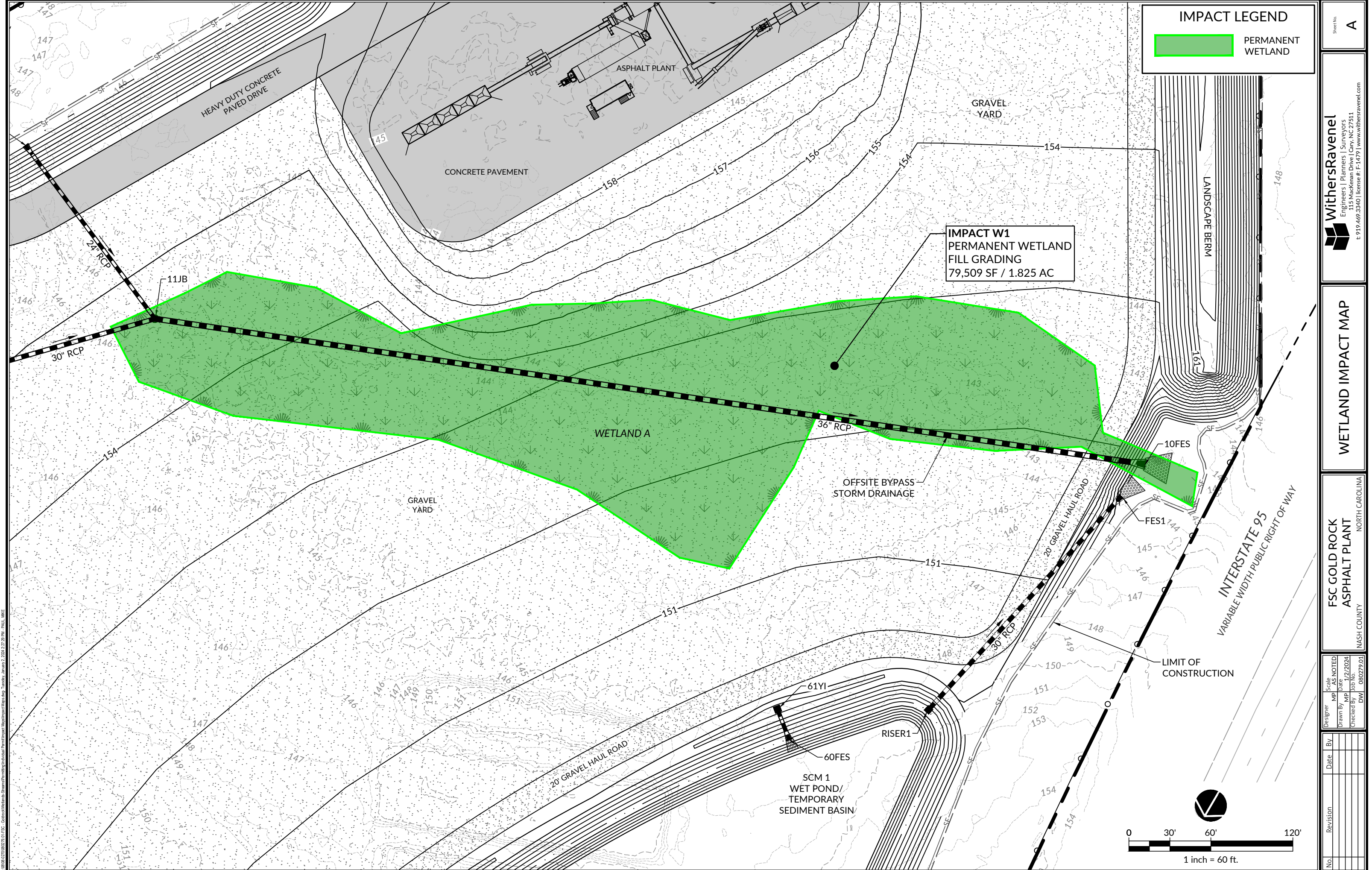
WithersRavenel  
Engineers | Planners | Surveyors  
115 Mackenran Drive | Cary, NC 27511  
t: 919.469.3340 | license #: F-1479 | www.withersravenel.com

WETLAND  
OVERALL IMPACT MAP

FSC GOLD ROCK  
ASPHALT PLANT  
NORTH CAROLINA  
NASH COUNTY

Designer	Scale	MP	AS NOTED
Drawn By	Date	MP	12/2/2024
Checked By	Job No.	DW	080279.01
No.	Revision	Date	By





**IMPACT LEGEND**

PERMANENT  
WETLAND

**IMPACT W1**  
 PERMANENT WETLAND  
 FILL GRADING  
 79,509 SF / 1.825 AC

Sheet No. **A**

**WithersRavenel**  
 Engineers | Planners | Surveyors  
 115 Mackenran Drive | Cary, NC 27511  
 t: 919.469.3340 | license #: F-1479 | www.withersravenel.com

**WETLAND IMPACT MAP**

FSC GOLD ROCK  
 ASPHALT PLANT  
 NASH COUNTY

Scale: AS NOTED  
 Date: 12/2/2024  
 Job No.: 080279.01

No.	Revision	Date	By

12/08/2024 08:27:01 AM FSC - GoldRockWetlands - StormwaterManagementMap.dwg Tuesday, January 2, 2024 2:27:28 PM PAUL MKE