
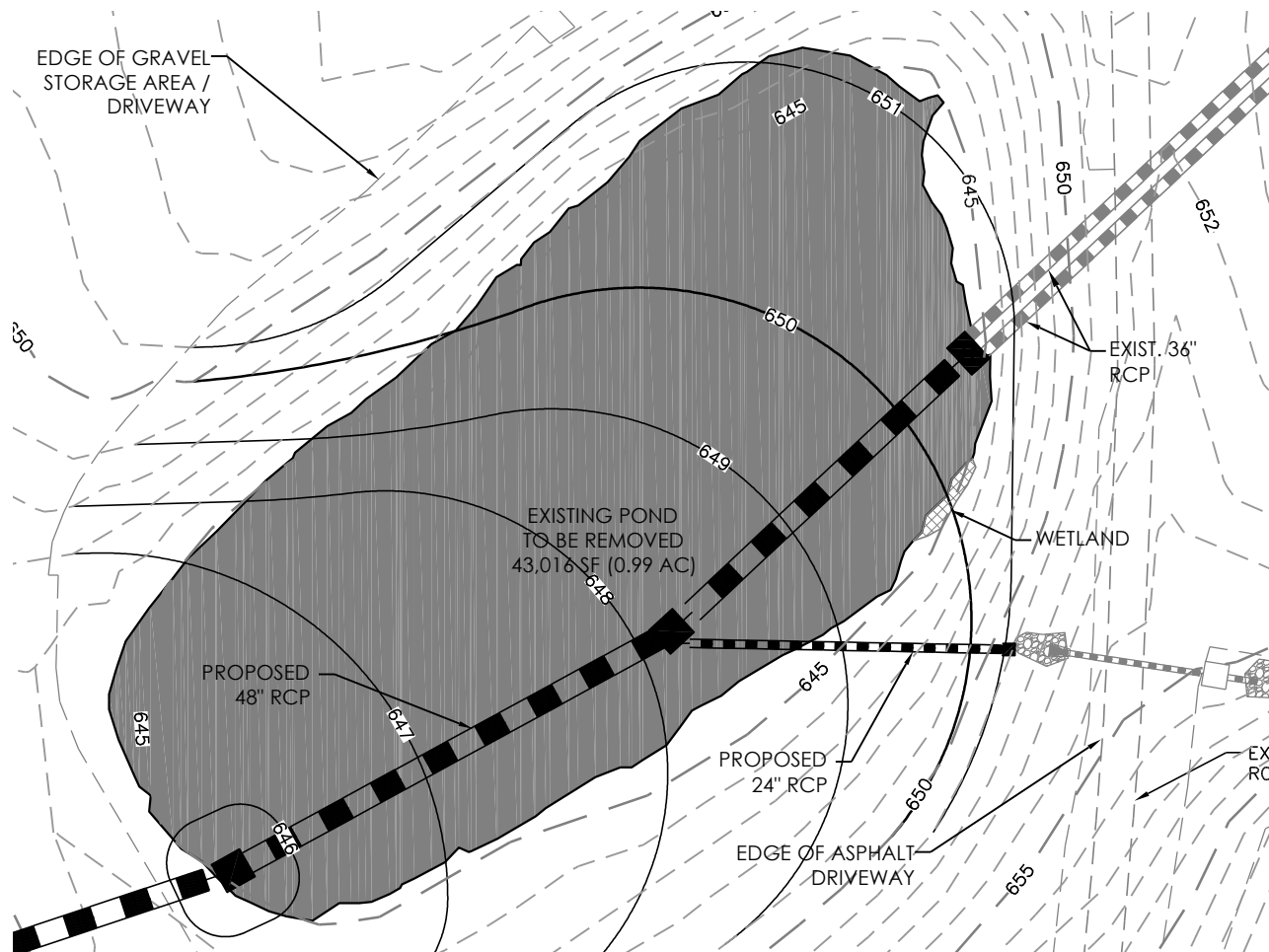


REFERENCE: USGS Topographic Map; Concord, North Carolina Quadrangle; dated 1969 (photo-revised 1987).



FIGURE NUMBER:	1	SITE LOCATION MAP Piedmont Block Company 106 Old Davidson Place NW Concord, North Carolina	
PROJECT NUMBER:	ENCH160010.00		
SCALE:	1"=2,000'		



LOCATION	IMPACT TYPE	OPEN WATER IMPACT	STREAM IMPACT	WETLAND IMPACT
P-1	OPEN WATER	43,016 SF	NA	NA
TOTAL		43,016 SF	NA	NA

IMPACT LEGEND	
	OPEN WATER
	STREAM
	WETLAND

SCALE: 1" = 60'

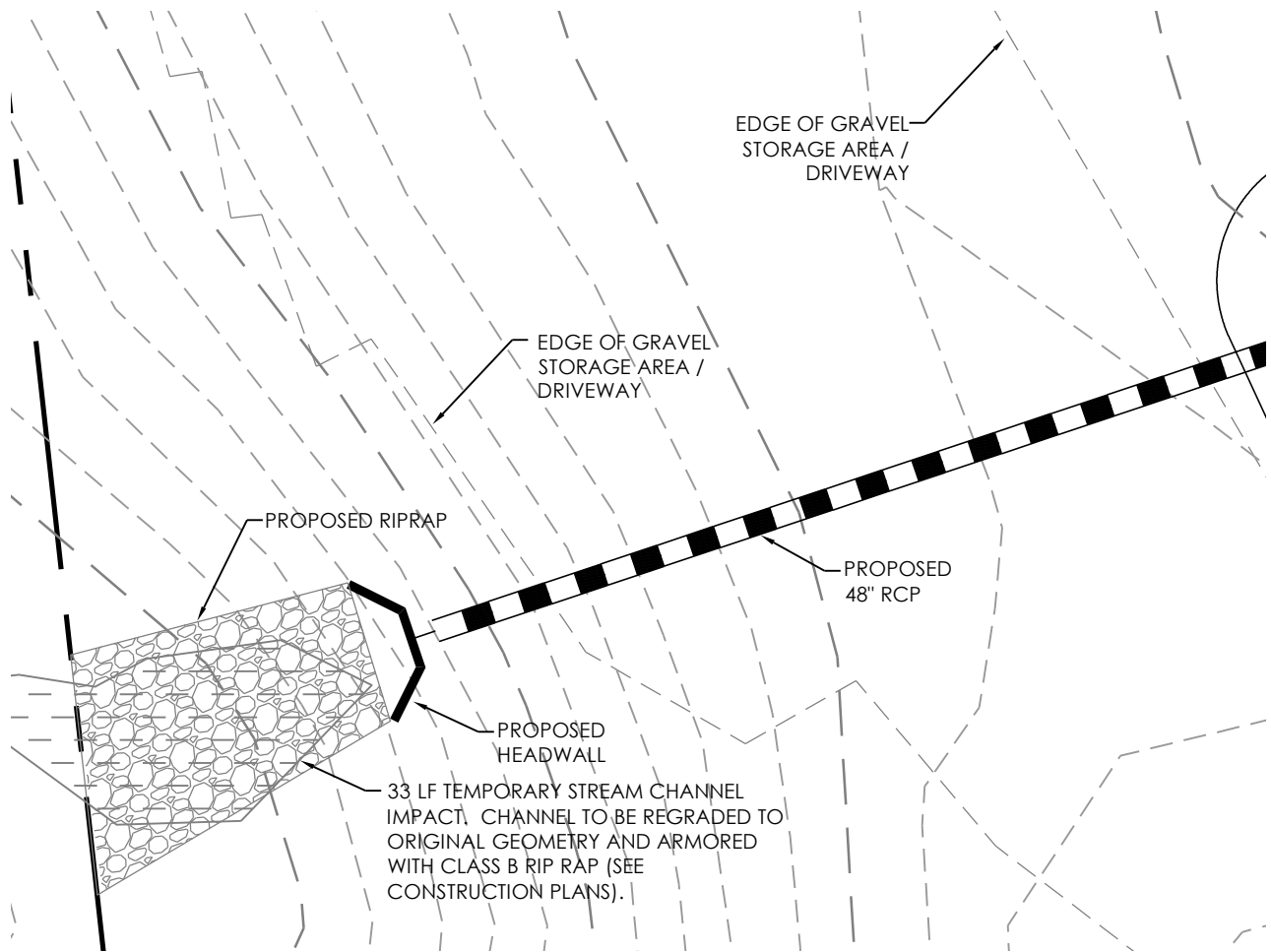
SUBMITTAL: DRAWN BY: CHECKED BY: DATE:
1st SUBMITTAL TMB LML 2014.04.14

underfoot
ENGINEERING
1149 EXECUTIVE CIRCLE
CARY, NC 27511
P:919.576.9733


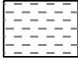

NCBELS # C-3847

PIEDMONT BLOCK -
STORAGE AREA EXPANSION
IMPACT MAPPING
CONCORD, NC

3 of 5



LOCATION	IMPACT TYPE	OPEN WATER IMPACT	STREAM IMPACT	WETLAND IMPACT
S-1	STREAM	NA	33 LF	NA
TOTAL		NA	33 LF	NA

IMPACT LEGEND	
	OPEN WATER
	STREAM
	WETLAND

SCALE: 1" = 20'

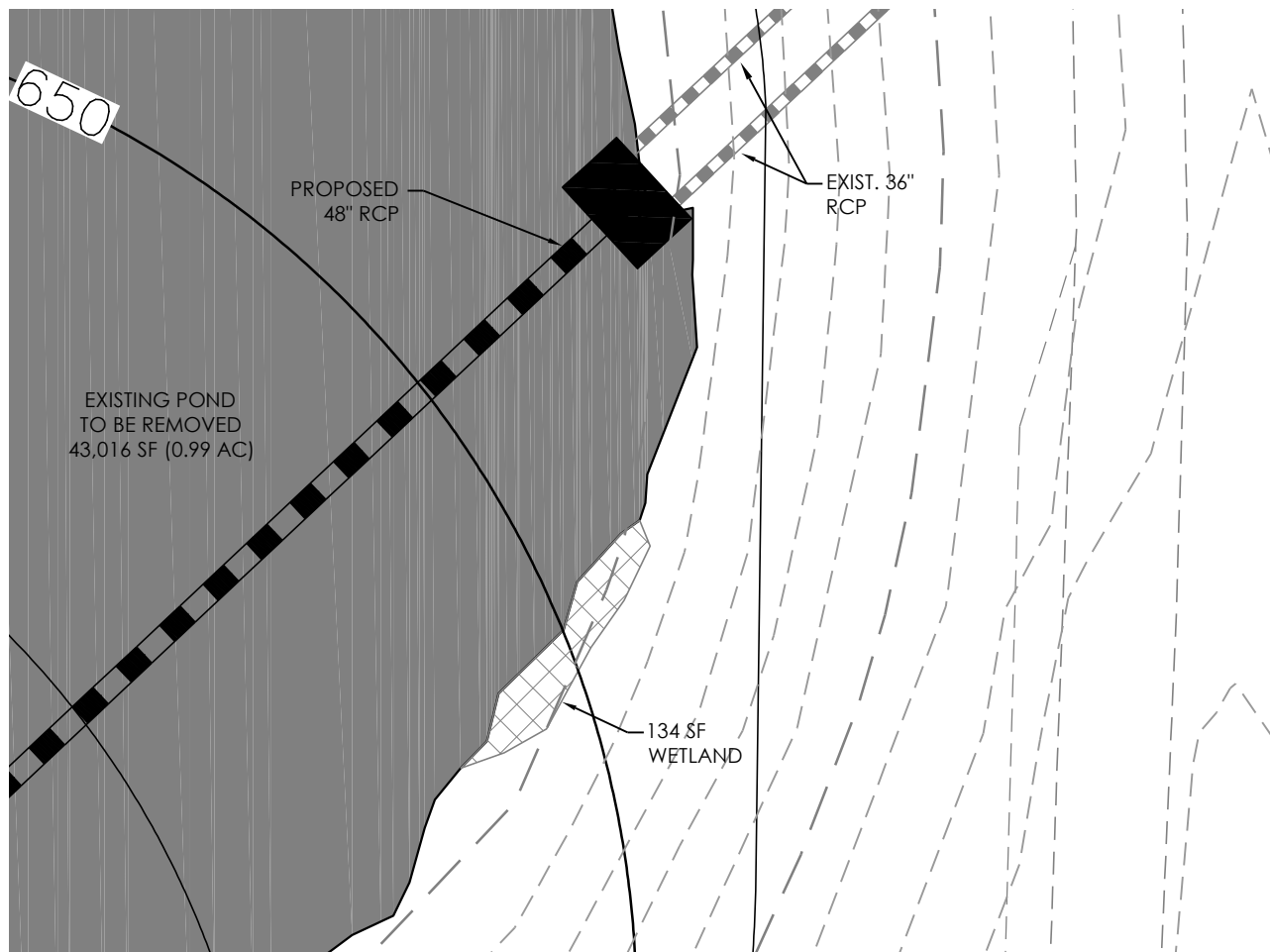
SUBMITTAL: DRAWN BY: CHECKED BY: DATE:
 1st SUBMITTAL TMB LML 2014.04.14

underfoot
 ENGINEERING
 1149 EXECUTIVE CIRCLE
 CARY, NC 27511
 P:919.576.9733

NCBELS # C-3847

PIEDMONT BLOCK -
 STORAGE AREA EXPANSION
 IMPACT MAPPING
 CONCORD, NC

4 of 5



LOCATION	IMPACT TYPE	OPEN WATER IMPACT	STREAM IMPACT	WETLAND IMPACT
W-1	WETLAND	NA	NA	134 SF
TOTAL		NA	NA	134 SF

IMPACT LEGEND	
	OPEN WATER
	STREAM
	WETLAND

SCALE: 1" = 20'

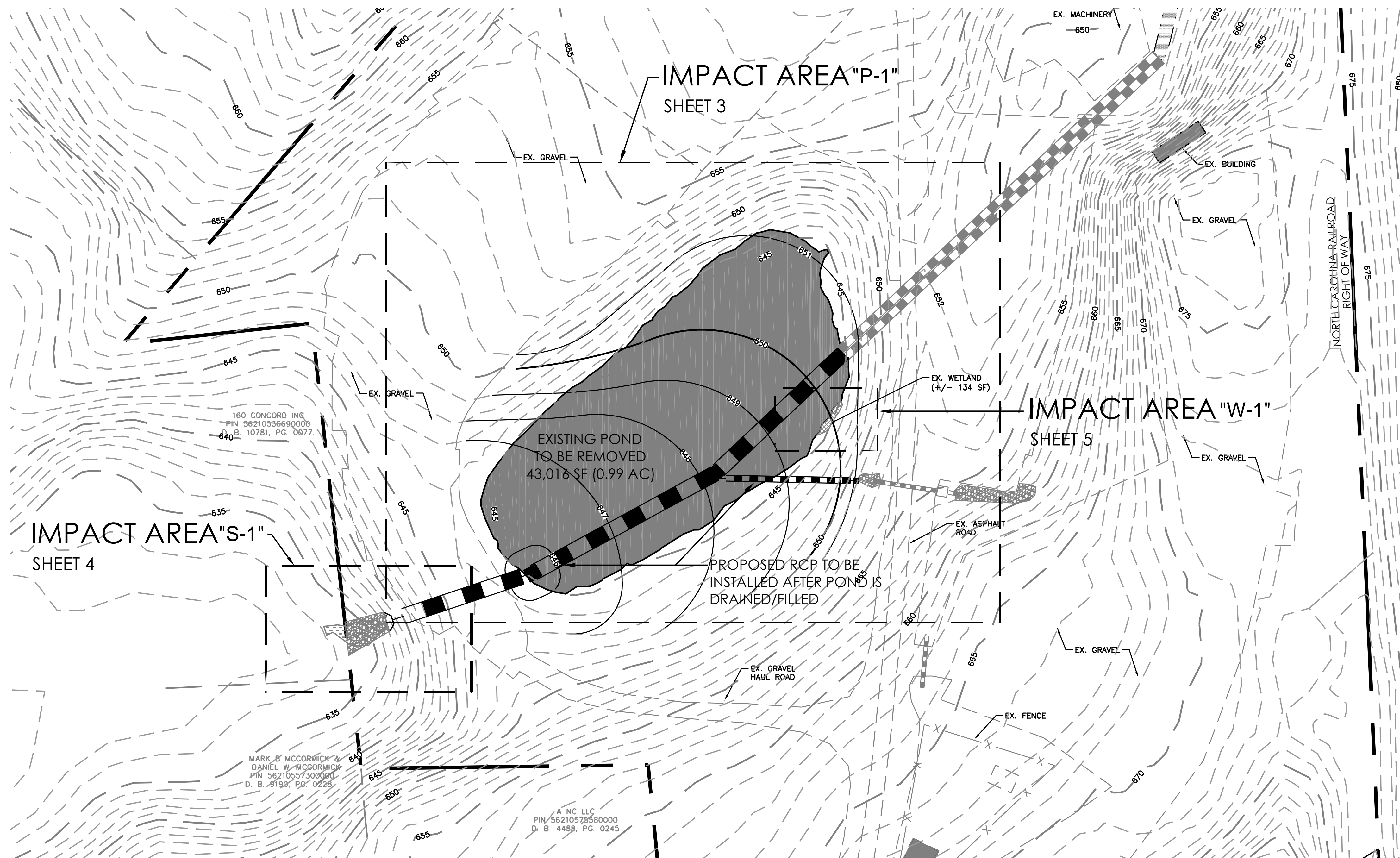
SUBMITTAL:	DRAWN BY:	CHECKED BY:	DATE:
1st SUBMITTAL	TMB	LML	2014.04.14

underfoot
ENGINEERING
1149 EXECUTIVE CIRCLE
CARY, NC 27511
P:919.576.9733

NCBELS # C-3847

PIEDMONT BLOCK -
STORAGE AREA EXPANSION
IMPACT MAPPING
CONCORD, NC

5 of 5

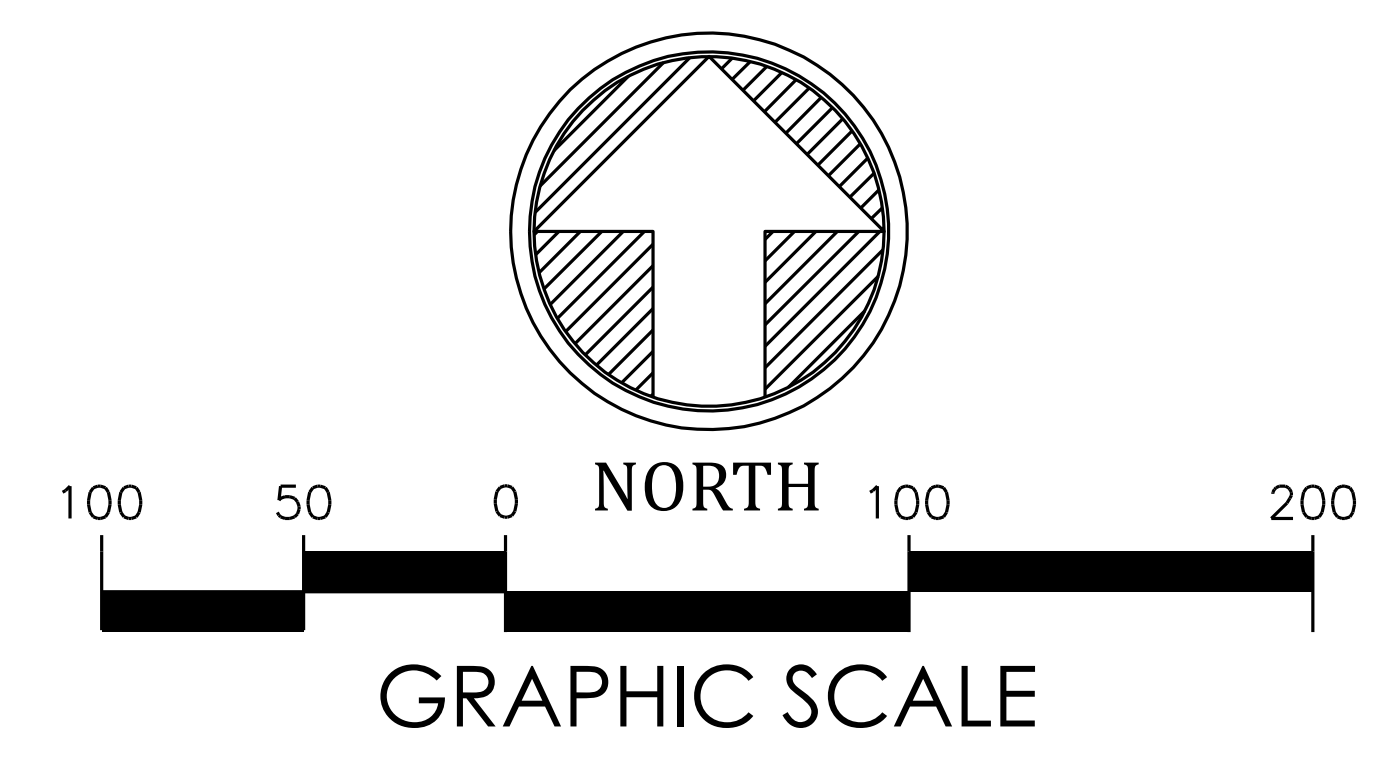
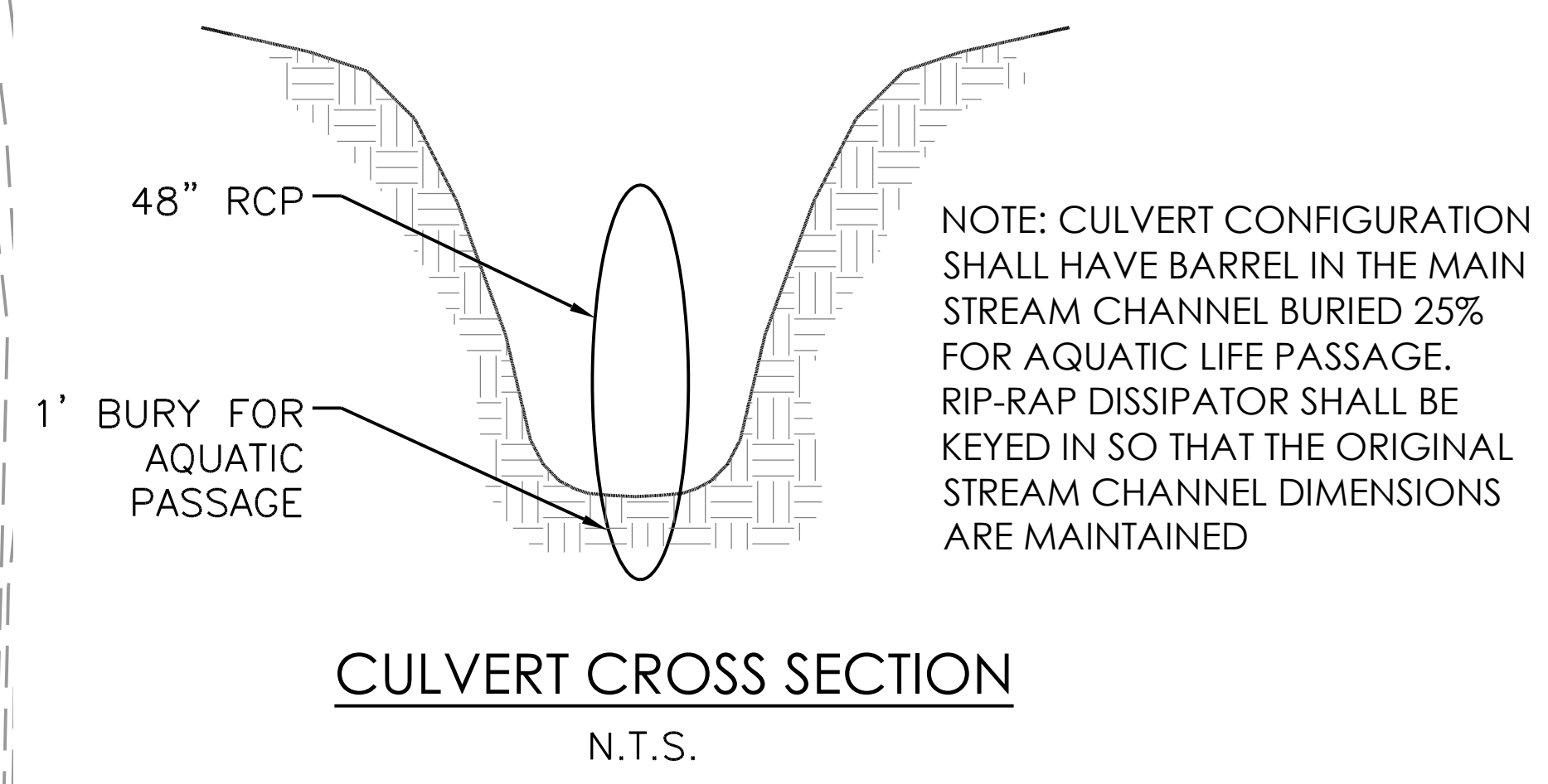


LOCATION	IMPACT TYPE	OPEN WATER IMPACTS	STREAM IMPACT	WETLAND IMPACT
P-1	OPEN WATER	43,016 SF	NA	NA
S-1	STREAM	NA	33 LF	NA
W-1	WETLAND	NA	NA	134 SF
TOTAL		43,016 SF	33 LF	134 SF

IMPACT LEGEND

- OPEN WATER
- STREAM
- WETLAND

IMPACT NOTES
1. POND, STREAM & WETLAND DELINEATION PREPARED BY THE EI GROUP AND SURVEYED BY RIBELIN LAND SURVEYING, DATED: 09-27-2016



underfoot
ENGINEERING

1149 EXECUTIVE CIRCLE
CARY, NC 27511
P:919.576.9733

NCBELS # C-3847

PIEDMONT BLOCK -
STORAGE AREA EXPANSION
IMPACT MAPPING
CONCORD, NC

OVERALL IMPACT MAP

SUBMITTAL:	DRAWN BY:	CHECKED BY:	DATE:
1st SUBMITTAL	TMB	LML	2017.04.14