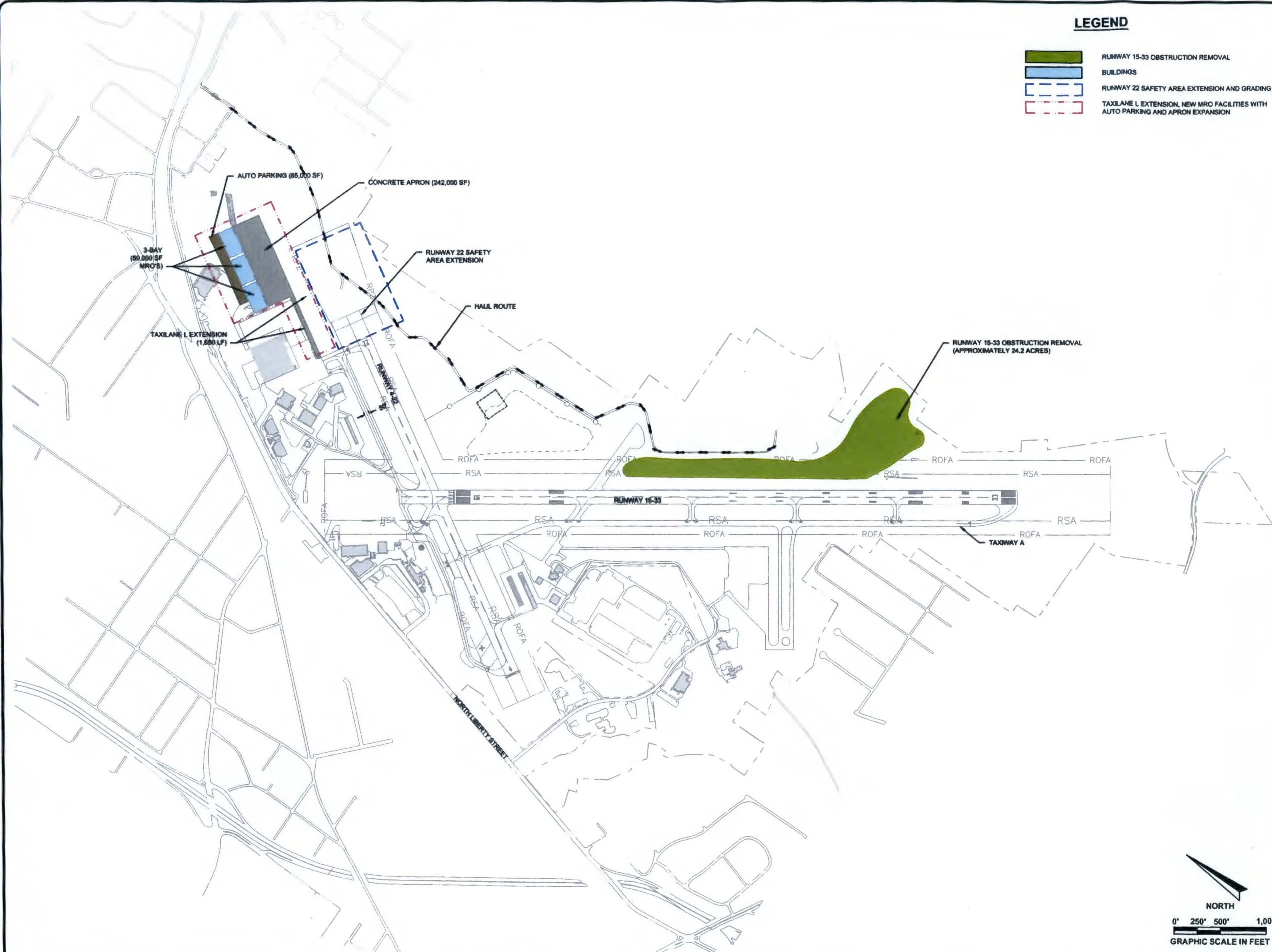


P:\2016\2016.130.01 - SMITH REYNOLDS EA\2016.130.01-PROPOSED-OPTION 4 - 2-13-18.DWG 2/13/2018



### LEGEND

- RUNWAY 15-33 OBSTRUCTION REMOVAL
- BUILDINGS
- RUNWAY 22 SAFETY AREA EXTENSION AND GRADING
- TAXILANE L EXTENSION, NEW MRO FACILITIES WITH AUTO PARKING AND APRON EXPANSION

AIRPORT COMMISSION OF FORSYTH COUNTY  
SMITH REYNOLDS AIRPORT



**AVCON, INC.**  
ENGINEERS & PLANNERS  
MALLARD CREEK BL. SUITE 100  
8004 CLIFF CAMERON DRIVE • CHARLOTTE, N.C. 28269  
OFFICE: (704) 554-0038  
www.avconinc.com

**ISSUED FOR BID  
NOT RELEASED FOR  
CONSTRUCTION**

**SMITH REYNOLDS  
AIRPORT  
WINSTON-SALEM  
NORTH CAROLINA**

KEY PLAN

**PREFERRED  
ALTERNATE**

ATTENTION:  
THIS DOCUMENT CONTAINS PRIVILEGED AND PROPRIETARY INFORMATION, ALL OF WHICH IS EXPRESSLY PROVIDED BY AVCON, INC. FOR USE BY THE INTENDED RECIPIENT, AND FOR A SPECIFIC PURPOSE. WITHOUT THE EXPRESS WRITTEN CONSENT OF AVCON, INC. ANY DISTRIBUTION, REPRODUCTION, OR OTHER USE OF THIS DOCUMENT, IN WHOLE OR IN PART, IS STRICTLY PROHIBITED.

SCALE: AS NOTED

REVISIONS:			
NO.	DATE	BY	DESCRIPTION

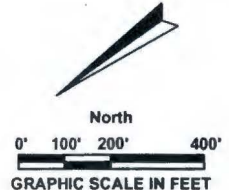
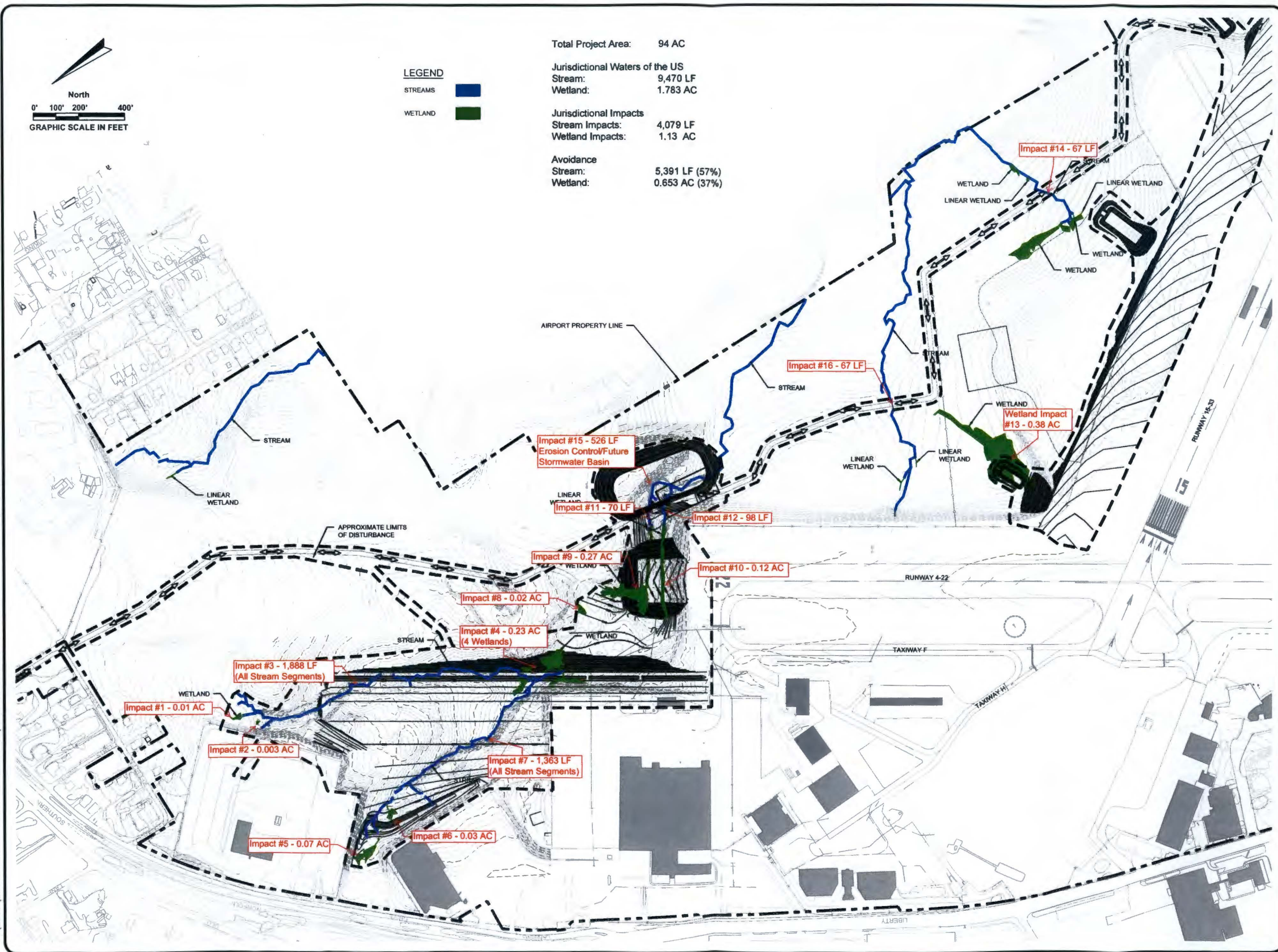
DESIGNED BY: J.M.M.  
DRAWN BY: A.M.T.  
CHECKED BY: J.M.M.  
APPROVED BY: M.A.D.  
DATE: FEBRUARY 2018

STATE LICENSE # N.C. C-2450  
PROJECT NO. 2017.130.03

**SHEET NUMBER**  
**Figure 3.0**



P:\2016\2016.130.01 - SMITH REYNOLDS EA\WETLAND-STREAM IMPACTS-REV7-11-18.DWG 7/11/2018



**LEGEND**  
STREAMS [Blue line symbol]  
WETLAND [Green area symbol]

Total Project Area: 94 AC  
Jurisdictional Waters of the US  
Stream: 9,470 LF  
Wetland: 1,783 AC  
Jurisdictional Impacts  
Stream Impacts: 4,079 LF  
Wetland Impacts: 1.13 AC  
Avoidance  
Stream: 5,391 LF (57%)  
Wetland: 0.653 AC (37%)

AIRPORT COMMISSION OF FORSYTH COUNTY  
SMITH REYNOLDS AIRPORT

**AVCON, INC.**  
ENGINEERS & PLANNERS  
MALLARD CREEK BL. SUITE 152  
8004 CLIFF CAMERON DRIVE #CHARLOTTE, NC 28269  
OFFICE: (704) 554-0058  
www.avconinc.com

KEY PLAN

**ENVIRONMENTAL  
ASSESSMENT**

**SMITH REYNOLDS AIRPORT  
WINSTON-SALEM  
NORTH CAROLINA**

ATTENTION:  
THIS DOCUMENT CONTAINS PRIVILEGED AND PROPRIETARY INFORMATION, ALL OF WHICH IS EXPRESSLY PROVIDED BY AVCON, INC. FOR USE BY THE INTENDED RECIPIENT, AND FOR A SPECIFIC PURPOSE. WITHOUT THE EXPRESS WRITTEN CONSENT OF AVCON, INC. ANY DISTRIBUTION, REPRODUCTION, OR OTHER USE OF THIS DOCUMENT, IN WHOLE OR IN PART, IS STRICTLY PROHIBITED.

SCALE: AS NOTED

REVISIONS:			
NO.	DATE	BY	DESCRIPTION

DESIGNED BY:  
DRAWN BY:  
CHECKED BY:  
APPROVED BY:  
DATE:

STATE LICENSE NO. N.C. C-2450  
AVCON PROJECT NO.

**SHEET  
NUMBER  
FIGURE 3.1**