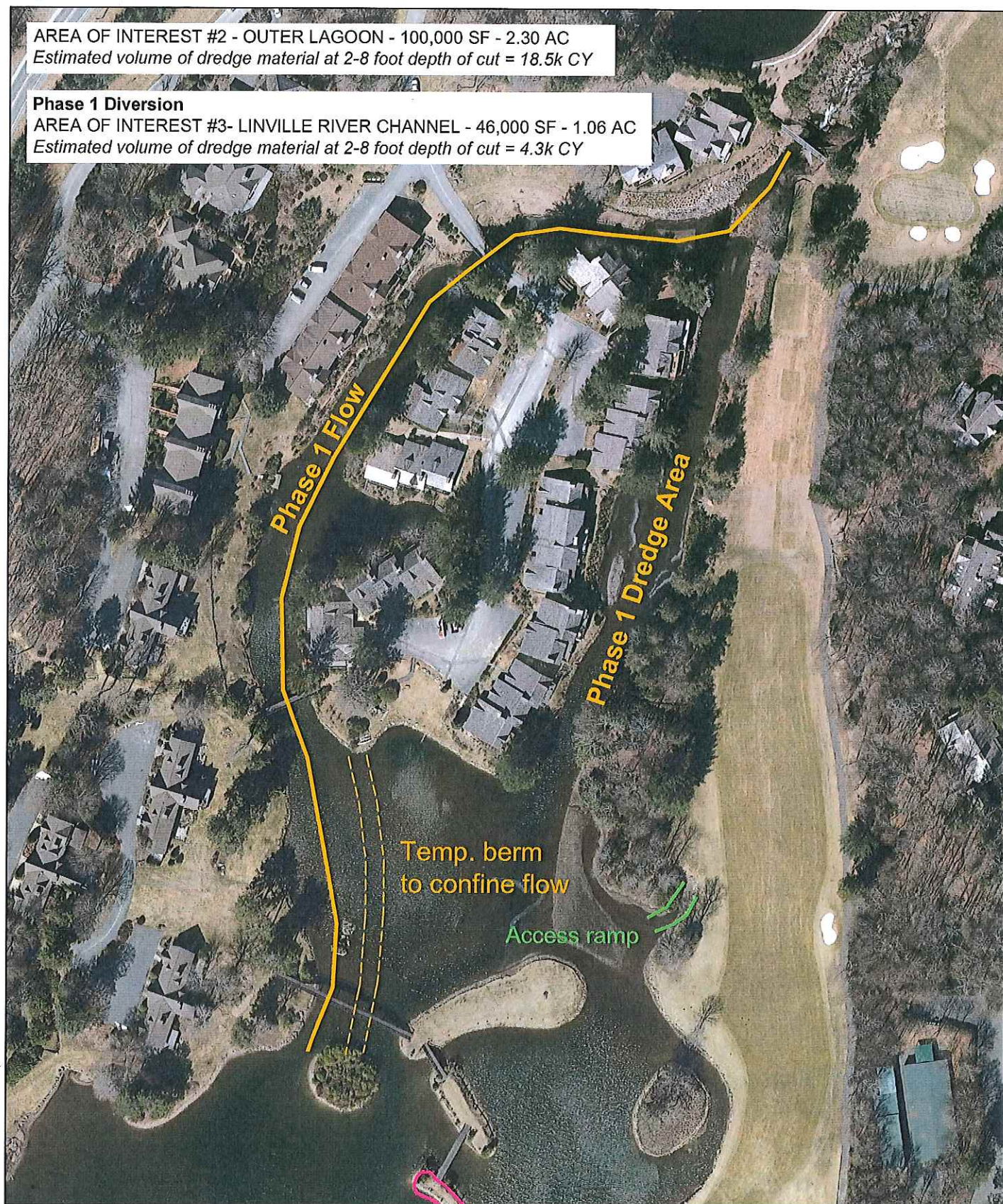


AREA OF INTEREST #2 - OUTER LAGOON - 100,000 SF - 2.30 AC
Estimated volume of dredge material at 2-8 foot depth of cut = 18.5k CY

Phase 1 Diversion

AREA OF INTEREST #3- LINVILLE RIVER CHANNEL - 46,000 SF - 1.06 AC
Estimated volume of dredge material at 2-8 foot depth of cut = 4.3k CY



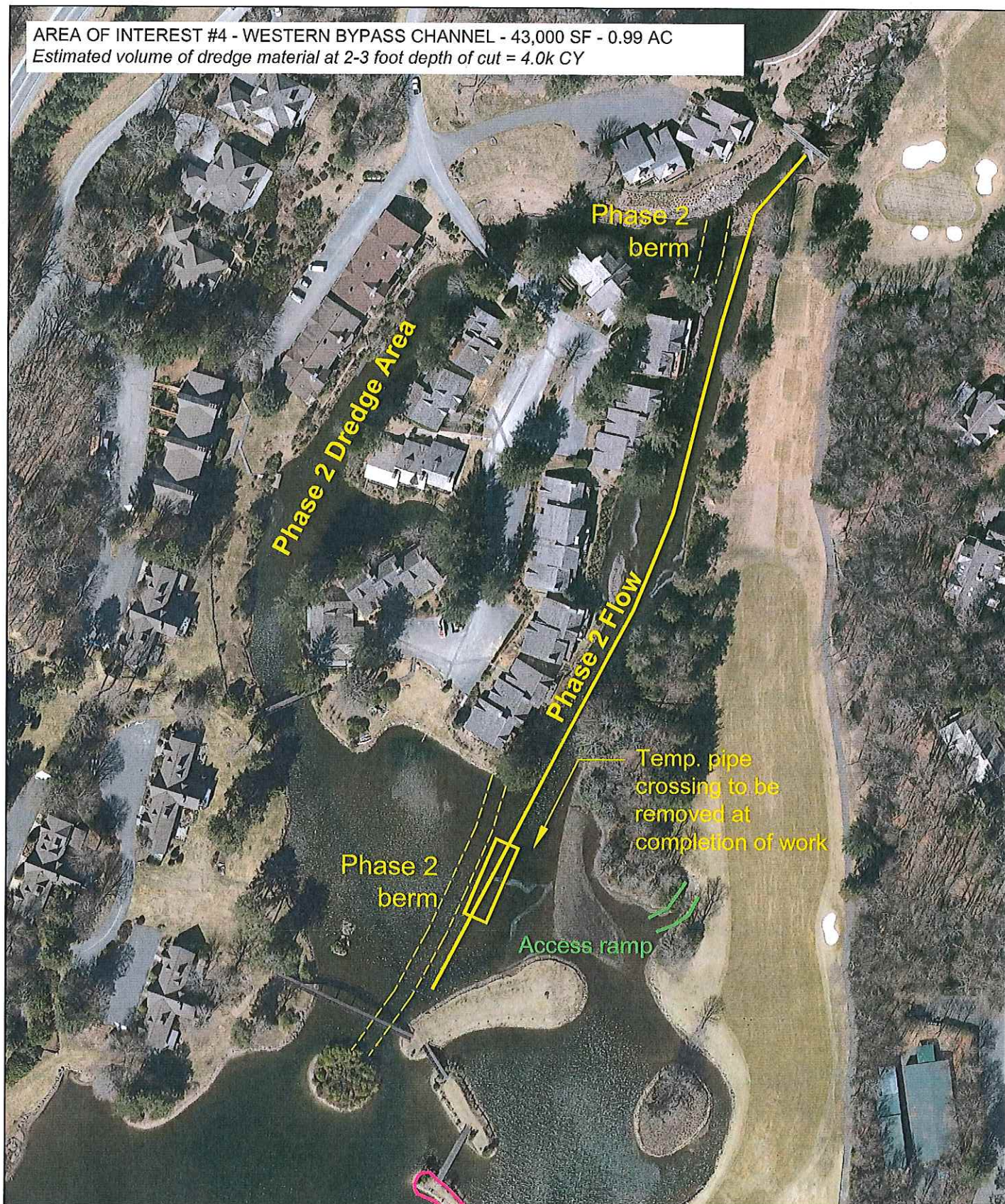
Area of Interest #2 & 3
JUNE 15, 2017

PROJECT #
15.01109

GRANDFATHER GOLF and
COUNTRY CLUB
AVERY COUNTY, NORTH CAROLINA

McGill
ASSOCIATES
ENVIRONMENTAL • FINANCE
468 NEW MARKET BLVD. STE B BOONE, NC 28607 PH. (828) 386-1920

AREA OF INTEREST #4 - WESTERN BYPASS CHANNEL - 43,000 SF - 0.99 AC
Estimated volume of dredge material at 2-3 foot depth of cut = 4.0k CY



Area of Interest #4
JUNE 15, 2017

PROJECT #
15.01109

GRANDFATHER GOLF and
COUNTRY CLUB
AVERY COUNTY, NORTH CAROLINA

McGill
ASSOCIATES
ENVIRONMENTAL • FINANCE
468 NEW MARKET BLVD. STE B BOONE, NC 28607 PH. (828) 386-1920



OVERVIEW MAP
JUNE 15, 2017

PROJECT #
15.01109

GRANDFATHER GOLF AND COUNTRY CLUB LOCH DORNIE LAKE DREDGING PROJECT

AVERY COUNTY,
NORTH CAROLINA

McGill
ASSOCIATES
ENVIRONMENTAL • FINANCE
468 NEW MARKET BLVD, STE B ROONE, NC 28607 PH. (828) 386-1920