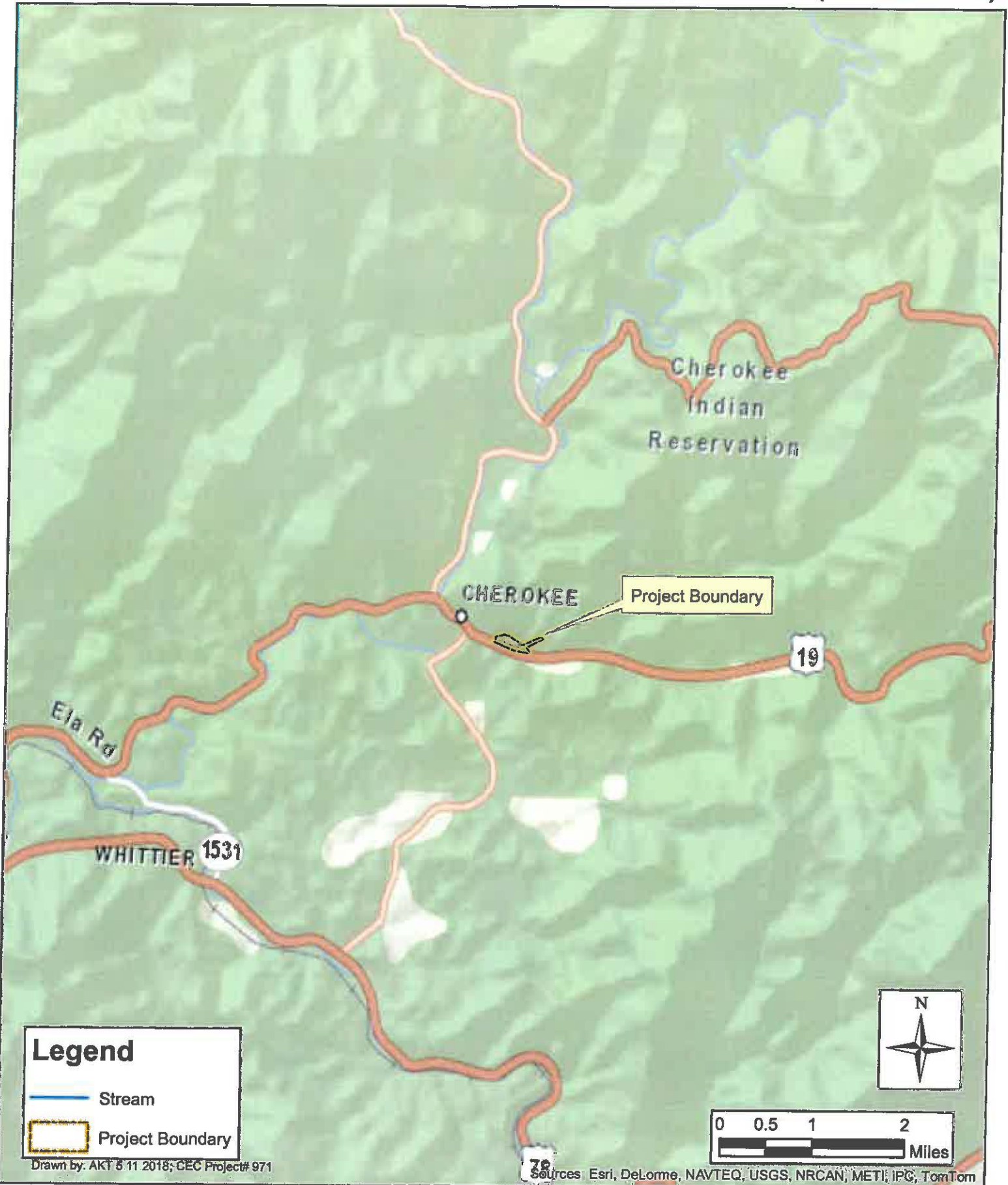


Harrah's Cherokee Casino Resort Expansion (+/- 26 AC)



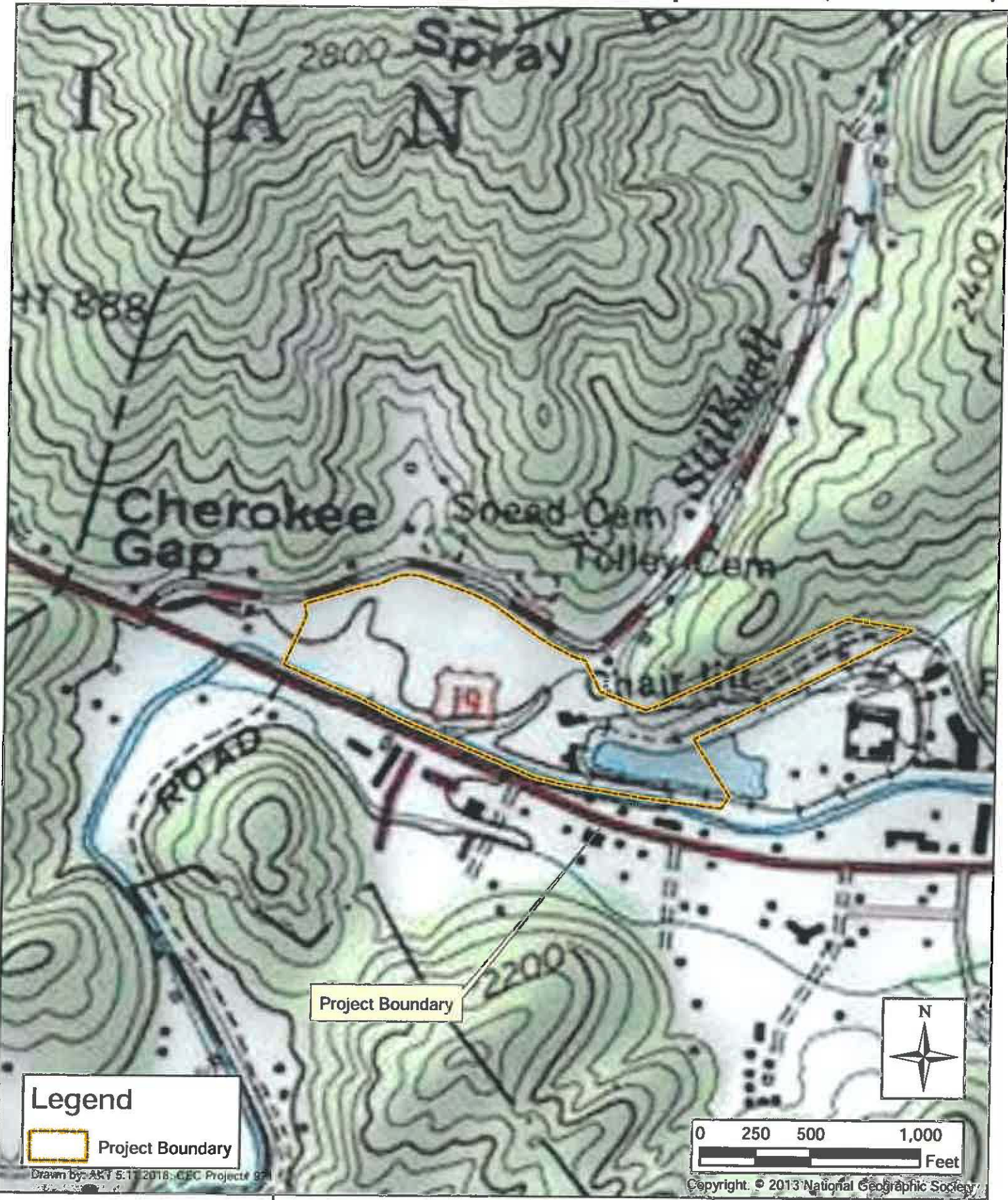
Jackson County,
North Carolina

ClearWater

32 Clayton Street
Asheville, North Carolina 28801

Vicinity Map
Figure 1

Harrah's Cherokee Casino Resort Expansion (+/- 26 AC)



Legend

 Project Boundary

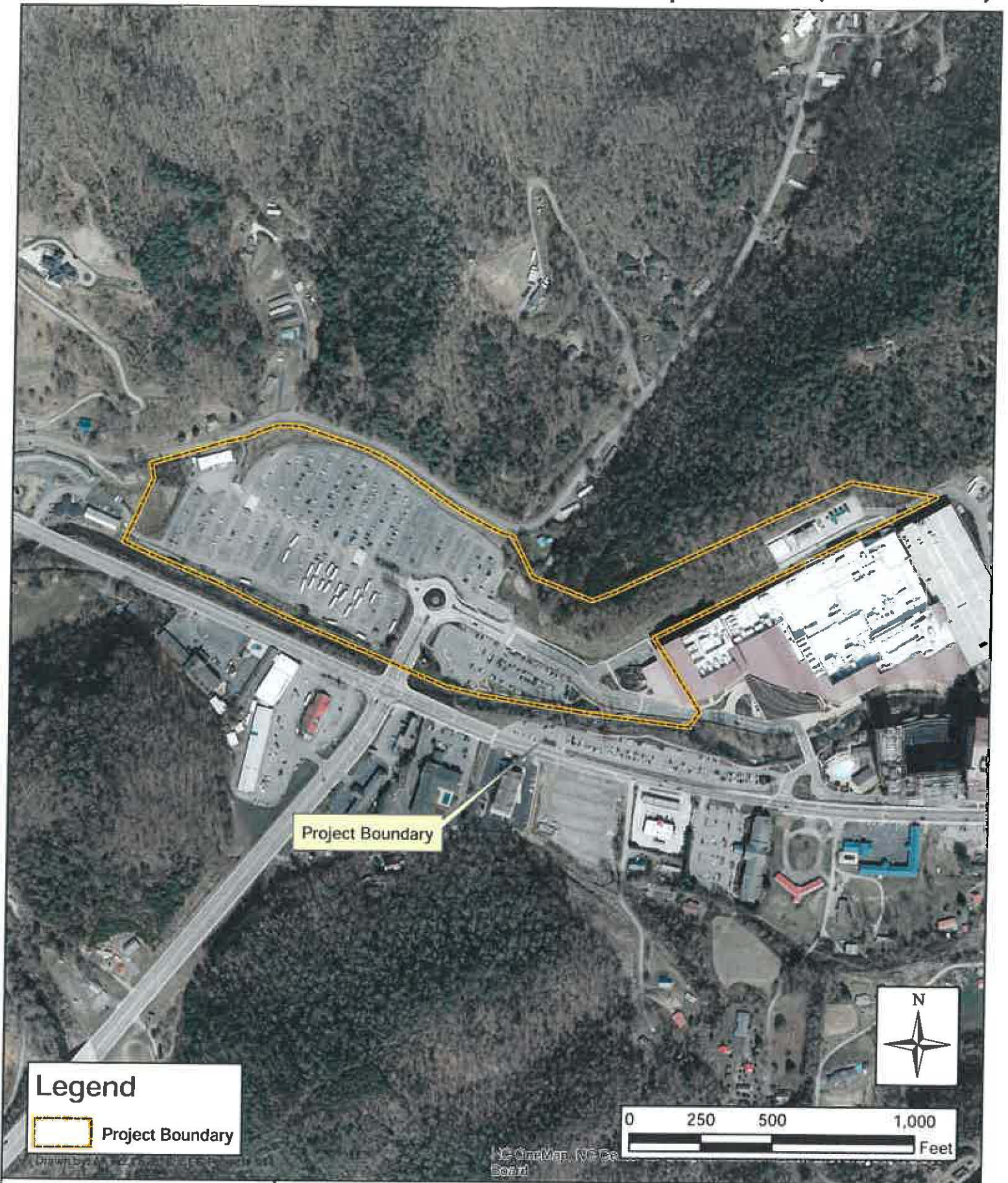
Jackson County,
North Carolina

ClearWater

32 Clayton Street
Asheville, North Carolina 28801

USGS Topographic Map
Whittier Quadrangle
Figure 2

Harrah's Cherokee Casino Resort Expansion (+/- 26 AC)



Legend

 Project Boundary

Jackson County,
North Carolina

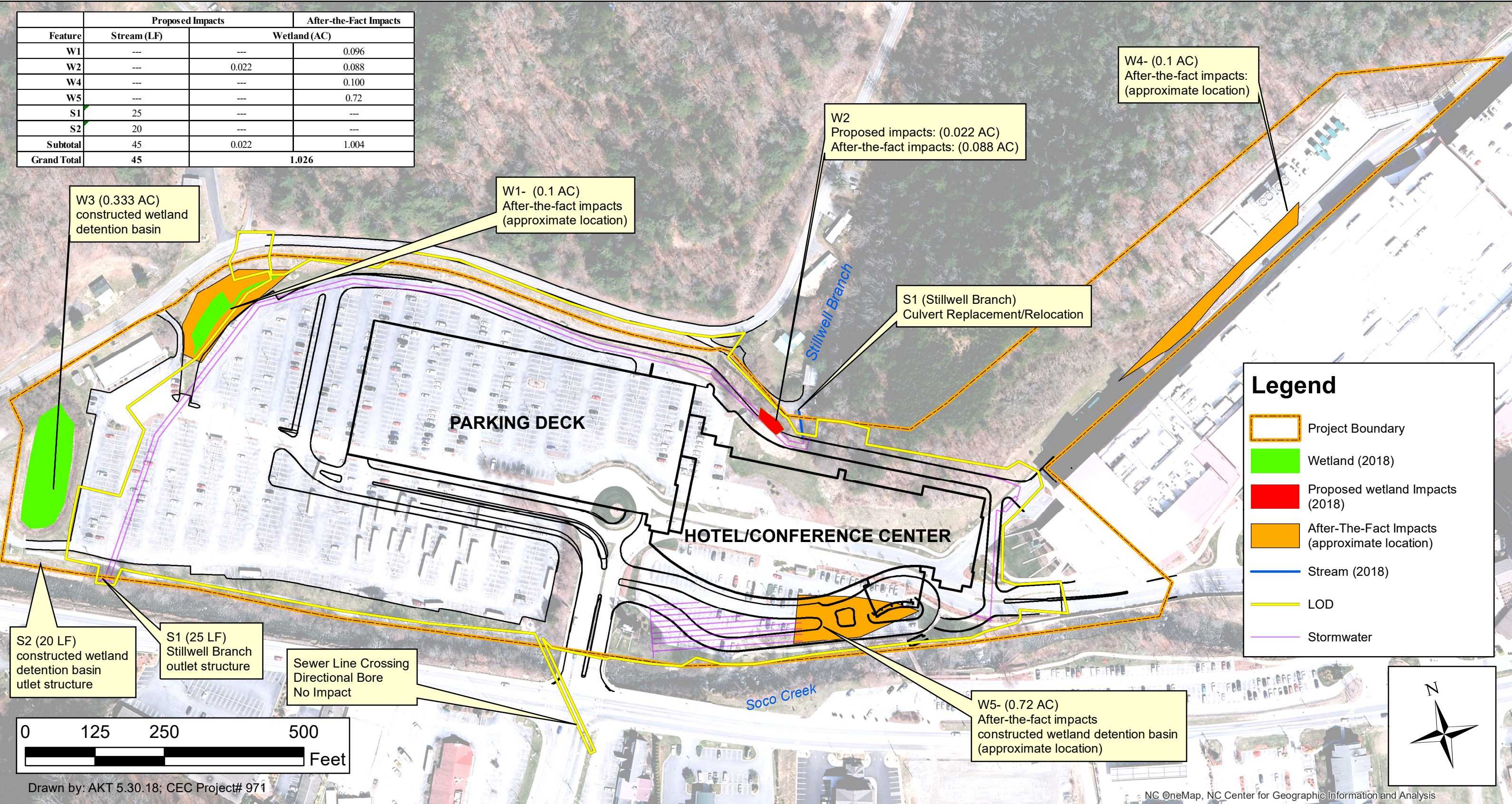
ClearWater

32 Clayton Street
Asheville, North Carolina 28801

Aerial Photograph
Figure 4

Harrah's Cherokee Casino Resort Expansion (+/- 26 AC)

Feature	Proposed Impacts		After-the-Fact Impacts
	Stream (LF)	Wetland (AC)	
W1	---	---	0.096
W2	---	0.022	0.088
W4	---	---	0.100
W5	---	---	0.72
S1	25	---	---
S2	20	---	---
Subtotal	45	0.022	1.004
Grand Total	45		1.026



Drawn by: AKT 5.30.18; CEC Project# 971

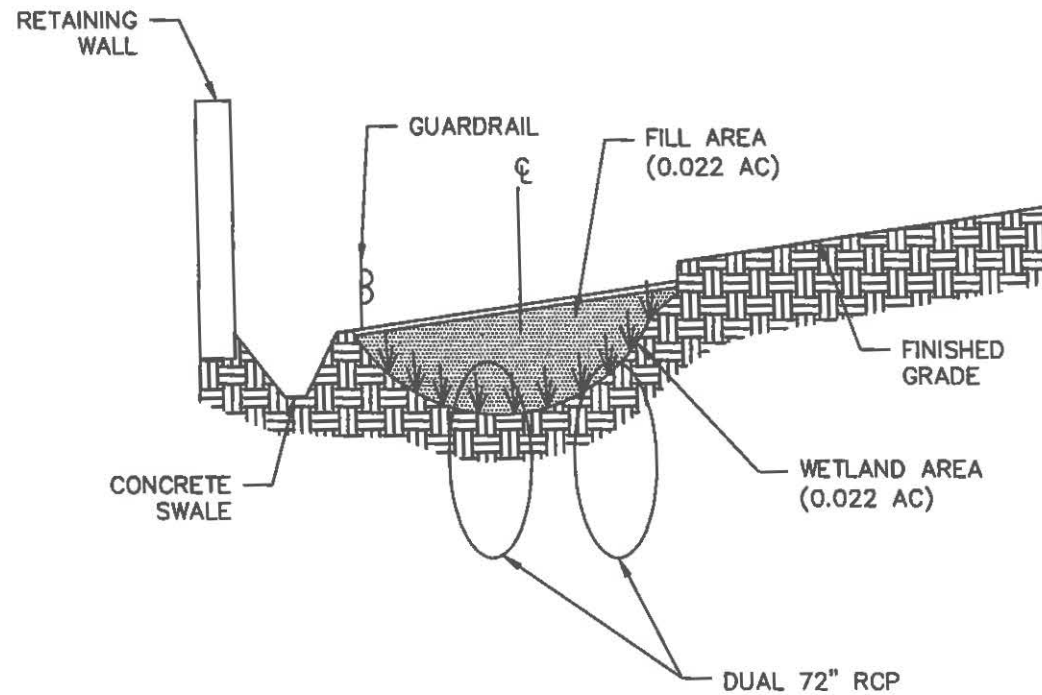
NC OneMap, NC Center for Geographic Information and Analysis

Jackson County,
North Carolina

ClearWater
32 Clayton Street
Asheville, North Carolina 28801

Impact Map

Figure 5



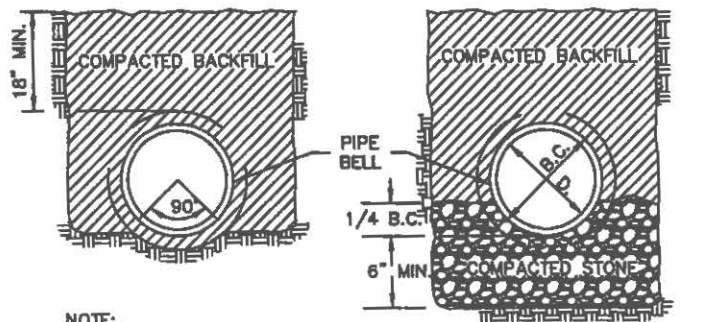
REVISIONS

WETLAND #2 FILL CROSS SECTION
FOR
HARRAH'S CHEROKEE CASINO RESORT EXPANSION
IN
CHEROKEE, NC

SCALE: NTS

C1

4D
ENGINEERING



NOTE:
CAREFULLY SHAPE TRENCH
BOTTOM FOR PIPE BELLS AND
PIPE RUNS. (ONLY USE FOR
DRY EARTHEN TRENCHES)

TYPE 1

NOTE:
APPLICABLE TO BOTH EARTH &
ROCK TRENCHES.

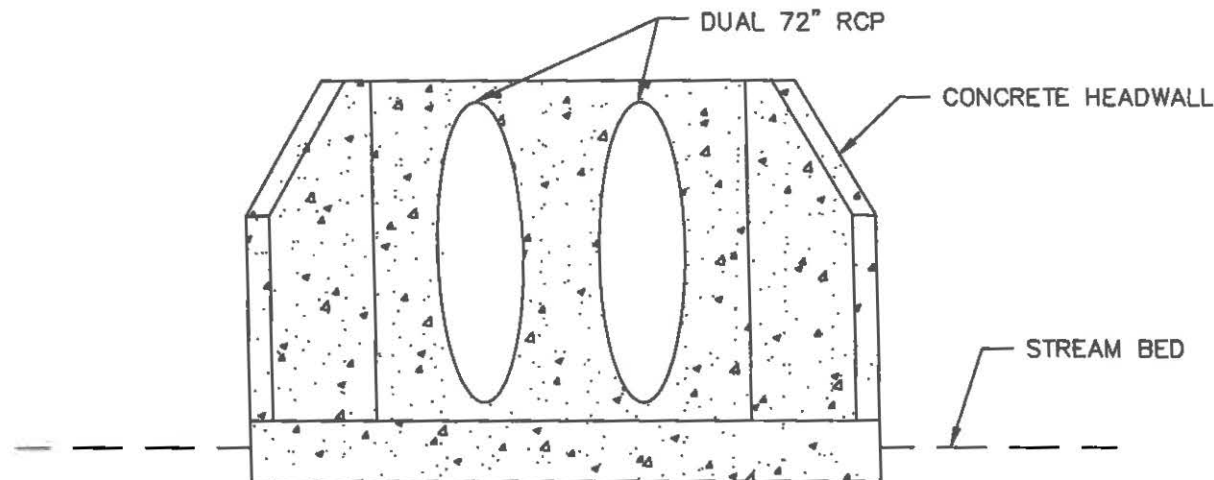
TYPE 2

RCP BEDDING DETAIL

NOT TO SCALE

NOTES:

1. THE CULVERT RELOCATION WILL BE CONSTRUCTED OFFLINE IN DRY AND COMPLETED PRIOR TO DIVERTING WATER FROM THE EXISTING TRIBUTARY INTO THE CULVERT.
2. THE DESIGN FOR THE STILLWELL BRANCH OUTLET IS NOT INTENDED TO ACCOMMODATE AQUATIC LIFE PASSAGE DUE TO THE SPAN OF THE RELOCATION. THE DOUBLE BARREL CULVERT WOULD SPAN 1,625 FEET OVER 27 FEET OF DROP, WITH 9 JUNCTION BOXES TO ACCOMMODATE THE CHANGE IN GRADE. THE OUTLET CONSISTS OF A CONCRETE HEADWALL WITH THE INVERT SET 6 INCHES ABOVE THE SOCO CREEK STREAMBED.



CROSS SECTION

NOT TO SCALE

REVISIONS

SOCO CREEK DISCHARGE CROSS SECTION AND DETAILS
FOR
HARRAH'S CHEROKEE CASINO RESORT EXPANSION
IN
CHEROKEE, NC

SCALE: NTS

C2

4D
ENGINEERING