

APPENDIX I

LOCKWOODS FOLLY INLET HISTORICAL AERIAL IMAGERY

The following images were scanned from air photography.
All images were georectified as close as they could be considering
the different angles and altitudes of each photo set through the years.
1938 & 1949 photography was not georectified and was only placed on a slide.

-Adam Faircloth
Cartographer
US Army Corps of Engineers
Wilmington District
910-251-4476
adam.g.faircloth@usace.army.mil

Lockwoods Folly Inlet



LOCKWOODS FOLLY INLET
1938

PHOTO PLATE V

April 5, 1938

Lockwoods Folly Inlet



LOCKWOODS FOLLY INLET

PHOTO PLATE VI

November 19, 1949

Lockwoods Folly Inlet



May 4, 1958

Lockwoods Folly Inlet



March 13, 1962

Lockwoods Folly Inlet



0

2,000 Feet

April 28, 1970

Lockwoods Folly Inlet



August 1971

Lockwoods Folly Inlet

0026

VT 83TR10 013
COAST F3... A600... UNIC
CV77MG

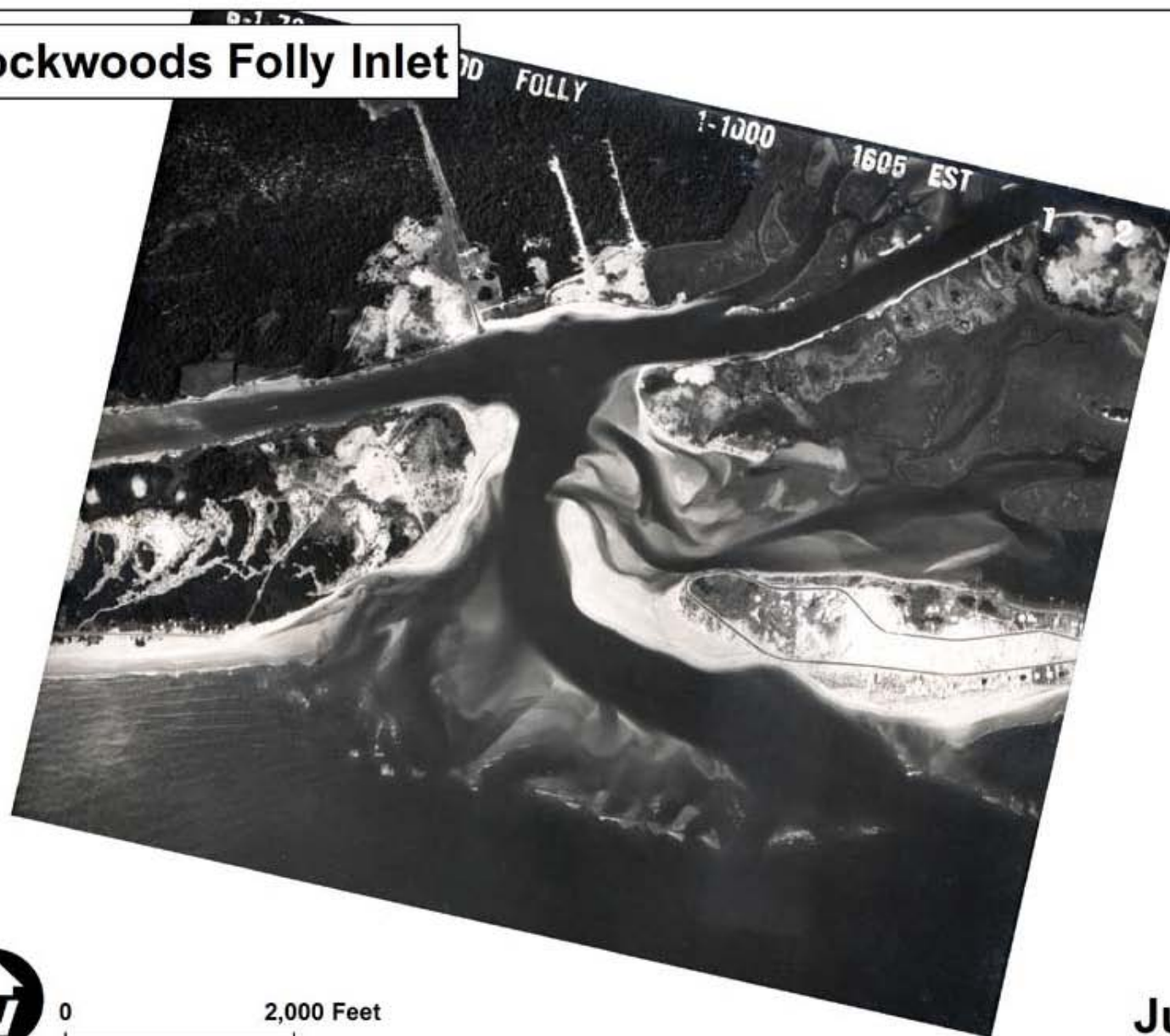


0

2,000 Feet

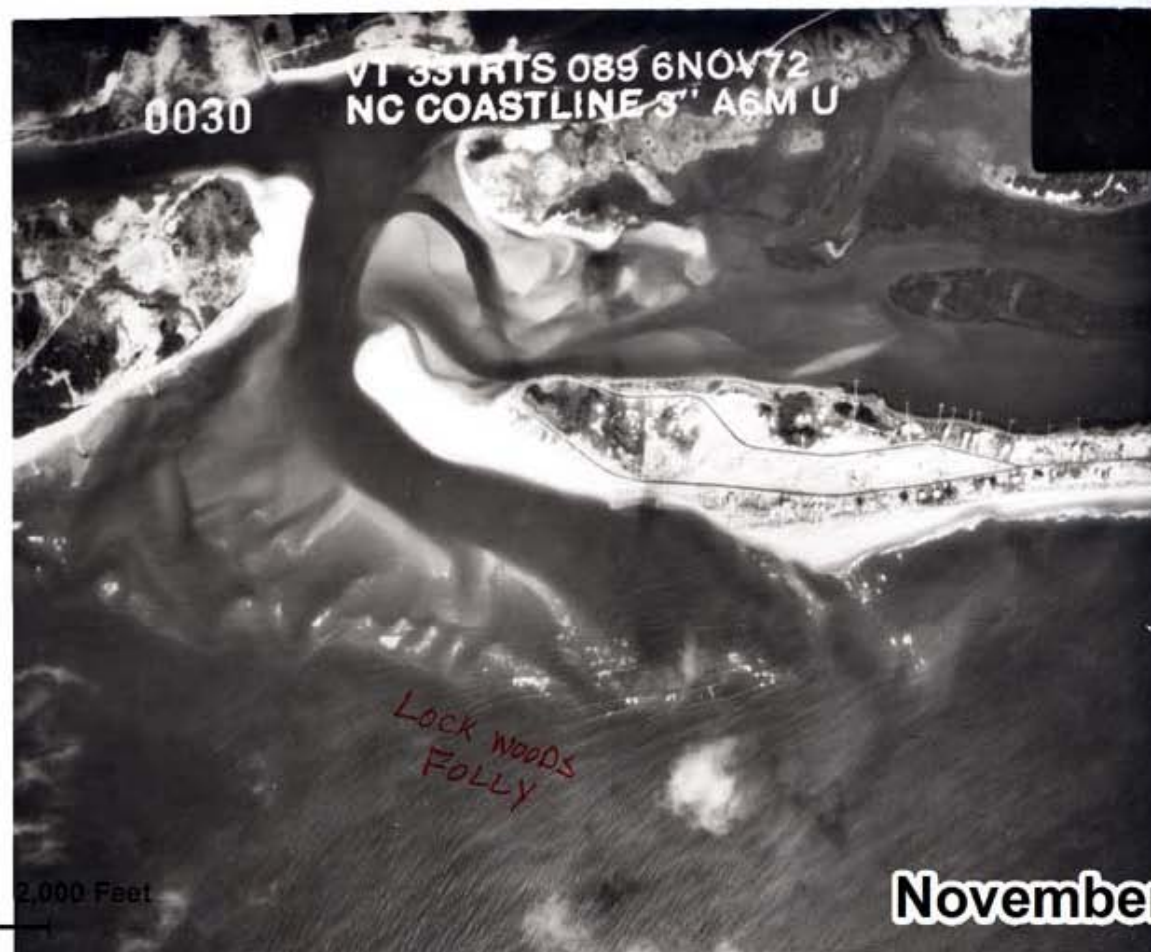
November 1, 1971

Lockwoods Folly Inlet



June 1, 1972

Lockwoods Folly Inlet



Lockwoods Folly Inlet

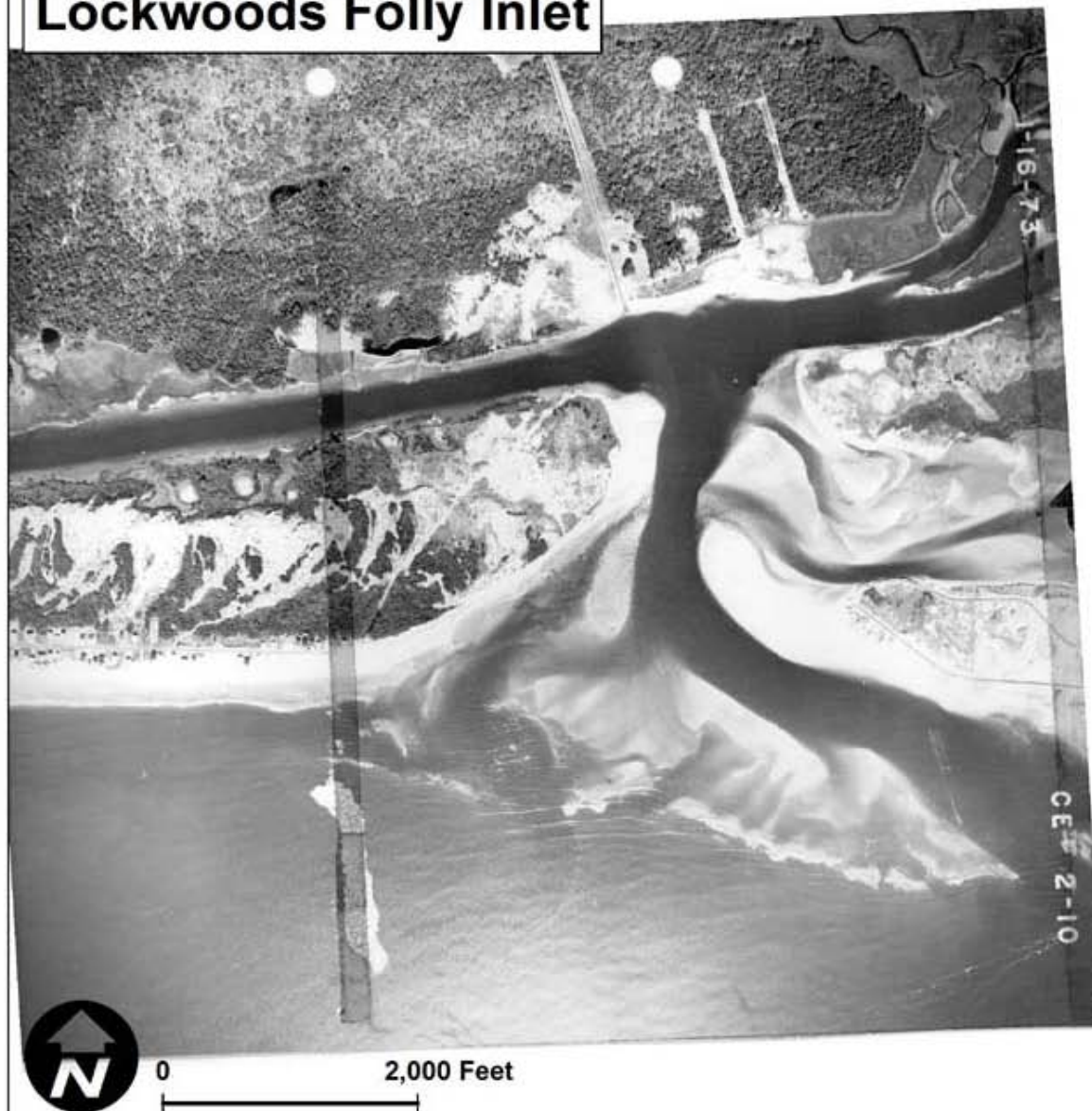


0

2,000 Feet

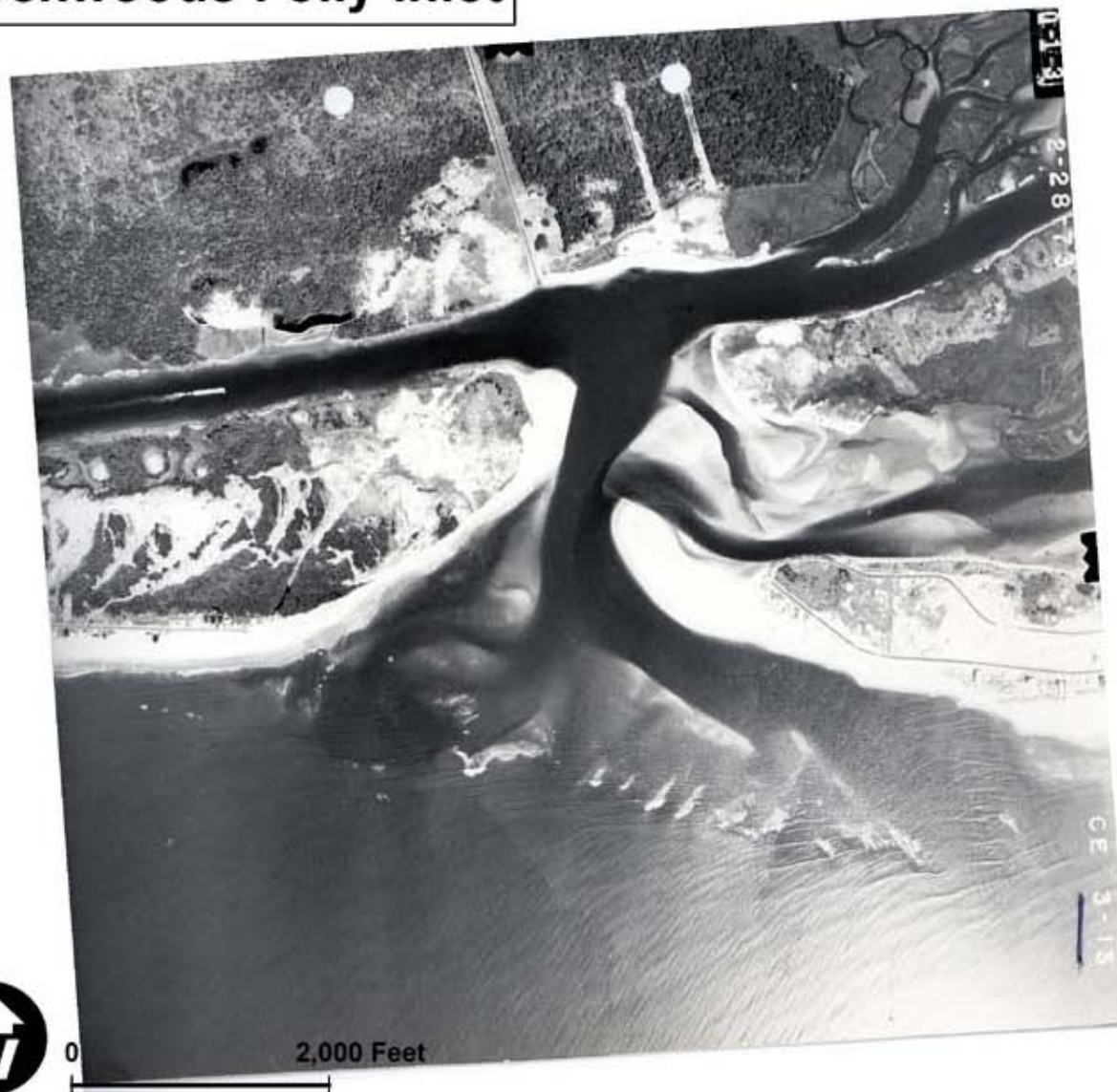
December 17, 1972

Lockwoods Folly Inlet



January 16, 1973

Lockwoods Folly Inlet



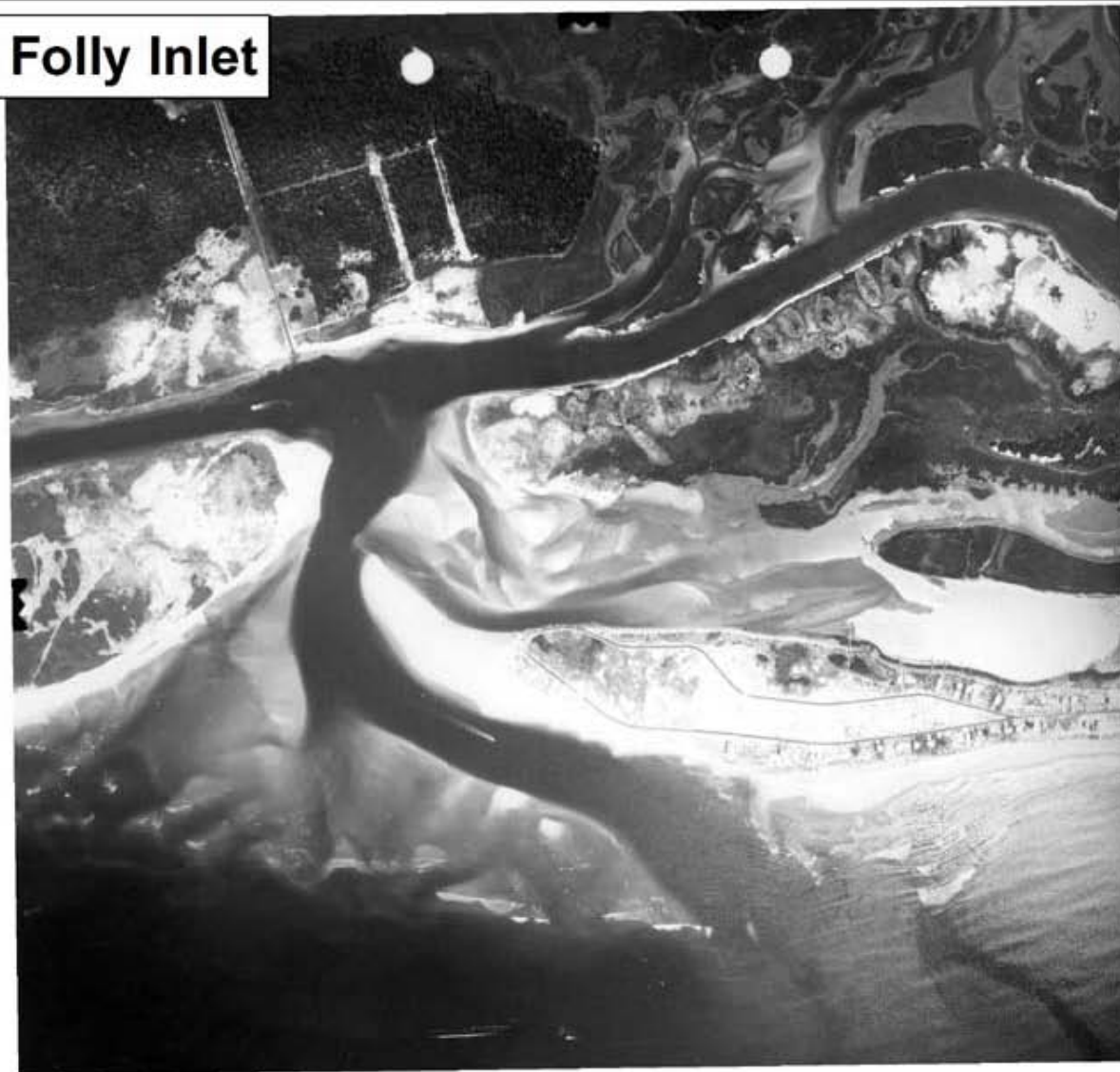
February 28, 1973

Lockwoods Folly Inlet



April 30, 1973

Lockwoods Folly Inlet



0

2,000 Feet

July 10, 1973

Lockwoods Folly Inlet



0

2,000 Feet

September 11, 1973

Lockwoods Folly Inlet

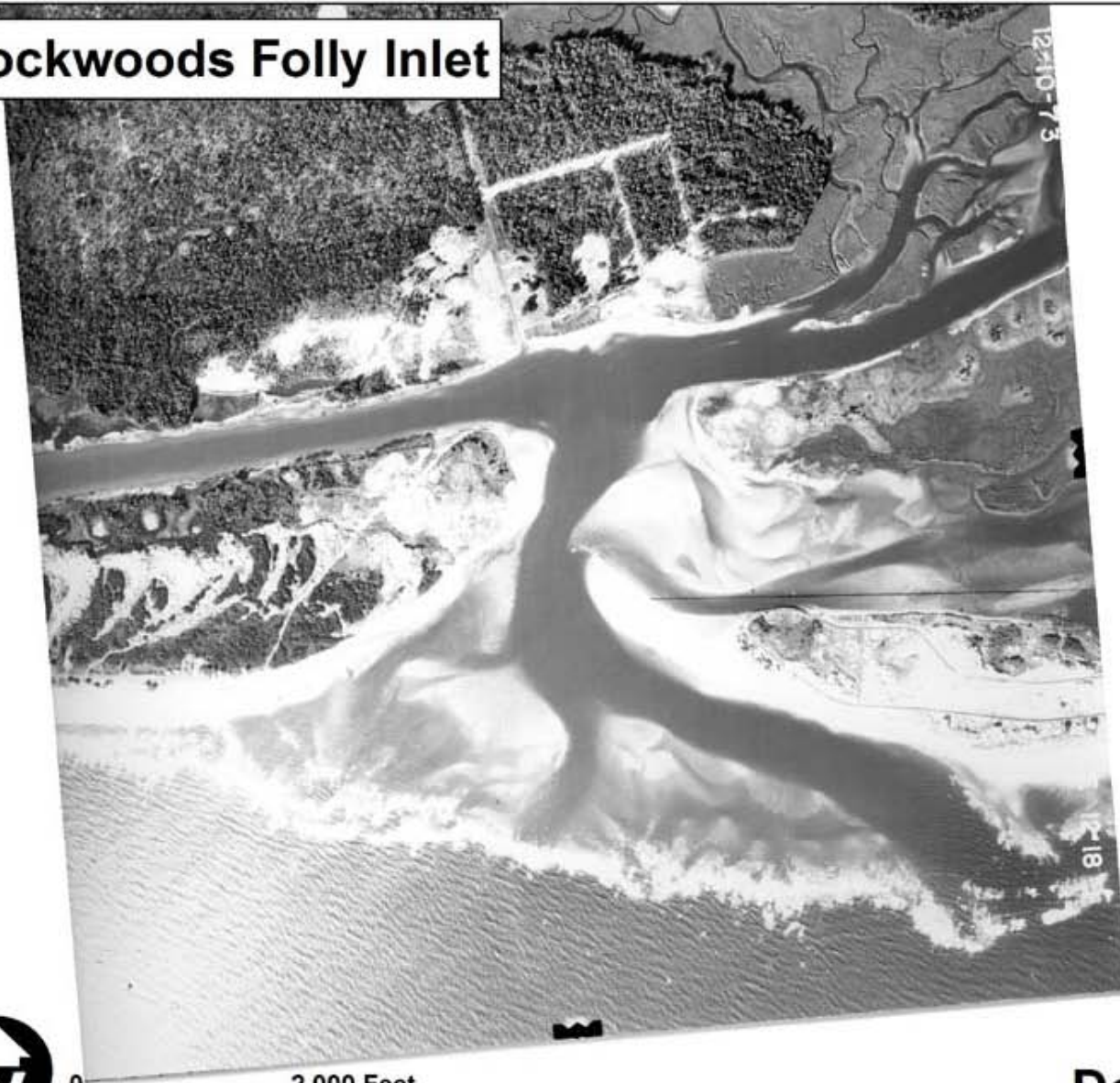


0

2,000 Feet

October 23, 1973

Lockwoods Folly Inlet



0 2,000 Feet

December 10, 1973

Lockwoods Folly Inlet

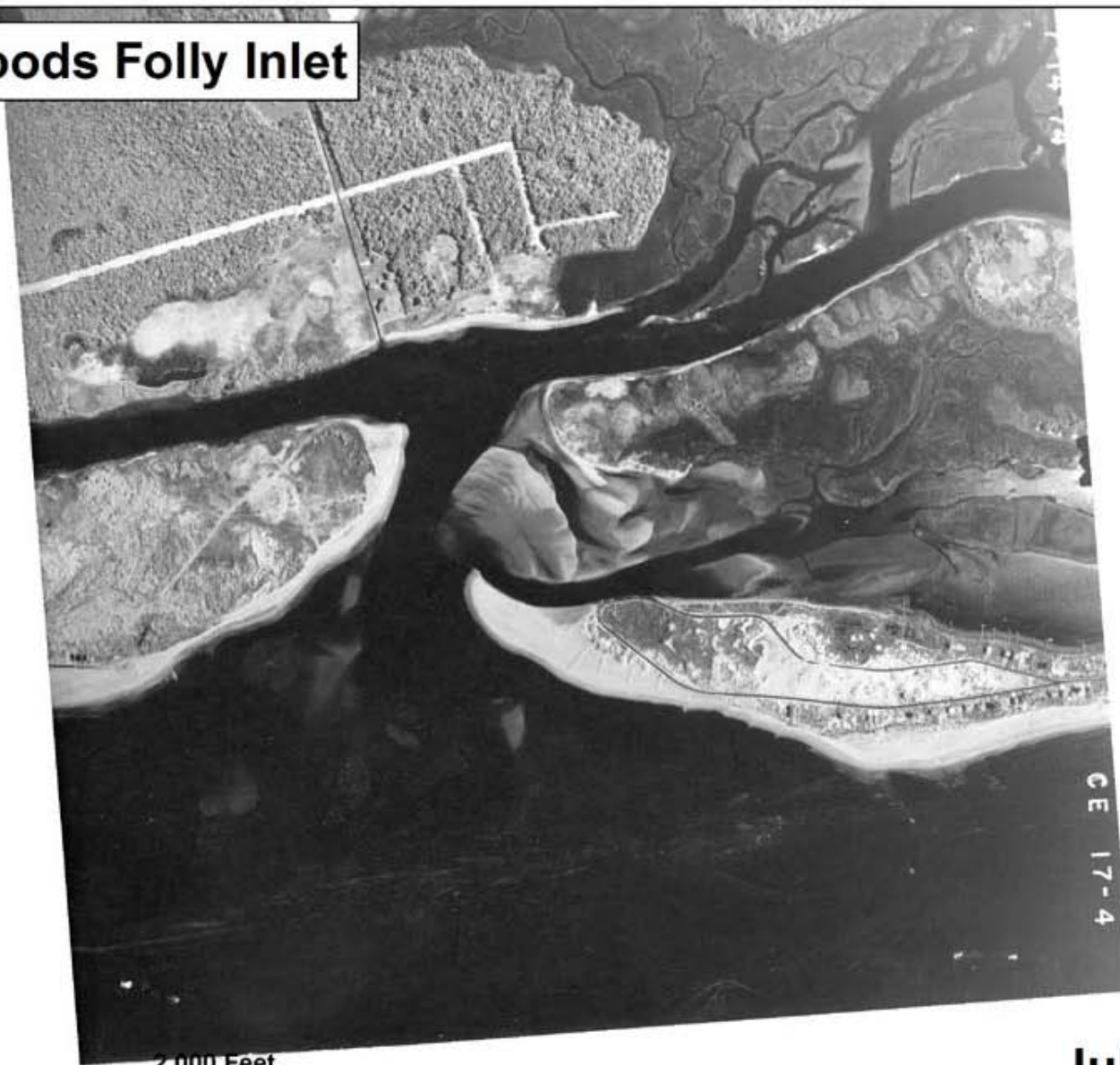


0

2,000 Feet

February 5, 1974

Lockwoods Folly Inlet



CE 17-4



0

2,000 Feet

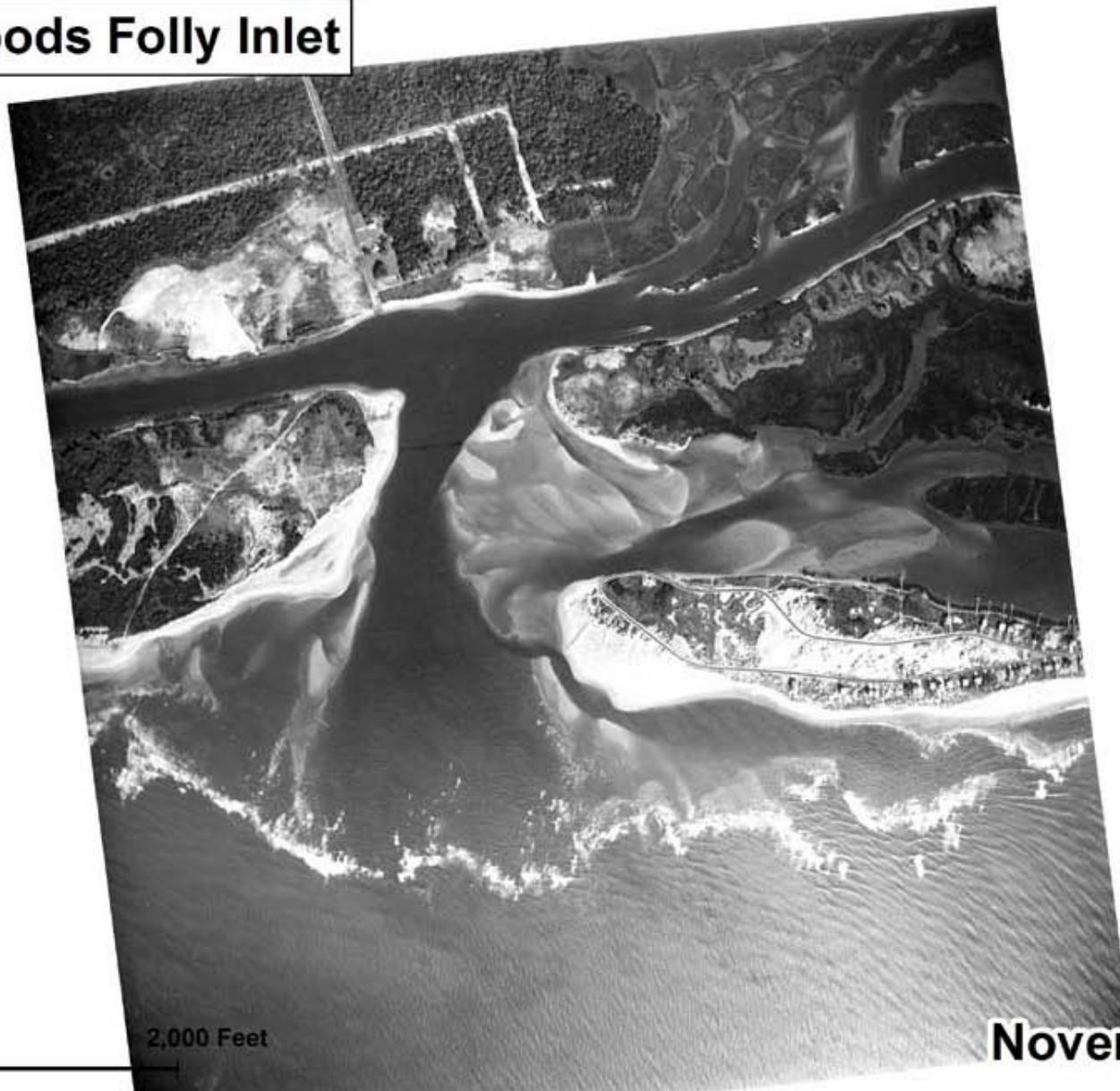
July 14, 1974

Lockwoods Folly Inlet



September 19, 1974

Lockwoods Folly Inlet



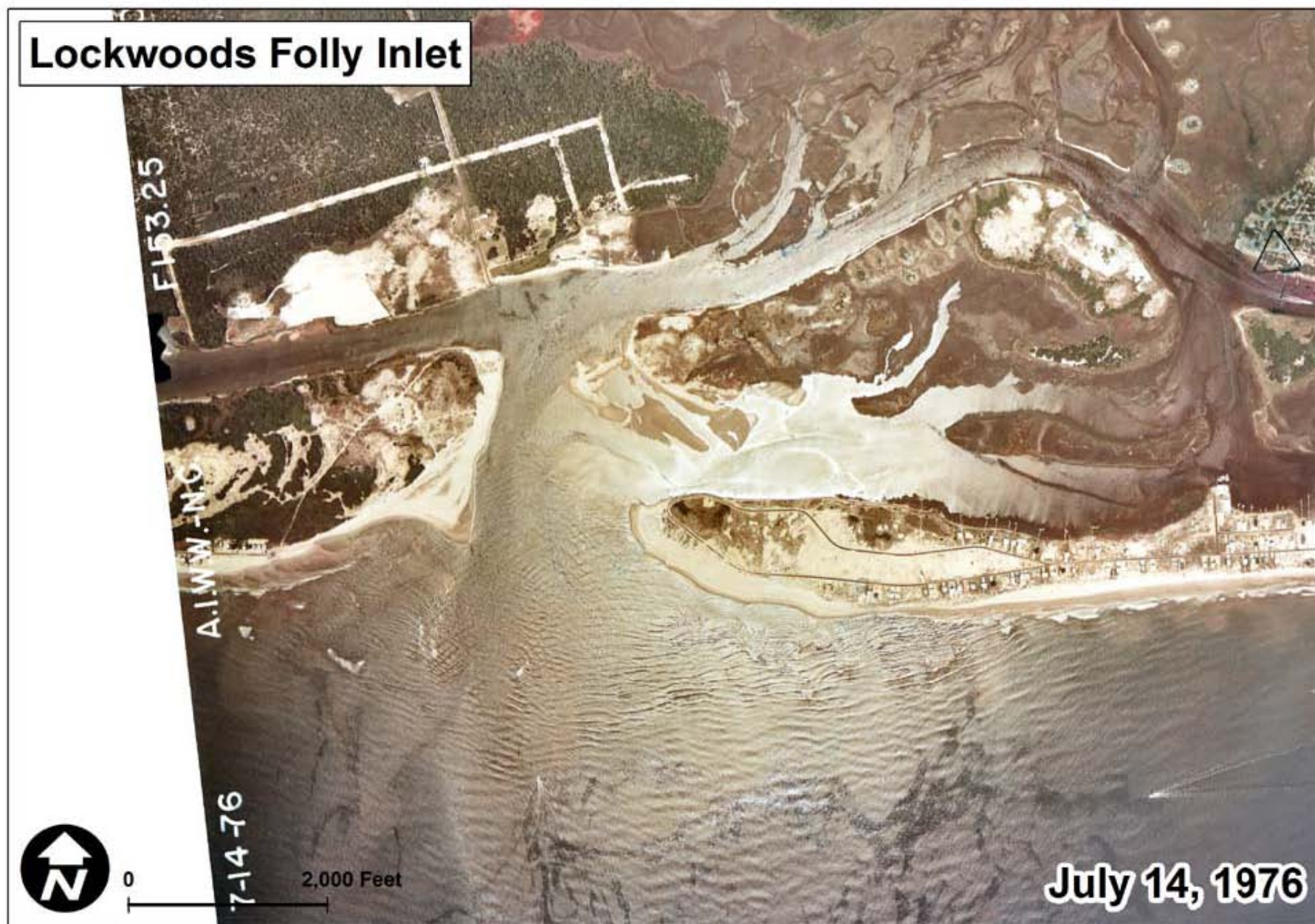
November 1975

Lockwoods Folly Inlet



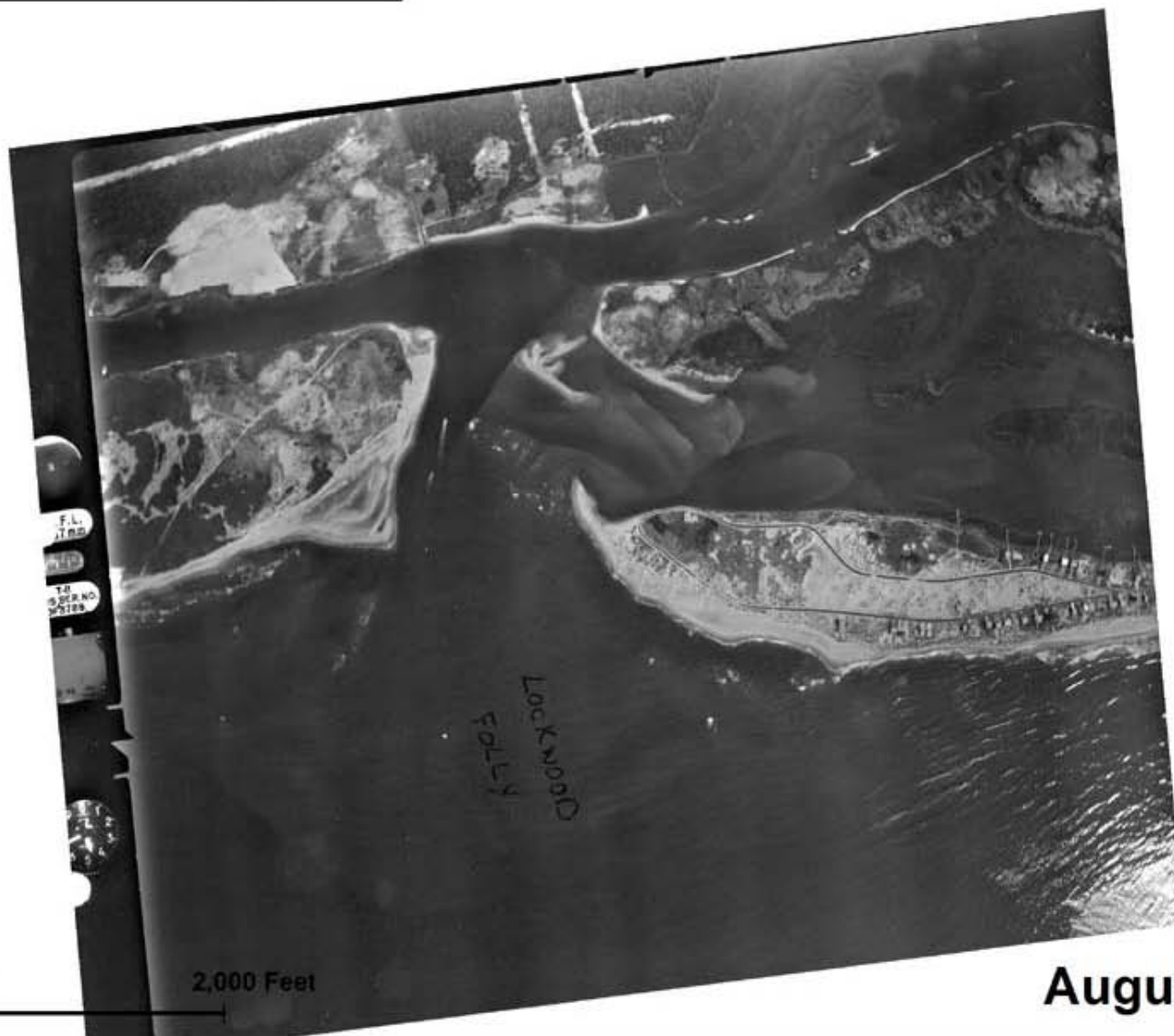
February 5, 1976

Lockwoods Folly Inlet



July 14, 1976

Lockwoods Folly Inlet



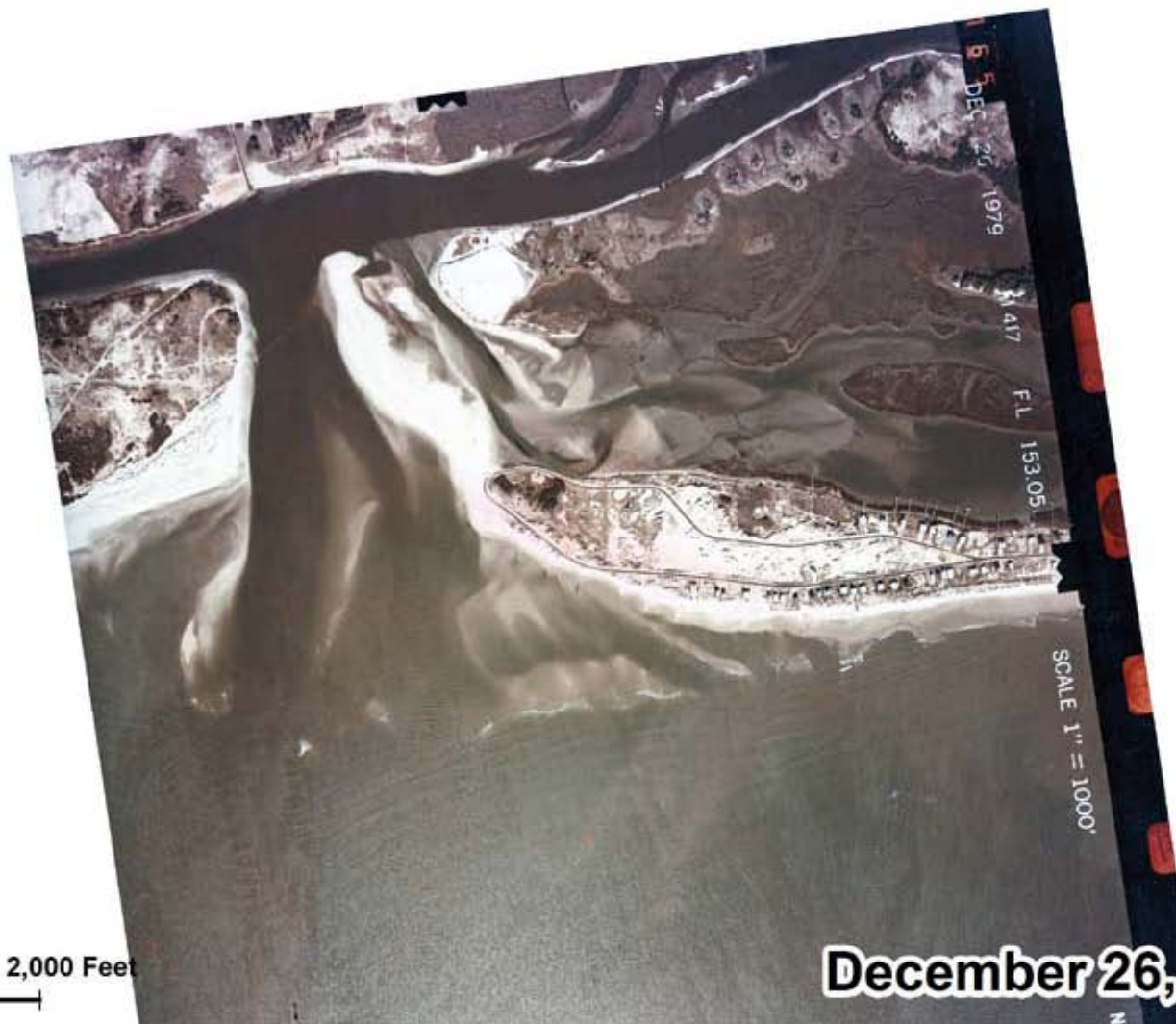
August 11, 1976

Lockwoods Folly Inlet



November 1, 1978

Lockwoods Folly Inlet



December 26, 1979

Lockwoods Folly Inlet



0

2,000 Feet

January 25, 1980

Lockwoods Folly Inlet



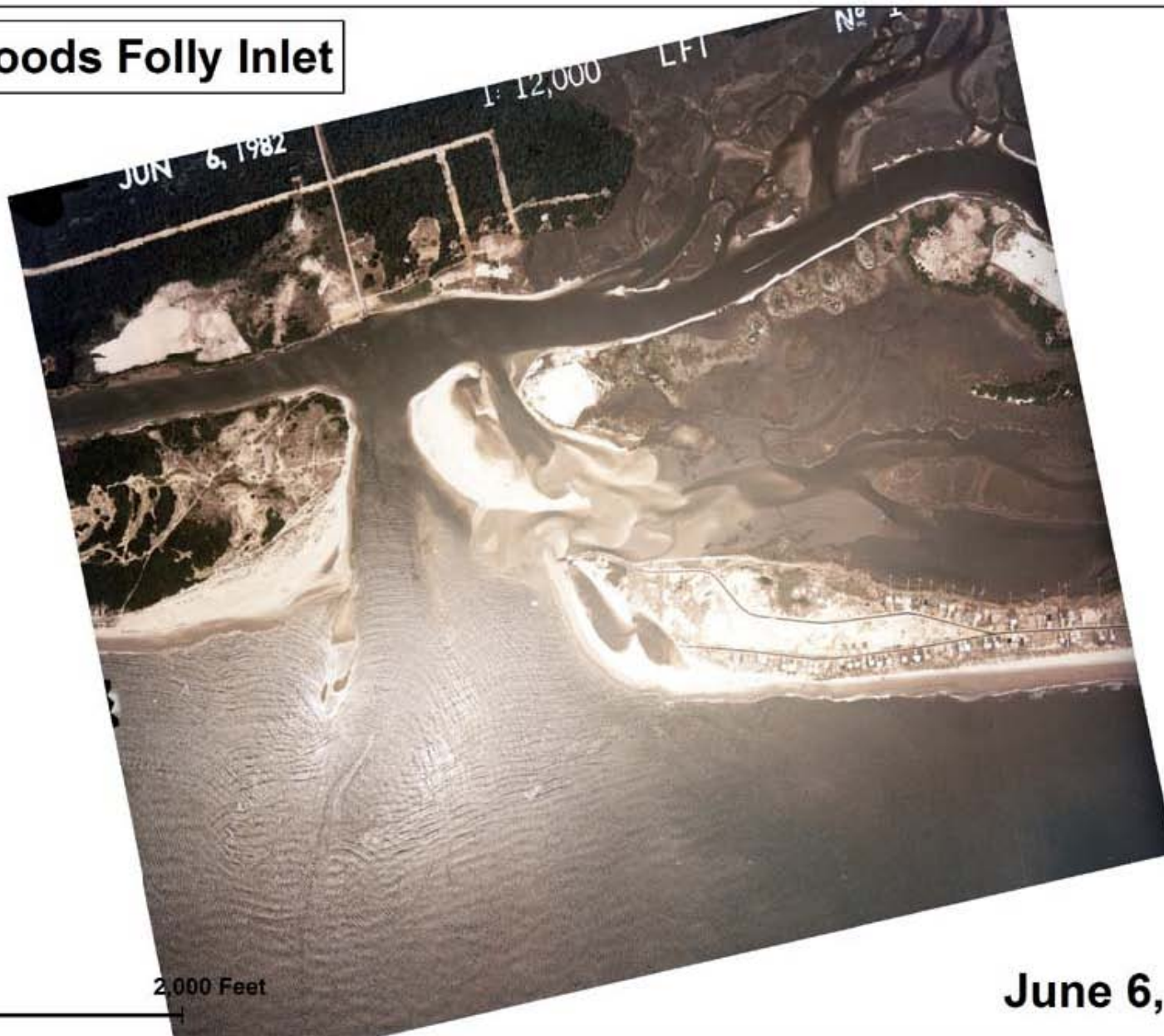
April 7, 1982

Lockwoods Folly Inlet



May 5, 1982

Lockwoods Folly Inlet



June 6, 1982

Lockwoods Folly Inlet



August 20, 1982

Lockwoods Folly Inlet



October 18, 1982

Lockwoods Folly Inlet

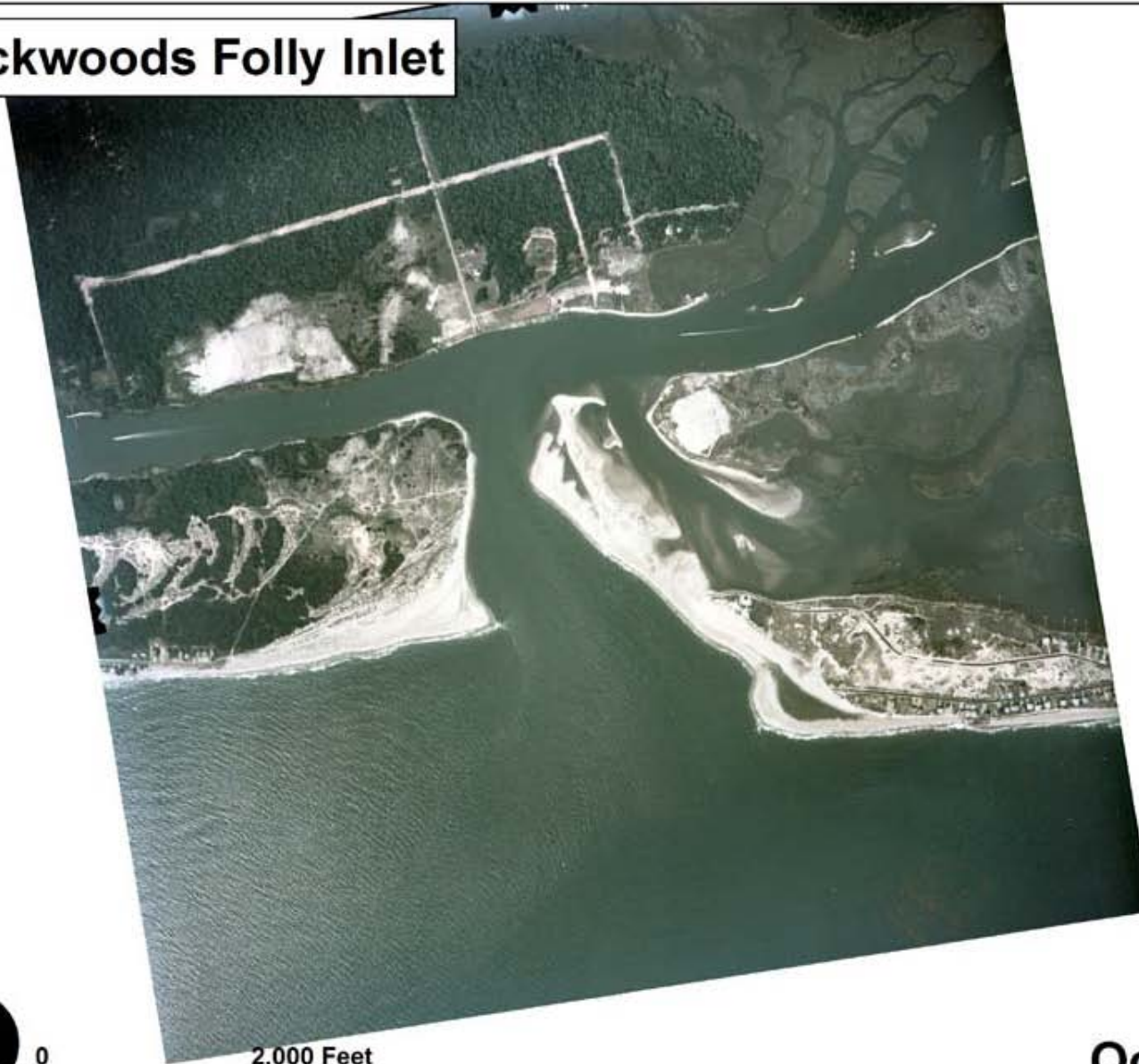


0

2,000 Feet

September 1983

Lockwoods Folly Inlet

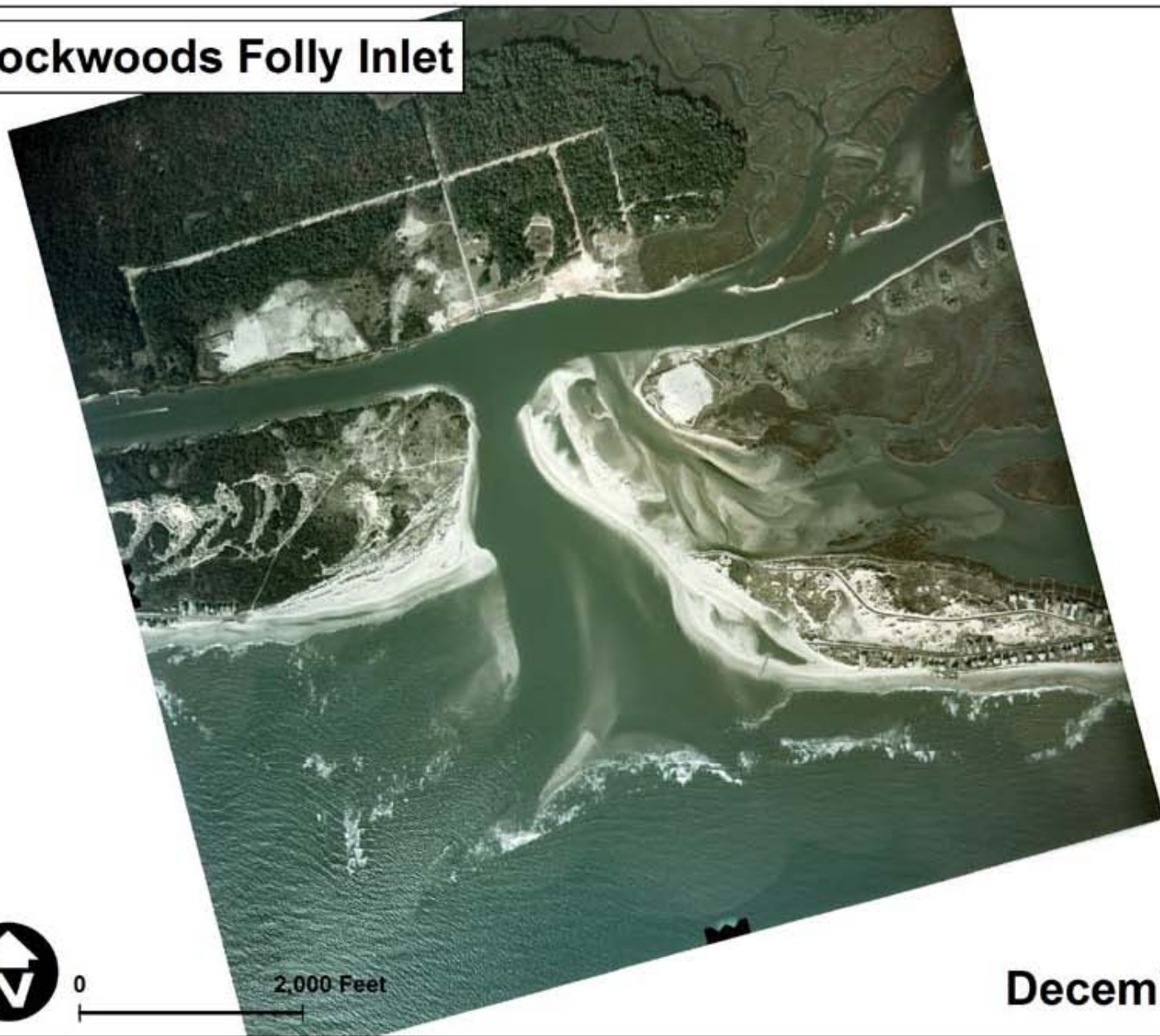


0

2,000 Feet

October 3, 1983

Lockwoods Folly Inlet



0

2,000 Feet

December 5, 1983

Lockwoods Folly Inlet



4 8 0 12 FEB 84 LOCKWOODS FOLLY LEC
M 1080 1" = 1200' ROLL 3

February 12, 1984



0 2,000 Feet

Lockwoods Folly Inlet



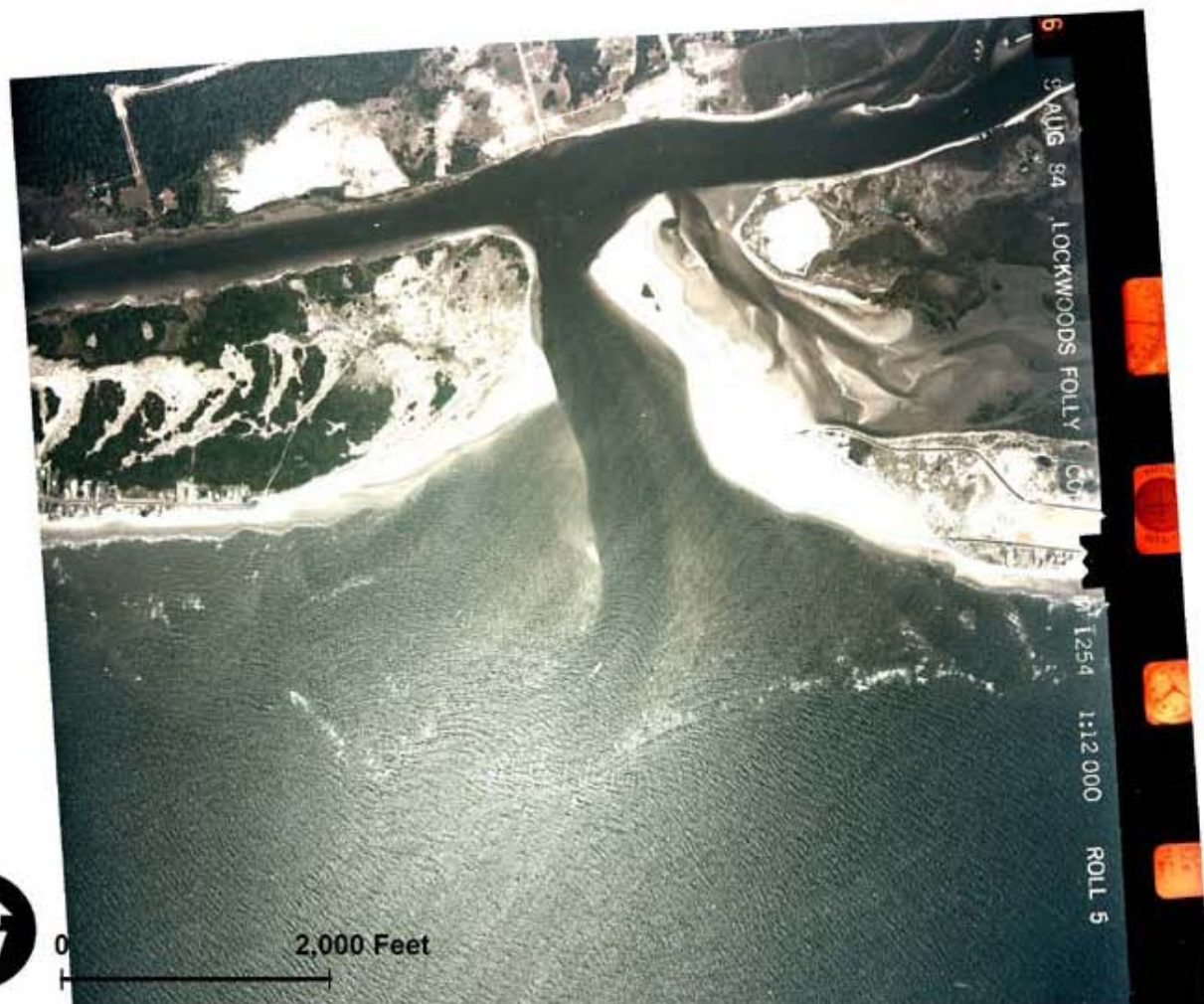
April 11, 1984

Lockwoods Folly Inlet



June 11, 1984

Lockwoods Folly Inlet



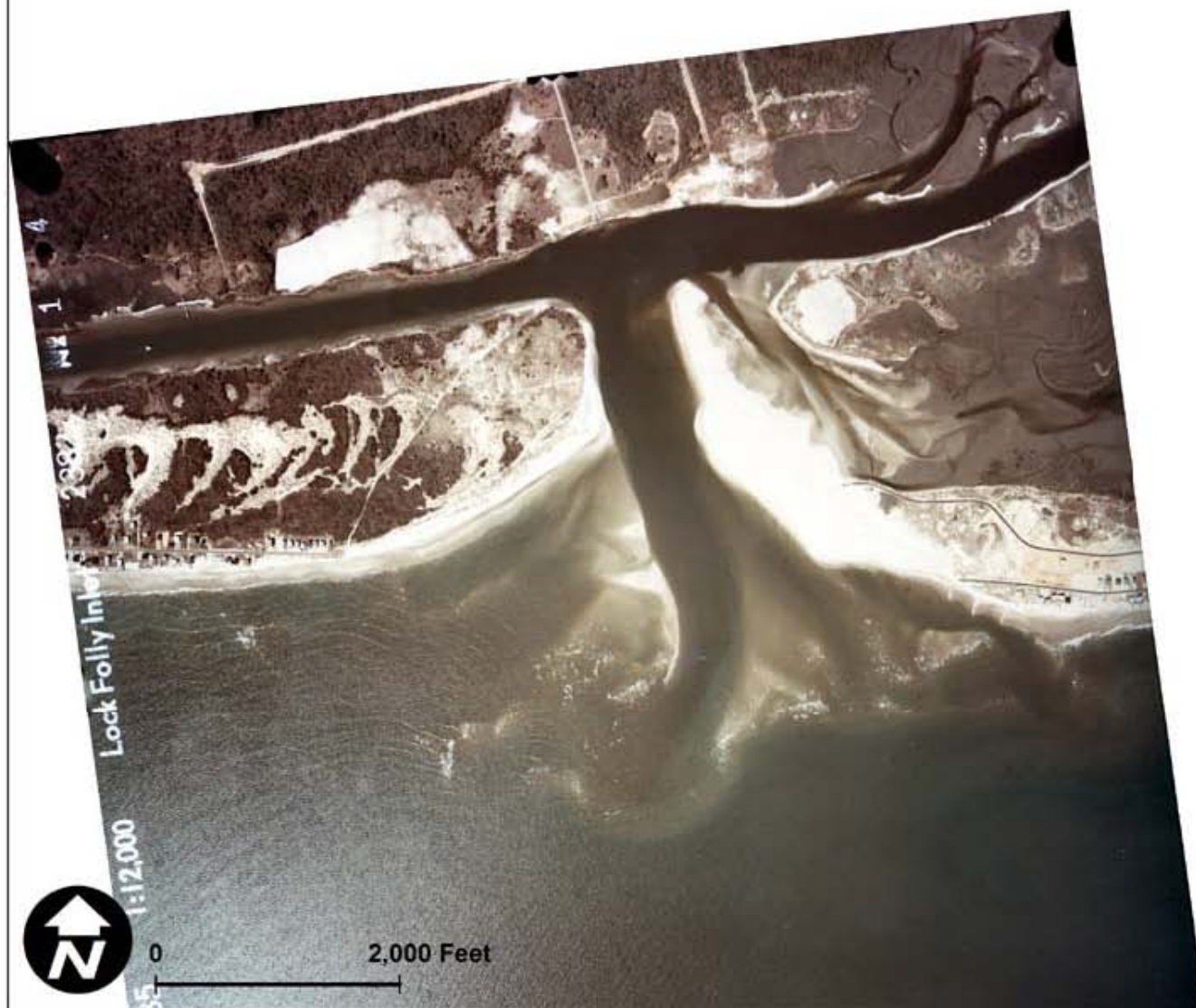
August 9, 1984

Lockwoods Folly Inlet



October 3, 1984

Lockwoods Folly Inlet

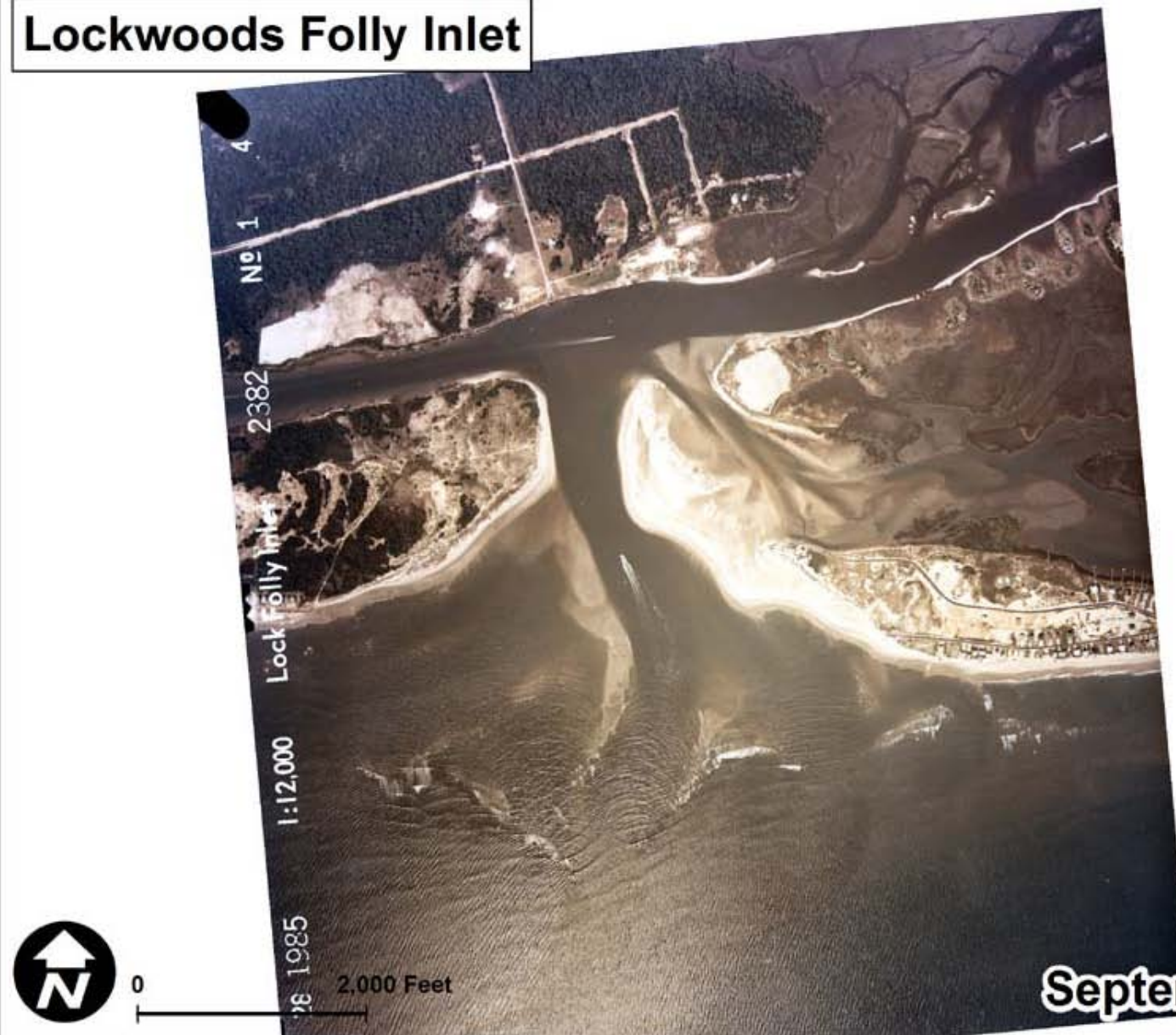


March 19, 1985

Lockwoods Folly Inlet



Lockwoods Folly Inlet



September 28, 1985

Lockwoods Folly Inlet



December 22, 1985

Lockwoods Folly Inlet



March 24, 1986

Lockwoods Folly Inlet



September 14, 1986

Lockwoods Folly Inlet



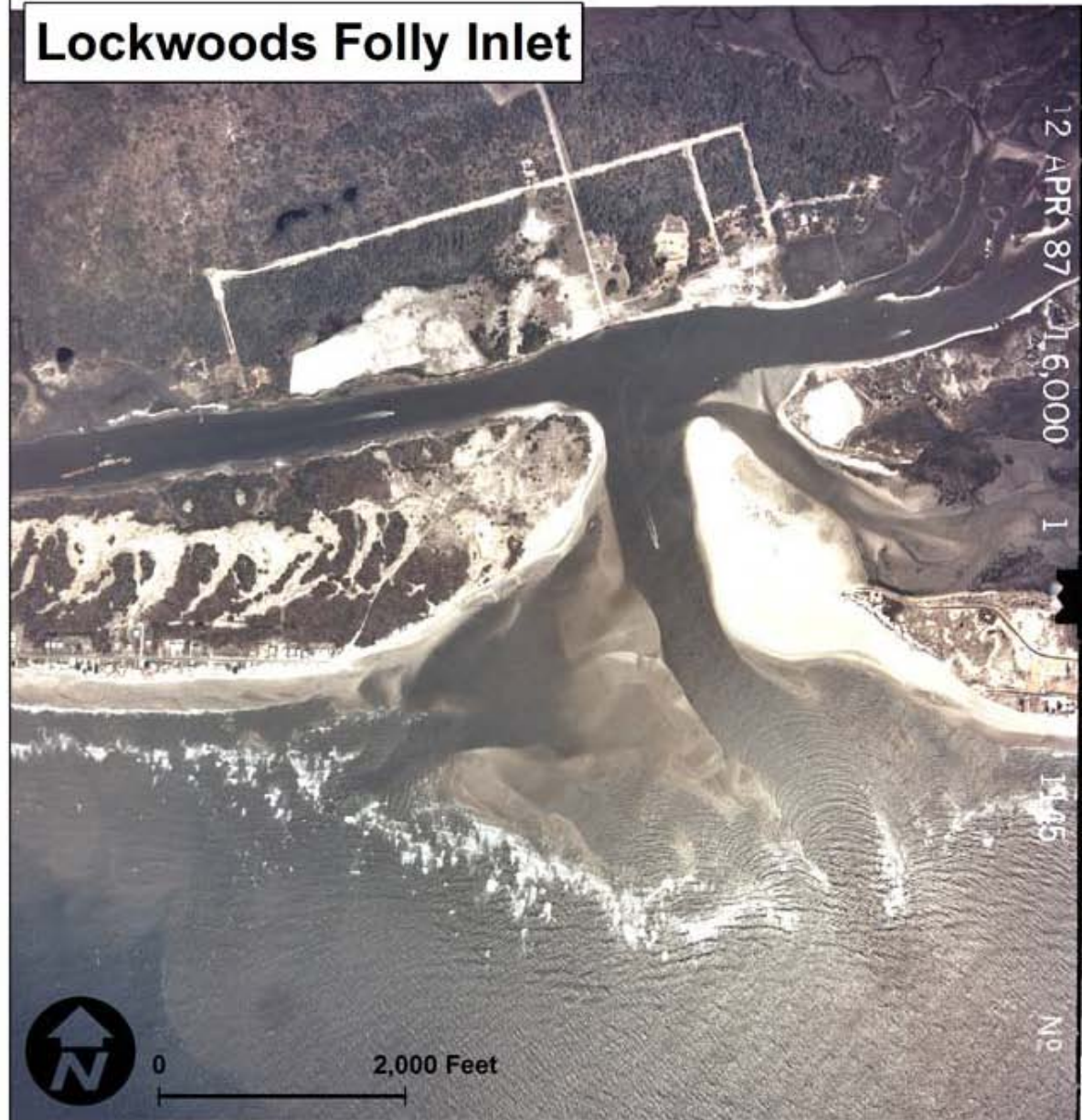
January 13, 1987

Lockwoods Folly Inlet



February 8, 1987

Lockwoods Folly Inlet



April 12, 1987

Lockwoods Folly Inlet

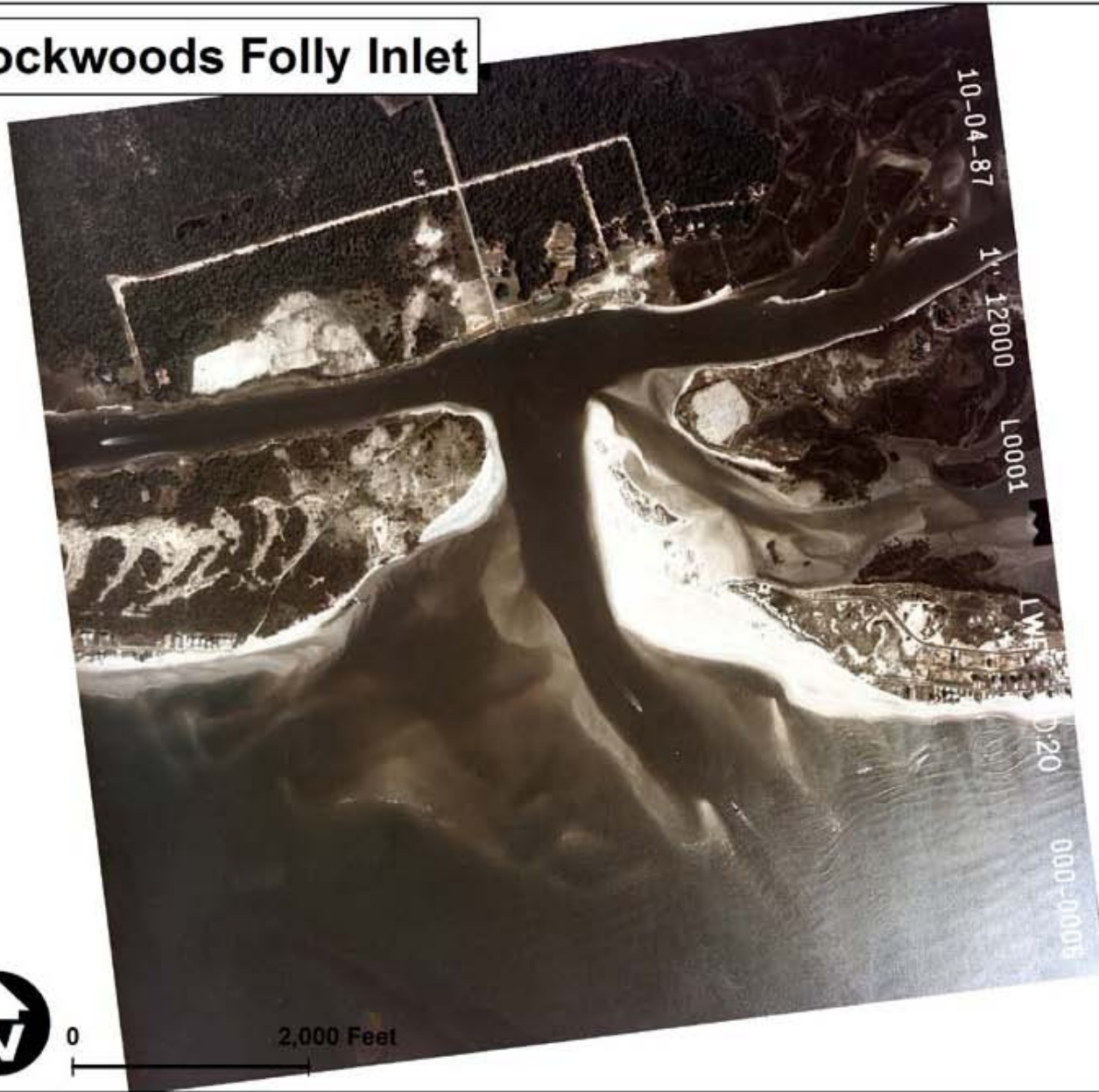


2,000 Feet

07-07-87
12000
L0002
LF
1920
00000005

July 7, 1987

Lockwoods Folly Inlet



October 4, 1987

Lockwoods Folly Inlet



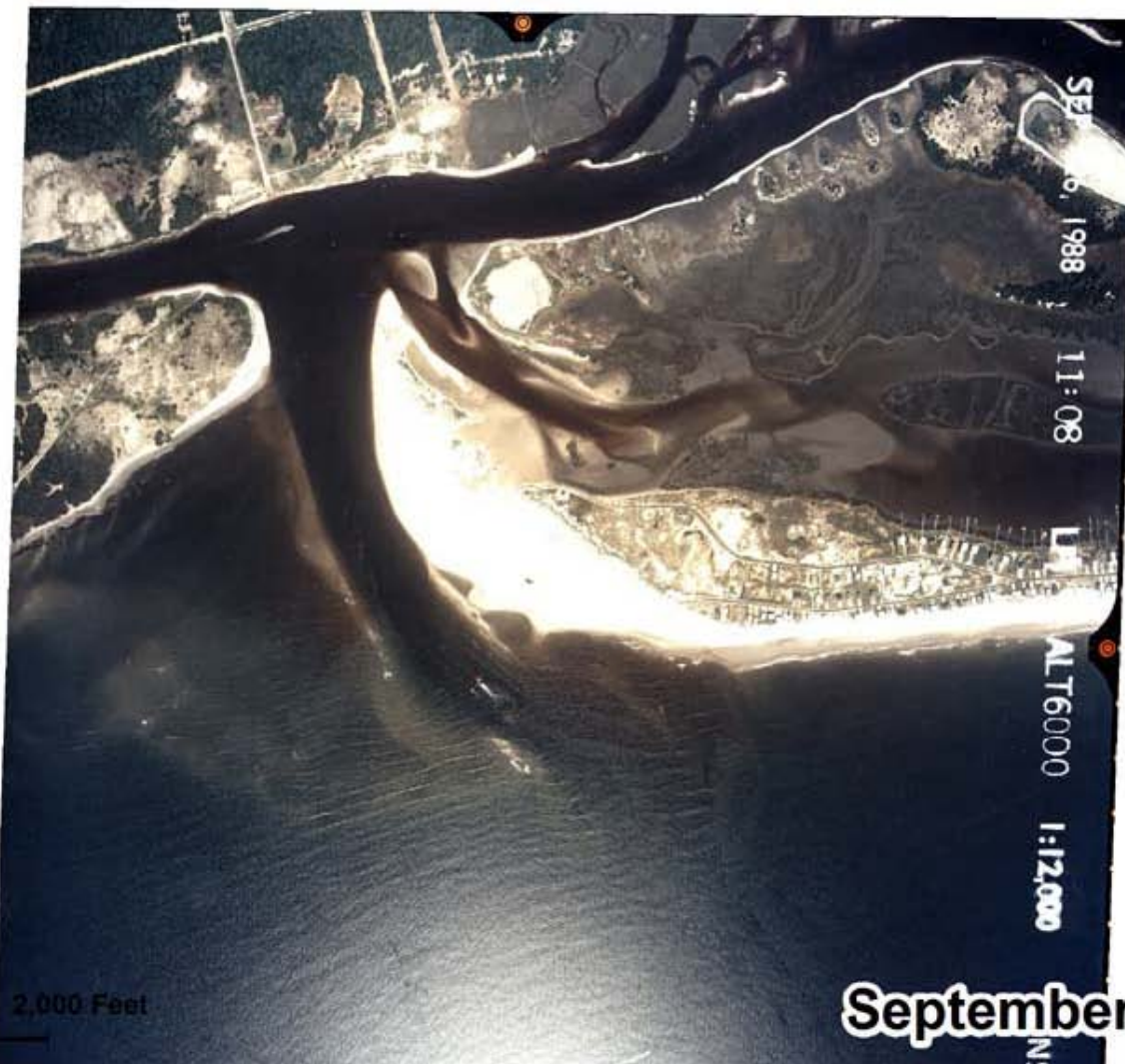
January 29, 1988

Lockwoods Folly Inlet



April 30, 1988

Lockwoods Folly Inlet



0

2,000 Feet

September 26, 1988

Lockwoods Folly Inlet



March 25, 1989

Lockwoods Folly Inlet



October 9, 1989

Lockwoods Folly Inlet



January 11, 1990

Lockwoods Folly Inlet



April 8, 1990

Lockwoods Folly Inlet



0

2,000 Feet

May 8, 1990

Lockwoods Folly Inlet



October 16, 1990

Lockwoods Folly Inlet



January 14, 1991

Lockwoods Folly Inlet



May 30, 1991

Lockwoods Folly Inlet



October 19, 1991

Lockwoods Folly Inlet



January 15, 1992

Lockwoods Folly Inlet



May 4, 1992

Lockwoods Folly Inlet



November 8, 1992

Lockwoods Folly Inlet



January 20, 1993

Lockwoods Folly Inlet



0 2,000 Feet

July 6, 1993

Lockwoods Folly Inlet



2,000 Feet

October 29, 1993

Lockwoods Folly Inlet



0

2,000 Feet

November 29, 1993

Lockwoods Folly Inlet



January 9, 1994

Lockwoods Folly Inlet



April 7, 1994

Lockwoods Folly Inlet



0

2,000 Feet

November 13, 1994

Lockwoods Folly Inlet



0

2,000 Feet

January 27, 1995

Lockwoods Folly Inlet



15-APR-95 12:00 LT 14.1



0

2,000 Feet

April 15, 1995

Lockwoods Folly Inlet



11 9 95 1:12000

LEI

03

November 9, 1995



0

2,000 Feet

Lockwoods Folly Inlet



January 22, 1996

Lockwoods Folly Inlet



0

2,000 Feet

June 27, 1996

Lockwoods Folly Inlet



15 SEP 96

1:12,000

H. FRAN

143

September 15, 1996



0

2,000 Feet

Lockwoods Folly Inlet



Lockwoods Folly Inlet



Lockwoods Folly Inlet



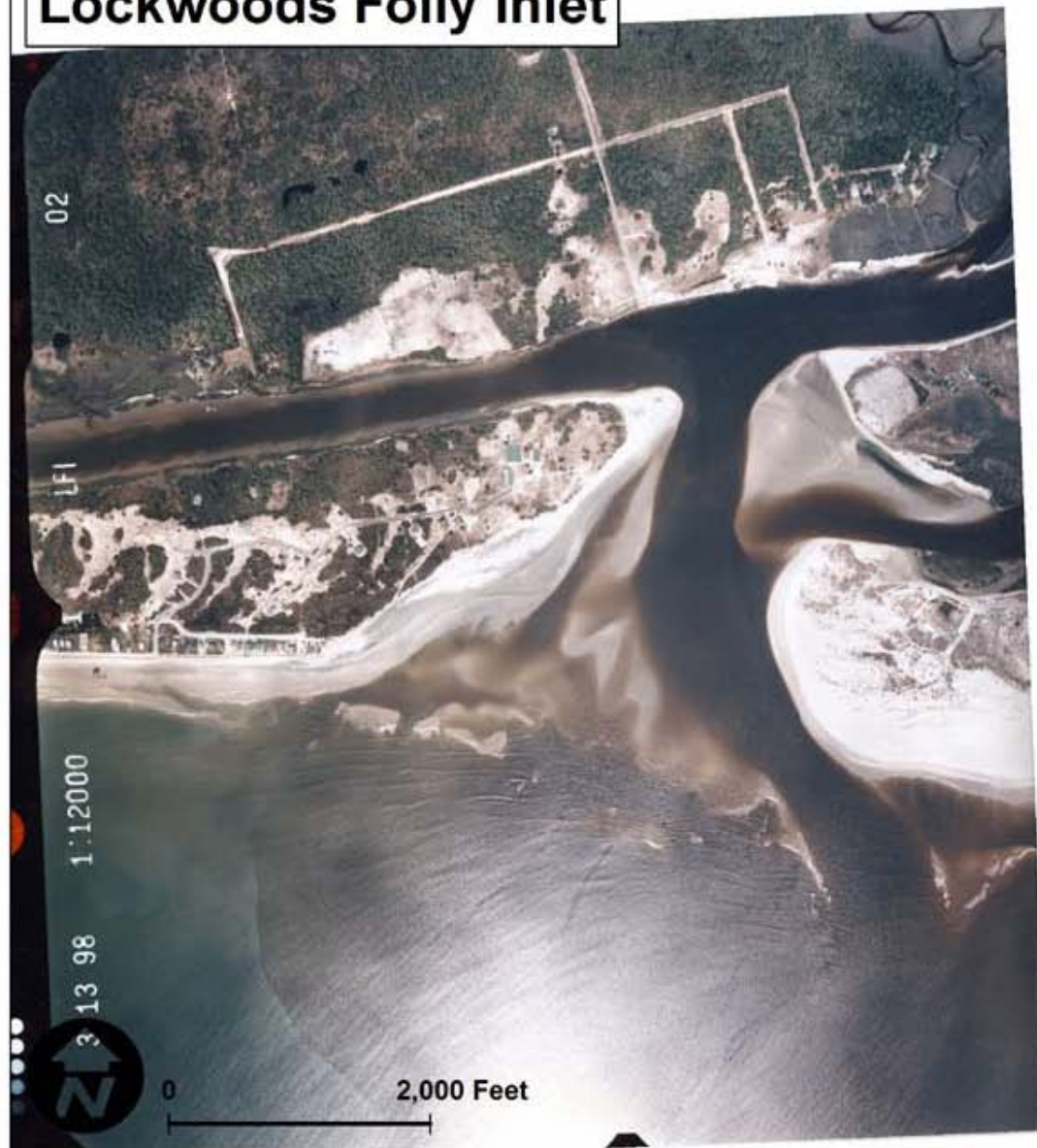
May 18, 1997

Lockwoods Folly Inlet



November 25, 1997

Lockwoods Folly Inlet



March 13, 1998

Lockwoods Folly Inlet



August 21, 1998

Lockwoods Folly Inlet



0

2,000 Feet

March 2, 1999

Lockwoods Folly Inlet



0

2,000 Feet

11 6 99 1 12000

04

November 6, 1999



Lockwoods Folly Inlet



0

2,000 Feet

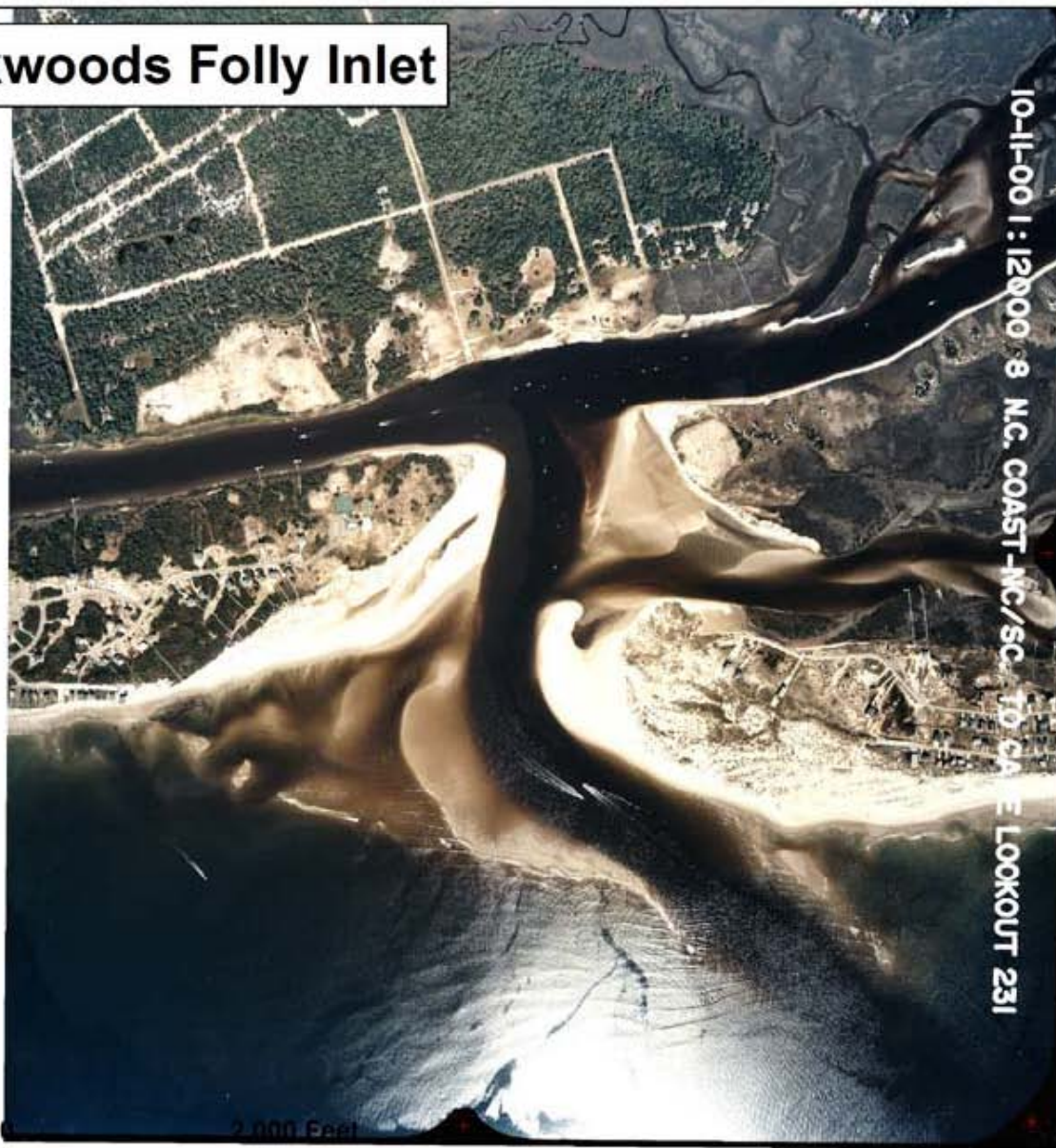
April 5, 2000

Lockwoods Folly Inlet



June 10, 2000

Lockwoods Folly Inlet



October 11, 2000

Lockwoods Folly Inlet



February 7, 2001

Lockwoods Folly Inlet



March 10, 2001

Lockwoods Folly Inlet



0

2,000 Feet

June 30, 2001

Lockwoods Folly Inlet



September 28, 2001

Lockwoods Folly Inlet



0

2,000 Feet

May 16, 2002

Lockwoods Folly Inlet



September 6, 2002

Lockwoods Folly Inlet



February 11, 2003

Lockwoods Folly Inlet



0

2,000 Feet

March 10, 2003

Lockwoods Folly Inlet



August 15, 2003



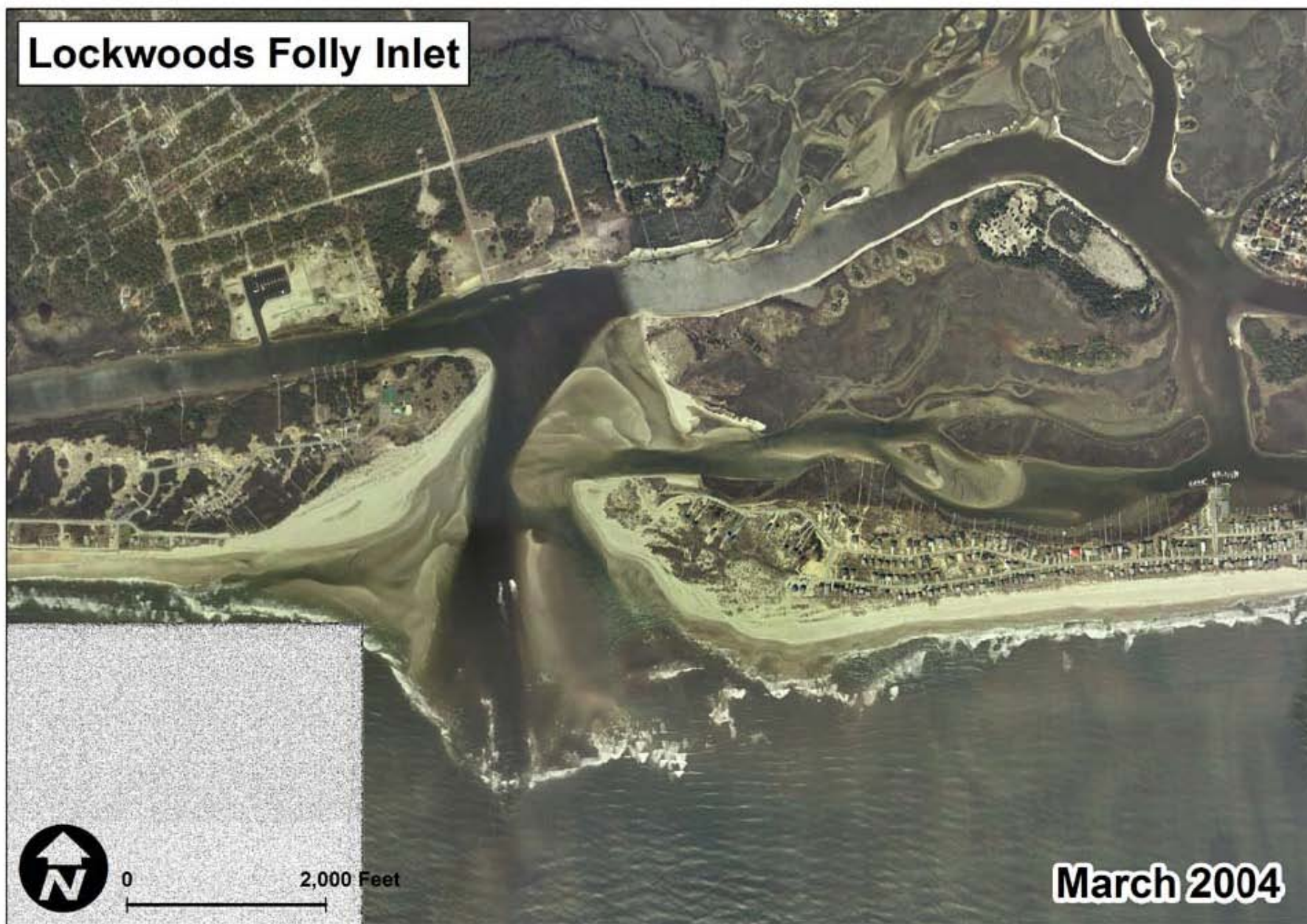
0
1

Lockwoods Folly Inlet



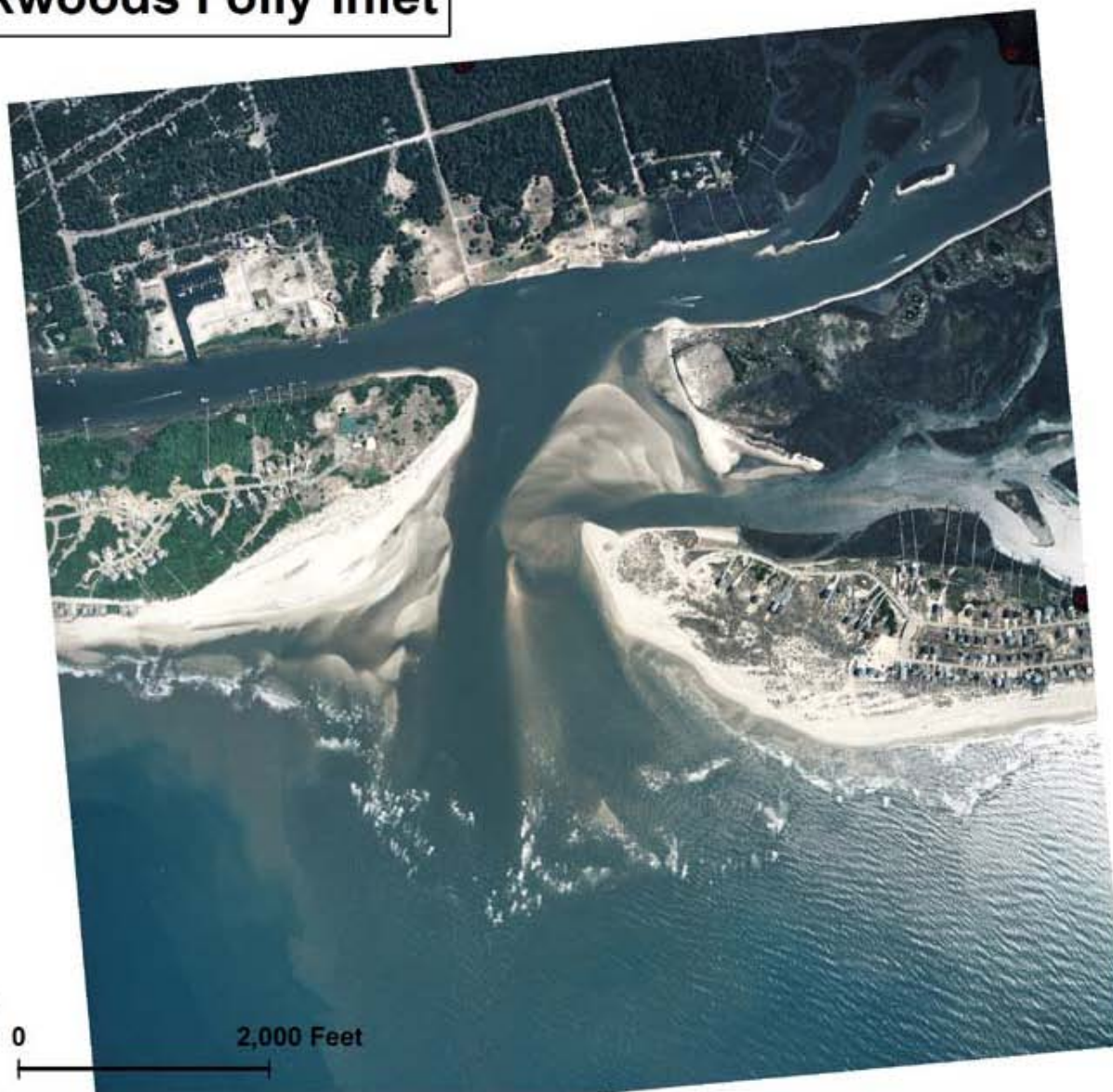
October 13, 2003

Lockwoods Folly Inlet



March 2004

Lockwoods Folly Inlet



0

2,000 Feet

June 1, 2004

Lockwoods Folly Inlet



0

2,000 Feet

2005

Lockwoods Folly Inlet

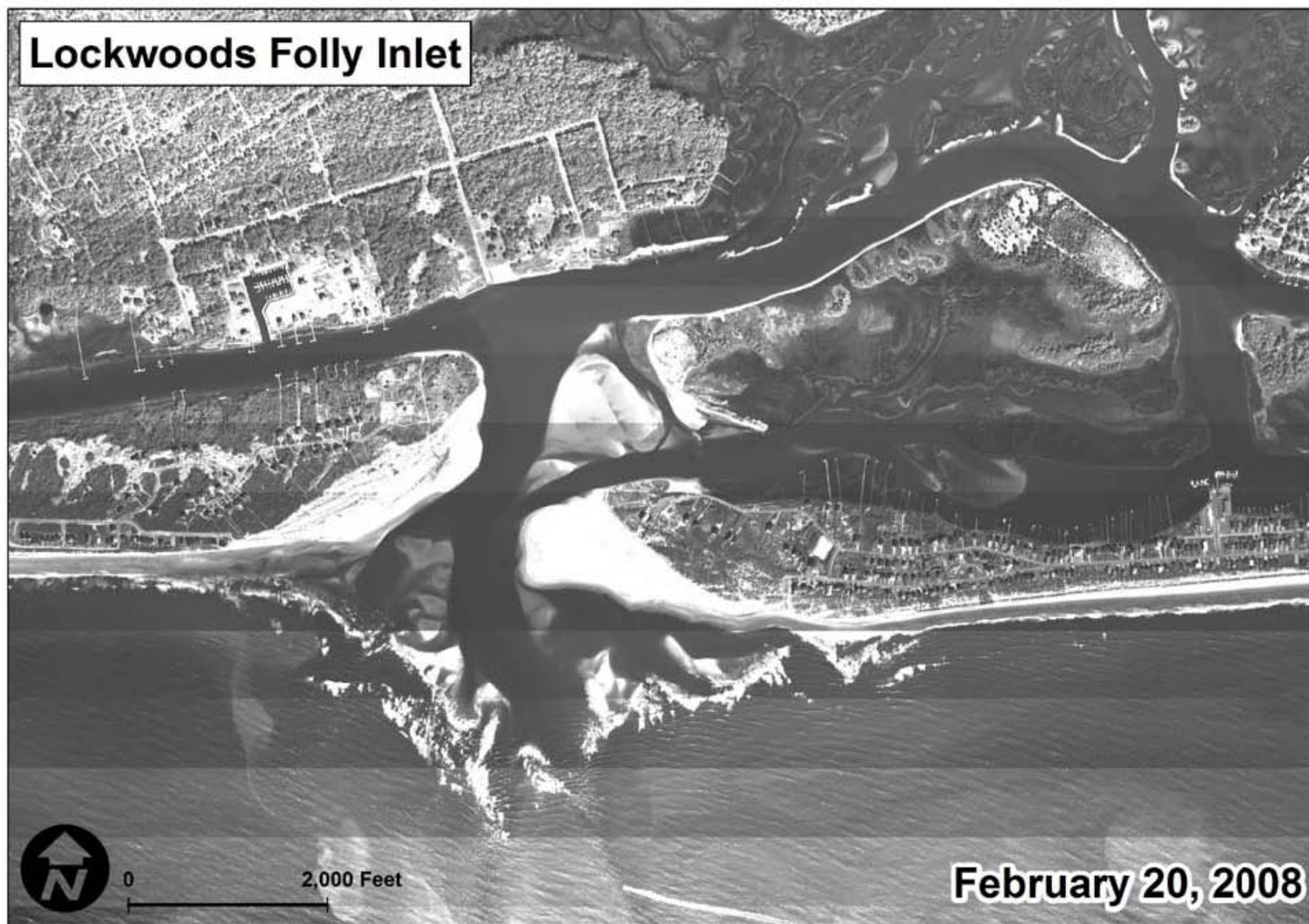


0

2,000 Feet

2006

Lockwoods Folly Inlet



February 20, 2008



0

2,000 Feet